



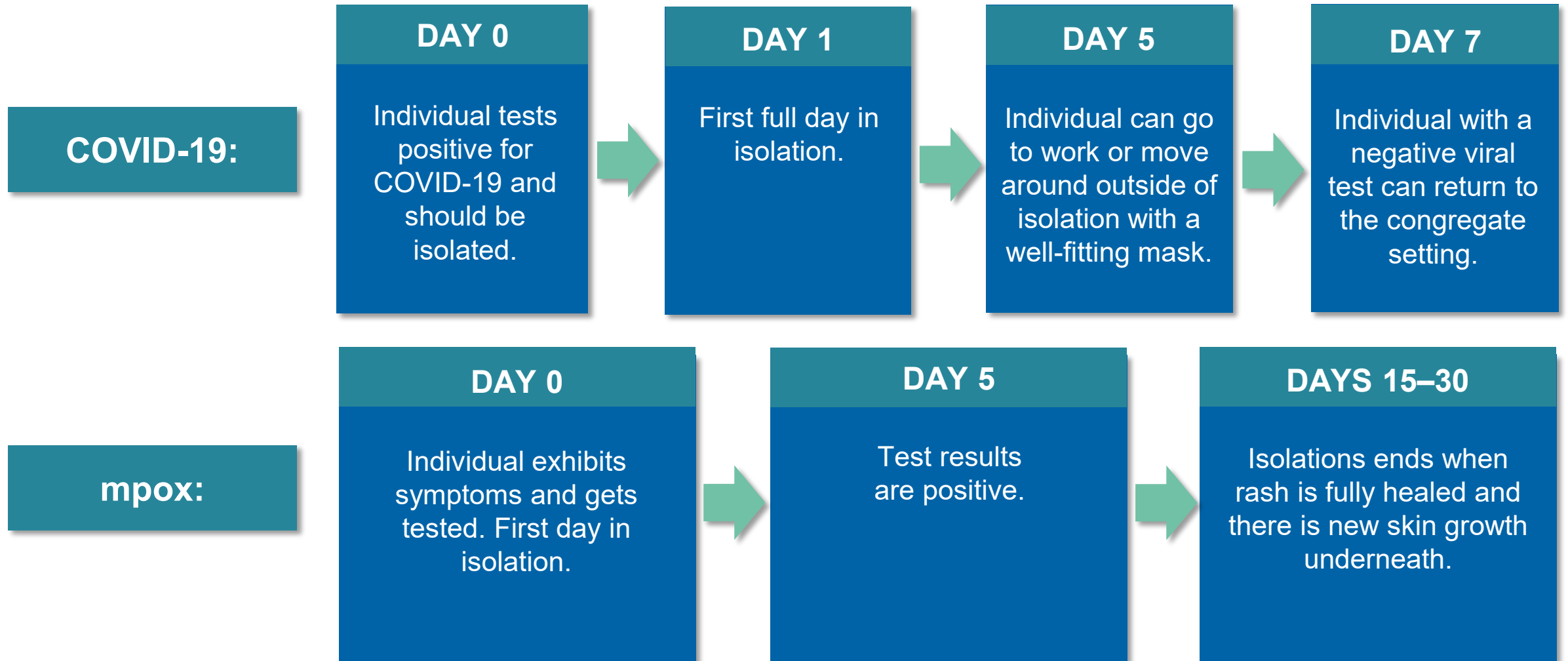
# Infection Control and Winter Planning

Infection Control Measures: Isolation and Operational Considerations for Non-Congregate Shelter





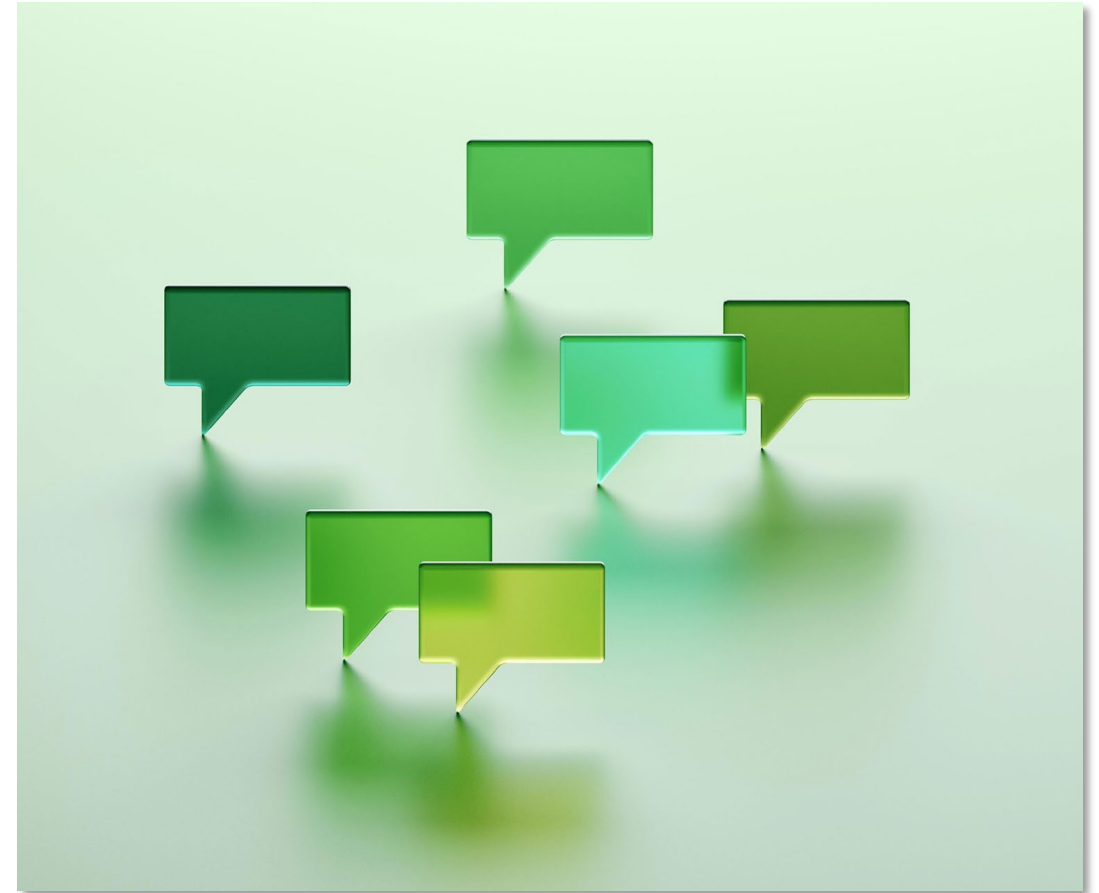
# Isolation Time Differences





# Partnership

- Contract or memorandum of understanding in place
- Utilize public health partner's expertise
- Outline roles and responsibilities
- Communication is key!





# Physical Space Attributes

- Individuals are housed in private rooms with bathrooms
- There is clear signage designating isolation areas and entrance/exit pathways
- Professional staff are retained for regular cleaning and disinfecting regimen
- HVAC is controlled in each individual unit





# Staffing Considerations

- Co-locate healthcare partners and shelter staff to deliver care
- Limit access to the isolation area to assigned staff only
- Ensure staff working with COVID-19+ or mpox+ residents have personal protective equipment (PPE) and are up to date on vaccinations
- Use the isolation time to focus on permanent housing solutions for residents once they can leave isolation







# Attending to Resident Needs

- Toiletries and other supplies are readily available
- Meals are provided
- Availability to leave room
- Technology
- Watch for distress signals





# Winter Planning Resources

To learn more about shelter-based isolation, please review the following guidance:

- [Shelter-Based Isolation in Place](#)
- [Alternative Approaches to Isolation and Quarantine Spaces](#)

If you are concerned about staffing shortages, view:

- [Strategies to Address Staffing and Service Shortages](#)

The Centers for Disease Control and Prevention (CDC) continues to update its guidance, including [isolation considerations](#). Visit their website for more information.