

# COVID-19

## Homeless System Response: When to Use Personal Protective Equipment

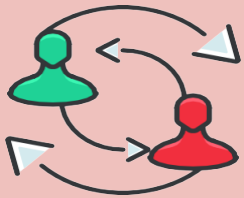
Based on your exposure risk level, follow the appropriate guidance in using Personal Protective Equipment (PPE)

### Medium to Very High Risk Use PPE

Frequent handwashing, using face mask or covering, maintaining physical distance of 6 ft. or more when possible, and other PPE when appropriate (e.g. gloves, isolation gown).



High population density environments including congregate shelters and encampments



Face-to-face, in-person meetings to provide housing navigation, case management, and street outreach



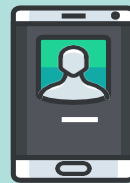
Workers exposed to, or providing care for, known or suspected COVID-19 patients.

### Lower Risk Use Fabric Covers

Frequent hand washing, using cloth covering, and maintaining physical distance of 6 ft. or more from others while in public spaces.



Remote workers, those working from home during the pandemic.



Workers providing only telehealth or remote services.



Workers who **do not** have frequent close contact with others or work behind glass or protective barriers.

#### Additional Guidance Links

<https://www.osha.gov/SLTC/covid-19/hazardrecognition.html>  
<https://www.osha.gov/SLTC/covid-19/controlprevention.html>

If someone tests positive and/or is experiencing possible symptoms of COVID-19, follow local community health plans and CDC recommendations.

*This resource is prepared by technical assistance providers and intended only to provide guidance. The contents of this document, except when based on statutory or regulatory authority or law, do not have the force and effect of law and are not meant to bind the public in any way. This document is intended only to provide clarity to the public regarding existing requirements under the law or agency policies.*