



Annual Homeless Assessment Report (AHAR)

Part 1: An Introduction to the Data
Collection Process

October 9th, 2012



Partners

- **Presenter:** Louise Rothschild, Abt Associates
- **Resource Advisor:** Nichole Fiore, Abt Associates



Webinar Format

- Webinar will last approximately one hour
- Call will be recorded, so audience members are “muted” due to the high number of participants
- Recording of webinar will be posted to the HUD HRE, at www.HUDHRE.info



Submitting questions

- Audience members who would like to pose a question can do so through the “questions” function found in the “GoToWebinar” toolbar
- Questions will be responded to directly by AHAR resource advisors standing by
- We will only be able to answer some questions. If you have a question after the webinar, please submit it to HUD’s Virtual Help Desk at <http://hudhre.info/helpdesk>. **Select “HDX”** as your Program/System when asking the question



Webinar Materials & Evaluation

- Materials referenced during this webinar can be found on HUD's Homelessness Resource Exchange at <http://hudhre.info> or the Homelessness Data Exchange (HDX) at www.hudhdx.info
- Feedback survey will be emailed following this webinar; please complete it and help us improve our approach to providing AHAR technical assistance



Learning Objectives

- Understand the importance and usefulness of AHAR data
- Understand the data quality thresholds for inclusion in the AHAR
- Understand how to navigate the Homelessness Data Exchange (HDX) and submit data for the AHAR



Agenda

- AHAR Overview: Key Terms and Dates
- The AHAR Process: Overview of Data Collection
- Homelessness Data Exchange (HDX) Overview: How to Submit Data in the HDX



AHAR Overview



What is the AHAR?

- Annual report to Congress that provides:
 - The number of sheltered and unsheltered homeless individuals and families on a single night (Point-in-Time count)
 - A 12-month count of sheltered homelessness
 - A descriptive analysis of characteristics and service use patterns of sheltered persons, and those residing in PSH programs over the course of the year (HMIS data)
 - Nationwide trends in homelessness
 - The size and use of the U.S. inventory of residential programs for homeless persons (HIC)
- Data provided for several subpopulations: all persons, individuals, persons in families, and veterans
- Released annually
- Past reports available for download at www.hudhre.info



AHAR Data Sources

- **HMIS Data**
 - Clients served between October 1 and September 30 of the following year
 - Based on the universal data elements (some program specific—PSH only)
 - Examples: Age, Race, Veteran Status, etc.
 - Data from emergency shelters, transitional housing, and permanent supportive housing programs
- **CoC Exhibit 1 Data**
 - Housing Inventory data
 - Sheltered and Unsheltered Populations data
 - Sheltered and Unsheltered Subpopulations data
- All AHAR data is submitted and stored in the Homelessness Data Exchange (HDX)



Who reports to the AHAR?

- All CoCs nationwide provide Housing Inventory and Point-in-Time (PIT) Count data
- For HMIS data there are two types of communities reporting to the AHAR:
 - Sample Communities: 102
 - Sample communities are Community Development Block Grant (CDBG) jurisdictions that were randomly selected to be representative of the nation (CDBG jurisdictions can be part or all of a CoC).
 - Contributing Communities: 349 in 2011 AHAR
 - Contributing communities are CoCs that volunteer to provide CoC-wide data
- All CoCs with adequate data quality can participate



Why is the AHAR important?

- Primary source of data on the extent and nature of homelessness nationwide
 - AHAR data are being used to measure progress against the nation's plan to end homelessness
- Communities learn about their homeless population, and take greater stake in the quality of their HMIS data
- HUD considers AHAR participation a benchmark of a high-quality HMIS implementation
- HUD asks questions about AHAR participation in HUD's CoC funding application



AHAR Reporting Categories

- ES-FAM: all persons in families served in emergency shelters
- ES-IND: all persons served in emergency shelters for individuals
- TH-FAM: all persons in families served in transitional housing
- TH-IND: all persons served in transitional housing for individuals
- PSH-FAM: all persons in families served in permanent supportive housing
- PSH-IND: all persons served in permanent supportive housing for individuals



AHAR Reporting Deadlines

- October 1, 2012:
 - AHAR data collection begins in the HDX
- November 15, 2012:
 - First draft of data on All Persons
- December 14, 2012:
 - First draft of data on Veterans
- January 15, 2013:
 - Final draft of data on All Persons completed and confirmed by communities
- January 22, 2013:
 - Final draft of data on Veterans completed and confirmed by communities



Reporting Veterans in the AHAR

- In 2012, communities will continue to contribute data separately on homeless veterans in addition to all homeless persons
- All questions in the Veterans questions are the same, just limited to homeless veterans



Data Quality Thresholds

- CoCs can participate in all or a few categories—it's not all or nothing!
- Each reporting category is assessed independently for data quality, using three thresholds:
 1. 50% HMIS bed coverage
 2. Reasonable bed utilization rates
 - Typically between 65—105%
 3. Reasonable missing data rates



The Sandbox Feature

- A special feature of the HDX is the HDX Sandbox.
- The Sandbox is a “dummy” HDX site which was designed for public viewing and testing the AHAR data collection screens and for generating and testing upload files
- To access the Sandbox site go to <http://sandbox.hudhdx.info>.
- Communities may use Sandbox year round to monitor AHAR data quality
- Changes and data entered into the Sandbox cannot be transferred to the live HDX site.



Poll Question #1

The reason(s) why the AHAR is important is it's:

- a) The nation's primary source of information on homelessness
- b) An overview of homelessness within each community.
- c) A good gauge of each CoC's HMIS implementation.
- d) Helpful on a CoC's funding application.
- e) All of the above.



Poll Question #2

The data quality thresholds for participation in the AHAR are:

- a) 50% HMIS bed coverage.
- b) Reasonable bed utilization rates, typically between 65—105%.
- c) Reasonable missing data rates.
- d) All of the above.



Poll Question #3

True or False:

Data must be useable across all six AHAR reporting categories for a CoC's data to be accepted?



The AHAR Process

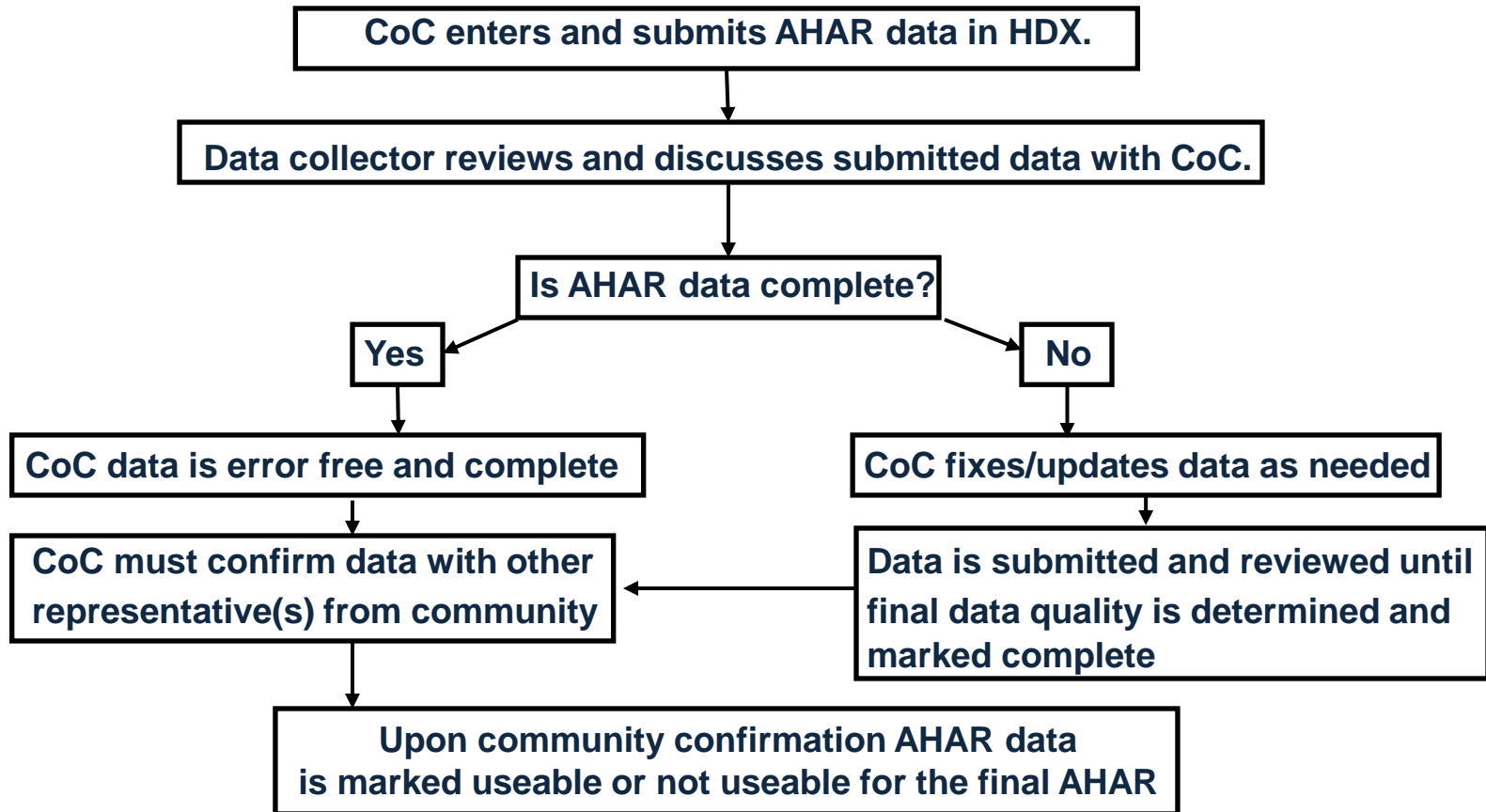


Preparing for the AHAR

- Run local HMIS reports and begin cleaning data
 - Check bed utilization rates
 - Find missing data
 - Test data in the HDX Sandbox
- Attend trainings (like this one) about how to use the HDX and submit data
- Download and read AHAR guide and FAQs from the HDX
- Confirm HIC bed numbers and bed coverage in the HDX
- Prepare notes for AHAR data collector
- Be aware of the reporting deadlines



Submitting HMIS data to AHAR



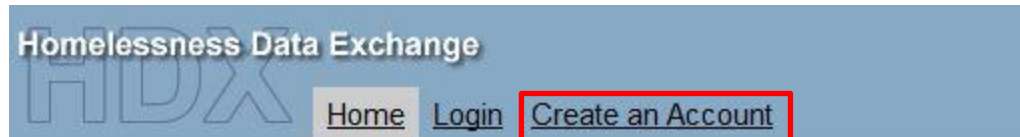


Homelessness Data Exchange (HDX)



Registration and Login Process

- **Website:** <http://hudhdx.info>
- **Logging in:** To access the HDX, you use the same username and password as you did for www.HMIS.info.
- If you do not have an existing account at for the HDX, you can obtain one from the HDX:



Welcome to the Homelessness Data Exchange website

- **Rights:** The CoC Primary must assign “rights” to appropriate people. Every CoC has a primary contact for the HDX, usually the CoC lead person (as identified in the Exhibit 1).



Tips for Using the HDX site

- Be sure you know who has submit rights for your CoC before the deadline!
- Check the validation report at the end of each reporting category before submitting
- FAQs on how to use HDX:
<http://www.hmis.info/ClassicAsp/documents/HDX%20FAQs.pdf>



Live Demonstration of HDX



HDX Admin

Firefox | Housing and Urban Devel... | http://hudhdx.info/Default.aspx?home

Most Visited | Getting Started | Latest Headlines | Bookmarks

TUESDAY, SEPTEMBER 27, 2011

HUD.GOV
U.S. Department of Housing and Urban Development
Secretary Shaun Donovan

Connect with HUD
Busque Información en Español
Welcome, Natalie Matthews | Log Out

Homelessness Data Exchange | Now viewing data for: IL-500 - McHenry County CoC

Home | Dashboard | HIC | PIT | AHAR | PULSE | Messages | Reports | **HDX Admin**

Welcome to the Homelessness Data Exchange website

The Homelessness Data Exchange (HDX)

The Homelessness Data Exchange is an on-line tool designed to allow Homeless Continuums of Care to submit data to the U.S. Department of Housing and Urban Development for:

- [The Annual Housing Inventory Count](#)
- [Homeless Point-in-Time Counts](#)
- [The Annual Homeless Assessment Report](#), and
- Quarterly Homeless Counts through [the Homelessness Pulse Project](#)

These reports are based primarily on data collected and maintained in Homeless Management Information Systems (HMIS).

Users who are the designated contact for submitting their community data may [login](#) using their HMIS.info account.

To view and test the HIC, PIT, PULSE and AHAR data collection screens, go to the [HDX Sandbox](#)

The Housing Inventory Count (HIC)

The Housing Inventory Count collects information about all of the beds and units in each Continuum of Care homeless system, categorized by five Program Types.

- Emergency Shelter: Total number of emergency shelter beds and units that are designated to serve people who are homeless and are recognized as part of the formal homeless system.
- Transitional Housing: Total number of transitional housing beds and units designated to serve people who are homeless and are recognized as part of the formal homeless system.
- HPRP Homeless Assistance (new for 2010): Total number of HPRP Homeless Assistance beds and units occupied on the night the annual inventory.

DEADLINES

4/1/11 - 5/31/11 HIC Data Entry Deadline
5/1/11 - 5/31/11 PIT Data Entry Deadline

AHAR Local Reports

Register as an AHAR site

HDX RESOURCES

[2011 HIC Instructions](#)
[2011 HIC Guidance](#)
[2011 PIT Guidance](#)

[Module VI - PULSE](#)
[Module VII - AHAR 101](#)
[Module VIII - Advanced AHAR](#)

Frequently Asked Questions

[HDX FAQ \(Updated 5/21/2010\)](#) - FAQ for the HDX in general and PIT/HIC in particular
[AHAR FAQ](#) - Provides detailed answers for common questions specific to the AHAR
[Introductory Guide to the AHAR](#) - This guidebook provides background information and guidance on the Annual Homeless Assessment Report (AHAR).
[AHAR Reports](#) - All Published AHAR Reports.

3:45 PM 9/27/2011



HDX Admin (cont'd)

Firefox | Housing and Urban Devel... | http://sandbox.hudhdx.info/User/HdxAdmin.aspx

Most Visited | Getting Started | Latest Headlines

TUESDAY, SEPTEMBER 27, 2011

HUD.GOV
U.S. Department of Housing and Urban Development
Secretary Shaun Donovan

Homelessness Data Exchange | Now viewing data for: CO-193 - CoC for natalie_matthews

Home | Dashboard | HIC | PIT | AHAR | PULSE | Messages | Reports | **HDX Admin**

HDX Admin

User	CoC	Housing Inventory			PIT Counts			AHAR			PULSE		
	Primary	Read	Write	Submit	Read	Write	Submit	Read	Write	Submit	Read	Write	Submit
natalie_matthews	<input type="radio"/>	<input checked="" type="checkbox"/>	<input checked="" type="checkbox"/>	<input type="radio"/>	<input checked="" type="checkbox"/>	<input checked="" type="checkbox"/>	<input type="radio"/>	<input checked="" type="checkbox"/>	<input checked="" type="checkbox"/>	<input type="radio"/>	<input checked="" type="checkbox"/>	<input checked="" type="checkbox"/>	<input type="radio"/>

Developed under contract with the U.S. Department of Housing and Urban Development
[Privacy Statement](#) [Technical Support](#)

Download [Adobe Acrobat Reader](#) to view PDF files located on this site.

[RECOVERY.GOV](#) | [Busque Información en Español](#) | [Accessibility](#) | [Contact Info](#) | [Privacy Policy](#) | [FOIA](#) | [Web Policies and Important Links](#)

U.S. Department of Housing and Urban Development
451 7th Street S.W., Washington, DC 20410
Telephone: (202) 708-1112 TTY: (202) 708-1455
[Find the address of the HUD office near you](#)

3:58 PM 9/27/2011



Dashboard

Firefox Housing and Urban Devel... http://sandbox.hudhdx.info/User/Default.aspx

Home **Dashboard** HIC PIT AHAR PULSE Messages Reports HDX Admin

Reporting Status for CO-193 - CoC for natalie_matthews

As primary contact for this CoC, you may access the [HDX Admin](#)

Housing Inventory Counts Report Due: 5/31/2011 Status: No 2011 Data Errors: - Warnings: - Date of Inventory Count: - Total Organizations: 0 Total Programs: 0 Total Year-Round Beds: - Total Sheltered PIT: - Utilization Rate: - Updated By: - Updated On: - Copy data from 2010 View HIC	Point-in-Time Counts Report Due: 5/31/2011 Status: - Errors: - Warnings: - Sheltered Populations (most recent count) Date of Count: - Total Persons: - Total Households: - Unsheltered Populations (most recent count) Date of Count: - Total Persons: - Total Households: - View PIT
AHAR² Final Draft Due: 01/18/11 Errors: n/a Usability Errors: n/a No AHAR Sites for this CoC or not participating in 2010 AHAR.	PULSE Report Due: 08/11/2010 Status: Not Started Errors: n/a Warnings: n/a Quarterly Count All Clients (most recent count) Reporting Quarter: n/a Total Persons: n/a Total Households: n/a New Clients During Quarter (most recent count) Reporting Quarter: n/a Total Persons: n/a Total Households: n/a Updated By: n/a Updated On: n/a View PULSE

4:01 PM 9/27/2011



AHAR

Most Visited Getting Started Latest Headlines

Bookmarks

TUESDAY, SEPTEMBER 27, 2011

HUD.GOV
U.S. Department of Housing and Urban Development
Secretary Shaun Donovan



Busque Información en Español

Welcome, natalie_matthews | Log Out
Sandbox

Homelessness Data Exchange

Now viewing data for: CO-193 - CoC for natalie_matthews

Home Dashboard HIC PIT AHAR PULSE Messages Reports HDX Admin
AHAR Site Status My Data Upload

Year: 2010 Site/Type: Testsite for natalie_matthews - All
Contact: natalie_matthews AHAR Team Contact: test33

Confirm (You must complete each category before you can confirm data.)

Shell - Reporting Type	% Complete	Validation	Reporting Status	Status	Used in Final AHAR
ES-FAM Emergency Shelters for Families Last Update: n/a	0%	0 Errors 0 Usability Errors	Not Selected New Message	Not Started	TBD
ES-IND Emergency Shelters for Individuals Last Update: n/a	0%	0 Errors 0 Usability Errors	Not Selected New Message	Not Started	TBD
TH-FAM Transitional Housing for Families Last Update: n/a	0%	0 Errors 0 Usability Errors	Not Selected New Message	Not Started	TBD
TH-IND Transitional Housing for Individuals Last Update: n/a	0%	0 Errors 0 Usability Errors	Not Selected New Message	Not Started	TBD
PSH-FAM Permanent Supportive Housing for Families Last Update: n/a	0%	0 Errors 0 Usability Errors	Not Selected New Message	Not Started	TBD

Windows taskbar showing icons for Internet Explorer, Firefox, File Explorer, and other applications. System tray shows the time as 4:04 PM on 9/27/2011.





Entering Data

HUD.GOV
U.S. Department of Housing and Urban Development
Secretary Shaun Donovan

Homelessness Data Exchange Now viewing data for: CO-193 - CoC for natalie_matthews

Home Dashboard HIC PIT AHAR PULSE Messages Reports HDX Admin

Year: 2010 Site/Type: **Testsite for natalie_matthews - All**
ES-FAM: Emergency Shelters for Families

Total Counts	Demographics	Prior Living Situation	Length of Stay	Household Counts	Long-term Stay Demographics	Validation Report	Notes
0 of 2	0 of 8	0 of 3	0 of 2	0 of 1	0 of 6		0

Total Counts

Save & Prev Save & Next View/Edit Notes (0)

Most Recent Note: No notes yet

ES-FAM Question 1: Total Number of Persons in Families Who Used Emergency Shelters During Covered Time Period [\(Click to hide all errors/warnings\)](#)

Unduplicated number of Persons in Families* that used Emergency Shelters participating in HMIS a. [Log](#)

Number of emergency, year-round equivalent shelter beds *for Persons in Families included in HMIS (i.e., bed capacity for participating providers) b. [Log](#)

Number of emergency, year-round equivalent shelter beds *for Persons in Families at providers not participating in HMIS (i.e., bed capacity for non-participating providers) c. [Log](#)

4:07 PM 9/27/2011



Notes

Most Visited Getting Started Latest Headlines

TUESDAY, SEPTEMBER 27, 2011

HUD.GOV
U.S. Department of Housing and Urban Development
Secretary Shaun Donovan

Homelessness Data Exchange
AHAR Site Status My Data

Year: 2010 Site/Type: ES-FAM: Emergency Shelter

Total Counts Demographics
0 of 2 0 of 2

Total Counts
Save & Prev

Most Recent Note: No notes for this question

ES-FAM Question 1: errors/warnings

Unduplicated Families* that use...

Number of equivalent shelter Families included in...

Number of equivalent shelter Families at providers not reporting to HMIS (i.e., bed capacity for non-participating providers)

Notes - Mozilla Firefox

http://sandbox.hudhdx.info/Survey/Note.aspx?qttext=&qNumber=1

Notes Close

Section	Total Counts
Question 1	
Note	

Add Note

No notes for this question

Save & Next

View/Edit Notes (0)

4:08 PM 9/27/2011



In Progress

The screenshot shows the HUD.gov AHAR data exchange interface. The page title is "HUD.GOV U.S. Department of Housing and Urban Development Secretary Shaun Donovan". The user is logged in as "natalie_matthews" and is viewing data for "CO-193 - CoC for natalie_matthews". The interface includes a navigation menu with options like "Home", "Dashboard", "HIC", "PIT", "AHAR", "PULSE", "Messages", "Reports", and "HDX Admin".

The main content area displays a table of reporting types with the following columns: Shell - Reporting Type, % Complete, Validation, Reporting Status, Status, and Used in Final AHAR. The table lists five reporting types: ES-FAM, ES-IND, TH-FAM, TH-IND, and PSH-FAM. The ES-FAM row is highlighted with a red box, indicating it is in progress. The "Validation" column for ES-FAM shows "22 Errors" and "1 Usability Errors", with a "Validation Report" link. The "Reporting Status" column for ES-FAM shows "Reporting" with a "New Message" link. The "Status" column for ES-FAM shows "In Progress" with a checkmark icon. The "Used in Final AHAR" column for ES-FAM shows "TBD".

Shell - Reporting Type	% Complete	Validation	Reporting Status	Status	Used in Final AHAR
ES-FAM Emergency Shelters for Families <i>Last Update: 9/27/2011 (natalie_matthews)</i>	0%	22 Errors 1 Usability Errors Validation Report	Reporting New Message	In Progress	TBD
ES-IND Emergency Shelters for Individuals <i>Last Update: n/a</i>	0%	0 Errors 0 Usability Errors	Not Selected New Message	Not Started	TBD
TH-FAM Transitional Housing for Families <i>Last Update: n/a</i>	0%	0 Errors 0 Usability Errors	Not Selected New Message	Not Started	TBD
TH-IND Transitional Housing for Individuals <i>Last Update: n/a</i>	0%	0 Errors 0 Usability Errors	Not Selected New Message	Not Started	TBD
PSH-FAM Permanent Supportive Housing for Families <i>Last Update: n/a</i>	0%	0 Errors 0 Usability Errors	Not Selected New Message	Not Started	TBD



Validation Report

Most Visited Getting Started Latest Headlines Bookmarks

Homelessness Data Exchange Now viewing data for CO-193 - CoC for natalie_matthews Welcome, natalie_matthews | Log Out Sandbox

Home Dashboard HIC PIT AHAR PULSE Messages Reports HDX Admin AHAR Site Status My Data Upload

Year: 2010 Site/Type: Testsite for natalie_matthews - All ES-FAM: Emergency Shelters for Families

Total Counts	Demographics	Prior Living Situation	Length of Stay	Household Counts	Long-term Stay Demographics	Validation Report	Notes
0 of 2	0 of 8	0 of 3	0 of 2	0 of 1	0 of 6		0

Validation Report

Export to Excel

Usability Warnings

Section	Question #	Question	Field	Error
Total Counts	1	Total Number of Persons in Families Who Used Emergency Shelters During Covered Time Period	Beds in HMIS	The bed coverage rate is low (0%). Bed Coverage rates lower than 50% may affect whether your data is useable in the AHAR. If you haven't already, please include an explanation for this rate in the Notes section (Fix This) or (Add/Edit Note)

Validation Errors

Show All Questions (whether there are errors or not)

Section	Question #	Question	Field	Error
Total Counts	1	Total Number of Persons in Families Who Used Emergency Shelters During Covered Time Period		Question not complete. Missing: Unduplicated count of persons, Persons in multiple shelters (Fix This)
Total Counts	2	How many Persons in Families were using Emergency Shelters ...		Question not complete. Missing: Persons on average night, Persons on October night, Persons on January night, Persons on April night, Persons on July night (Fix This)
Demographics	3	Age		Question not complete. Missing fields required to calculate: Sum of persons by age, Sum of children by age, Sum of adults by age (Fix This)
Demographics	4	Gender		Question not complete. Missing fields required to calculate: Persons with known adult/child status, children by gender, adults by gender (Fix This)
Demographics	5	Ethnicity		Question not complete. Missing fields required to calculate: Sum of persons by ethnicity (Fix This)
Demographics	6	Race		Question not complete. Missing fields required to calculate: Sum of persons by race (Fix This)
Demographics	7	Persons by Household Size		Question not complete. Missing fields required to calculate: Sum of persons by household sizes (Fix This)
Demographics	8	Persons by Household Type		Question not complete. Missing fields required to calculate: Sum of persons by household type (Fix This)
Demographics	9	Veteran Status		Question not complete. Missing fields required to calculate: Sum of veterans (Fix This)


Windows taskbar showing icons for Internet Explorer, Firefox, File Explorer, and other applications. System tray shows the time as 4:09 PM on 9/27/2011.



Resources

Firefox Housing and Urban Devel... http://sandbox.hudhdx.info/Default.aspx?home

Most Visited Getting Started Latest Headlines



This "Sandbox" site is designed for public viewing and testing the HIC, PIT, PULSE and AHAR data collection screens.

It does not contain all the functionality planned for the final site.

To participate in the HIC, PIT, PULSE or AHAR, you must log into hudhdx.info and submit your actual data there.

To use this sandbox site, first create a sandbox account, from the login page.

Creating a login allows you to return to any previous testing work.

The Homelessness Data Exchange (HDX)

The Homelessness Data Exchange is an on-line tool designed to allow Homeless Continuums of Care to submit data to the U.S. Department of Housing and Urban Development for:

- [The Annual Housing Inventory Count.](#)
- [Homeless Point-in-Time Counts.](#)
- [The Annual Homeless Assessment Report,](#) and
- [Quarterly Homeless Counts through the Homelessness Pulse Project.](#)

These reports are based primarily on data collected and maintained in Homeless Management Information Systems (HMIS).

To view and test the HIC, PIT, PULSE and AHAR data collection screens, go to the [HDX Sandbox](#)

The Housing Inventory Count (HIC)

The Housing Inventory Count collects information about all of the beds and units in each Continuum of Care homeless system, categorized by five Program Types.

- Emergency Shelter: Total number of emergency shelter beds and units that are designated to serve people who are homeless and are recognized as part of the formal homeless system.
- Transitional Housing: Total number of transitional housing beds and units designated to serve people who are homeless and are recognized as part of the formal homeless system.
- HPRP Homeless Assistance (new for 2010): Total number of HPRP Homeless Assistance beds and units occupied on the night the annual inventory.
- Safe Haven: Total number of Safe Haven beds and units that satisfy HUD's standards, as identified in the 2009 NOFA.
- Permanent Supportive Housing: Total number of permanent supportive housing beds and units.

DEADLINES

4/1/11 - 5/31/11 HIC Data Entry Deadline

5/1/11 - 5/31/11 PIT Data Entry Deadline

Register as an AHAR site

HDX RESOURCES

[2011 HIC Instructions](#)
[2011 HIC Guidance](#)
[2011 PIT Guidance](#)

[Module VI - PULSE](#)
[Module VII - AHAR 101](#)
[Module VIII - Advanced AHAR](#)

Frequently Asked Questions
[HDX FAQ \(Updated 5/21/2010\)](#) - FAQ for the HDX in general and PIT/HIC in particular
[AHAR FAQ](#) - Provides detailed answers for common questions specific to the AHAR
[Introductory Guide to the AHAR](#) - This guidebook provides background information and guidance on the Annual Homeless Assessment Report (AHAR).
[AHAR Reports](#) - All Published AHAR Reports.
[AHAR XML Upload Tools](#) - These resources include the AHAR XML Schema and other tools to help developers building tools to upload data directly to the HDX.
[AHAR Technical Assistance Documents](#) - Documents that provide assistance for the AHAR report.
[AHAR Tools](#) - Tools helping communities prepare to contribute data for the AHAR
[AHAR Updates](#) - All updated information for AHAR
[AHAR Conference Presentations](#) - Presentations from the AHAR Institute at the HMIS Conference
[See all AHAR related documents on HMIS.info](#)

4:00 PM 9/27/2011



HDX AHAR Reports

- The Reports option in the HDX provides access to various reports for your community.
- These reports include:
 - Data Summary
 - Extrapolated Counts
 - Demographics Report
 - Prior Living Situation
 - Length of Stay
 - Long Term Stay



Poll Question #4

Which of the following websites must you have a login username and password before you can use the HDX?

- a) HUDHRE.info
- b) HMIS.info
- c) *e-snaps*



Poll Question #5

What is the first thing that you should do in HDX for the AHAR?

- a) Enter your data
- b) Ensure CoC contacts are correct on the HDX Admin tab
- c) Change your password



Next Steps and Resources



AHAR Part 2: Steps to a Successful Data Submission

- Webinar on Tuesday, October 23rd from 3:30pm-4:30pmEDT
- **Separate registration is required**
- Topics to be covered: HUD guidance for the 2012 AHAR; tips for reviewing and proofing your data; and how to work with your AHAR Data Collector



The 2012 AHAR

- Data collection for the 2012 AHAR has already begun! Check to see if your CoC has:
 - Expanded HMIS Bed Coverage?
 - Improved Data Quality?
 - Simplified the AHAR reporting process?
 - Identified CoC data review process?



Questions/Comments?

- Submit question through the Virtual Help Desk at <http://hudhre.info/helpdesk>. **Select “HDX”** as your Program/System when asking the question.



Survey and Mark Course Complete

- Please complete the online survey and mark the course as complete in the LMS to add it to your transcript!
- Both are now hosted in the LMS; you'll receive link via email later today.