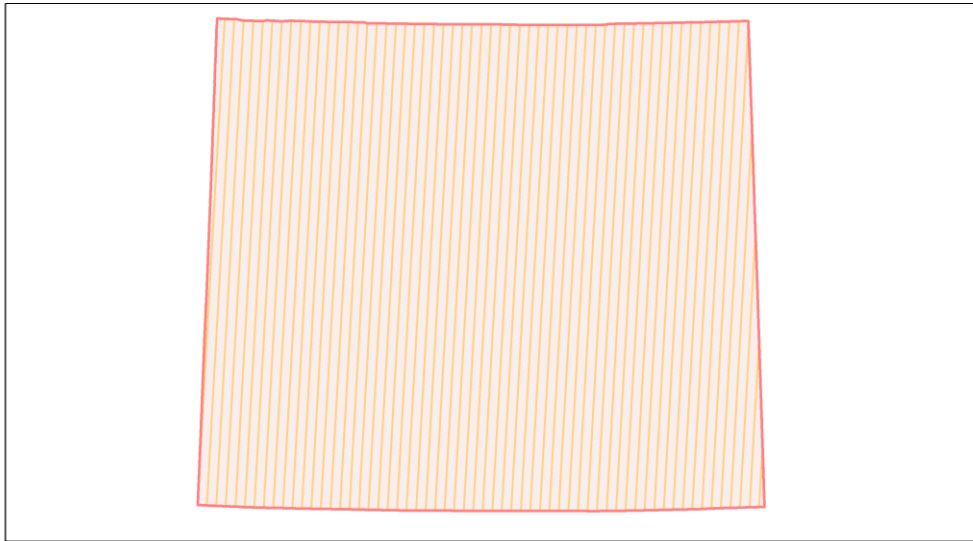
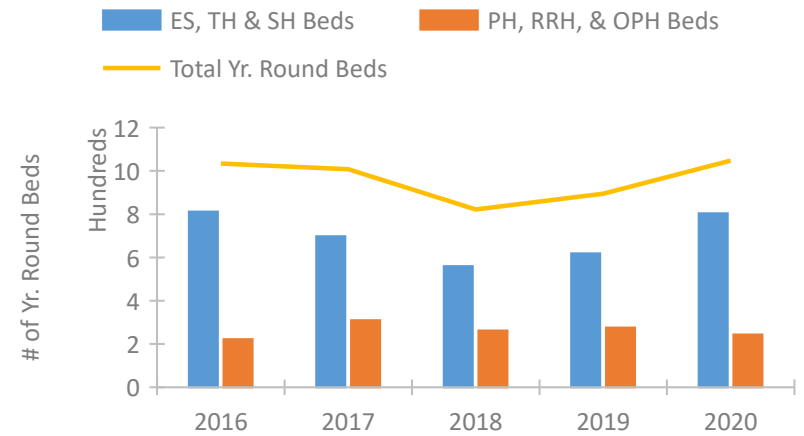


Wyoming Continuum of Care Performance Profile

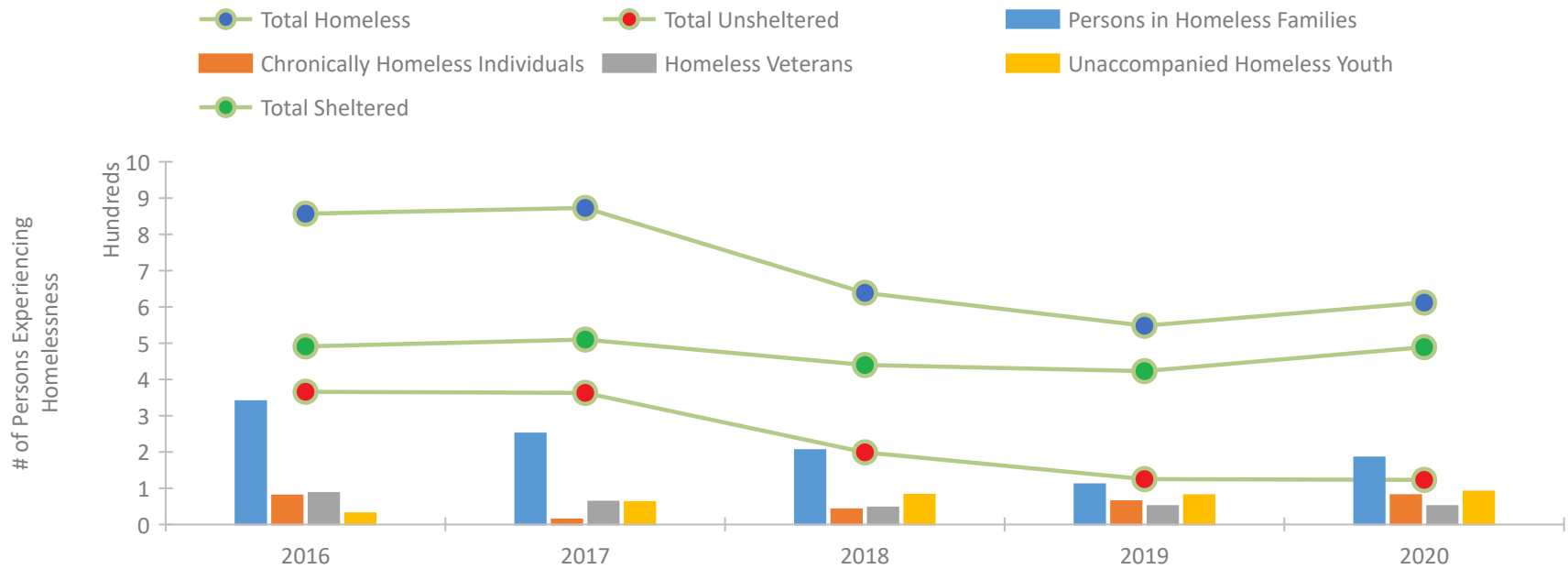


2020 CoC Boundaries 2019 CoC Boundaries

Housing Inventory Count by Program Type

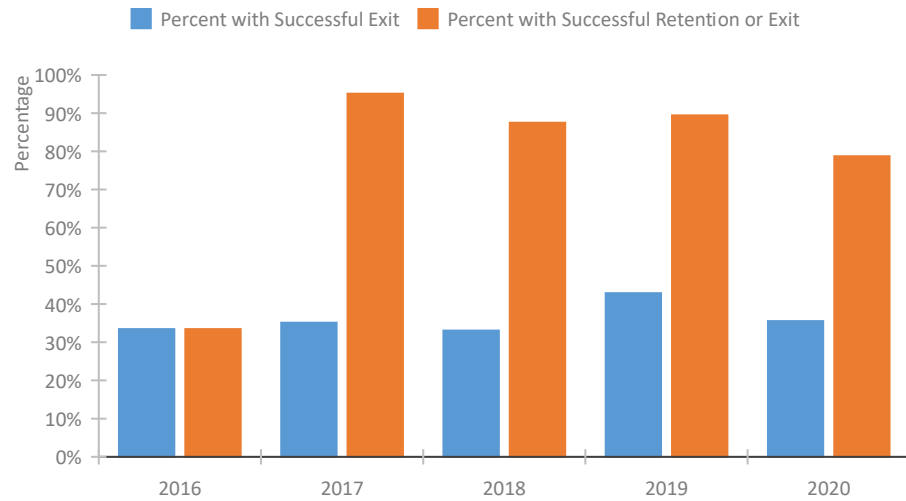


Homeless Population – Point-in-Time (PIT) Count

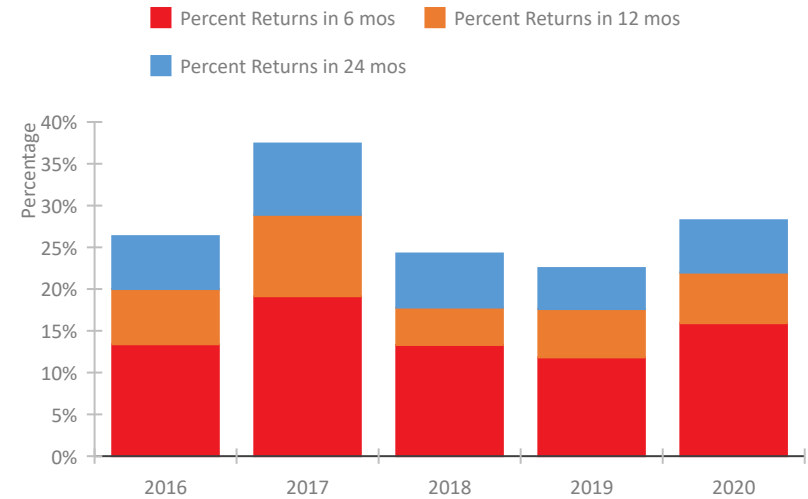


Wyoming Continuum of Care Performance Profile

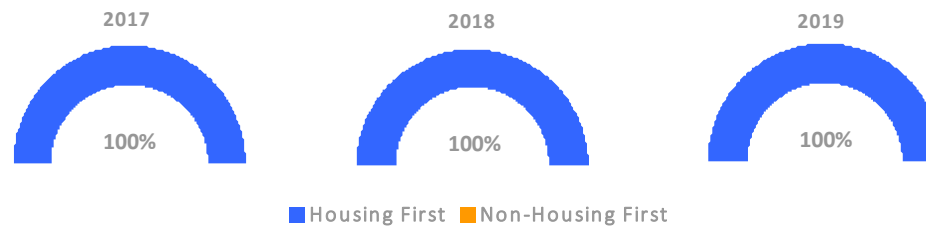
Exits to Permanent Housing by Program Type



Returns to Homelessness Over Time



Proportion of Housing First Projects by Year*



Number of Projects by Year

	2017	2018	2019
Housing First Projects	3	3	3
Non-Housing First Projects	0	0	0

*In 2020 HUD awarded renewal projects noncompetitively, therefore no new data was collected and Housing First data remains the same from 2019 to 2020.

Data Summary: Wyoming

Point-In-Time Count Summary

	2016	2017	2018	2019	2020	2019-20 Change	% Change
Number of Sheltered Persons in Families	214	127	141	94	179	85	90%
Number of Unsheltered Persons in Families	126	124	64	17	6	-11	-65%
Number of Sheltered Individuals	277	383	299	329	310	-19	-6%
Number of Unsheltered Individuals	240	239	135	108	117	9	8%
Total Homeless Persons	857	873	639	548	612	64	12%
Number of Sheltered Families	77	55	56	31	48	17	55%
Number of Unsheltered Families	33	41	21	6	2	-4	-67%
Number of Total Families	110	96	77	37	50	13	35%
Sheltered Chronically Homeless Individuals	29	14	42	23	24	1	4%
Unsheltered Chronically Homeless Individuals	51	0	0	41	57	16	39%
Total Chronically Homeless Individuals	80	14	42	64	81	17	27%
Sheltered Veterans	56	50	47	43	45	2	5%
Unsheltered Veterans	31	13	0	8	6	-2	-25%
Total Veterans	87	63	47	51	51	0	-0%
Sheltered Unaccompanied Youth (up to 24)	24	43	68	64	79	15	23%
Unsheltered Unaccompanied Youth (up to 24)	7	19	14	17	12	-5	-29%
Total Unaccompanied Youth (up to 24)	31	62	82	81	91	10	12%

System Performance Measures Summary

	2016	2017	2018	2019	2020	2019-20 Change	% Change
Rate People Return to Homelessness in 6 Months	13.4%	19.1%	13.3%	11.8%	15.9%	4.1%	N/A
Number of People who are Homeless for the First Time	1,877	2,218	2,106	2,264	1,500	-764	-33.7%
Rate People Exit from ES, SH, TH, and RRH to PH	33.4%	35.1%	33.0%	42.8%	35.5%	-7.3%	N/A
Rate People in PSH and OPH Retain or Exit to PH	33.4%	95.1%	87.5%	89.4%	78.7%	-10.7%	N/A

Housing Inventory Count Summary

	2016	2017	2018	2019	2020	2019-20 Change	% Change
Emergency Shelter (ES)	511	361	345	383	533	150	39%
Transitional Housing (TH)	301	337	215	236	271	35	15%
Permanent Supportive Housing (PSH)	208	285	230	225	210	-15	-7%
Rapid Re-Housing (RRH)	8	25	32	51	34	-17	-33%

Award Summary

	2016	2017	2018	2019	2020	2019-20 Change	% Change
Continuum of Care (CoC)	\$291,611	\$292,970	\$288,790	\$358,277	\$365,824	\$7,547	2%
Emergency Solutions Grants (ESG)	\$311,565	\$310,296	\$313,532	\$323,751	\$334,527	\$10,776	3%
Youth Homelessness Demonstration Program (YHDP)	--	--	\$1,081,363	--	--	--	--