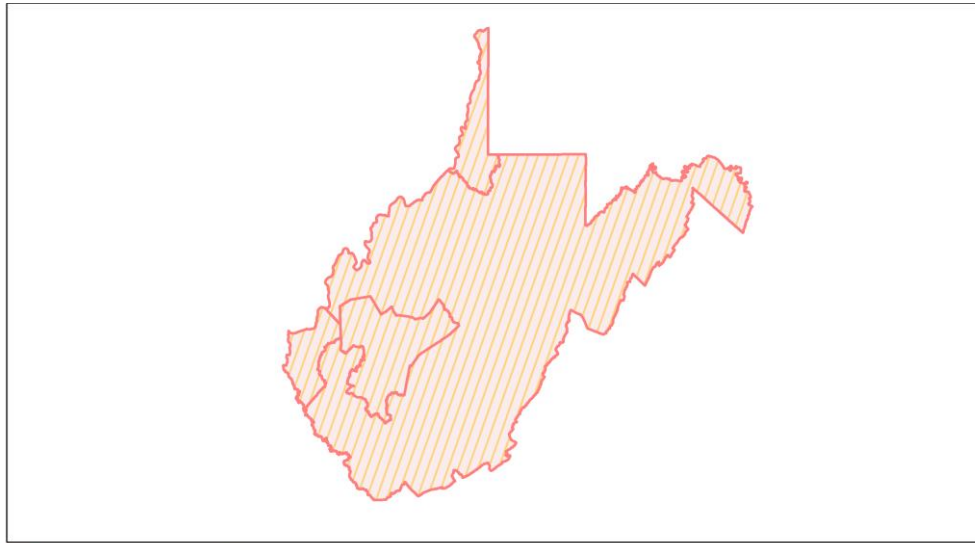
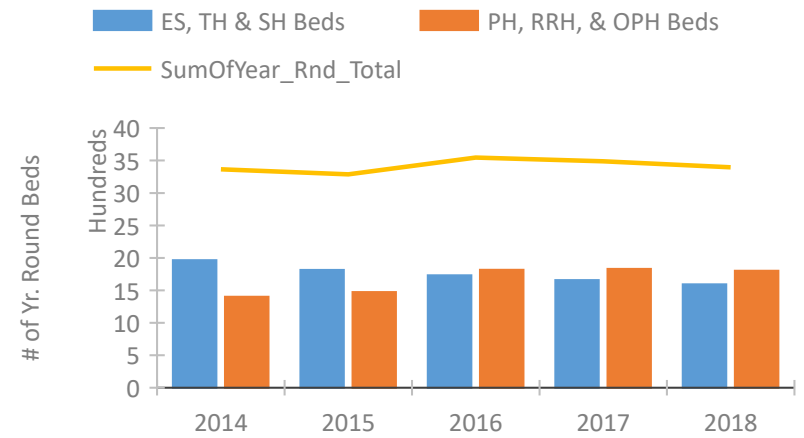


West Virginia Continuum of Care Performance Profile

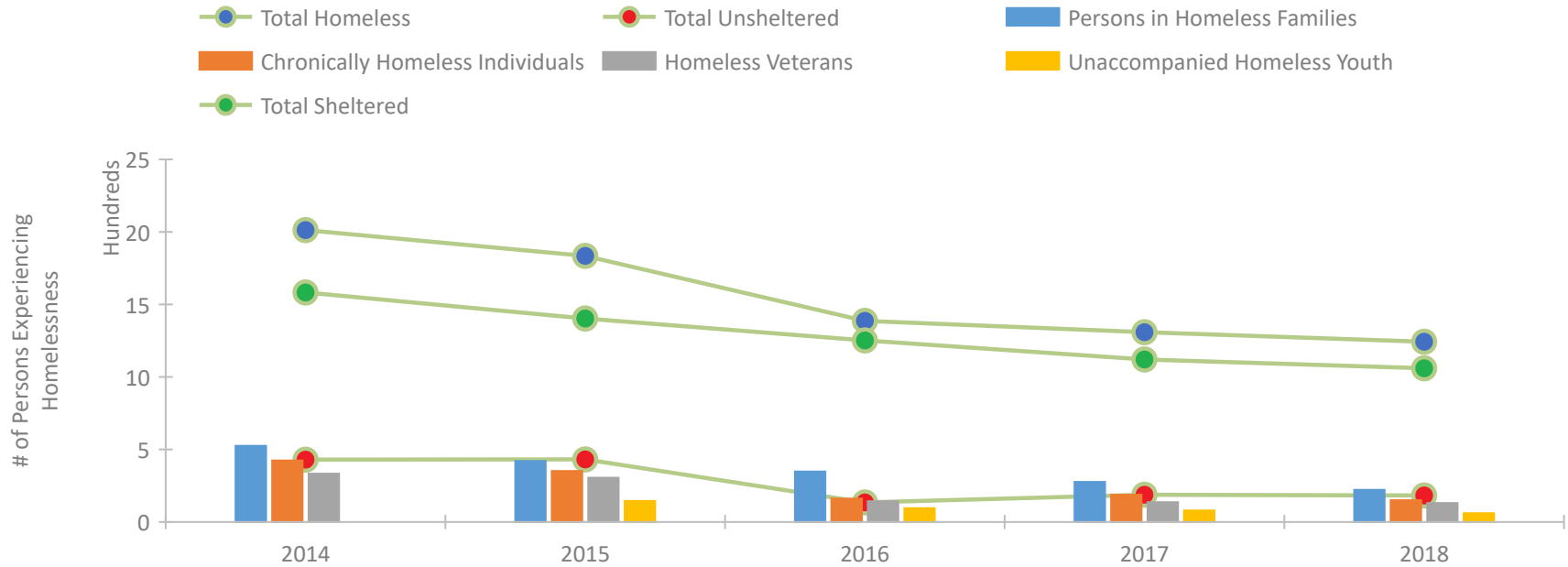


2018 CoC Boundaries 2017 CoC Boundaries

Housing Inventory Count by Program Type

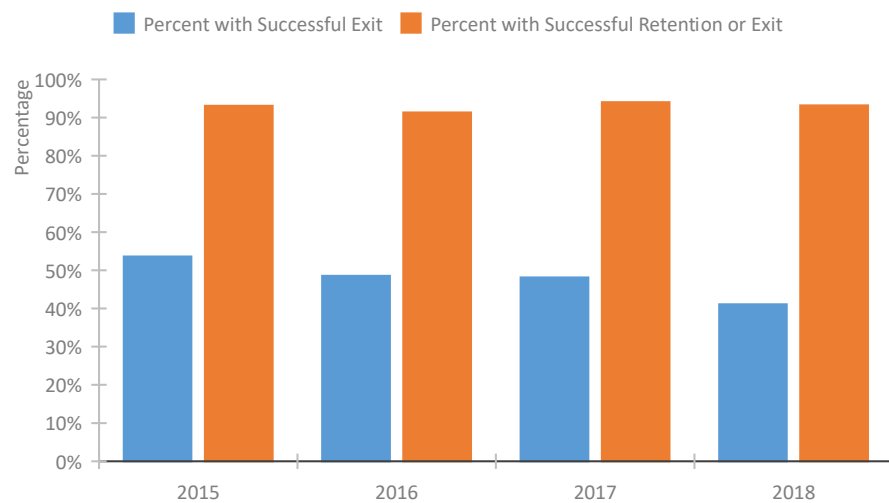


Homeless Population – Point-in-Time (PIT) Count

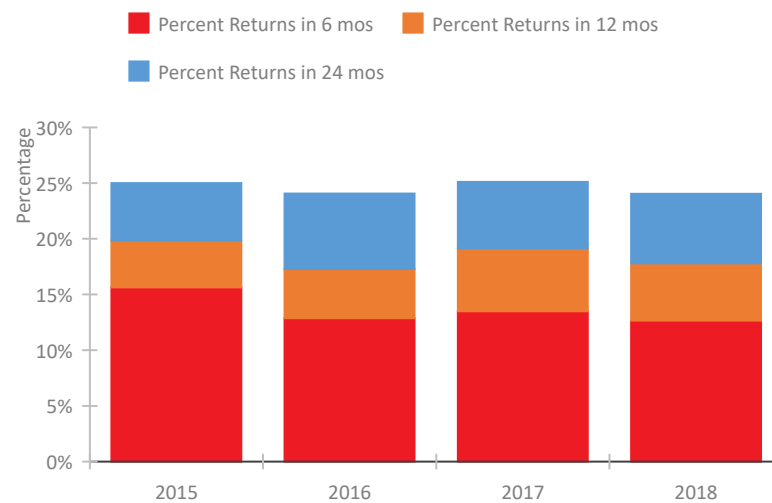


West Virginia Continuum of Care Performance Profile

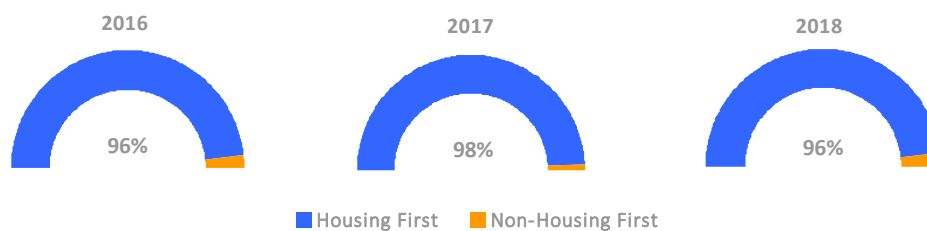
Exits to Permanent Housing by Program Type



Returns to Homelessness Over Time



Proportion of Housing First Projects by Year



Number of Projects by Year

	2016	2017	2018
Housing First Projects	54	57	53
Non-Housing First Projects	2	1	2

Data Summary: West Virginia

Point-In-Time Count Summary

	2014	2015	2016	2017	2018	2017-18 Change	% Change
Number of Sheltered Persons in Families	408	354	348	261	218	-43	-16%
Number of Unsheltered Persons in Families	117	67	0	16	4	-12	-75%
Number of Sheltered Individuals	1,173	1,035	899	853	832	-21	-2%
Number of Unsheltered Individuals	313	365	134	172	179	7	4%
Total Homeless Persons	2,011	1,821	1,381	1,302	1,233	-69	-5%
Number of Sheltered Families	131	108	113	91	72	-19	-21%
Number of Unsheltered Families	42	21	0	4	1	-3	-75%
Number of Total Families	173	129	113	95	73	-22	-23%
Sheltered Chronically Homeless Individuals	279	192	113	131	84	-47	-36%
Unsheltered Chronically Homeless Individuals	145	160	48	57	66	9	16%
Total Chronically Homeless Individuals	424	352	161	188	150	-38	-20%
Sheltered Veterans	303	227	126	124	106	-18	-15%
Unsheltered Veterans	30	78	17	13	25	12	92%
Total Veterans	333	305	143	137	131	-6	-4%
Sheltered Unaccompanied Youth (up to 24)	--	103	83	69	52	-17	-25%
Unsheltered Unaccompanied Youth (up to 24)	--	42	12	10	9	-1	-10%
Total Unaccompanied Youth (up to 24)	--	145	95	79	61	-18	-23%

System Performance Measures Summary

	2014	2015	2016	2017	2018	2017-18 Change	% Change
Rate People Return to Homelessness in 6 Months	N/A	15.6%	12.9%	13.5%	12.7%	-0.8%	N/A
Number of People who are Homeless for the First Time	N/A	5,053	4,961	4,459	4,200	-259	-5.8%
Rate People Exit from ES, SH, TH, and RRH to PH	N/A	53.6%	48.5%	48.1%	41.1%	-7%	N/A
Rate People in PSH and OPH Retain or Exit to PH	N/A	93.1%	91.3%	94.0%	93.2%	-0.9%	N/A

Housing Inventory Count Summary

	2014	2015	2016	2017	2018	2017-18 Change	% Change
Emergency Shelter (ES)	1,363	1,279	1,269	1,338	1,292	-46	-3%
Safe Haven (SH)	13	13	13	13	14	1	8%
Transitional Housing (TH)	589	523	449	306	287	-19	-6%
Permanent Supportive Housing (PSH)	1,219	1,166	1,353	1,239	1,261	22	2%
Rapid Re-Housing (RRH)	73	158	308	262	387	125	48%
Other Permanent Housing (OPH)	108	148	155	330	154	-176	-53%

Award Summary

	2014	2015	2016	2017	2018	2017-18 Change	% Change
Continuum of Care (CoC)	\$7,232,708	\$7,648,101	\$7,761,222	\$8,327,359	\$8,751,479	\$424,120	5%
Emergency Solutions Grants (ESG)	\$1,586,387	\$1,699,844	\$1,680,215	\$1,834,539	\$1,662,113	(\$172,426)	-9%