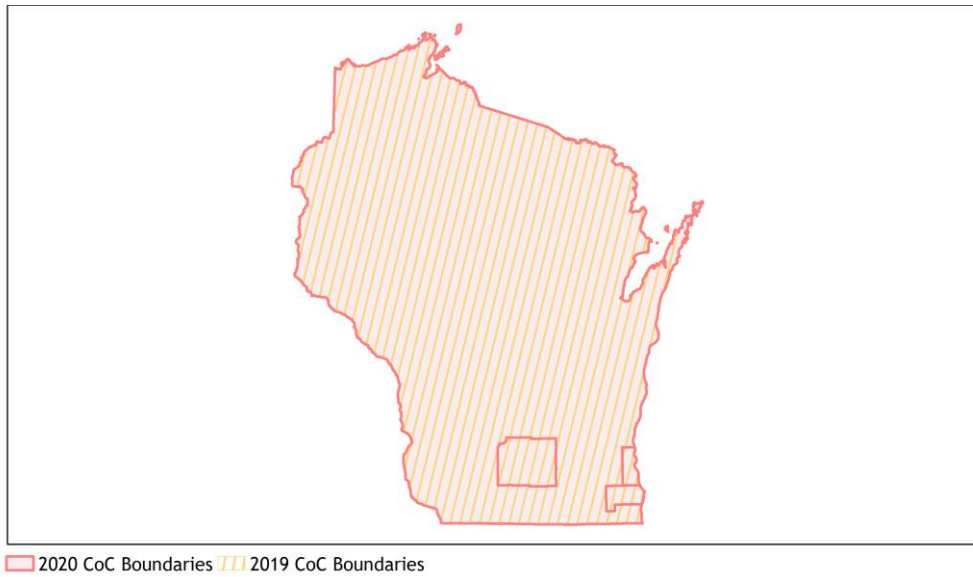
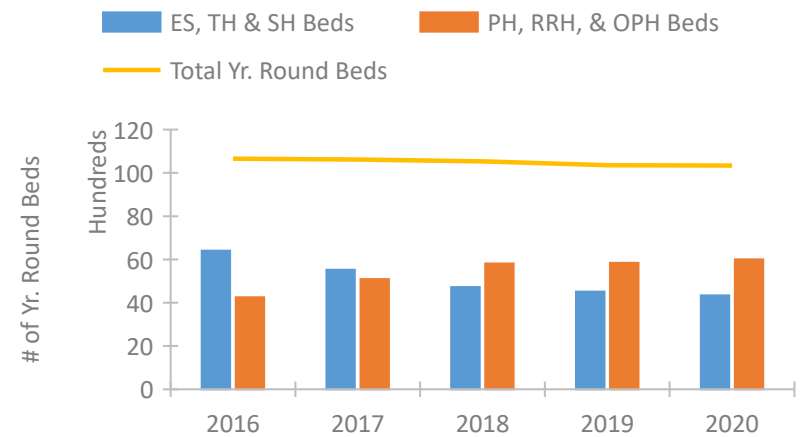


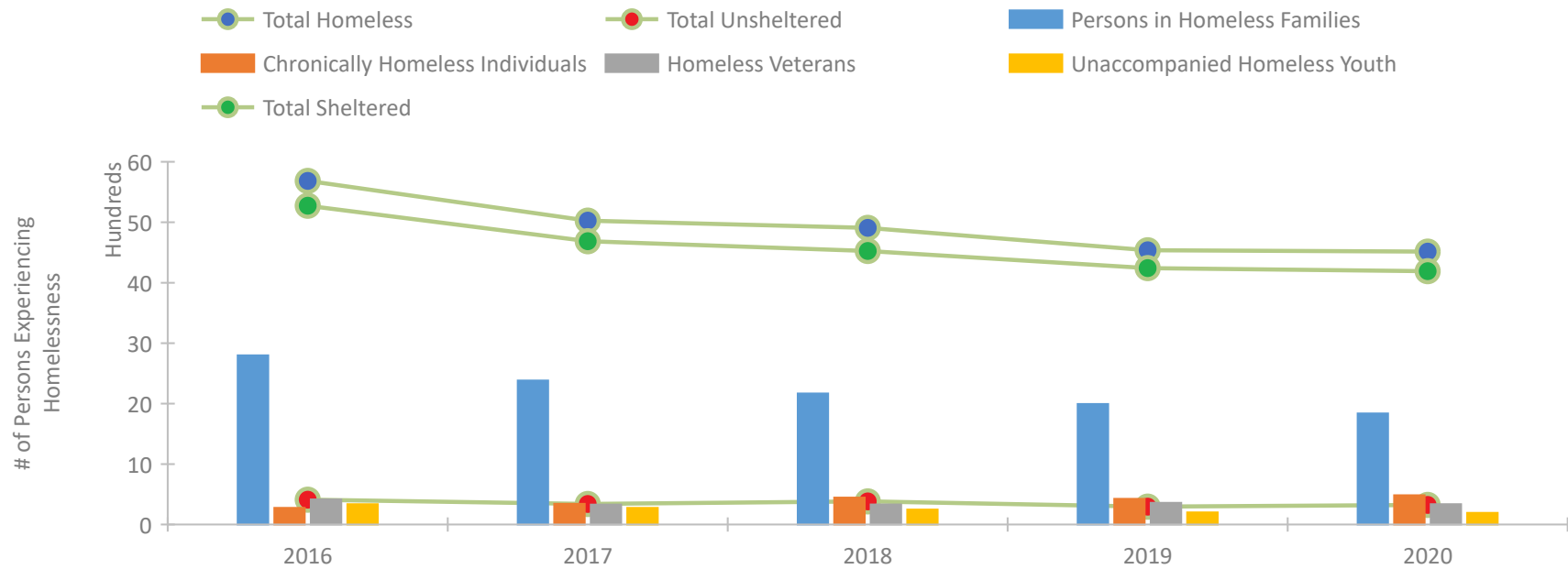
Wisconsin Continuum of Care Performance Profile



Housing Inventory Count by Program Type



Homeless Population – Point-in-Time (PIT) Count

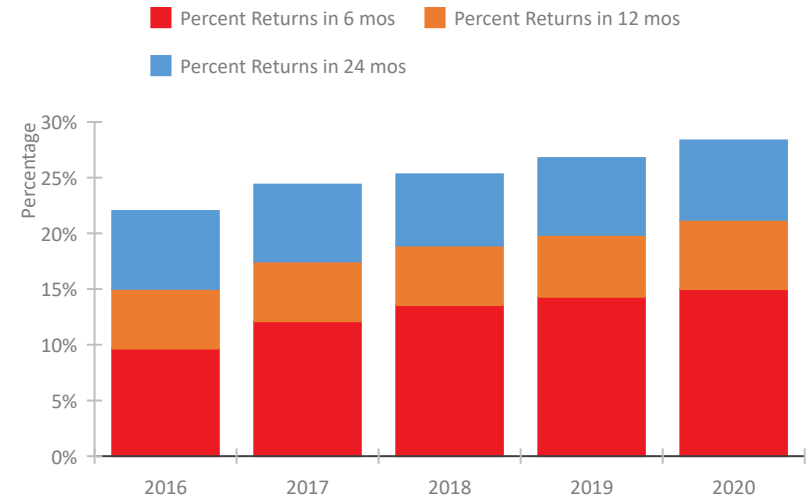


Wisconsin Continuum of Care Performance Profile

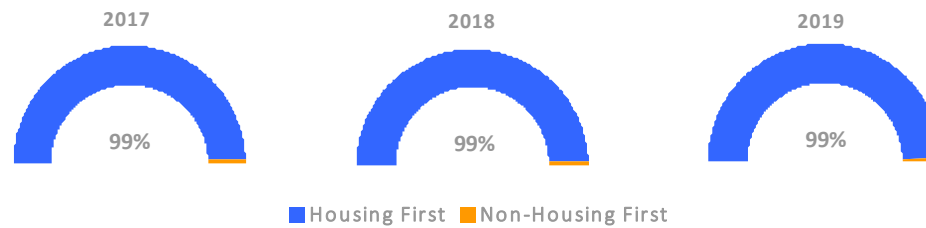
Exits to Permanent Housing by Program Type



Returns to Homelessness Over Time



Proportion of Housing First Projects by Year*



Number of Projects by Year

	2017	2018	2019
Housing First Projects	86	89	79
Non-Housing First Projects	1	1	1

*In 2020 HUD awarded renewal projects noncompetitively, therefore no new data was collected and Housing First data remains the same from 2019 to 2020.

Data Summary: Wisconsin

Point-In-Time Count Summary

	2016	2017	2018	2019	2020	2019-20 Change	% Change
Number of Sheltered Persons in Families	2,780	2,370	2,142	1,980	1,818	-162	-8%
Number of Unsheltered Persons in Families	19	12	25	13	20	7	54%
Number of Sheltered Individuals	2,495	2,317	2,383	2,263	2,373	110	5%
Number of Unsheltered Individuals	391	328	357	282	304	22	8%
Total Homeless Persons	5,685	5,027	4,907	4,538	4,515	-23	-1%
Number of Sheltered Families	856	739	651	589	552	-37	-6%
Number of Unsheltered Families	6	4	9	3	6	3	100%
Number of Total Families	862	743	660	592	558	-34	-6%
Sheltered Chronically Homeless Individuals	209	275	368	332	404	72	22%
Unsheltered Chronically Homeless Individuals	67	67	78	94	80	-14	-15%
Total Chronically Homeless Individuals	276	342	446	426	484	58	14%
Sheltered Veterans	392	309	321	334	320	-14	-4%
Unsheltered Veterans	23	20	11	25	17	-8	-32%
Total Veterans	415	329	332	359	337	-22	-6%
Sheltered Unaccompanied Youth (up to 24)	273	240	215	187	169	-18	-10%
Unsheltered Unaccompanied Youth (up to 24)	64	36	31	13	24	11	85%
Total Unaccompanied Youth (up to 24)	337	276	246	200	193	-7	-4%

System Performance Measures Summary

	2016	2017	2018	2019	2020	2019-20 Change	% Change
Rate People Return to Homelessness in 6 Months	9.7%	12.1%	13.6%	14.3%	15.0%	0.7%	N/A
Number of People who are Homeless for the First Time	15,511	14,483	14,529	13,905	11,570	-2,335	-16.8%
Rate People Exit from ES, SH, TH, and RRH to PH	47.0%	48.5%	44.0%	37.1%	35.7%	-1.5%	N/A
Rate People in PSH and OPH Retain or Exit to PH	94.7%	95.0%	96.0%	97.2%	96.8%	-0.4%	N/A

Housing Inventory Count Summary

	2016	2017	2018	2019	2020	2019-20 Change	% Change
Emergency Shelter (ES)	3,614	3,422	3,190	3,179	3,215	36	1%
Safe Haven (SH)	64	91	68	54	54	0	-0%
Transitional Housing (TH)	2,726	2,012	1,463	1,281	1,072	-209	-16%
Permanent Supportive Housing (PSH)	3,087	3,265	3,583	3,585	3,706	121	3%
Rapid Re-Housing (RRH)	883	1,367	1,598	1,475	1,556	81	5%
Other Permanent Housing (OPH)	271	460	629	783	740	-43	-5%

Award Summary

	2016	2017	2018	2019	2020	2019-20 Change	% Change
Continuum of Care (CoC)	\$23,586,361	\$23,750,589	\$25,556,871	\$26,030,465	\$27,236,931	\$1,206,466	5%
Emergency Solutions Grants (ESG)	\$5,085,219	\$6,014,008	\$5,073,804	\$5,222,720	\$5,410,293	\$187,573	4%
Youth Homelessness Demonstration Program (YHDP)	--	--	--	\$7,521,547	\$2,447,820	(\$5,073,727)	-67%