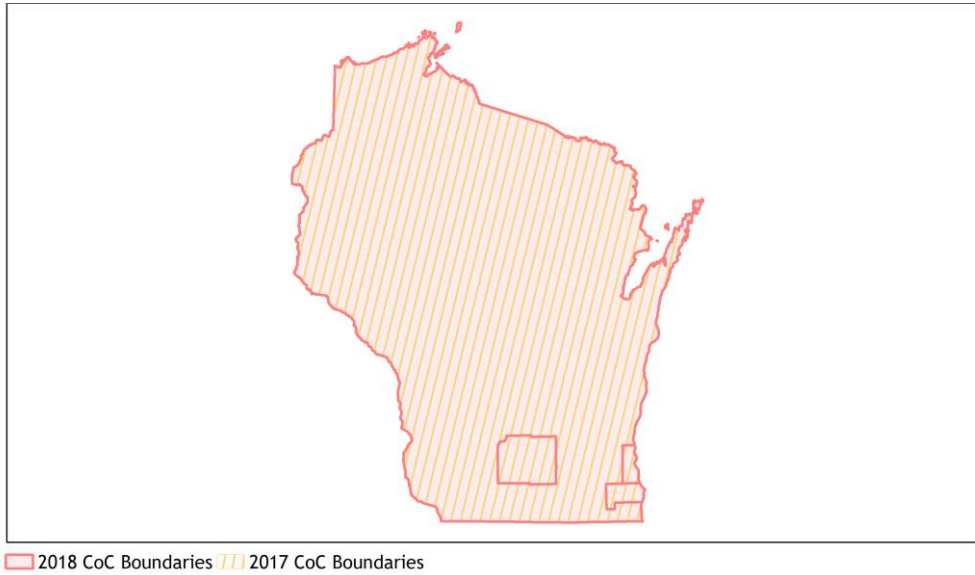
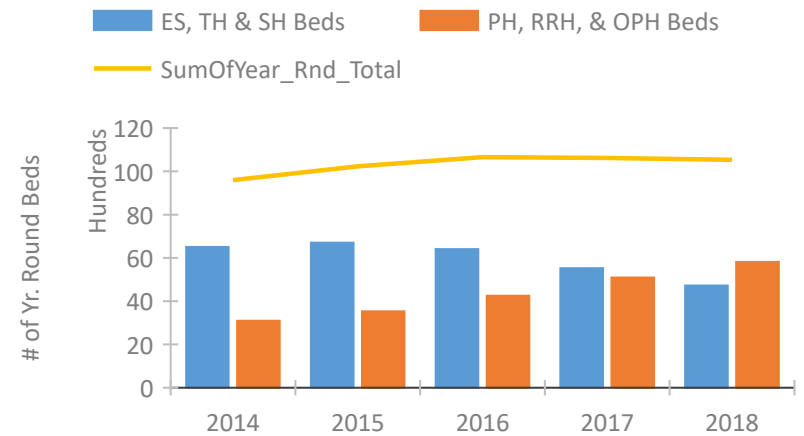


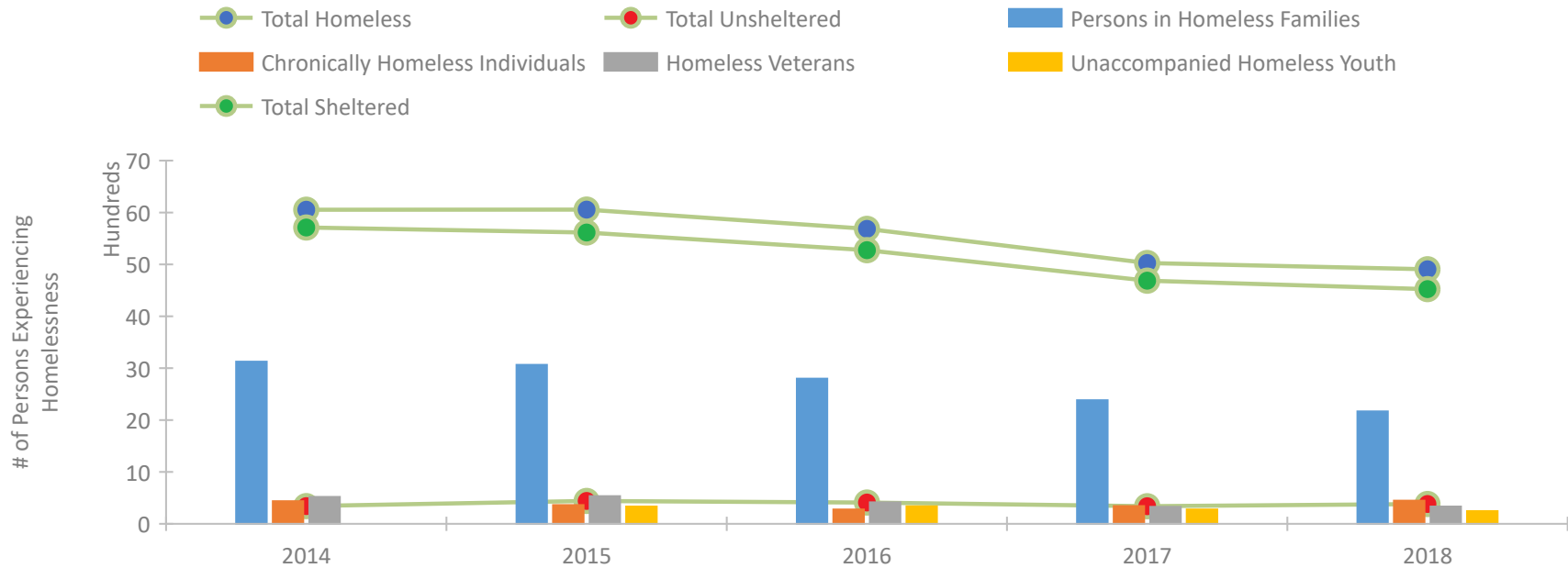
Wisconsin Continuum of Care Performance Profile



Housing Inventory Count by Program Type



Homeless Population – Point-in-Time (PIT) Count

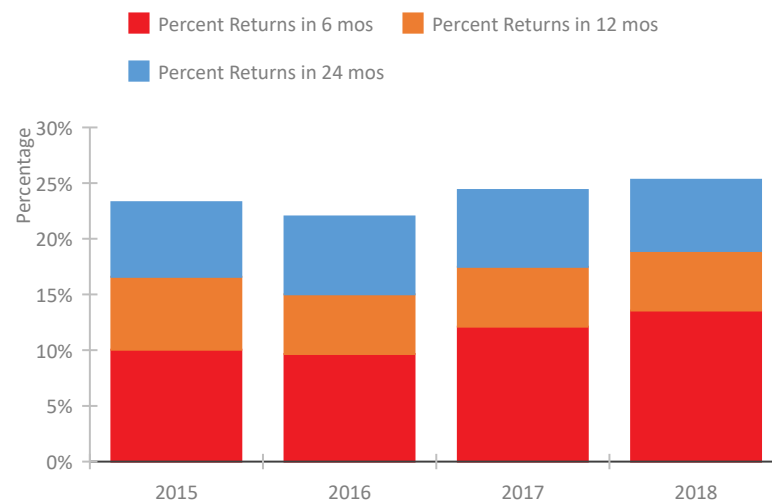


Wisconsin Continuum of Care Performance Profile

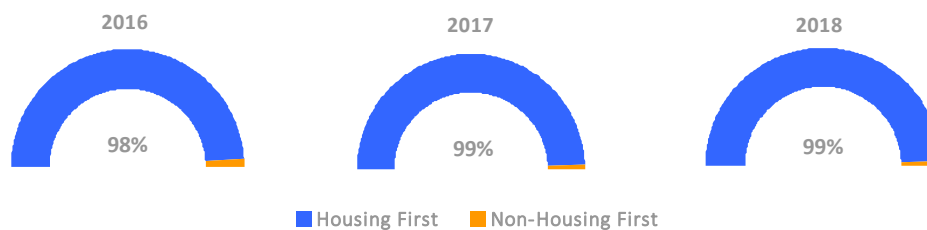
Exits to Permanent Housing by Program Type



Returns to Homelessness Over Time



Proportion of Housing First Projects by Year



Number of Projects by Year

	2016	2017	2018
Housing First Projects	90	86	89
Non-Housing First Projects	2	1	1

Data Summary: Wisconsin

Point-In-Time Count Summary

	2014	2015	2016	2017	2018	2017-18 Change	% Change
Number of Sheltered Persons in Families	3,036	2,968	2,780	2,370	2,142	-228	-10%
Number of Unsheltered Persons in Families	90	97	19	12	25	13	108%
Number of Sheltered Individuals	2,661	2,619	2,475	2,292	2,362	70	3%
Number of Unsheltered Individuals	249	337	386	325	356	31	10%
Total Homeless Persons	6,036	6,021	5,660	4,999	4,885	-114	-2%
Number of Sheltered Families	977	923	856	739	651	-88	-12%
Number of Unsheltered Families	30	31	6	4	9	5	125%
Number of Total Families	1,007	954	862	743	660	-83	-11%
Sheltered Chronically Homeless Individuals	359	277	209	275	368	93	34%
Unsheltered Chronically Homeless Individuals	77	84	67	67	78	11	16%
Total Chronically Homeless Individuals	436	361	276	342	446	104	30%
Sheltered Veterans	496	515	392	309	321	12	4%
Unsheltered Veterans	24	19	23	20	11	-9	-45%
Total Veterans	520	534	415	329	332	3	1%
Sheltered Unaccompanied Youth (up to 24)	--	287	273	240	215	-25	-10%
Unsheltered Unaccompanied Youth (up to 24)	--	47	64	36	31	-5	-14%
Total Unaccompanied Youth (up to 24)	--	334	337	276	246	-30	-11%

System Performance Measures Summary

	2014	2015	2016	2017	2018	2017-18 Change	% Change
Rate People Return to Homelessness in 6 Months	N/A	10.0%	9.7%	12.1%	13.6%	1.4%	N/A
Number of People who are Homeless for the First Time	N/A	16,349	15,511	14,483	14,529	46	0.3%
Rate People Exit from ES, SH, TH, and RRH to PH	N/A	46.8%	47.0%	48.5%	44.0%	-4.5%	N/A
Rate People in PSH and OPH Retain or Exit to PH	N/A	92.9%	94.7%	95.0%	96.0%	1%	N/A

Housing Inventory Count Summary

	2014	2015	2016	2017	2018	2017-18 Change	% Change
Emergency Shelter (ES)	3,436	3,656	3,614	3,422	3,190	-232	-7%
Safe Haven (SH)	64	64	64	91	68	-23	-25%
Transitional Housing (TH)	3,004	2,983	2,726	2,012	1,463	-549	-27%
Permanent Supportive Housing (PSH)	2,675	2,918	3,087	3,265	3,583	318	10%
Rapid Re-Housing (RRH)	405	497	883	1,367	1,598	231	17%
Other Permanent Housing (OPH)	--	95	271	460	629	169	37%

Award Summary

	2014	2015	2016	2017	2018	2017-18 Change	% Change
Continuum of Care (CoC)	\$22,621,452	\$23,589,890	\$23,586,361	\$23,750,589	\$25,556,871	\$1,806,282	8%
Emergency Solutions Grants (ESG)	\$4,688,823	\$5,094,965	\$5,085,219	\$6,014,008	\$5,073,804	(\$940,204)	-16%