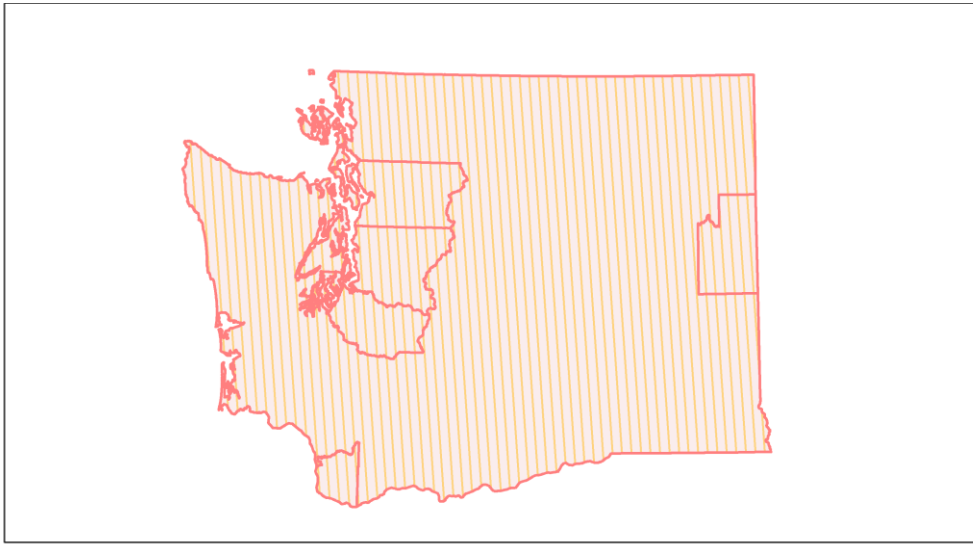
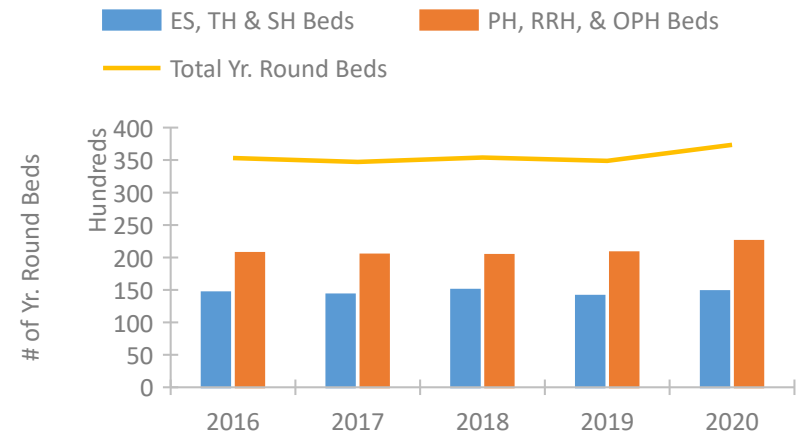


Washington Continuum of Care Performance Profile

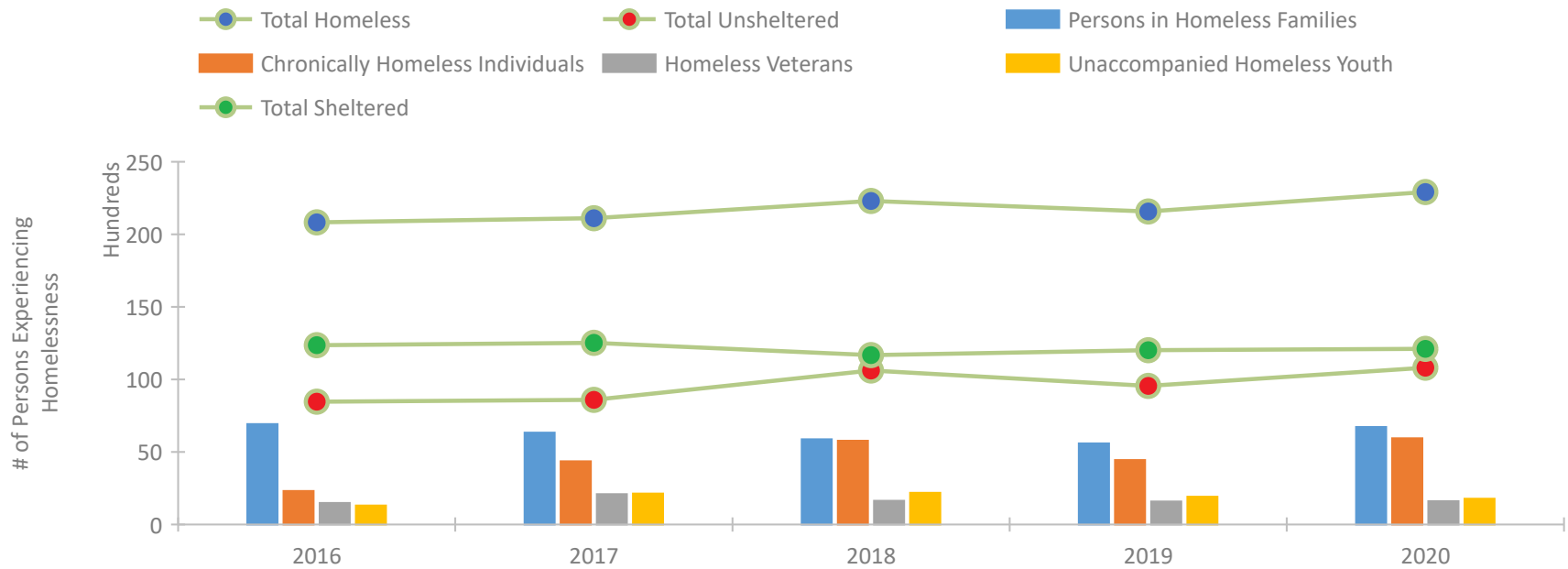


2020 CoC Boundaries 2019 CoC Boundaries

Housing Inventory Count by Program Type



Homeless Population – Point-in-Time (PIT) Count

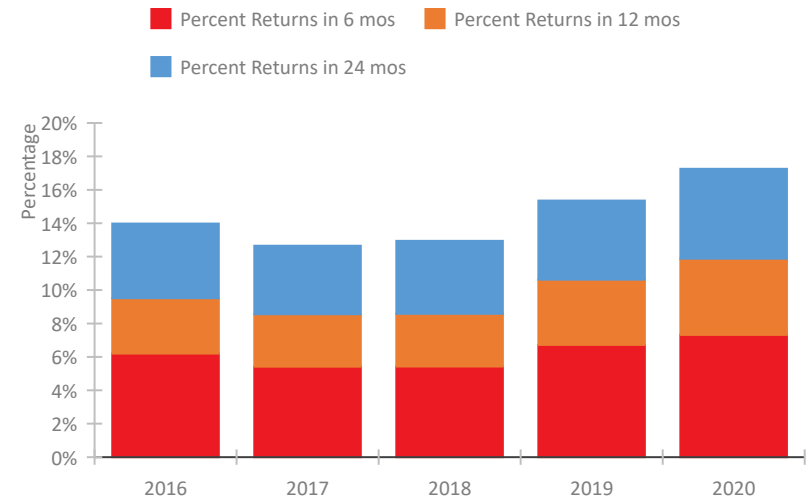


Washington Continuum of Care Performance Profile

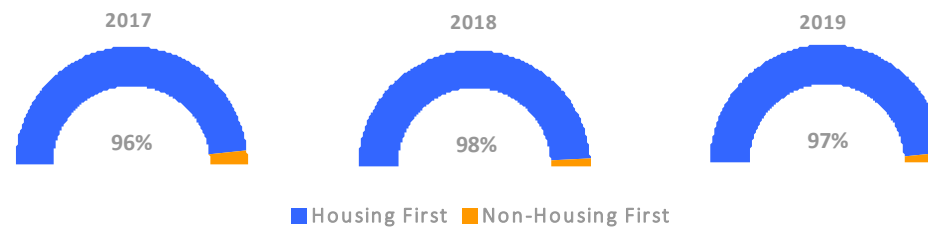
Exits to Permanent Housing by Program Type



Returns to Homelessness Over Time



Proportion of Housing First Projects by Year*



Number of Projects by Year

	2017	2018	2019
Housing First Projects	180	189	182
Non-Housing First Projects	7	4	5

*In 2020 HUD awarded renewal projects noncompetitively, therefore no new data was collected and Housing First data remains the same from 2019 to 2020.

Data Summary: Washington

Point-In-Time Count Summary

	2016	2017	2018	2019	2020	2019-20 Change	% Change
Number of Sheltered Persons in Families	5,972	5,788	5,164	4,925	4,841	-84	-2%
Number of Unsheltered Persons in Families	955	543	716	667	1,884	1,217	182%
Number of Sheltered Individuals	6,389	6,733	6,519	7,095	7,268	173	2%
Number of Unsheltered Individuals	7,511	8,048	9,905	8,890	8,930	40	0%
Total Homeless Persons	20,827	21,112	22,304	21,577	22,923	1,346	6%
Number of Sheltered Families	1,878	1,823	1,583	1,550	1,548	-2	-0%
Number of Unsheltered Families	307	170	217	201	568	367	183%
Number of Total Families	2,185	1,993	1,800	1,751	2,116	365	21%
Sheltered Chronically Homeless Individuals	825	1,290	1,619	1,797	2,077	280	16%
Unsheltered Chronically Homeless Individuals	1,482	3,067	4,156	2,649	3,866	1,217	46%
Total Chronically Homeless Individuals	2,307	4,357	5,775	4,446	5,943	1,497	34%
Sheltered Veterans	999	1,094	770	818	866	48	6%
Unsheltered Veterans	485	999	866	767	741	-26	-3%
Total Veterans	1,484	2,093	1,636	1,585	1,607	22	1%
Sheltered Unaccompanied Youth (up to 24)	714	733	763	824	805	-19	-2%
Unsheltered Unaccompanied Youth (up to 24)	593	1,402	1,421	1,087	972	-115	-11%
Total Unaccompanied Youth (up to 24)	1,307	2,135	2,184	1,911	1,777	-134	-7%

System Performance Measures Summary

	2016	2017	2018	2019	2020	2019-20 Change	% Change
Rate People Return to Homelessness in 6 Months	6.2%	5.4%	5.4%	6.7%	7.3%	0.6%	N/A
Number of People who are Homeless for the First Time	38,236	36,557	37,457	36,800	25,084	-11,716	-31.8%
Rate People Exit from ES, SH, TH, and RRH to PH	41.9%	42.4%	41.9%	42.8%	38.8%	-4%	N/A
Rate People in PSH and OPH Retain or Exit to PH	92.7%	93.4%	94.2%	94.9%	95.8%	1%	N/A

Housing Inventory Count Summary

	2016	2017	2018	2019	2020	2019-20 Change	% Change
Emergency Shelter (ES)	7,787	8,428	9,492	9,622	10,213	591	6%
Safe Haven (SH)	45	45	50	45	84	39	87%
Transitional Housing (TH)	6,795	5,815	5,474	4,415	4,520	105	2%
Permanent Supportive Housing (PSH)	10,383	11,504	11,899	11,454	12,204	750	7%
Rapid Re-Housing (RRH)	7,424	5,906	4,942	5,111	5,661	550	11%
Other Permanent Housing (OPH)	2,841	3,026	3,535	4,241	4,669	428	10%

Award Summary

	2016	2017	2018	2019	2020	2019-20 Change	% Change
Continuum of Care (CoC)	\$58,134,240	\$59,556,796	\$67,473,372	\$76,379,500	\$84,416,184	\$8,036,684	11%
Emergency Solutions Grants (ESG)	\$4,568,742	\$4,619,381	\$4,638,077	\$4,805,868	\$4,963,794	\$157,926	3%
Youth Homelessness Demonstration Program (YHDP)	\$5,422,244	\$7,016,984	--	\$2,697,636	--	--	--