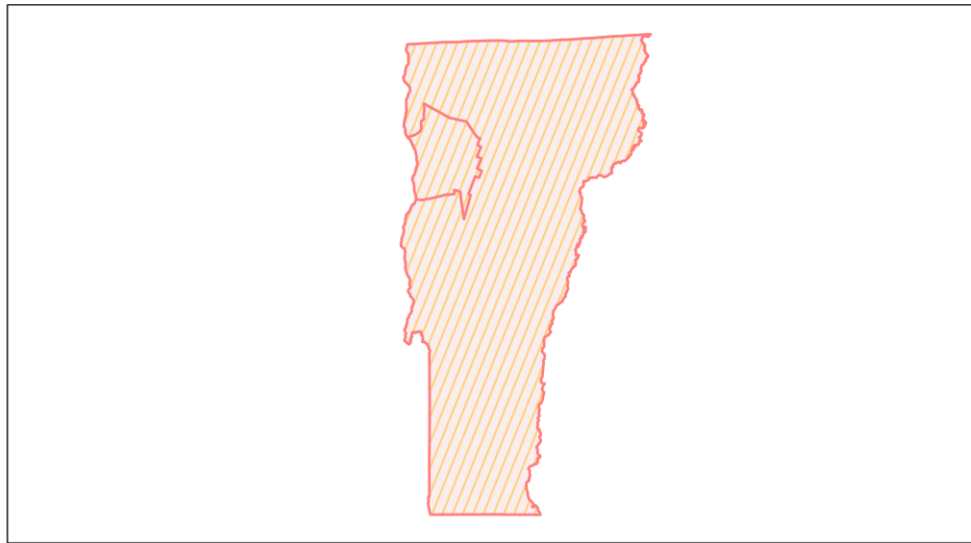
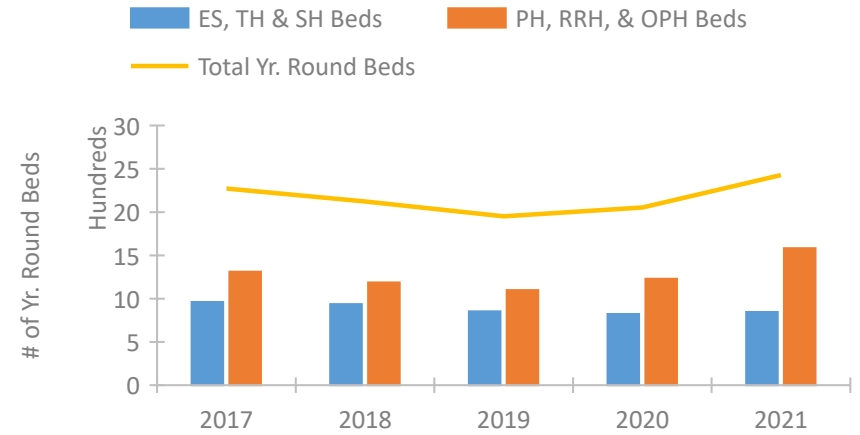


Vermont Continuum of Care Performance Profile

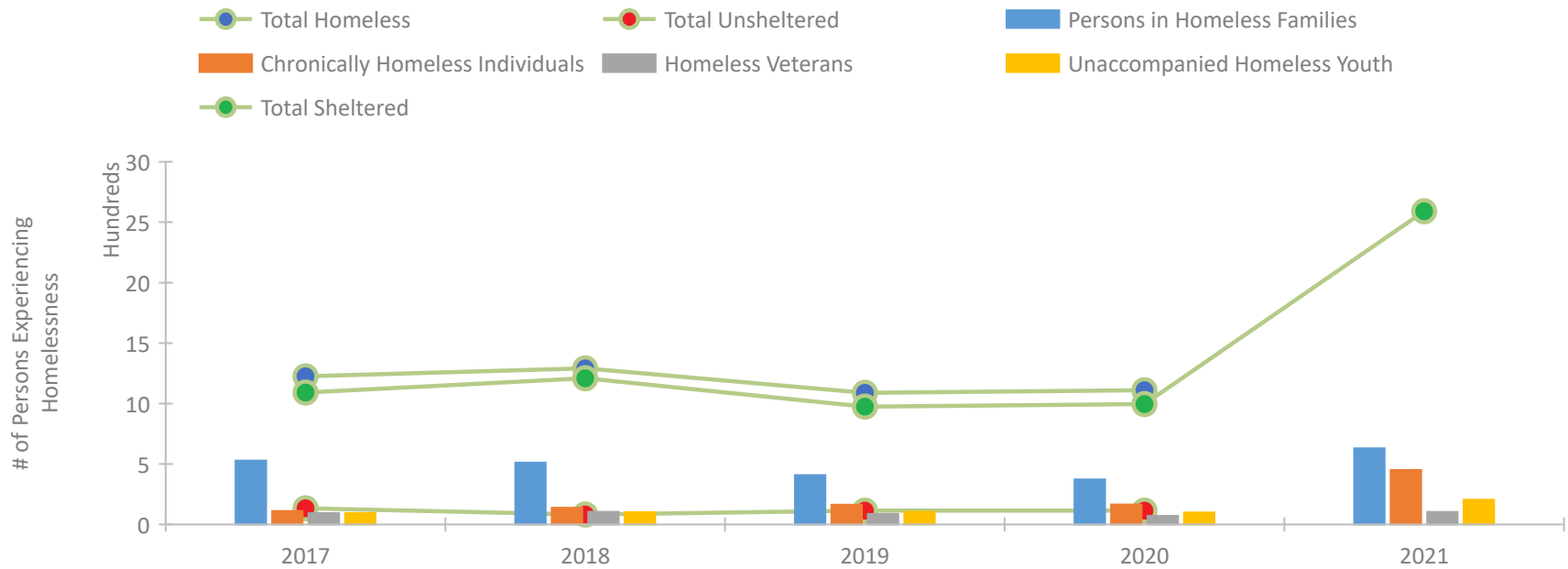


2021 CoC Boundaries 2020 CoC Boundaries

Housing Inventory Count by Program Type



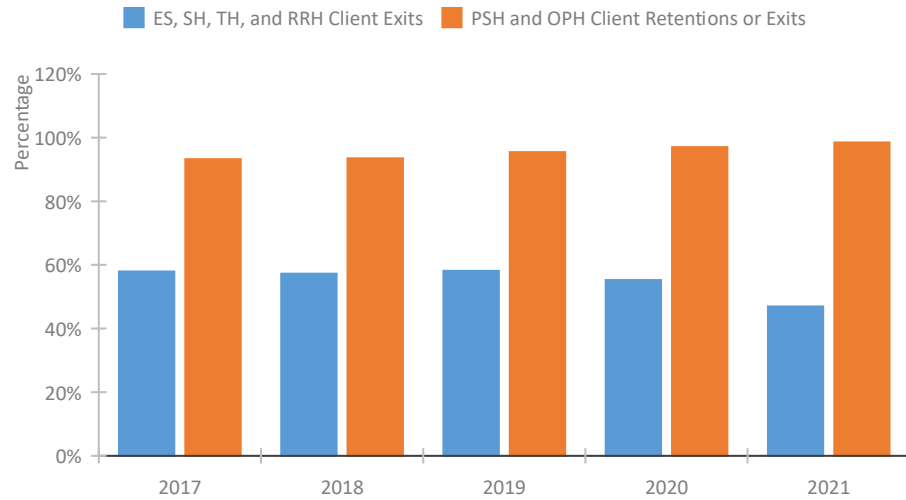
Homeless Population – Point-in-Time (PIT) Count*



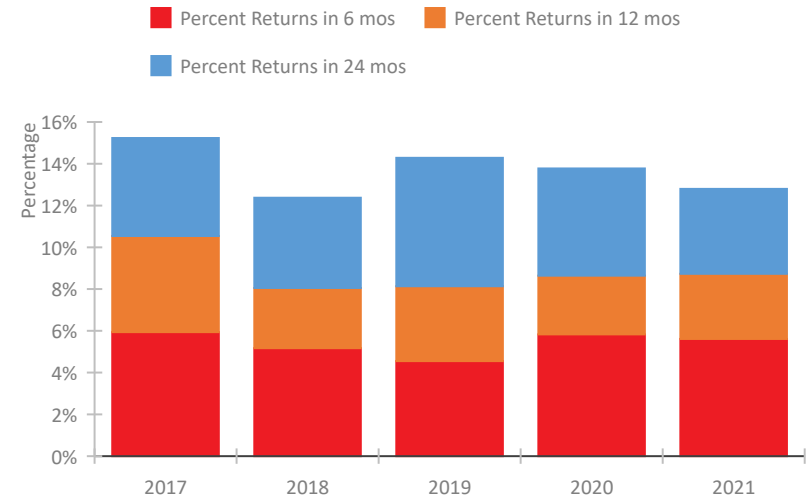
*In 2021, HUD gave communities the option to cancel or modify the unsheltered survey portion of their counts based on the potential risk of COVID-19 transmission associated with conducting an in-person survey. As a result, HUD has excluded the unsheltered population sub-totals and all unsheltered sub-population data for this reporting period. The user is cautioned that the unsheltered and total homeless counts reported here may be missing data.

Vermont Continuum of Care Performance Profile

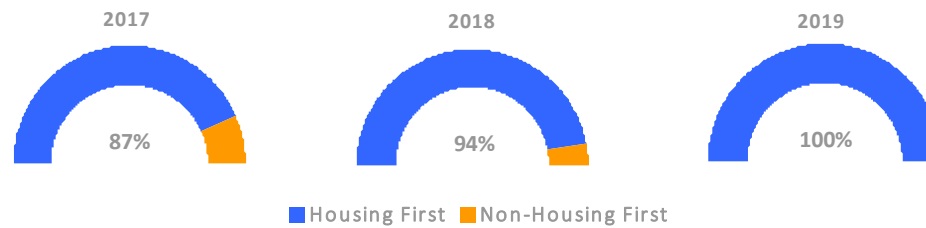
Exits to Permanent Housing by Program Type



Returns to Homelessness Over Time



Proportion of Housing First Projects by Year†



Number of Projects by Year

	2017	2018	2019
Housing First Projects	13	15	18
Non-Housing First Projects	2	1	0

†2021 Data unavailable at the time of report publication. In 2020 HUD awarded renewal projects noncompetitively, therefore no new data was collected and Housing First data remains the same from 2019 to 2020.

Data Summary: Vermont

Point-In-Time Count Summary*

	2017	2018	2019	2020	2021	2020-21 Change	% Change
Number of Sheltered Persons in Families	491	498	406	365	629	264	72%
Number of Unsheltered Persons in Families	37	13	2	7	0	-7	-100%
Number of Sheltered Individuals	600	711	569	631	1,962	1,331	211%
Number of Unsheltered Individuals	97	69	112	107	--	--	--
Total Homeless Persons	1,225	1,291	1,089	1,110	2,591	1,481	133%
Number of Sheltered Families	170	165	127	122	209	87	71%
Number of Unsheltered Families	9	4	1	2	--	--	--
Number of Total Families	179	169	128	124	209	85	69%
Sheltered Chronically Homeless Individuals	82	120	132	132	450	318	241%
Unsheltered Chronically Homeless Individuals	29	18	31	33	--	--	--
Total Chronically Homeless Individuals	111	138	163	165	450	285	173%
Sheltered Veterans	89	96	78	67	103	36	54%
Unsheltered Veterans	5	8	9	4	--	--	--
Total Veterans	94	104	87	71	103	32	45%
Sheltered Unaccompanied Youth (up to 24)	83	93	94	85	204	119	140%
Unsheltered Unaccompanied Youth (up to 24)	11	8	11	14	--	--	--
Total Unaccompanied Youth (up to 24)	94	101	105	99	204	105	106%

System Performance Measures Summary

	2017	2018	2019	2020	2021	2020-21 Change	% Change
Rate People Return to Homelessness in 6 Months	5.9%	5.2%	4.6%	5.8%	5.6%	-0.2%	N/A
Number of People who are Homeless for the First Time	2,795	2,665	2,732	2,011	2,390	379	18.8%
Rate People Exit from ES, SH, TH, and RRH to PH	57.9%	57.2%	58.1%	55.2%	46.9%	-8.3%	N/A
Rate People in PSH and OPH Retain or Exit to PH	93.2%	93.5%	95.4%	97.0%	98.5%	1.4%	N/A

Housing Inventory Count Summary

	2017	2018	2019	2020	2021	2020-21 Change	% Change
Emergency Shelter (ES)	649	675	630	621	653	32	5%
Transitional Housing (TH)	308	262	223	202	192	-10	-5%
Permanent Supportive Housing (PSH)	609	576	554	550	471	-79	-14%
Rapid Re-Housing (RRH)	703	588	465	576	981	405	70%
Other Permanent Housing (OPH)	--	22	79	104	131	27	26%

Award Summary

	2017	2018	2019	2020	2021	2020-21 Change	% Change
Continuum of Care (CoC)	\$4,632,864	\$4,793,421	\$4,892,598	\$5,996,609	\$6,059,738	\$63,129	1%
Emergency Solutions Grants (ESG)	\$635,751	\$628,663	\$650,838	\$677,036	\$682,605	\$5,569	1%
Youth Homelessness Demonstration Program (YHDP)	\$2,002,131	--	--	--	--	--	--

*In 2021, HUD gave communities the option to cancel or modify the unsheltered survey portion of their counts based on the potential risk of COVID-19 transmission associated with conducting an in-person survey. As a result, HUD has excluded the unsheltered population sub-totals and all unsheltered sub-population data for this reporting period. The user is cautioned that the unsheltered and total homeless counts reported here may be missing data.