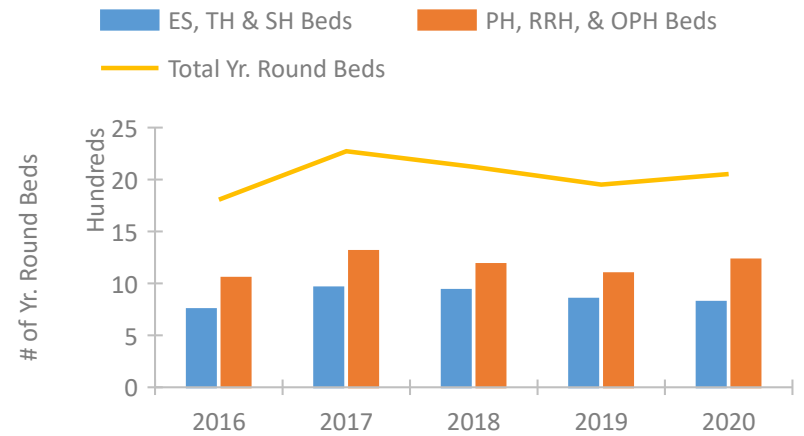


Vermont Continuum of Care Performance Profile

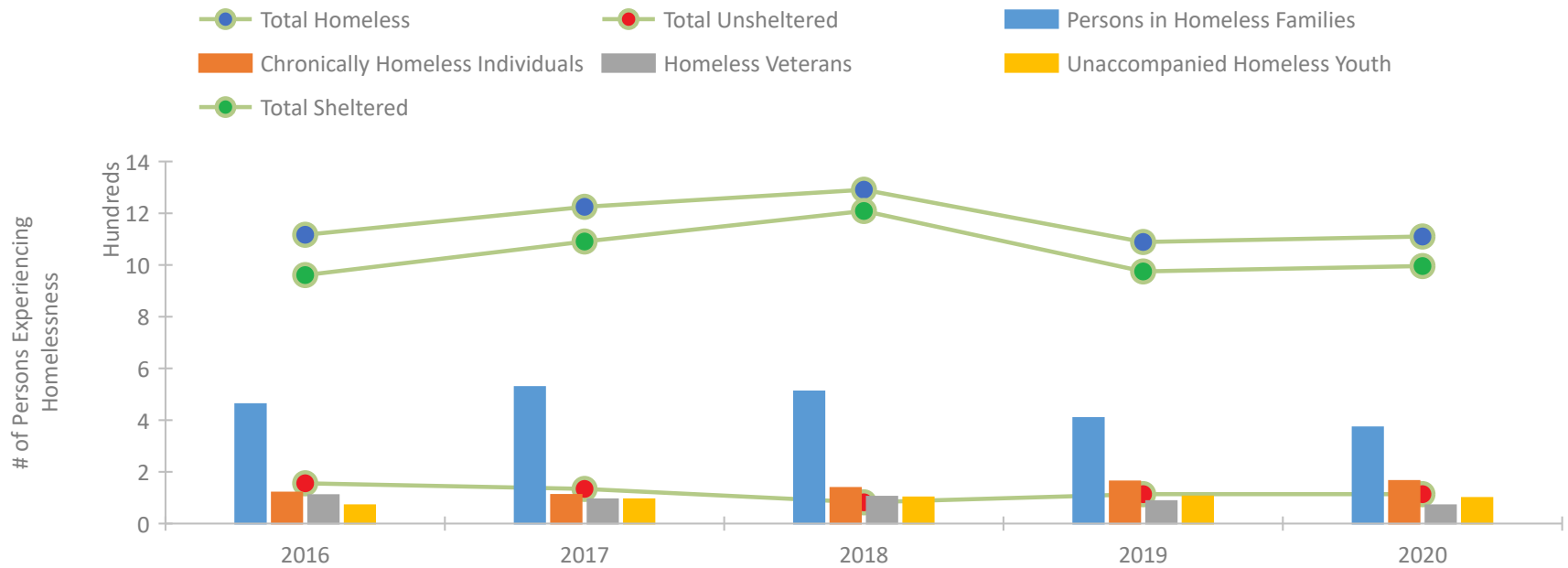


2020 CoC Boundaries 2019 CoC Boundaries

Housing Inventory Count by Program Type



Homeless Population – Point-in-Time (PIT) Count

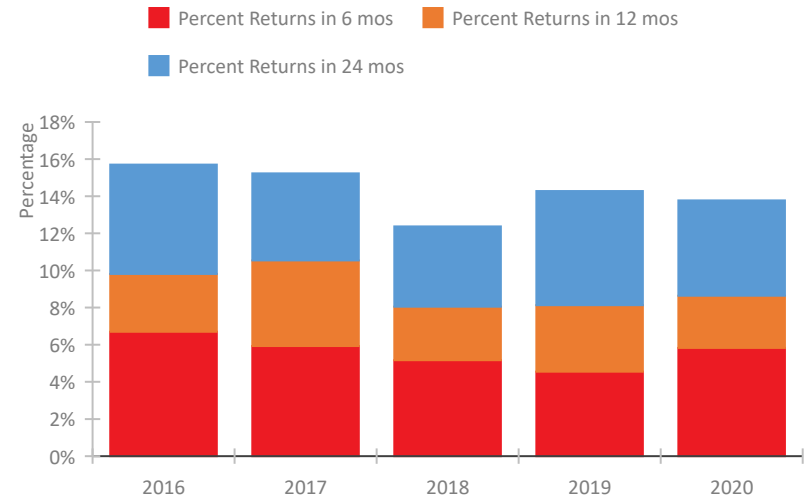


Vermont Continuum of Care Performance Profile

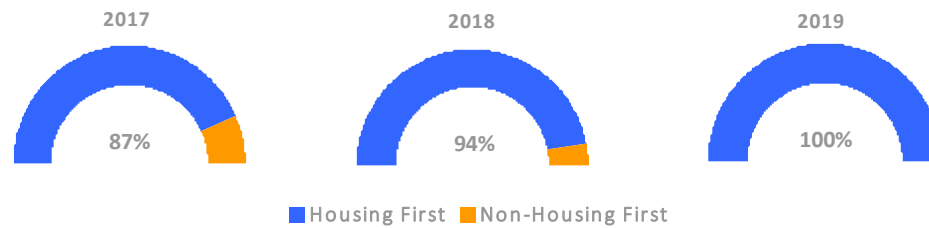
Exits to Permanent Housing by Program Type



Returns to Homelessness Over Time



Proportion of Housing First Projects by Year*



Number of Projects by Year			
	2017	2018	2019
Housing First Projects	13	15	18
Non-Housing First Projects	2	1	0

*In 2020 HUD awarded renewal projects noncompetitively, therefore no new data was collected and Housing First data remains the same from 2019 to 2020.

Data Summary: Vermont

Point-In-Time Count Summary

	2016	2017	2018	2019	2020	2019-20 Change	% Change
Number of Sheltered Persons in Families	445	491	498	406	365	-41	-10%
Number of Unsheltered Persons in Families	17	37	13	2	7	5	250%
Number of Sheltered Individuals	516	600	711	569	631	62	11%
Number of Unsheltered Individuals	139	97	69	112	107	-5	-4%
Total Homeless Persons	1,117	1,225	1,291	1,089	1,110	21	2%
Number of Sheltered Families	152	170	165	127	122	-5	-4%
Number of Unsheltered Families	6	9	4	1	2	1	100%
Number of Total Families	158	179	169	128	124	-4	-3%
Sheltered Chronically Homeless Individuals	74	82	120	132	132	0	-0%
Unsheltered Chronically Homeless Individuals	46	29	18	31	33	2	6%
Total Chronically Homeless Individuals	120	111	138	163	165	2	1%
Sheltered Veterans	97	89	96	78	67	-11	-14%
Unsheltered Veterans	13	5	8	9	4	-5	-56%
Total Veterans	110	94	104	87	71	-16	-18%
Sheltered Unaccompanied Youth (up to 24)	62	83	93	94	85	-9	-10%
Unsheltered Unaccompanied Youth (up to 24)	9	11	8	11	14	3	27%
Total Unaccompanied Youth (up to 24)	71	94	101	105	99	-6	-6%

System Performance Measures Summary

	2016	2017	2018	2019	2020	2019-20 Change	% Change
Rate People Return to Homelessness in 6 Months	6.7%	5.9%	5.2%	4.6%	5.8%	1.3%	N/A
Number of People who are Homeless for the First Time	2,824	2,795	2,665	2,732	2,011	-721	-26.4%
Rate People Exit from ES, SH, TH, and RRH to PH	61.6%	57.9%	57.2%	58.1%	55.2%	-2.9%	N/A
Rate People in PSH and OPH Retain or Exit to PH	94.2%	93.2%	93.5%	95.4%	97.0%	1.6%	N/A

Housing Inventory Count Summary

	2016	2017	2018	2019	2020	2019-20 Change	% Change
Emergency Shelter (ES)	424	649	675	630	621	-9	-1%
Transitional Housing (TH)	324	308	262	223	202	-21	-9%
Permanent Supportive Housing (PSH)	575	609	576	554	550	-4	-1%
Rapid Re-Housing (RRH)	465	703	588	465	576	111	24%
Other Permanent Housing (OPH)	14	--	22	79	104	25	32%

Award Summary

	2016	2017	2018	2019	2020	2019-20 Change	% Change
Continuum of Care (CoC)	\$4,478,212	\$4,632,864	\$4,793,421	\$4,892,598	\$5,996,609	\$1,104,011	23%
Emergency Solutions Grants (ESG)	\$636,450	\$635,751	\$628,663	\$650,838	\$677,036	\$26,198	4%
Youth Homelessness Demonstration Program (YHDP)	--	\$2,002,131	--	--	--	--	--