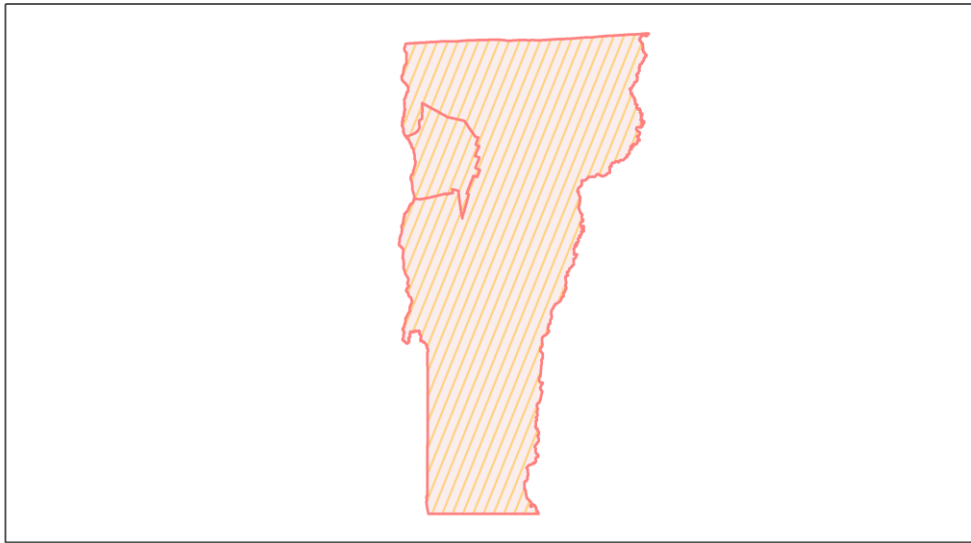
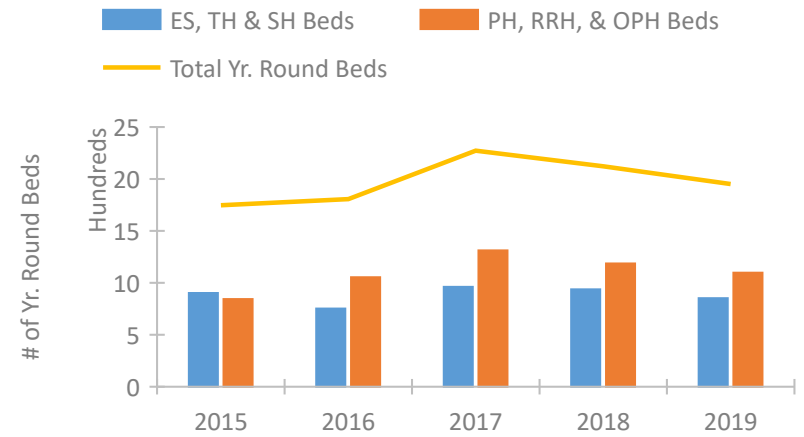


Vermont Continuum of Care Performance Profile

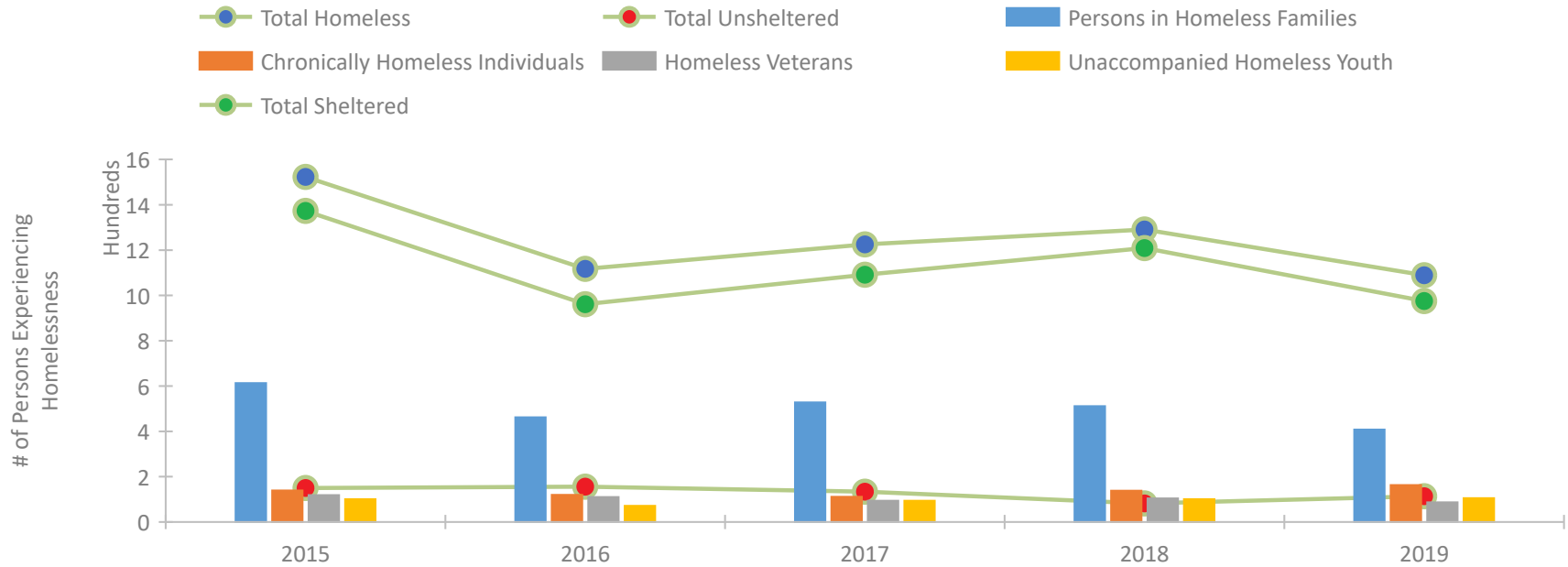


2019 CoC Boundaries 2018 CoC Boundaries

Housing Inventory Count by Program Type

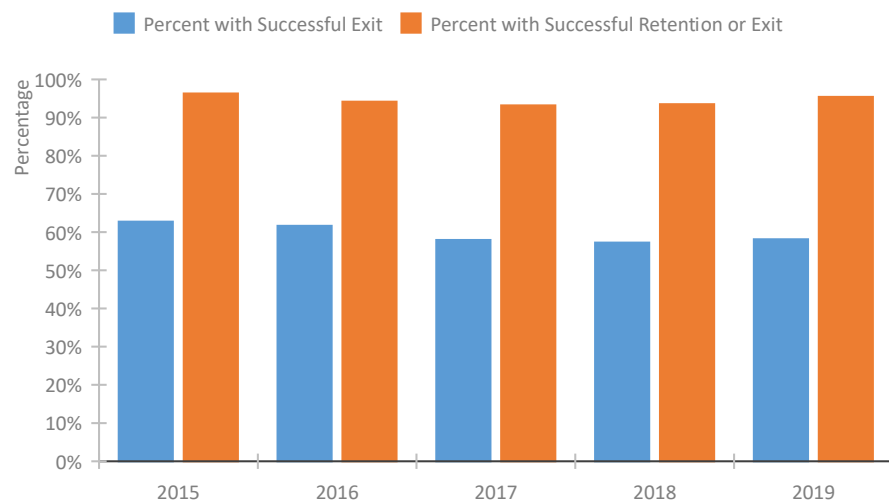


Homeless Population – Point-in-Time (PIT) Count

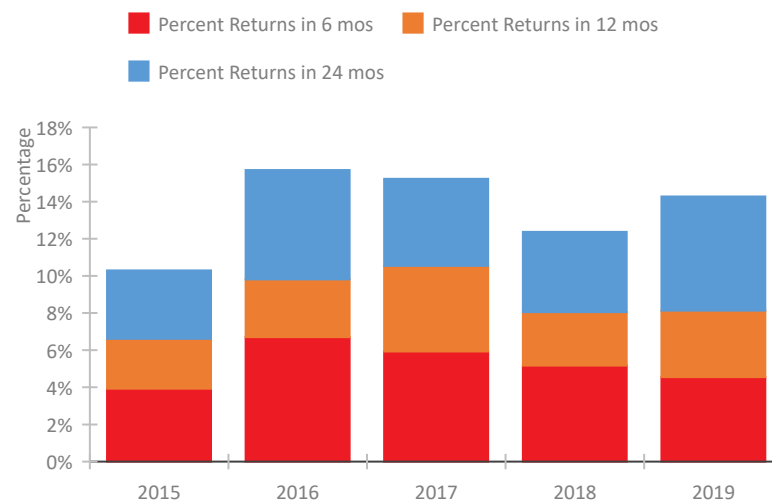


Vermont Continuum of Care Performance Profile

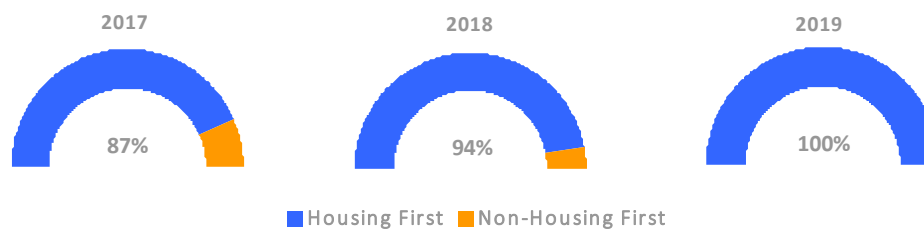
Exits to Permanent Housing by Program Type



Returns to Homelessness Over Time



Proportion of Housing First Projects by Year



Number of Projects by Year

	2017	2018	2019
Housing First Projects	13	15	18
Non-Housing First Projects	2	1	0

Data Summary: Vermont

Point-In-Time Count Summary

	2015	2016	2017	2018	2019	2018-19 Change	% Change
Number of Sheltered Persons in Families	598	445	491	498	406	-92	-18%
Number of Unsheltered Persons in Families	15	17	37	13	2	-11	-85%
Number of Sheltered Individuals	775	516	600	711	569	-142	-20%
Number of Unsheltered Individuals	135	139	97	69	112	43	62%
Total Homeless Persons	1,523	1,117	1,225	1,291	1,089	-202	-16%
Number of Sheltered Families	197	152	170	165	127	-38	-23%
Number of Unsheltered Families	4	6	9	4	1	-3	-75%
Number of Total Families	201	158	179	169	128	-41	-24%
Sheltered Chronically Homeless Individuals	84	74	82	120	132	12	10%
Unsheltered Chronically Homeless Individuals	55	46	29	18	31	13	72%
Total Chronically Homeless Individuals	139	120	111	138	163	25	18%
Sheltered Veterans	113	97	89	96	78	-18	-19%
Unsheltered Veterans	6	13	5	8	9	1	12%
Total Veterans	119	110	94	104	87	-17	-16%
Sheltered Unaccompanied Youth (up to 24)	87	62	83	93	94	1	1%
Unsheltered Unaccompanied Youth (up to 24)	14	9	11	8	11	3	38%
Total Unaccompanied Youth (up to 24)	101	71	94	101	105	4	4%

System Performance Measures Summary

	2015	2016	2017	2018	2019	2018-19 Change	% Change
Rate People Return to Homelessness in 6 Months	3.9%	6.7%	5.9%	5.2%	4.6%	-0.6%	N/A
Number of People who are Homeless for the First Time	1,759	2,824	2,795	2,665	2,732	67	2.5%
Rate People Exit from ES, SH, TH, and RRH to PH	62.7%	61.6%	57.9%	57.2%	58.1%	0.9%	N/A
Rate People in PSH and OPH Retain or Exit to PH	96.3%	94.2%	93.2%	93.5%	95.4%	1.9%	N/A

Housing Inventory Count Summary

	2015	2016	2017	2018	2019	2018-19 Change	% Change
Emergency Shelter (ES)	583	424	649	675	630	-45	-7%
Transitional Housing (TH)	316	324	308	262	223	-39	-15%
Permanent Supportive Housing (PSH)	529	575	609	576	554	-22	-4%
Rapid Re-Housing (RRH)	315	465	703	588	465	-123	-21%
Other Permanent Housing (OPH)	--	14	--	22	79	57	259%

Award Summary

	2015	2016	2017	2018	2019	2018-19 Change	% Change
Continuum of Care (CoC)	\$4,268,389	\$4,478,212	\$4,632,864	\$4,793,421	\$4,892,598	\$99,177	2%
Emergency Solutions Grants (ESG)	\$640,508	\$636,450	\$635,751	\$628,663	\$650,838	\$22,175	4%
Youth Homelessness Demonstration Program (YHDP)	N/A	--	\$2,002,131	--	--	--	--