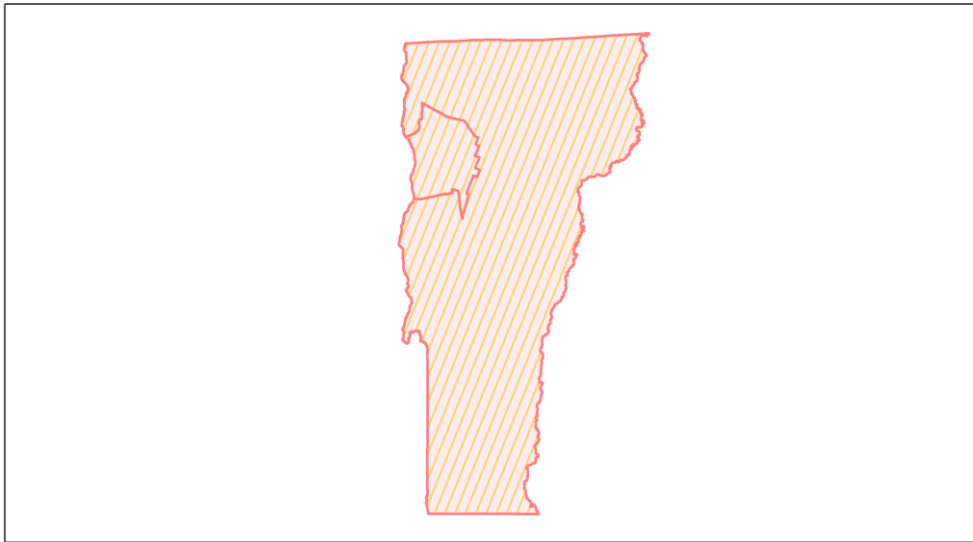
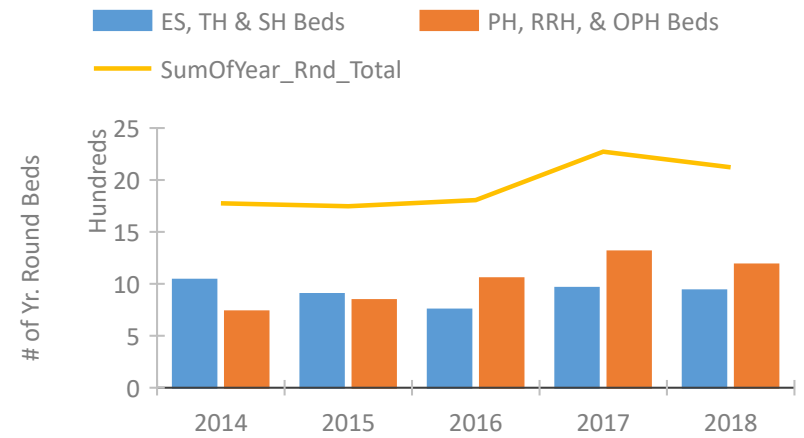


Vermont Continuum of Care Performance Profile

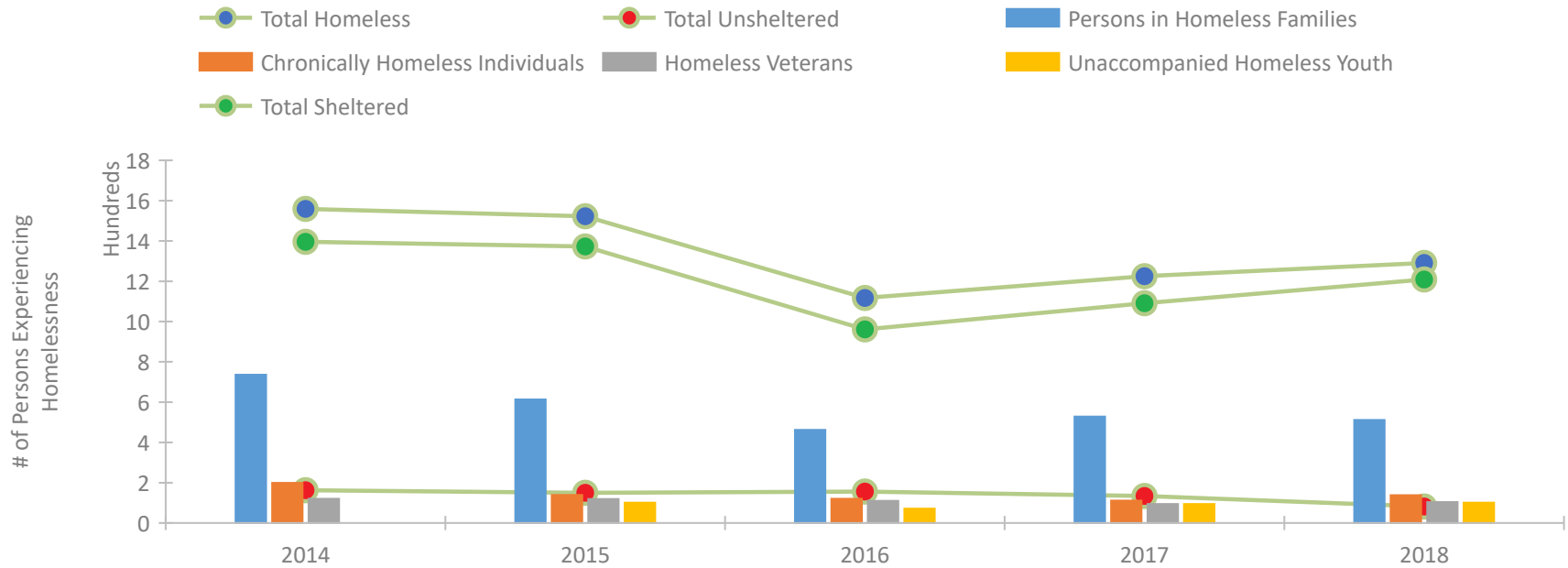


2018 CoC Boundaries 2017 CoC Boundaries

Housing Inventory Count by Program Type

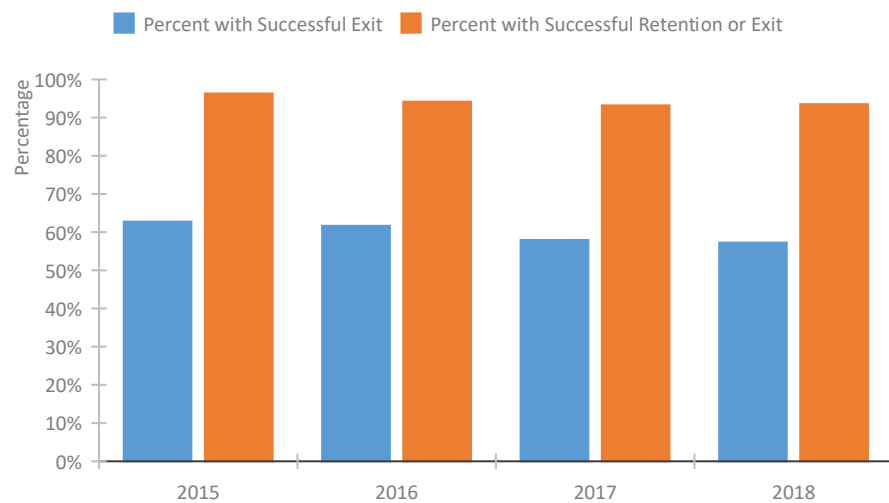


Homeless Population – Point-in-Time (PIT) Count

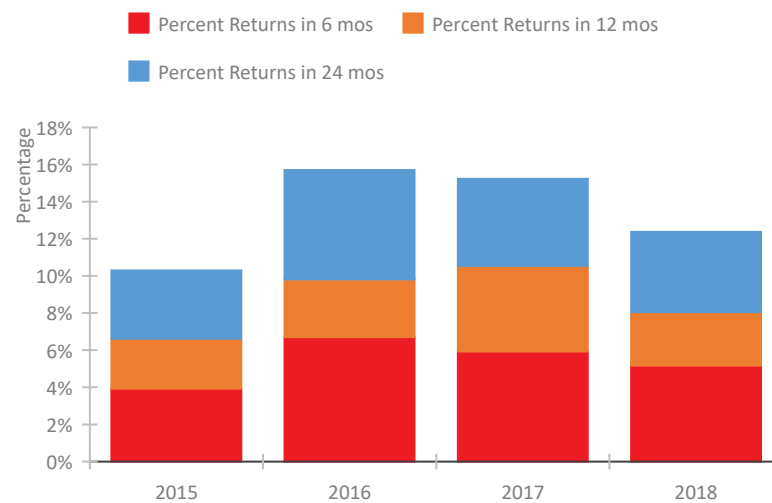


Vermont Continuum of Care Performance Profile

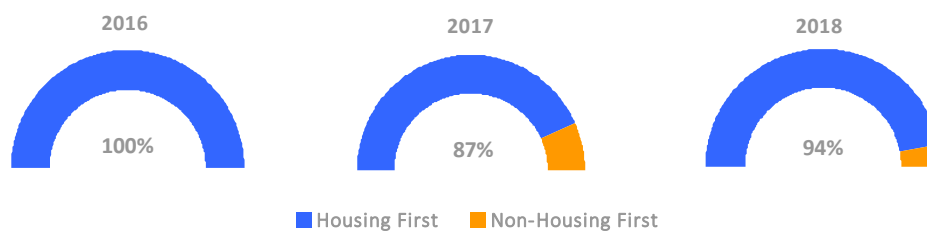
Exits to Permanent Housing by Program Type



Returns to Homelessness Over Time



Proportion of Housing First Projects by Year



Number of Projects by Year

	2016	2017	2018
Housing First Projects	17	13	15
Non-Housing First Projects	0	2	1

Data Summary: Vermont

Point-In-Time Count Summary

	2014	2015	2016	2017	2018	2017-18 Change	% Change
Number of Sheltered Persons in Families	692	598	445	491	498	7	1%
Number of Unsheltered Persons in Families	44	15	17	37	13	-24	-65%
Number of Sheltered Individuals	696	770	515	599	705	106	18%
Number of Unsheltered Individuals	118	134	139	96	69	-27	-28%
Total Homeless Persons	1,550	1,517	1,116	1,223	1,285	62	5%
Number of Sheltered Families	221	197	152	170	165	-5	-3%
Number of Unsheltered Families	18	4	6	9	4	-5	-56%
Number of Total Families	239	201	158	179	169	-10	-6%
Sheltered Chronically Homeless Individuals	159	84	74	82	120	38	46%
Unsheltered Chronically Homeless Individuals	40	55	46	29	18	-11	-38%
Total Chronically Homeless Individuals	199	139	120	111	138	27	24%
Sheltered Veterans	111	113	97	89	96	7	8%
Unsheltered Veterans	9	6	13	5	8	3	60%
Total Veterans	120	119	110	94	104	10	11%
Sheltered Unaccompanied Youth (up to 24)	--	87	62	83	93	10	12%
Unsheltered Unaccompanied Youth (up to 24)	--	14	9	11	8	-3	-27%
Total Unaccompanied Youth (up to 24)	--	101	71	94	101	7	7%

System Performance Measures Summary

	2014	2015	2016	2017	2018	2017-18 Change	% Change
Rate People Return to Homelessness in 6 Months	N/A	3.9%	6.7%	5.9%	5.2%	-0.8%	N/A
Number of People who are Homeless for the First Time	N/A	1,759	2,824	2,795	2,665	-130	-4.7%
Rate People Exit from ES, SH, TH, and RRH to PH	N/A	62.7%	61.6%	57.9%	57.2%	-0.7%	N/A
Rate People in PSH and OPH Retain or Exit to PH	N/A	96.3%	94.2%	93.2%	93.5%	0.3%	N/A

Housing Inventory Count Summary

	2014	2015	2016	2017	2018	2017-18 Change	% Change
Emergency Shelter (ES)	653	583	424	649	675	26	4%
Transitional Housing (TH)	381	316	324	308	262	-46	-15%
Permanent Supportive Housing (PSH)	598	529	575	609	576	-33	-5%
Rapid Re-Housing (RRH)	138	315	465	703	588	-115	-16%
Other Permanent Housing (OPH)	--	--	14	--	22	--	--

Award Summary

	2014	2015	2016	2017	2018	2017-18 Change	% Change
Continuum of Care (CoC)	\$3,731,788	\$4,268,389	\$4,478,212	\$4,632,864	\$4,793,421	\$160,557	3%
Emergency Solutions Grants (ESG)	\$589,905	\$640,508	\$636,450	\$635,751	\$628,663	(\$7,088)	-1%
Youth Homelessness Demonstration Program (YHDP)	N/A	N/A	--	\$2,002,131	--	--	--