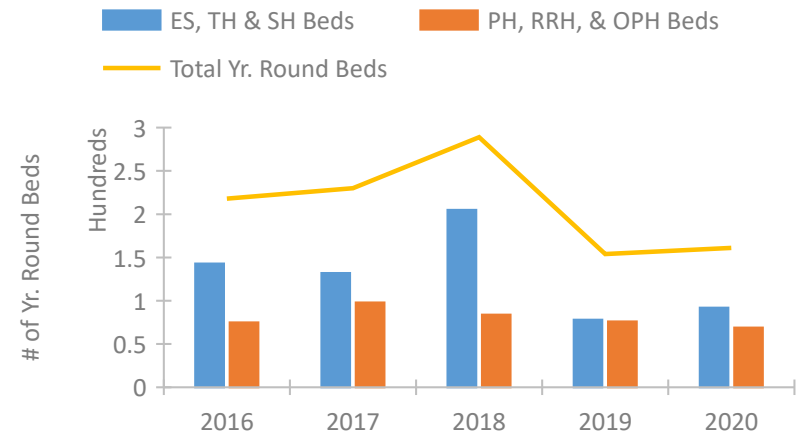


## Virgin Islands Continuum of Care Performance Profile

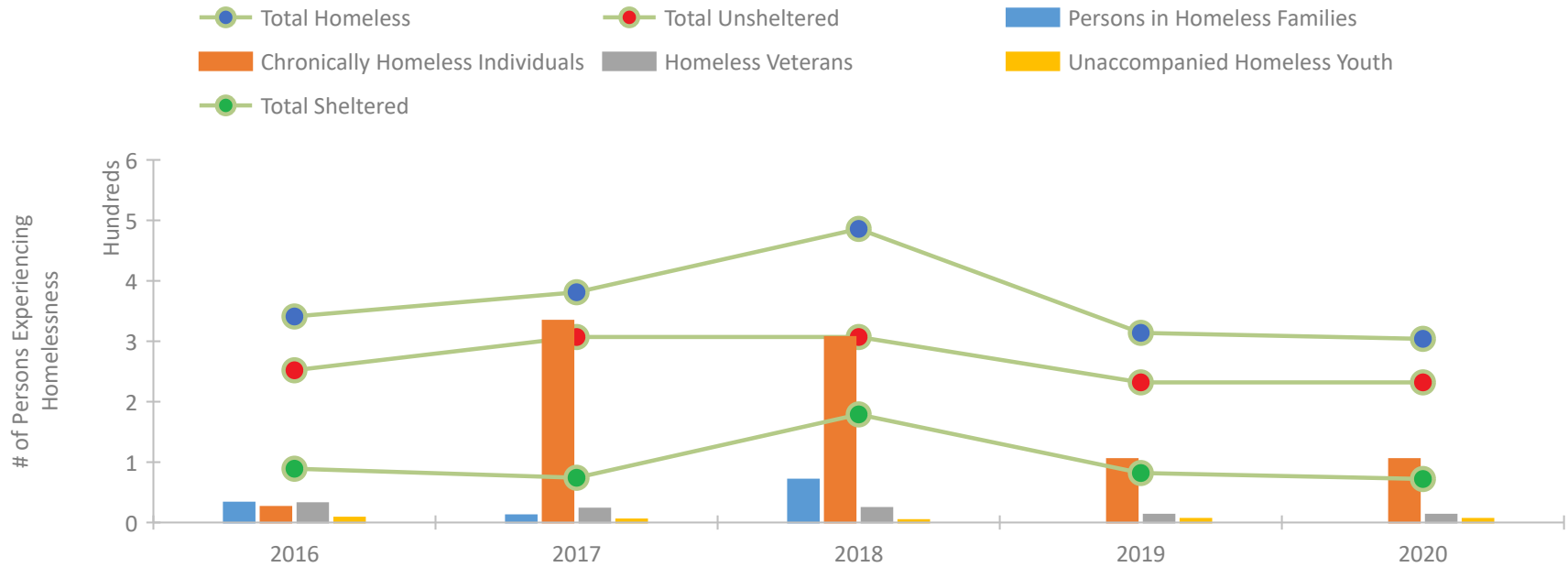


2020 CoC Boundaries 2019 CoC Boundaries

## Housing Inventory Count by Program Type

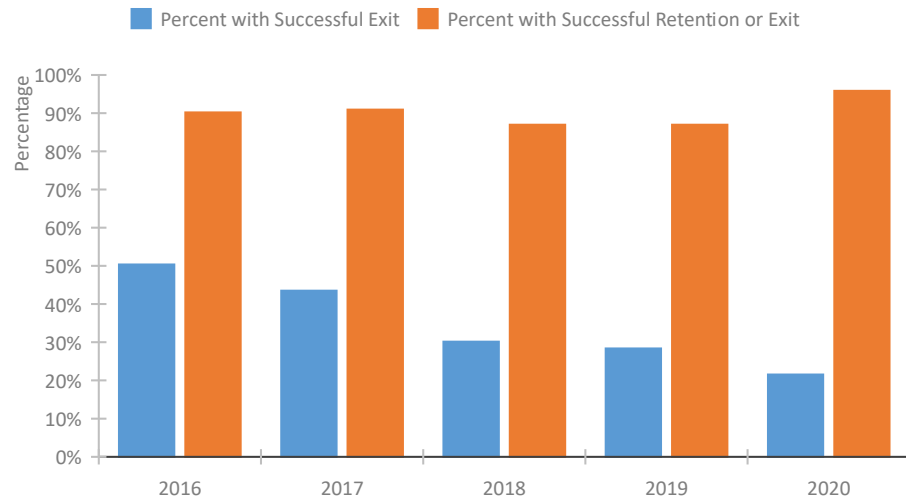


## Homeless Population – Point-in-Time (PIT) Count

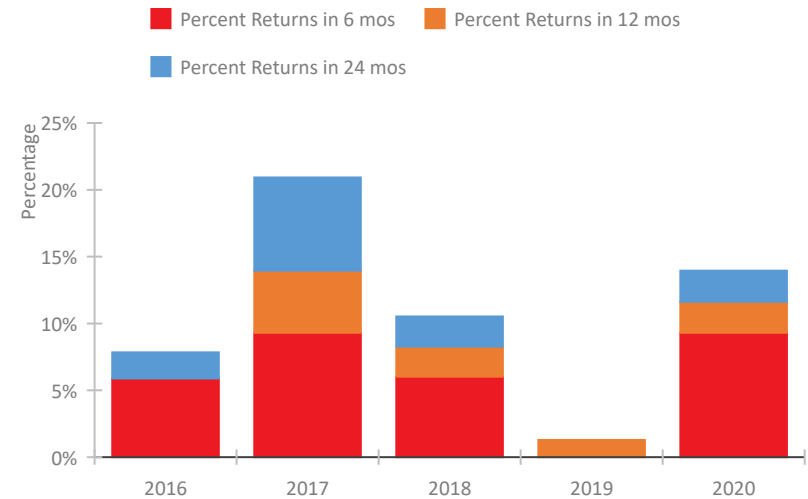


## Virgin Islands Continuum of Care Performance Profile

### Exits to Permanent Housing by Program Type



### Returns to Homelessness Over Time



### Proportion of Housing First Projects by Year\*

2017

2018

2019



■ Housing First ■ Non-Housing First

### Number of Projects by Year

	2017	2018	2019
Housing First Projects	--	2	1
Non-Housing First Projects	--	0	0

\*In 2020 HUD awarded renewal projects noncompetitively, therefore no new data was collected and Housing First data remains the same from 2019 to 2020.

## Data Summary: Virgin Islands

### Point-In-Time Count Summary

	2016	2017	2018	2019	2020	2019-20 Change	% Change
Number of Sheltered Persons in Families	33	12	71	0	0	0	--
Number of Unsheltered Persons in Families	0	0	0	0	0	0	--
Number of Sheltered Individuals	56	62	108	82	72	-10	-12%
Number of Unsheltered Individuals	252	307	307	232	232	0	-0%
<b>Total Homeless Persons</b>	<b>341</b>	<b>381</b>	<b>486</b>	<b>314</b>	<b>304</b>	<b>-10</b>	<b>-3%</b>
Number of Sheltered Families	11	3	26	0	0	0	--
Number of Unsheltered Families	0	0	0	0	0	0	--
<b>Number of Total Families</b>	<b>11</b>	<b>3</b>	<b>26</b>	<b>0</b>	<b>0</b>	<b>0</b>	<b>--</b>
Sheltered Chronically Homeless Individuals	8	27	0	0	0	0	--
Unsheltered Chronically Homeless Individuals	18	307	307	105	105	0	-0%
<b>Total Chronically Homeless Individuals</b>	<b>26</b>	<b>334</b>	<b>307</b>	<b>105</b>	<b>105</b>	<b>0</b>	<b>-0%</b>
Sheltered Veterans	2	6	7	0	0	0	--
Unsheltered Veterans	30	17	17	13	13	0	-0%
<b>Total Veterans</b>	<b>32</b>	<b>23</b>	<b>24</b>	<b>13</b>	<b>13</b>	<b>0</b>	<b>-0%</b>
Sheltered Unaccompanied Youth (up to 24)	0	3	2	0	0	0	--
Unsheltered Unaccompanied Youth (up to 24)	8	2	2	6	6	0	-0%
<b>Total Unaccompanied Youth (up to 24)</b>	<b>8</b>	<b>5</b>	<b>4</b>	<b>6</b>	<b>6</b>	<b>0</b>	<b>-0%</b>

### System Performance Measures Summary

	2016	2017	2018	2019	2020	2019-20 Change	% Change
Rate People Return to Homelessness in 6 Months	5.9%	9.3%	6.0%	0.0%	9.3%	9.3%	N/A
Number of People who are Homeless for the First Time	145	114	83	69	72	3	4.3%
Rate People Exit from ES, SH, TH, and RRH to PH	50.4%	43.5%	30.2%	28.4%	21.6%	-6.8%	N/A
Rate People in PSH and OPH Retain or Exit to PH	90.2%	90.9%	87.0%	87.0%	95.8%	8.9%	N/A

### Housing Inventory Count Summary

	2016	2017	2018	2019	2020	2019-20 Change	% Change
Emergency Shelter (ES)	92	83	154	34	34	0	-0%
Transitional Housing (TH)	51	49	51	44	58	14	32%
Permanent Supportive Housing (PSH)	68	69	73	64	45	-19	-30%
Rapid Re-Housing (RRH)	7	29	11	12	24	12	100%

### Award Summary

	2016	2017	2018	2019	2020	2019-20 Change	% Change
<b>Continuum of Care (CoC)</b>	\$107,651	\$135,371	\$192,882	\$197,155	\$206,369	\$9,214	5%
<b>Emergency Solutions Grants (ESG)</b>	\$151,552	\$150,331	\$148,903	\$158,751	\$164,332	\$5,581	4%