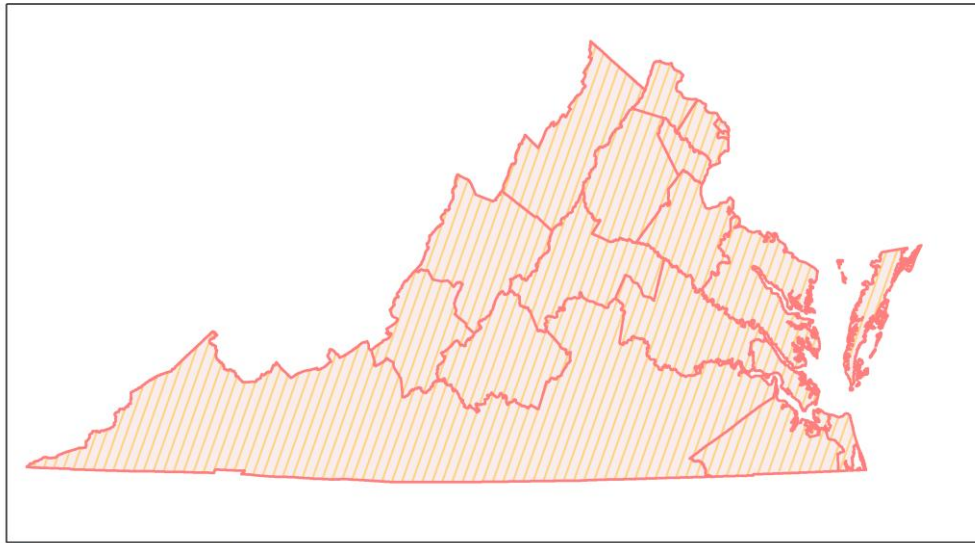
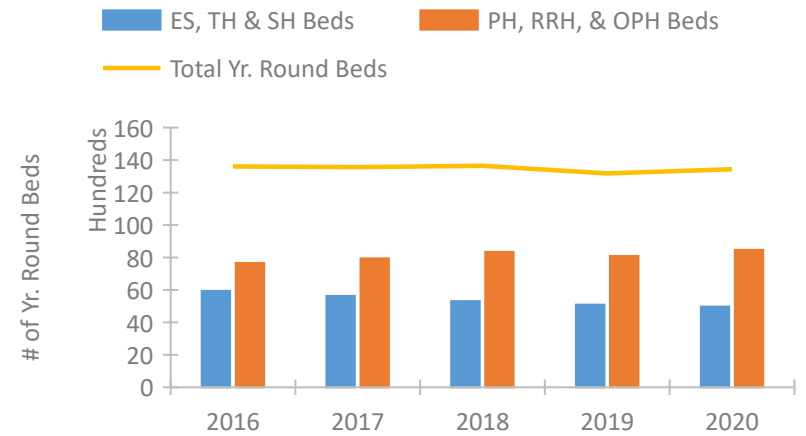


Virginia Continuum of Care Performance Profile

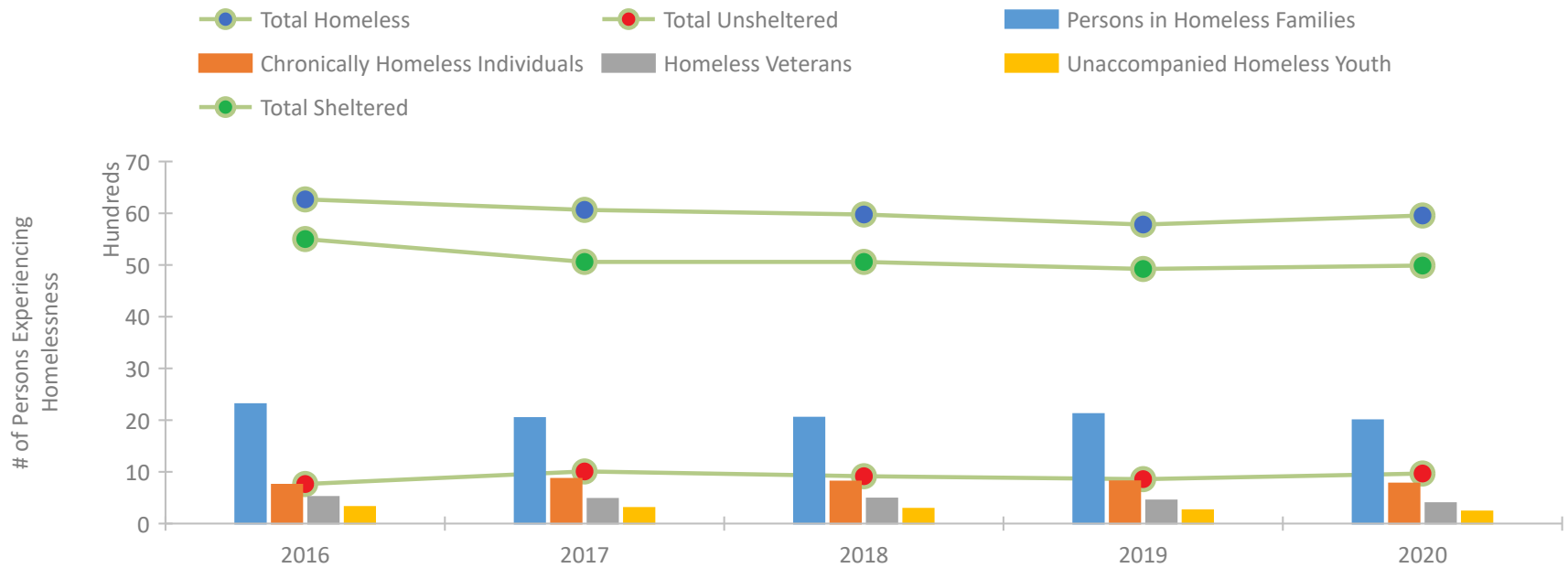


2020 CoC Boundaries
 2019 CoC Boundaries

Housing Inventory Count by Program Type

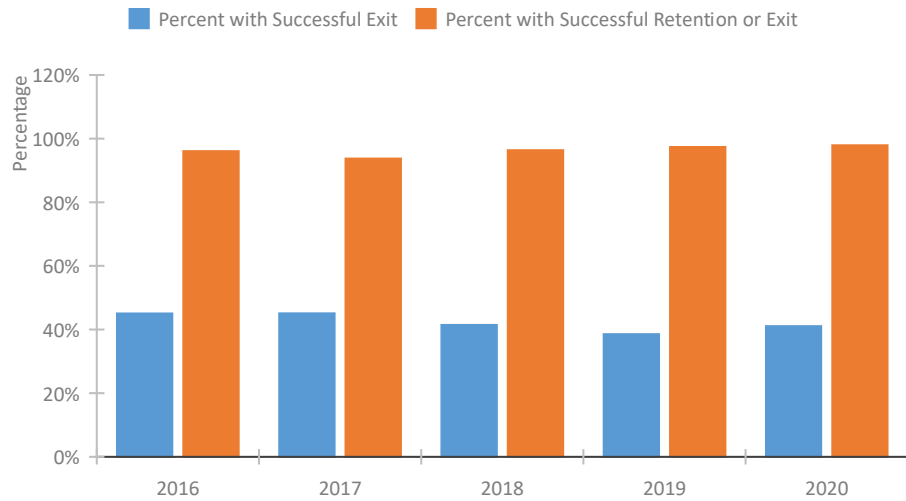


Homeless Population – Point-in-Time (PIT) Count

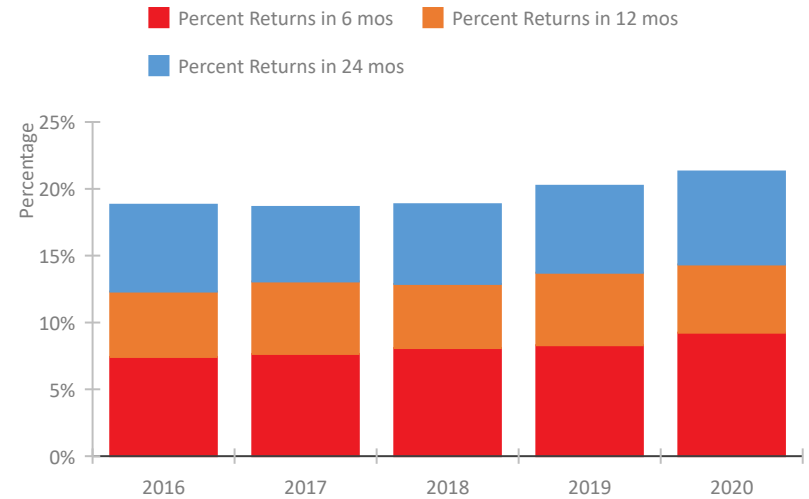


Virginia Continuum of Care Performance Profile

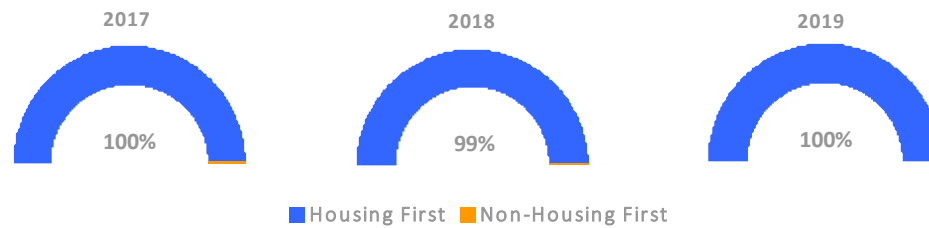
Exits to Permanent Housing by Program Type



Returns to Homelessness Over Time



Proportion of Housing First Projects by Year*



Number of Projects by Year			
	2017	2018	2019
Housing First Projects	226	147	144
Non-Housing First Projects	1	1	0

*In 2020 HUD awarded renewal projects noncompetitively, therefore no new data was collected and Housing First data remains the same from 2019 to 2020.

Data Summary: Virginia

Point-In-Time Count Summary

	2016	2017	2018	2019	2020	2019-20 Change	% Change
Number of Sheltered Persons in Families	2,257	2,010	1,994	2,086	1,970	-116	-6%
Number of Unsheltered Persons in Families	52	29	53	31	28	-3	-10%
Number of Sheltered Individuals	3,245	3,049	3,066	2,838	3,019	181	6%
Number of Unsheltered Individuals	714	979	862	828	940	112	14%
Total Homeless Persons	6,268	6,067	5,975	5,783	5,957	174	3%
Number of Sheltered Families	720	620	643	643	613	-30	-5%
Number of Unsheltered Families	17	11	17	9	8	-1	-11%
Number of Total Families	737	631	660	652	621	-31	-5%
Sheltered Chronically Homeless Individuals	525	501	537	580	537	-43	-7%
Unsheltered Chronically Homeless Individuals	225	363	275	237	238	1	0%
Total Chronically Homeless Individuals	750	864	812	817	775	-42	-5%
Sheltered Veterans	439	384	400	355	323	-32	-9%
Unsheltered Veterans	76	94	85	92	72	-20	-22%
Total Veterans	515	478	485	447	395	-52	-12%
Sheltered Unaccompanied Youth (up to 24)	278	247	237	204	200	-4	-2%
Unsheltered Unaccompanied Youth (up to 24)	44	56	49	54	34	-20	-37%
Total Unaccompanied Youth (up to 24)	322	303	286	258	234	-24	-9%

System Performance Measures Summary

	2016	2017	2018	2019	2020	2019-20 Change	% Change
Rate People Return to Homelessness in 6 Months	7.4%	7.6%	8.1%	8.3%	9.2%	0.9%	N/A
Number of People who are Homeless for the First Time	16,831	15,671	15,520	15,128	13,019	-2,109	-13.9%
Rate People Exit from ES, SH, TH, and RRH to PH	45.0%	45.1%	41.4%	38.5%	41.1%	2.5%	N/A
Rate People in PSH and OPH Retain or Exit to PH	96.0%	93.7%	96.3%	97.3%	97.9%	0.6%	N/A

Housing Inventory Count Summary

	2016	2017	2018	2019	2020	2019-20 Change	% Change
Emergency Shelter (ES)	4,013	4,109	4,184	4,041	4,041	0	-0%
Safe Haven (SH)	56	57	40	37	47	10	27%
Transitional Housing (TH)	1,873	1,462	1,079	1,014	885	-129	-13%
Permanent Supportive Housing (PSH)	4,314	4,188	4,375	4,637	4,660	23	0%
Rapid Re-Housing (RRH)	2,563	2,840	3,119	2,514	2,664	150	6%
Other Permanent Housing (OPH)	725	912	849	935	1,141	206	22%

Award Summary

	2016	2017	2018	2019	2020	2019-20 Change	% Change
Continuum of Care (CoC)	\$28,460,145	\$29,919,522	\$30,825,720	\$30,948,300	\$32,465,355	\$1,517,055	5%
Emergency Solutions Grants (ESG)	\$4,544,691	\$4,921,601	\$4,581,320	\$4,775,173	\$4,984,370	\$209,197	4%
Youth Homelessness Demonstration Program (YHDP)	--	--	--	\$1,603,744	--	--	--