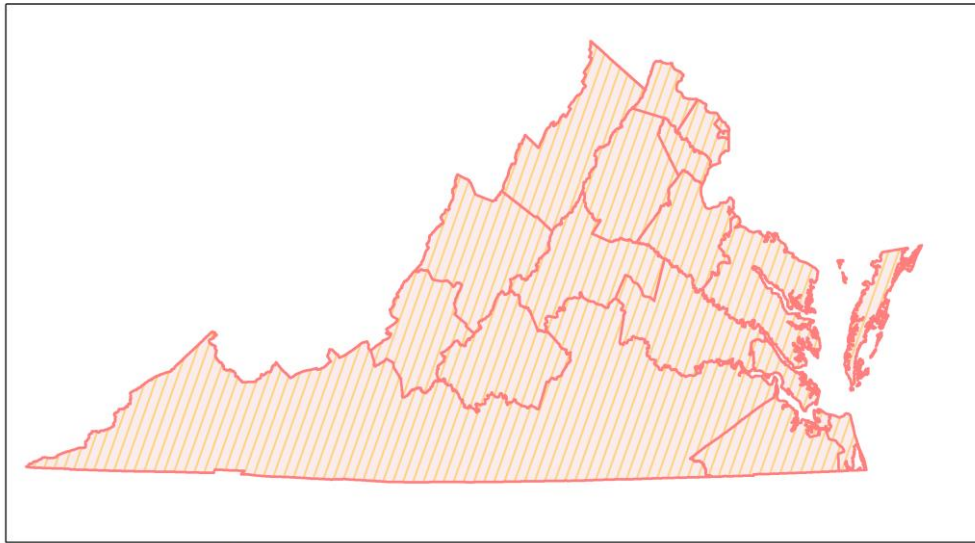
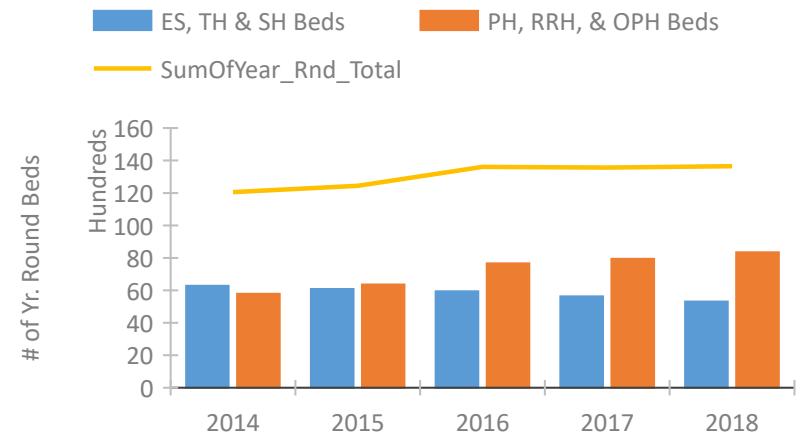


## Virginia Continuum of Care Performance Profile

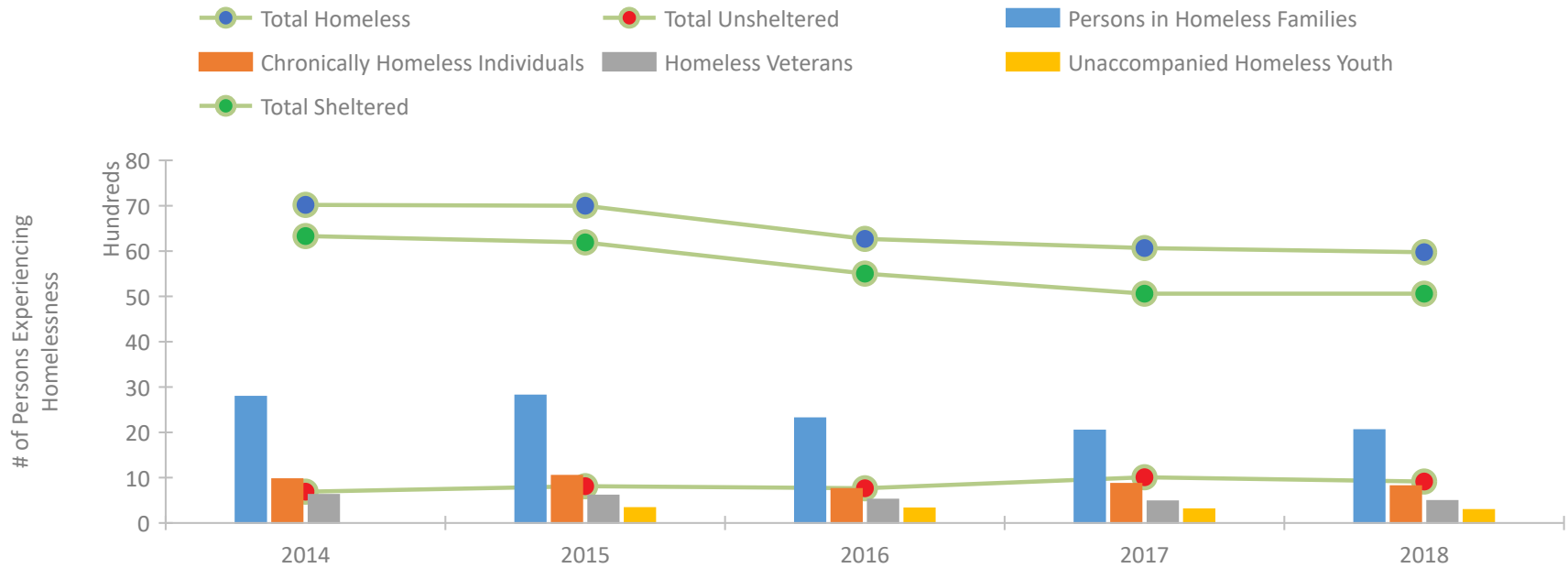


2018 CoC Boundaries 2017 CoC Boundaries

## Housing Inventory Count by Program Type

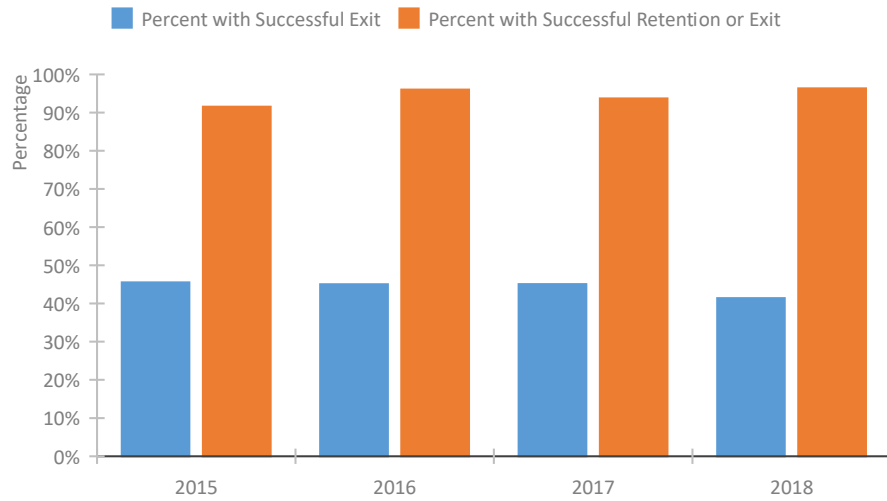


## Homeless Population – Point-in-Time (PIT) Count

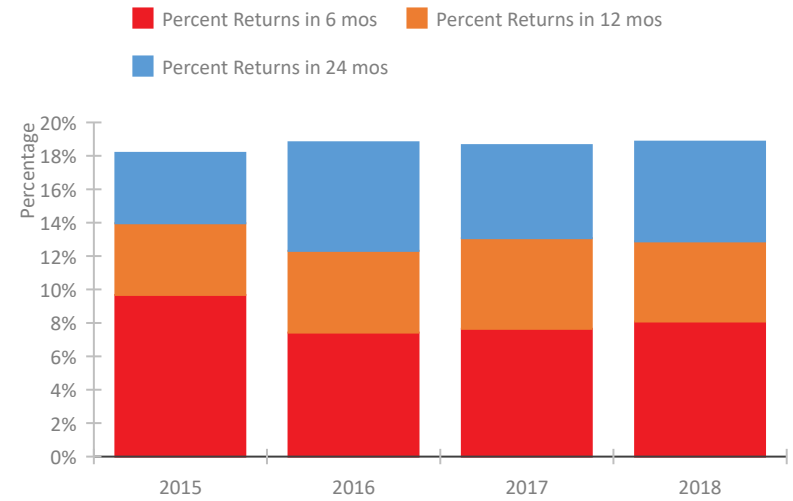


## Virginia Continuum of Care Performance Profile

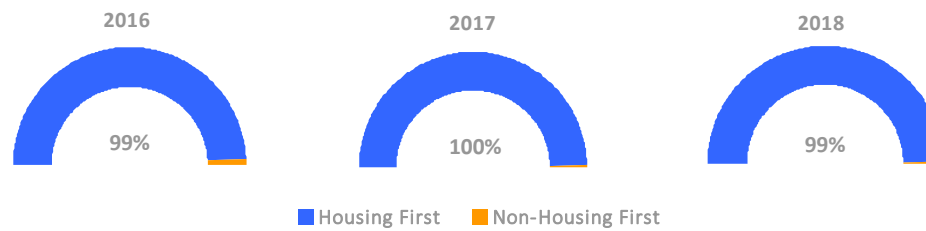
### Exits to Permanent Housing by Program Type



### Returns to Homelessness Over Time



### Proportion of Housing First Projects by Year



### Number of Projects by Year

	2016	2017	2018
Housing First Projects	133	226	147
Non-Housing First Projects	2	1	1

## Data Summary: Virginia

### Point-In-Time Count Summary

	2014	2015	2016	2017	2018	2017-18 Change	% Change
Number of Sheltered Persons in Families	2,760	2,756	2,257	2,010	1,994	-16	-1%
Number of Unsheltered Persons in Families	26	55	52	29	53	24	83%
Number of Sheltered Individuals	3,551	3,422	3,231	3,034	3,054	20	1%
Number of Unsheltered Individuals	664	756	714	979	862	-117	-12%
<b>Total Homeless Persons</b>	<b>7,001</b>	<b>6,989</b>	<b>6,254</b>	<b>6,052</b>	<b>5,963</b>	<b>-89</b>	<b>-1%</b>
Number of Sheltered Families	873	874	720	620	643	23	4%
Number of Unsheltered Families	10	16	17	11	17	6	55%
<b>Number of Total Families</b>	<b>883</b>	<b>890</b>	<b>737</b>	<b>631</b>	<b>660</b>	<b>29</b>	<b>5%</b>
Sheltered Chronically Homeless Individuals	674	702	525	501	537	36	7%
Unsheltered Chronically Homeless Individuals	291	339	225	363	275	-88	-24%
<b>Total Chronically Homeless Individuals</b>	<b>965</b>	<b>1,041</b>	<b>750</b>	<b>864</b>	<b>812</b>	<b>-52</b>	<b>-6%</b>
Sheltered Veterans	535	513	439	384	400	16	4%
Unsheltered Veterans	85	91	76	94	85	-9	-10%
<b>Total Veterans</b>	<b>620</b>	<b>604</b>	<b>515</b>	<b>478</b>	<b>485</b>	<b>7</b>	<b>1%</b>
Sheltered Unaccompanied Youth (up to 24)	--	288	278	247	237	-10	-4%
Unsheltered Unaccompanied Youth (up to 24)	--	42	44	56	49	-7	-12%
<b>Total Unaccompanied Youth (up to 24)</b>	<b>--</b>	<b>330</b>	<b>322</b>	<b>303</b>	<b>286</b>	<b>-17</b>	<b>-6%</b>

### System Performance Measures Summary

	2014	2015	2016	2017	2018	2017-18 Change	% Change
Rate People Return to Homelessness in 6 Months	N/A	9.7%	7.4%	7.6%	8.1%	0.4%	N/A
Number of People who are Homeless for the First Time	N/A	15,569	16,831	15,671	15,520	-151	-1%
Rate People Exit from ES, SH, TH, and RRH to PH	N/A	45.6%	45.0%	45.1%	41.4%	-3.7%	N/A
Rate People in PSH and OPH Retain or Exit to PH	N/A	91.6%	96.0%	93.7%	96.3%	2.6%	N/A

### Housing Inventory Count Summary

	2014	2015	2016	2017	2018	2017-18 Change	% Change
Emergency Shelter (ES)	3,816	3,942	4,013	4,109	4,184	75	2%
Safe Haven (SH)	64	56	56	57	40	-17	-30%
Transitional Housing (TH)	2,394	2,079	1,873	1,462	1,079	-383	-26%
Permanent Supportive Housing (PSH)	3,582	4,020	4,314	4,188	4,375	187	4%
Rapid Re-Housing (RRH)	2,062	2,029	2,563	2,840	3,119	279	10%
Other Permanent Housing (OPH)	138	312	725	912	849	-63	-7%

### Award Summary

	2014	2015	2016	2017	2018	2017-18 Change	% Change
<b>Continuum of Care (CoC)</b>	\$26,943,739	\$28,504,751	\$28,460,145	\$29,919,522	\$30,825,720	\$906,198	3%
<b>Emergency Solutions Grants (ESG)</b>	\$4,157,795	\$4,525,500	\$4,544,691	\$4,921,601	\$4,581,320	(\$340,281)	-7%