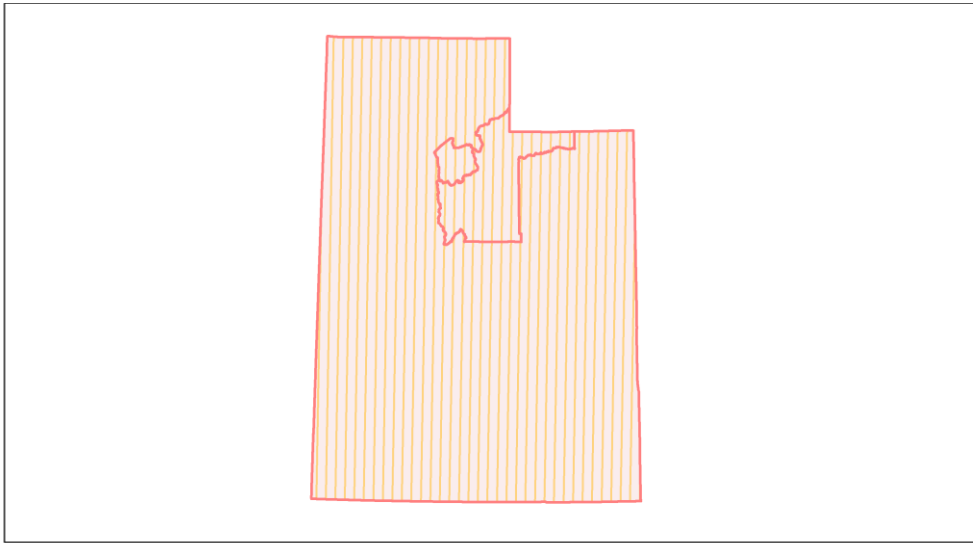
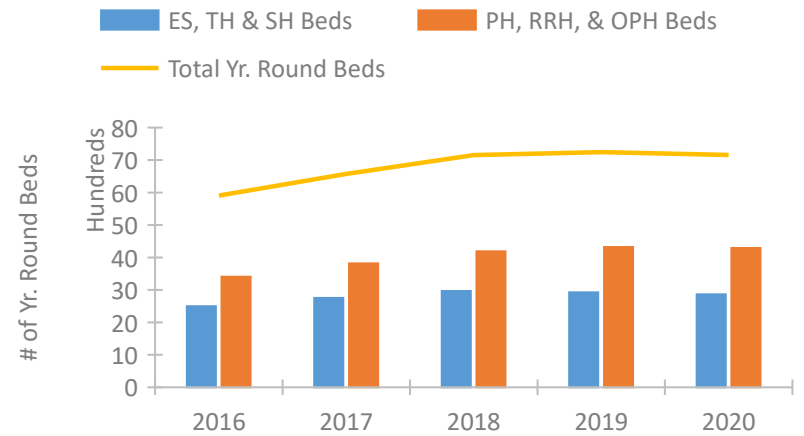


## Utah Continuum of Care Performance Profile

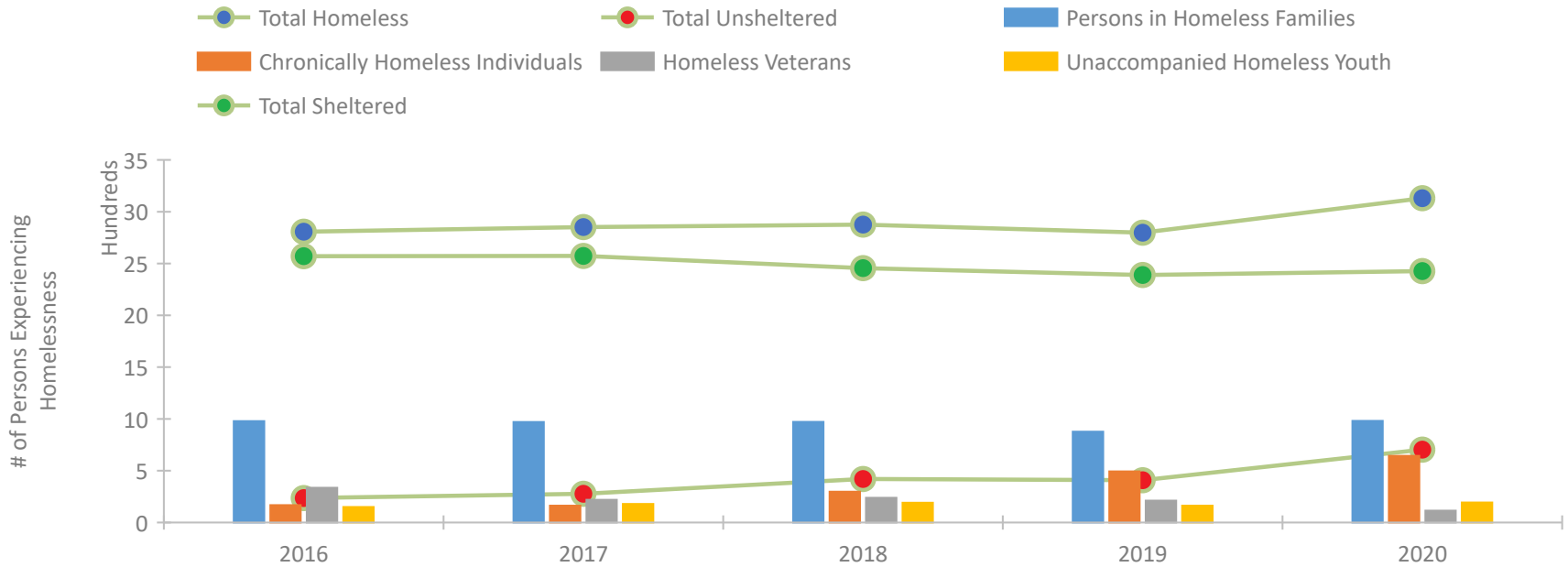


2020 CoC Boundaries 2019 CoC Boundaries

### Housing Inventory Count by Program Type

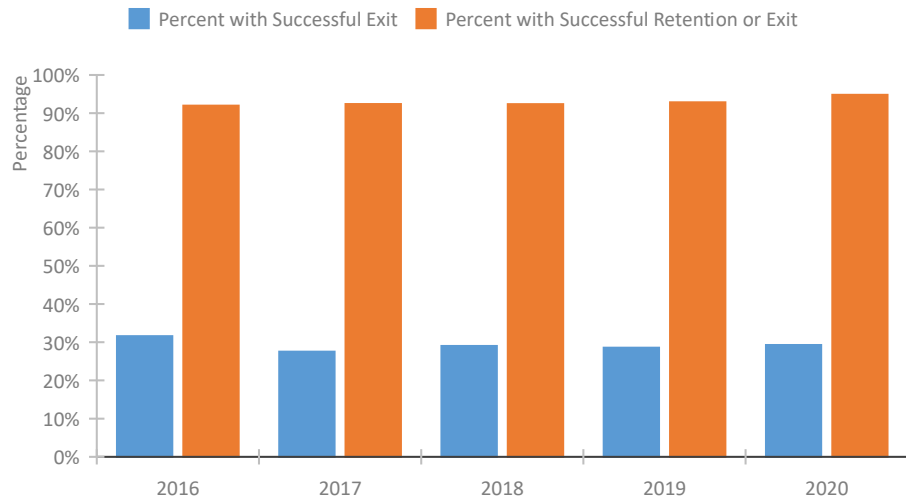


### Homeless Population – Point-in-Time (PIT) Count

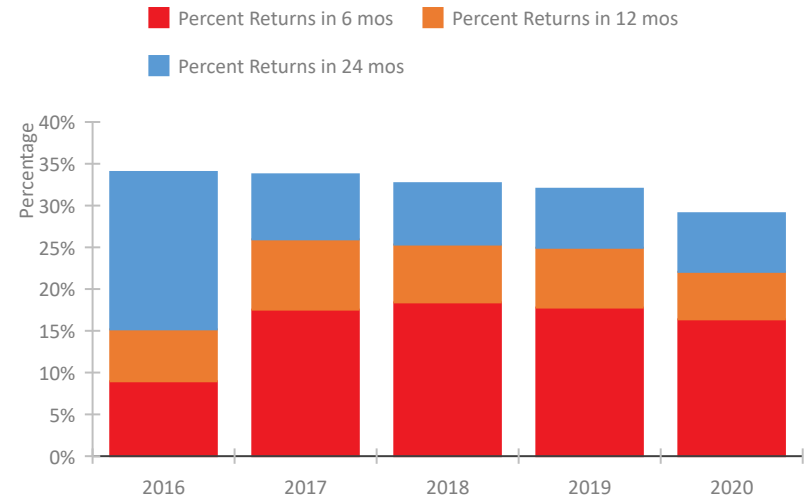


## Utah Continuum of Care Performance Profile

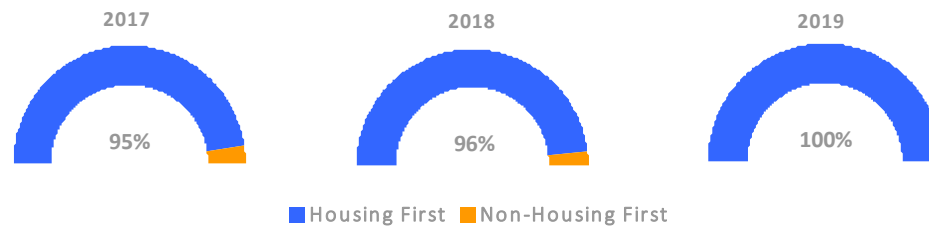
### Exits to Permanent Housing by Program Type



### Returns to Homelessness Over Time



### Proportion of Housing First Projects by Year\*



Number of Projects by Year			
	2017	2018	2019
Housing First Projects	55	53	48
Non-Housing First Projects	3	2	0

\*In 2020 HUD awarded renewal projects noncompetitively, therefore no new data was collected and Housing First data remains the same from 2019 to 2020.

## Data Summary: Utah

### Point-In-Time Count Summary

	2016	2017	2018	2019	2020	2019-20 Change	% Change
Number of Sheltered Persons in Families	959	970	970	874	961	87	10%
Number of Unsheltered Persons in Families	20	0	2	3	20	17	567%
Number of Sheltered Individuals	1,612	1,604	1,486	1,516	1,466	-50	-3%
Number of Unsheltered Individuals	216	278	418	405	684	279	69%
<b>Total Homeless Persons</b>	<b>2,807</b>	<b>2,852</b>	<b>2,876</b>	<b>2,798</b>	<b>3,131</b>	<b>333</b>	<b>12%</b>
Number of Sheltered Families	291	281	286	259	283	24	9%
Number of Unsheltered Families	7	0	1	1	7	6	600%
<b>Number of Total Families</b>	<b>298</b>	<b>281</b>	<b>287</b>	<b>260</b>	<b>290</b>	<b>30</b>	<b>12%</b>
Sheltered Chronically Homeless Individuals	158	119	211	345	386	41	12%
Unsheltered Chronically Homeless Individuals	10	44	87	148	257	109	74%
<b>Total Chronically Homeless Individuals</b>	<b>168</b>	<b>163</b>	<b>298</b>	<b>493</b>	<b>643</b>	<b>150</b>	<b>30%</b>
Sheltered Veterans	311	203	222	184	98	-86	-47%
Unsheltered Veterans	24	17	17	27	16	-11	-41%
<b>Total Veterans</b>	<b>335</b>	<b>220</b>	<b>239</b>	<b>211</b>	<b>114</b>	<b>-97</b>	<b>-46%</b>
Sheltered Unaccompanied Youth (up to 24)	132	146	157	130	130	0	-0%
Unsheltered Unaccompanied Youth (up to 24)	18	34	34	33	64	31	94%
<b>Total Unaccompanied Youth (up to 24)</b>	<b>150</b>	<b>180</b>	<b>191</b>	<b>163</b>	<b>194</b>	<b>31</b>	<b>19%</b>

### System Performance Measures Summary

	2016	2017	2018	2019	2020	2019-20 Change	% Change
Rate People Return to Homelessness in 6 Months	9.0%	17.5%	18.4%	17.8%	16.4%	-1.4%	N/A
Number of People who are Homeless for the First Time	10,865	10,133	9,929	9,044	7,437	-1,607	-17.8%
Rate People Exit from ES, SH, TH, and RRH to PH	31.6%	27.5%	29.1%	28.6%	29.3%	0.7%	N/A
Rate People in PSH and OPH Retain or Exit to PH	92.0%	92.4%	92.3%	92.8%	94.8%	2%	N/A

### Housing Inventory Count Summary

	2016	2017	2018	2019	2020	2019-20 Change	% Change
Emergency Shelter (ES)	1,810	2,280	2,387	2,389	2,315	-74	-3%
Transitional Housing (TH)	689	474	581	538	550	12	2%
Permanent Supportive Housing (PSH)	2,393	2,562	2,624	3,012	3,119	107	4%
Rapid Re-Housing (RRH)	1,012	1,132	1,409	1,208	999	-209	-17%
Other Permanent Housing (OPH)	2	125	155	98	174	76	78%

### Award Summary

	2016	2017	2018	2019	2020	2019-20 Change	% Change
<b>Continuum of Care (CoC)</b>	\$10,089,585	\$10,386,327	\$10,903,163	\$11,405,578	\$12,522,881	\$1,117,303	10%
<b>Emergency Solutions Grants (ESG)</b>	\$1,736,732	\$1,749,901	\$1,762,644	\$1,814,598	\$1,863,307	\$48,709	3%