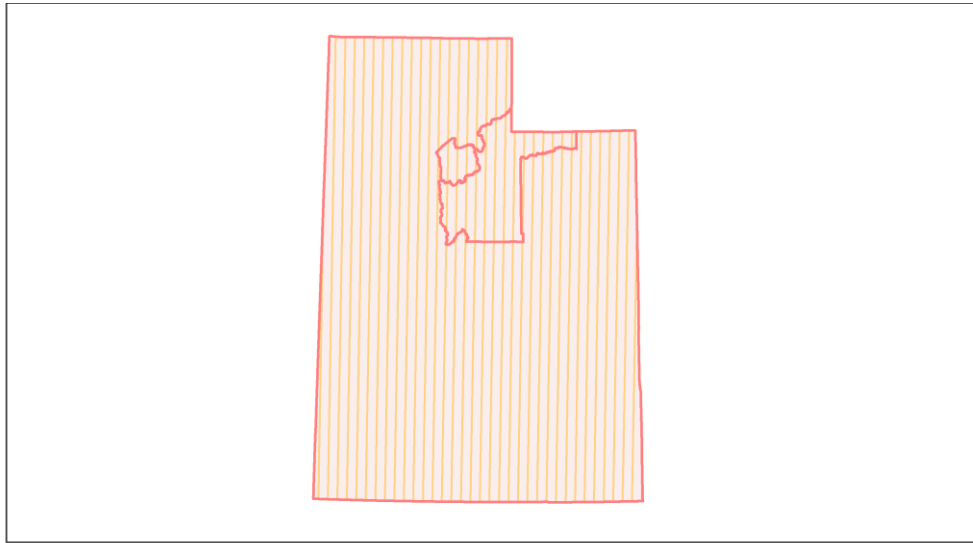
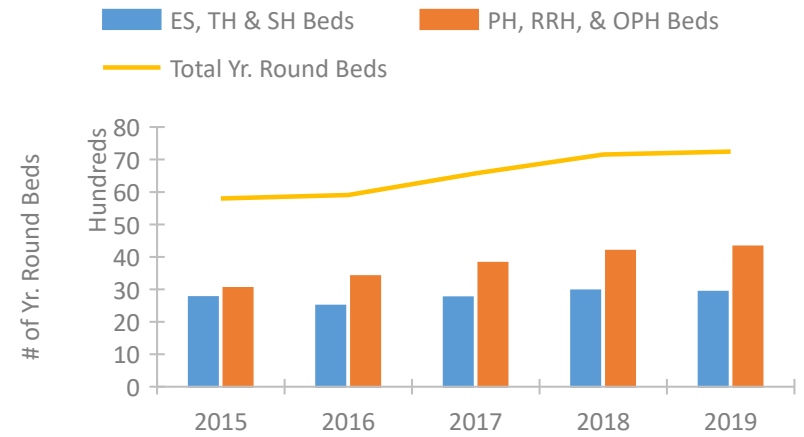


Utah Continuum of Care Performance Profile

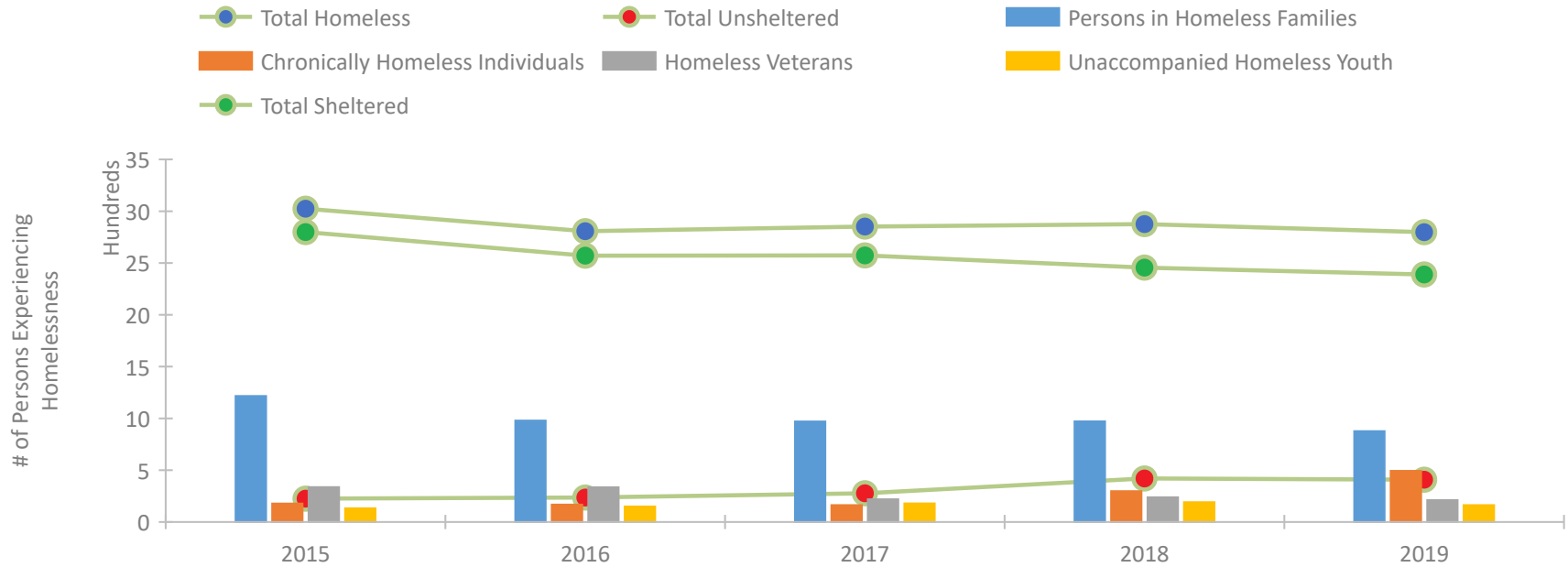


2019 CoC Boundaries 2018 CoC Boundaries

Housing Inventory Count by Program Type

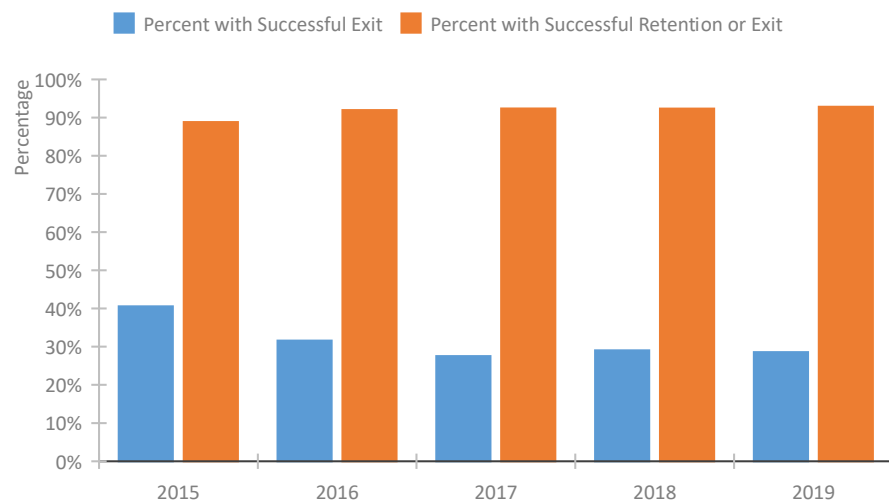


Homeless Population – Point-in-Time (PIT) Count

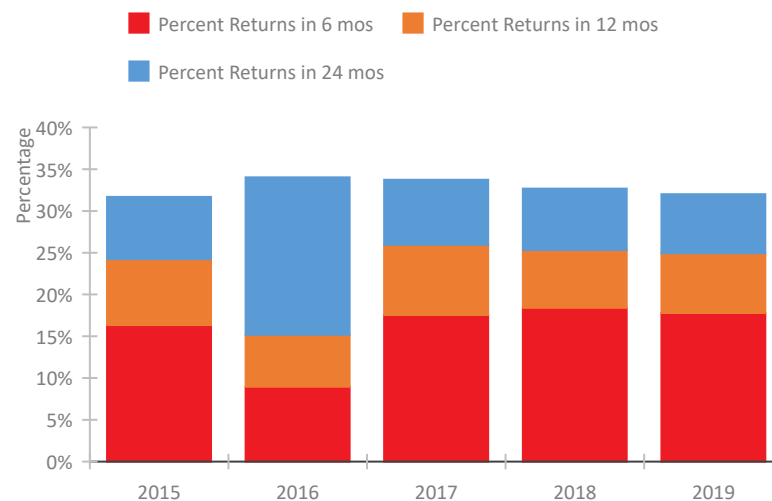


Utah Continuum of Care Performance Profile

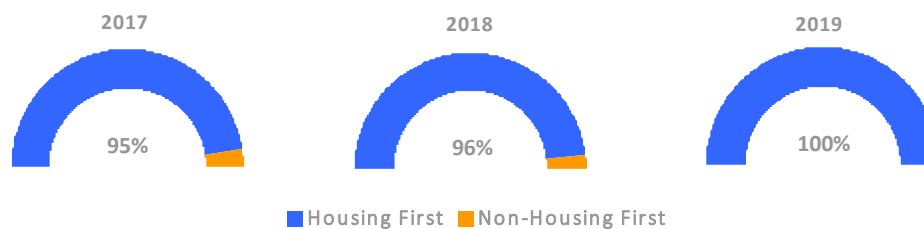
Exits to Permanent Housing by Program Type



Returns to Homelessness Over Time



Proportion of Housing First Projects by Year



Number of Projects by Year

	2017	2018	2019
Housing First Projects	55	53	48
Non-Housing First Projects	3	2	0

Data Summary: Utah

Point-In-Time Count Summary

	2015	2016	2017	2018	2019	2018-19 Change	% Change
Number of Sheltered Persons in Families	1,194	959	970	970	874	-96	-10%
Number of Unsheltered Persons in Families	22	20	0	2	3	1	50%
Number of Sheltered Individuals	1,605	1,612	1,604	1,486	1,516	30	2%
Number of Unsheltered Individuals	204	216	278	418	405	-13	-3%
Total Homeless Persons	3,025	2,807	2,852	2,876	2,798	-78	-3%
Number of Sheltered Families	357	291	281	286	259	-27	-9%
Number of Unsheltered Families	7	7	0	1	1	0	0%
Number of Total Families	364	298	281	287	260	-27	-9%
Sheltered Chronically Homeless Individuals	165	158	119	211	345	134	64%
Unsheltered Chronically Homeless Individuals	13	10	44	87	148	61	70%
Total Chronically Homeless Individuals	178	168	163	298	493	195	65%
Sheltered Veterans	313	311	203	222	184	-38	-17%
Unsheltered Veterans	24	24	17	17	27	10	59%
Total Veterans	337	335	220	239	211	-28	-12%
Sheltered Unaccompanied Youth (up to 24)	106	132	146	157	130	-27	-17%
Unsheltered Unaccompanied Youth (up to 24)	26	18	34	34	33	-1	-3%
Total Unaccompanied Youth (up to 24)	132	150	180	191	163	-28	-15%

System Performance Measures Summary

	2015	2016	2017	2018	2019	2018-19 Change	% Change
Rate People Return to Homelessness in 6 Months	16.3%	9.0%	17.5%	18.4%	17.8%	-0.6%	N/A
Number of People who are Homeless for the First Time	9,552	10,865	10,133	9,929	9,044	-885	-8.9%
Rate People Exit from ES, SH, TH, and RRH to PH	40.6%	31.6%	27.5%	29.1%	28.6%	-0.5%	N/A
Rate People in PSH and OPH Retain or Exit to PH	88.8%	92.0%	92.4%	92.3%	92.8%	0.5%	N/A

Housing Inventory Count Summary

	2015	2016	2017	2018	2019	2018-19 Change	% Change
Emergency Shelter (ES)	1,697	1,810	2,280	2,387	2,389	2	0%
Transitional Housing (TH)	1,039	689	474	581	538	-43	-7%
Permanent Supportive Housing (PSH)	2,403	2,393	2,562	2,624	3,012	388	15%
Rapid Re-Housing (RRH)	637	1,012	1,132	1,409	1,208	-201	-14%
Other Permanent Housing (OPH)	2	2	125	155	98	-57	-37%

Award Summary

	2015	2016	2017	2018	2019	2018-19 Change	% Change
Continuum of Care (CoC)	\$10,119,752	\$10,089,585	\$10,386,327	\$10,903,163	\$11,405,578	\$502,415	5%
Emergency Solutions Grants (ESG)	\$1,706,345	\$1,736,732	\$1,749,901	\$1,762,644	\$1,814,598	\$51,954	3%