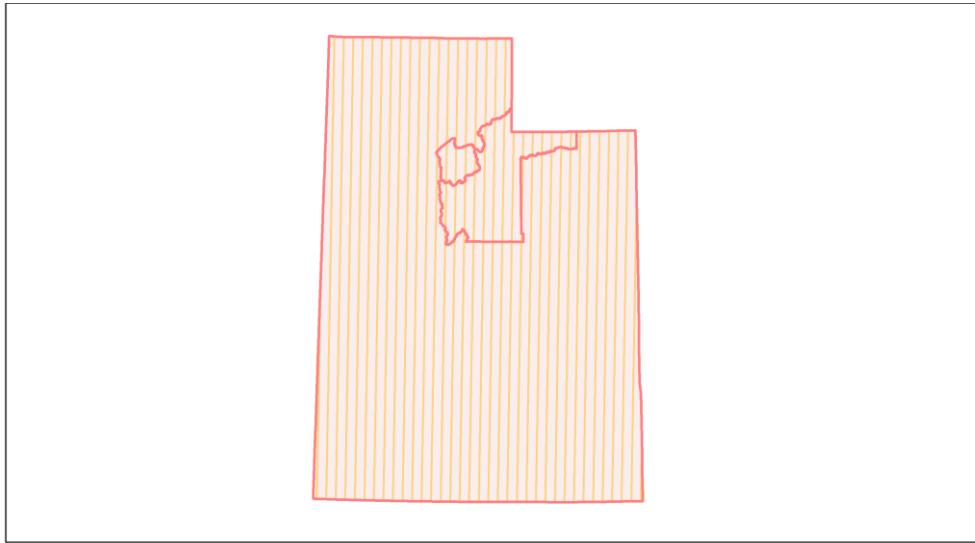
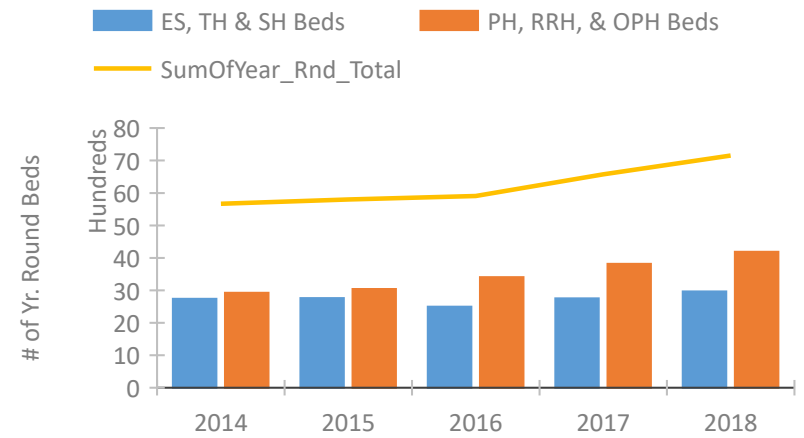


## Utah Continuum of Care Performance Profile

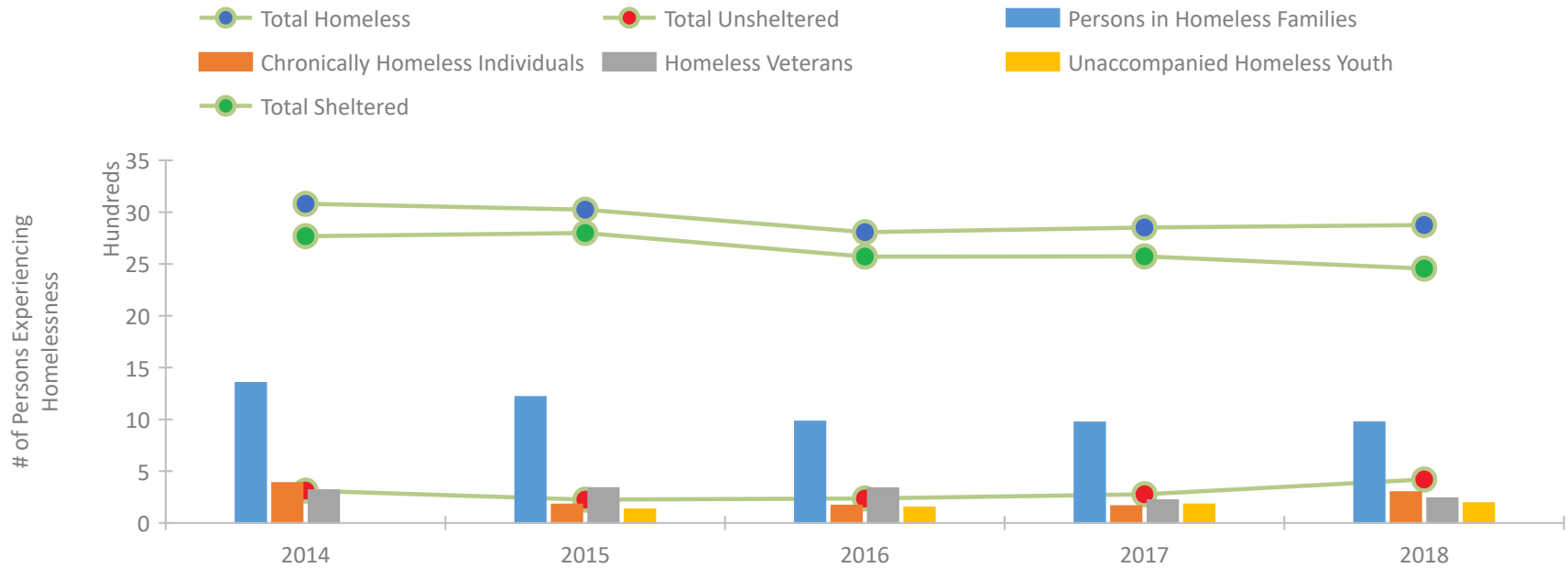


2018 CoC Boundaries 2017 CoC Boundaries

### Housing Inventory Count by Program Type

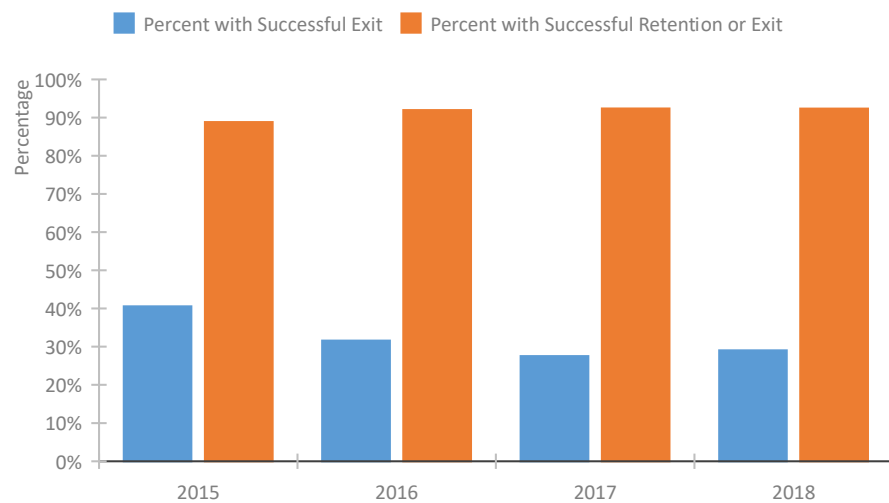


### Homeless Population – Point-in-Time (PIT) Count

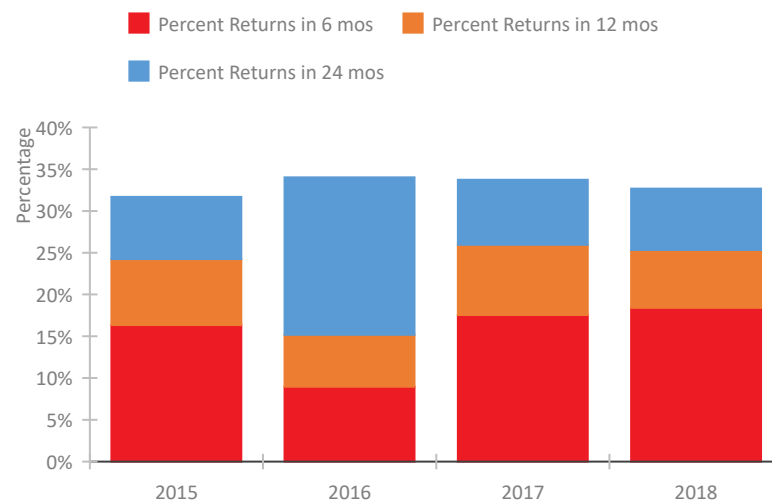


## Utah Continuum of Care Performance Profile

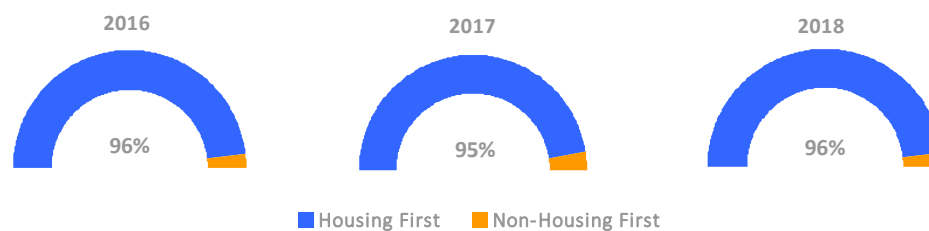
### Exits to Permanent Housing by Program Type



### Returns to Homelessness Over Time



### Proportion of Housing First Projects by Year



### Number of Projects by Year

	2016	2017	2018
Housing First Projects	52	55	53
Non-Housing First Projects	2	3	2

## Data Summary: Utah

### Point-In-Time Count Summary

	2014	2015	2016	2017	2018	2017-18 Change	% Change
Number of Sheltered Persons in Families	1,228	1,194	959	970	970	0	0%
Number of Unsheltered Persons in Families	124	22	20	0	2	2	100%
Number of Sheltered Individuals	1,537	1,594	1,595	1,574	1,469	-105	-7%
Number of Unsheltered Individuals	189	204	215	278	417	139	50%
<b>Total Homeless Persons</b>	<b>3,078</b>	<b>3,014</b>	<b>2,789</b>	<b>2,822</b>	<b>2,858</b>	<b>36</b>	<b>1%</b>
Number of Sheltered Families	380	357	291	281	286	5	2%
Number of Unsheltered Families	18	7	7	0	1	1	100%
<b>Number of Total Families</b>	<b>398</b>	<b>364</b>	<b>298</b>	<b>281</b>	<b>287</b>	<b>6</b>	<b>2%</b>
Sheltered Chronically Homeless Individuals	346	165	158	119	211	92	77%
Unsheltered Chronically Homeless Individuals	40	13	10	44	87	43	98%
<b>Total Chronically Homeless Individuals</b>	<b>386</b>	<b>178</b>	<b>168</b>	<b>163</b>	<b>298</b>	<b>135</b>	<b>83%</b>
Sheltered Veterans	293	313	311	203	222	19	9%
Unsheltered Veterans	24	24	24	17	17	0	0%
<b>Total Veterans</b>	<b>317</b>	<b>337</b>	<b>335</b>	<b>220</b>	<b>239</b>	<b>19</b>	<b>9%</b>
Sheltered Unaccompanied Youth (up to 24)	--	106	132	146	157	11	8%
Unsheltered Unaccompanied Youth (up to 24)	--	26	18	34	34	0	0%
<b>Total Unaccompanied Youth (up to 24)</b>	<b>--</b>	<b>132</b>	<b>150</b>	<b>180</b>	<b>191</b>	<b>11</b>	<b>6%</b>

### System Performance Measures Summary

	2014	2015	2016	2017	2018	2017-18 Change	% Change
Rate People Return to Homelessness in 6 Months	N/A	16.3%	9.0%	17.5%	18.4%	0.9%	N/A
Number of People who are Homeless for the First Time	N/A	9,552	10,865	10,133	9,929	-204	-2%
Rate People Exit from ES, SH, TH, and RRH to PH	N/A	40.6%	31.6%	27.5%	29.1%	1.5%	N/A
Rate People in PSH and OPH Retain or Exit to PH	N/A	88.8%	92.0%	92.4%	92.3%	-0.1%	N/A

### Housing Inventory Count Summary

	2014	2015	2016	2017	2018	2017-18 Change	% Change
Emergency Shelter (ES)	1,535	1,697	1,810	2,280	2,387	107	5%
Transitional Housing (TH)	1,156	1,039	689	474	581	107	23%
Permanent Supportive Housing (PSH)	2,264	2,403	2,393	2,562	2,624	62	2%
Rapid Re-Housing (RRH)	657	637	1,012	1,132	1,409	277	24%
Other Permanent Housing (OPH)	6	2	2	125	155	30	24%

### Award Summary

	2014	2015	2016	2017	2018	2017-18 Change	% Change
<b>Continuum of Care (CoC)</b>	\$8,468,719	\$10,119,752	\$10,089,585	\$10,386,327	\$10,903,163	\$516,836	5%
<b>Emergency Solutions Grants (ESG)</b>	\$1,566,956	\$1,706,345	\$1,736,732	\$1,749,901	\$1,762,644	\$12,743	1%