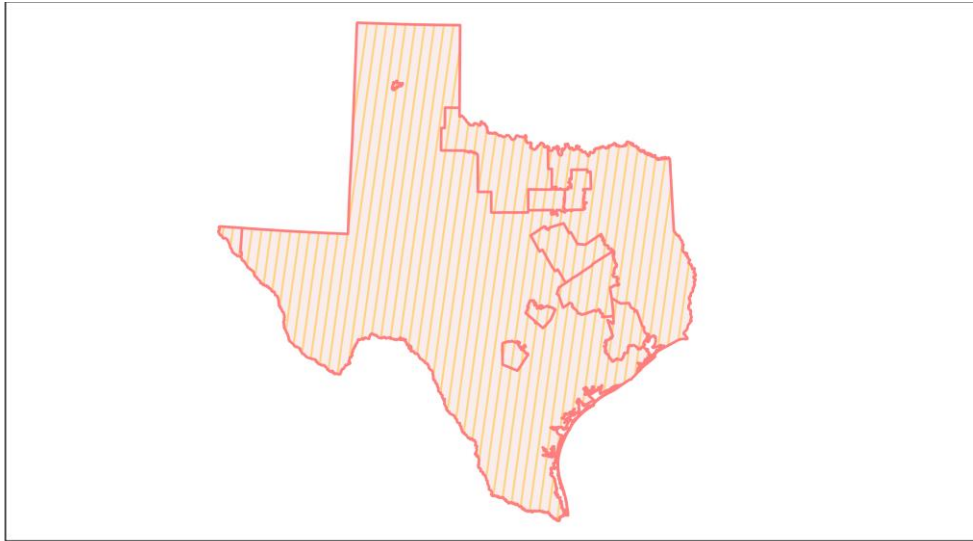
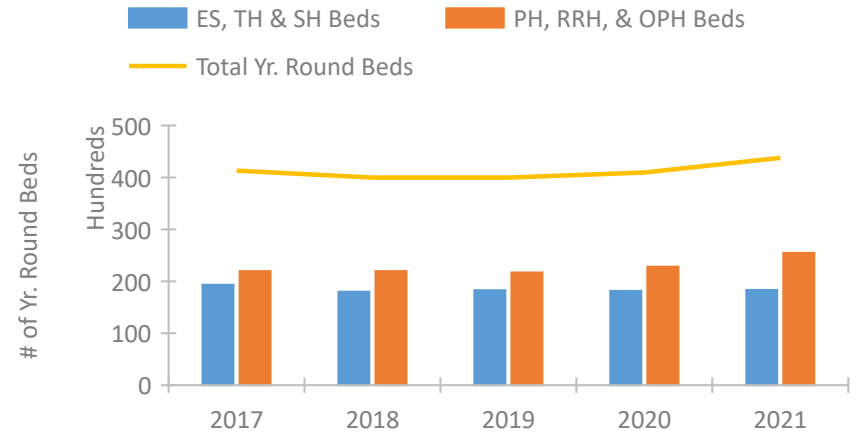


Texas Continuum of Care Performance Profile

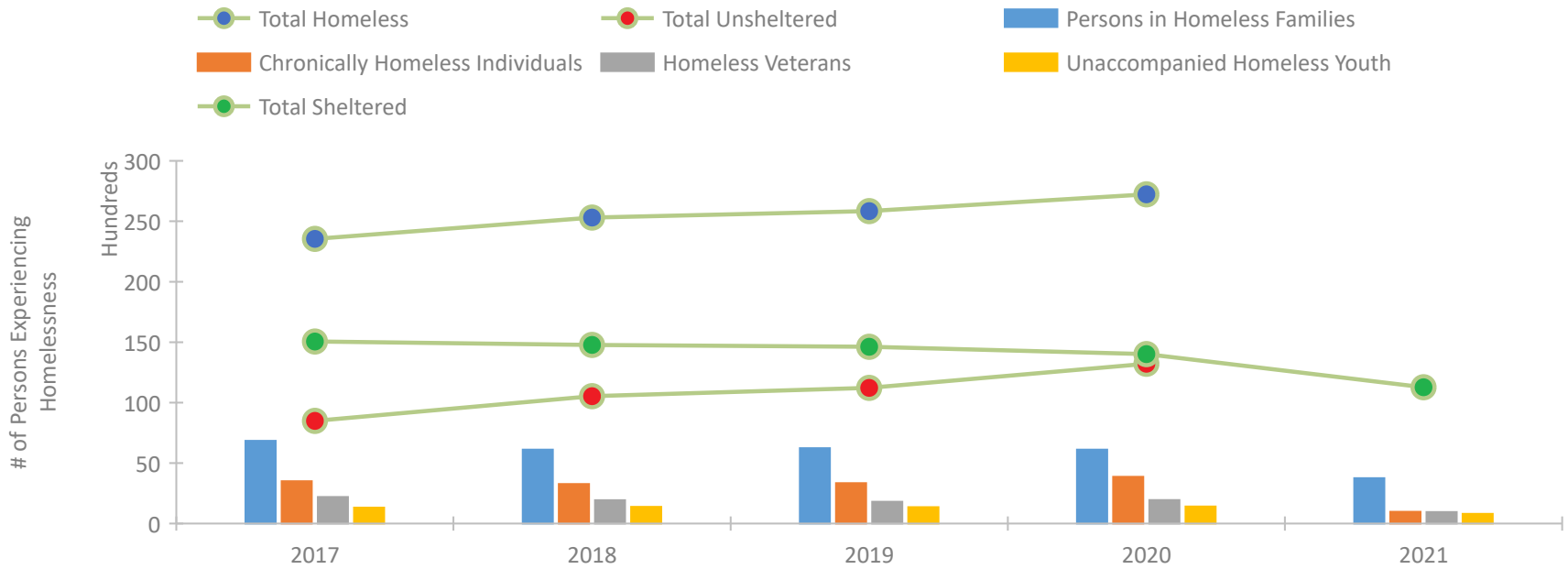


2021 CoC Boundaries / 2020 CoC Boundaries

Housing Inventory Count by Program Type



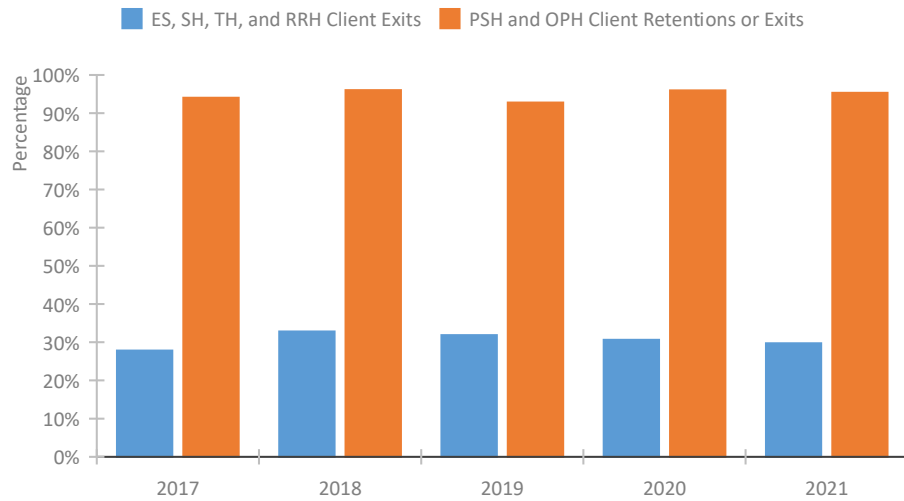
Homeless Population – Point-in-Time (PIT) Count*



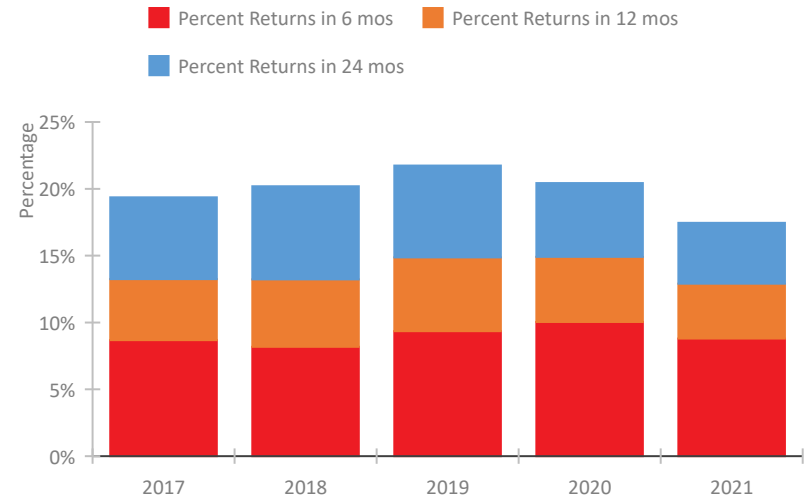
*In 2021, HUD gave communities the option to cancel or modify the unsheltered survey portion of their counts based on the potential risk of COVID-19 transmission associated with conducting an in-person survey. As a result, HUD has excluded the unsheltered population sub-totals and all unsheltered sub-population data for this reporting period. The user is cautioned that the unsheltered and total homeless counts reported here may be missing data.

Texas Continuum of Care Performance Profile

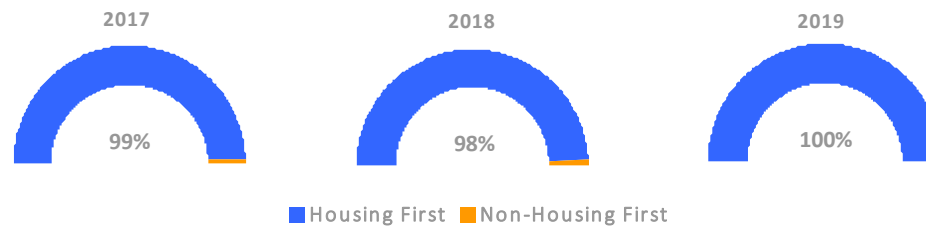
Exits to Permanent Housing by Program Type



Returns to Homelessness Over Time



Proportion of Housing First Projects by Year†



Number of Projects by Year			
	2017	2018	2019
Housing First Projects	197	205	181
Non-Housing First Projects	2	4	0

†2021 Data unavailable at the time of report publication. In 2020 HUD awarded renewal projects noncompetitively, therefore no new data was collected and Housing First data remains the same from 2019 to 2020.

Data Summary: Texas

Point-In-Time Count Summary*

	2017	2018	2019	2020	2021	2020-21 Change	% Change
Number of Sheltered Persons in Families	6,341	5,859	5,963	5,608	3,757	-1,851	-33%
Number of Unsheltered Persons in Families	499	252	274	506	0	-506	-100%
Number of Sheltered Individuals	8,714	8,917	8,663	8,409	7,518	-891	-11%
Number of Unsheltered Individuals	7,994	10,282	10,948	12,706	--	--	--
Total Homeless Persons	23,548	25,310	25,848	27,229	11,275	-15,954	-59%
Number of Sheltered Families	1,986	1,845	1,844	1,783	1,202	-581	-33%
Number of Unsheltered Families	182	72	75	129	--	--	--
Number of Total Families	2,168	1,917	1,919	1,912	1,202	-710	-37%
Sheltered Chronically Homeless Individuals	1,319	1,379	1,476	1,157	972	-185	-16%
Unsheltered Chronically Homeless Individuals	2,178	1,890	1,862	2,705	--	--	--
Total Chronically Homeless Individuals	3,497	3,269	3,338	3,862	972	-2,890	-75%
Sheltered Veterans	1,379	1,142	1,225	1,117	950	-167	-15%
Unsheltered Veterans	821	793	581	831	--	--	--
Total Veterans	2,200	1,935	1,806	1,948	950	-998	-51%
Sheltered Unaccompanied Youth (up to 24)	772	754	742	786	799	13	2%
Unsheltered Unaccompanied Youth (up to 24)	546	625	613	622	--	--	--
Total Unaccompanied Youth (up to 24)	1,318	1,379	1,355	1,408	799	-609	-43%

System Performance Measures Summary

	2017	2018	2019	2020	2021	2020-21 Change	% Change
Rate People Return to Homelessness in 6 Months	8.7%	8.2%	9.3%	10.0%	8.8%	-1.2%	N/A
Number of People who are Homeless for the First Time	48,402	43,322	49,566	33,575	50,934	17,359	51.7%
Rate People Exit from ES, SH, TH, and RRH to PH	27.8%	32.8%	31.9%	30.6%	29.8%	-0.9%	N/A
Rate People in PSH and OPH Retain or Exit to PH	94.0%	96.0%	92.8%	95.9%	95.3%	-0.6%	N/A

Housing Inventory Count Summary

	2017	2018	2019	2020	2021	2020-21 Change	% Change
Emergency Shelter (ES)	13,475	13,487	13,383	13,872	14,441	569	4%
Safe Haven (SH)	84	109	112	159	132	-27	-17%
Transitional Housing (TH)	5,785	4,410	4,776	4,110	3,747	-363	-9%
Permanent Supportive Housing (PSH)	14,376	14,432	14,069	14,797	14,691	-106	-1%
Rapid Re-Housing (RRH)	4,775	5,143	5,123	5,645	8,333	2,688	48%
Other Permanent Housing (OPH)	2,814	2,393	2,513	2,374	2,454	80	3%

Award Summary

	2017	2018	2019	2020	2021	2020-21 Change	% Change
Continuum of Care (CoC)	\$88,801,836	\$97,243,257	\$108,203,952	\$113,987,708	\$125,983,221	\$11,995,513	11%
Emergency Solutions Grants (ESG)	\$22,142,699	\$19,384,204	\$20,042,283	\$20,816,124	\$20,878,381	\$62,257	0%
Youth Homelessness Demonstration Program (YHDP)	--	\$9,107,696	--	\$14,160,890	--	--	--

*In 2021, HUD gave communities the option to cancel or modify the unsheltered survey portion of their counts based on the potential risk of COVID-19 transmission associated with conducting an in-person survey. As a result, HUD has excluded the unsheltered population sub-totals and all unsheltered sub-population data for this reporting period. The user is cautioned that the unsheltered and total homeless counts reported here may be missing data.