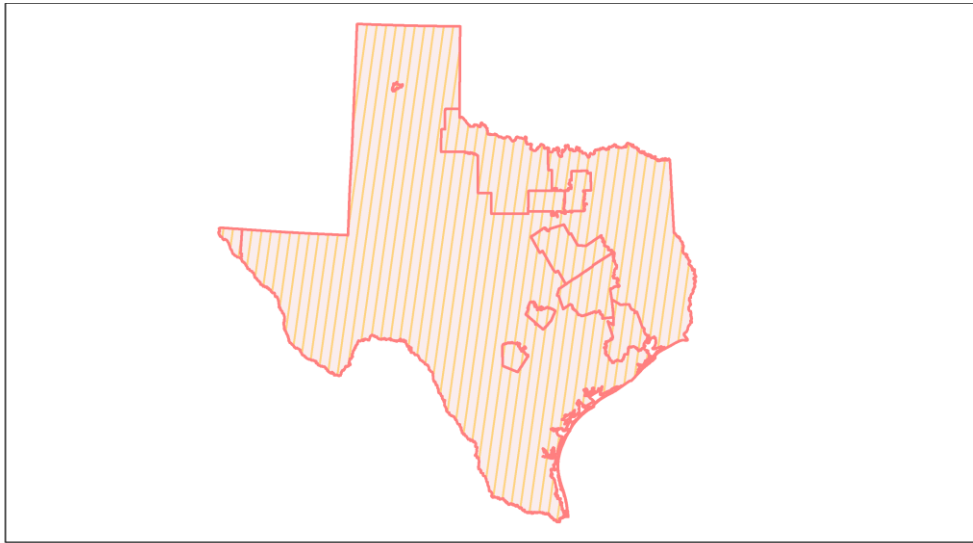
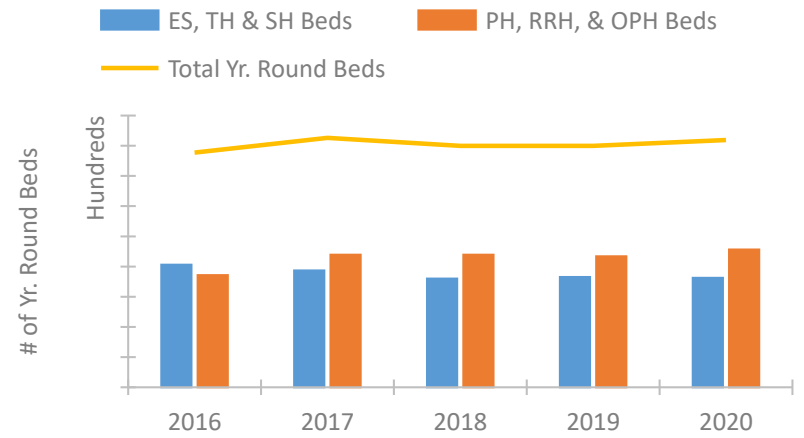


Texas Continuum of Care Performance Profile

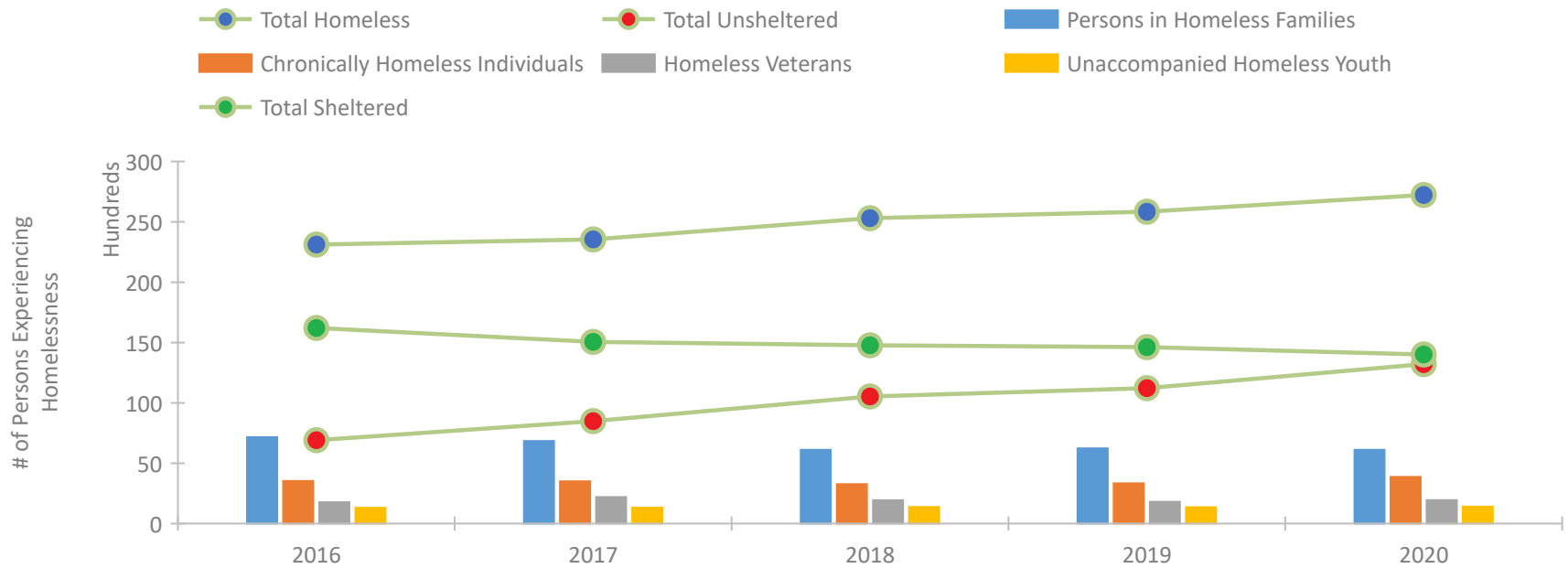


2020 CoC Boundaries 2019 CoC Boundaries

Housing Inventory Count by Program Type

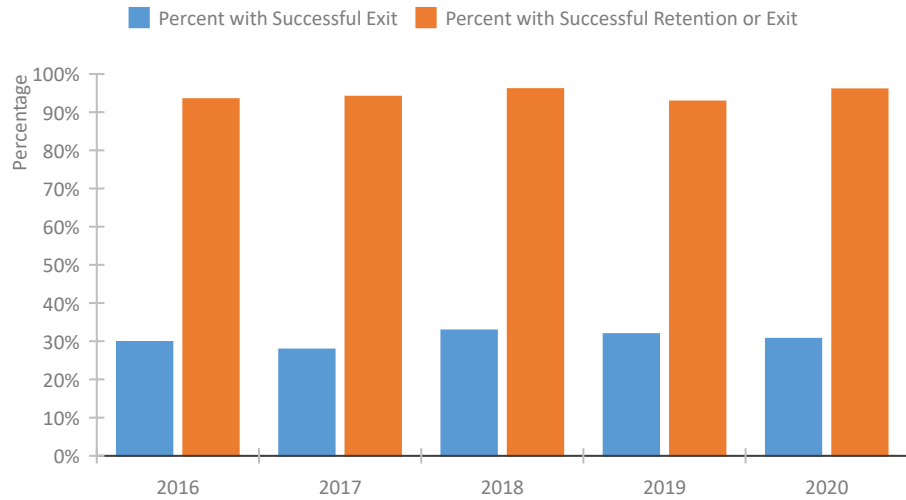


Homeless Population – Point-in-Time (PIT) Count

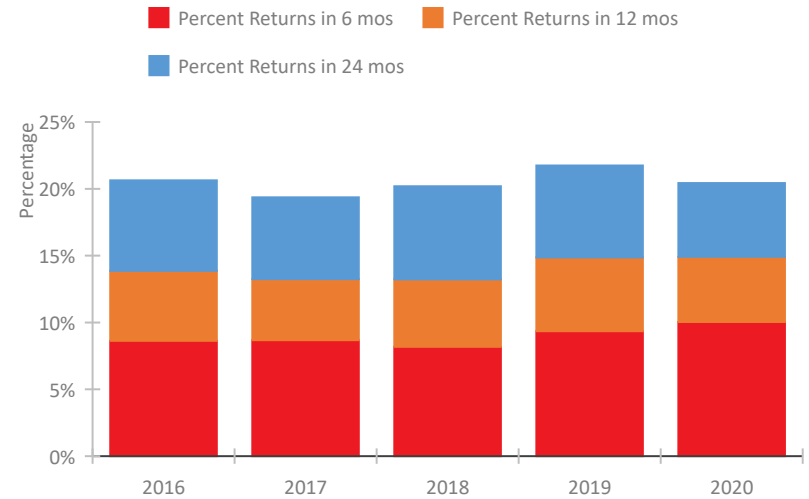


Texas Continuum of Care Performance Profile

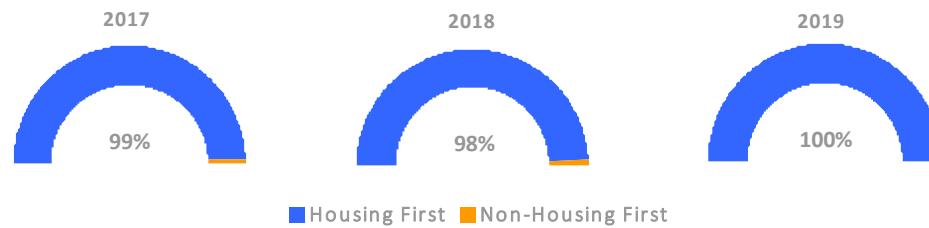
Exits to Permanent Housing by Program Type



Returns to Homelessness Over Time



Proportion of Housing First Projects by Year*



Number of Projects by Year			
	2017	2018	2019
Housing First Projects	197	205	181
Non-Housing First Projects	2	4	0

*In 2020 HUD awarded renewal projects noncompetitively, therefore no new data was collected and Housing First data remains the same from 2019 to 2020.

Data Summary: Texas

Point-In-Time Count Summary

	2016	2017	2018	2019	2020	2019-20 Change	% Change
Number of Sheltered Persons in Families	6,899	6,341	5,859	5,963	5,608	-355	-6%
Number of Unsheltered Persons in Families	264	499	252	274	506	232	85%
Number of Sheltered Individuals	9,315	8,714	8,917	8,663	8,409	-254	-3%
Number of Unsheltered Individuals	6,644	7,994	10,282	10,948	12,706	1,758	16%
Total Homeless Persons	23,122	23,548	25,310	25,848	27,229	1,381	5%
Number of Sheltered Families	2,216	1,986	1,845	1,844	1,783	-61	-3%
Number of Unsheltered Families	81	182	72	75	129	54	72%
Number of Total Families	2,297	2,168	1,917	1,919	1,912	-7	-0%
Sheltered Chronically Homeless Individuals	1,500	1,319	1,379	1,476	1,157	-319	-22%
Unsheltered Chronically Homeless Individuals	2,034	2,178	1,890	1,862	2,705	843	45%
Total Chronically Homeless Individuals	3,534	3,497	3,269	3,338	3,862	524	16%
Sheltered Veterans	1,285	1,379	1,142	1,225	1,117	-108	-9%
Unsheltered Veterans	483	821	793	581	831	250	43%
Total Veterans	1,768	2,200	1,935	1,806	1,948	142	8%
Sheltered Unaccompanied Youth (up to 24)	764	772	754	742	786	44	6%
Unsheltered Unaccompanied Youth (up to 24)	545	546	625	613	622	9	1%
Total Unaccompanied Youth (up to 24)	1,309	1,318	1,379	1,355	1,408	53	4%

System Performance Measures Summary

	2016	2017	2018	2019	2020	2019-20 Change	% Change
Rate People Return to Homelessness in 6 Months	8.6%	8.7%	8.2%	9.3%	10.0%	0.7%	N/A
Number of People who are Homeless for the First Time	40,605	48,402	43,322	49,566	33,575	-15,991	-32.3%
Rate People Exit from ES, SH, TH, and RRH to PH	29.8%	27.8%	32.8%	31.9%	30.6%	-1.2%	N/A
Rate People in PSH and OPH Retain or Exit to PH	93.4%	94.0%	96.0%	92.8%	95.9%	3.2%	N/A

Housing Inventory Count Summary

	2016	2017	2018	2019	2020	2019-20 Change	% Change
Emergency Shelter (ES)	13,328	13,475	13,487	13,383	13,872	489	4%
Safe Haven (SH)	106	84	109	112	159	47	42%
Transitional Housing (TH)	6,863	5,785	4,410	4,776	4,110	-666	-14%
Permanent Supportive Housing (PSH)	12,725	14,376	14,432	14,069	14,797	728	5%
Rapid Re-Housing (RRH)	3,367	4,775	5,143	5,123	5,645	522	10%
Other Permanent Housing (OPH)	2,434	2,814	2,393	2,513	2,374	-139	-6%

Award Summary

	2016	2017	2018	2019	2020	2019-20 Change	% Change
Continuum of Care (CoC)	\$86,315,343	\$88,801,836	\$97,243,257	\$108,203,952	\$113,987,708	\$5,783,756	5%
Emergency Solutions Grants (ESG)	\$19,408,550	\$22,142,699	\$19,384,204	\$20,042,283	\$20,816,124	\$773,841	4%
Youth Homelessness Demonstration Program (YHDP)	\$5,227,483	--	\$9,107,696	--	\$14,160,890	--	--