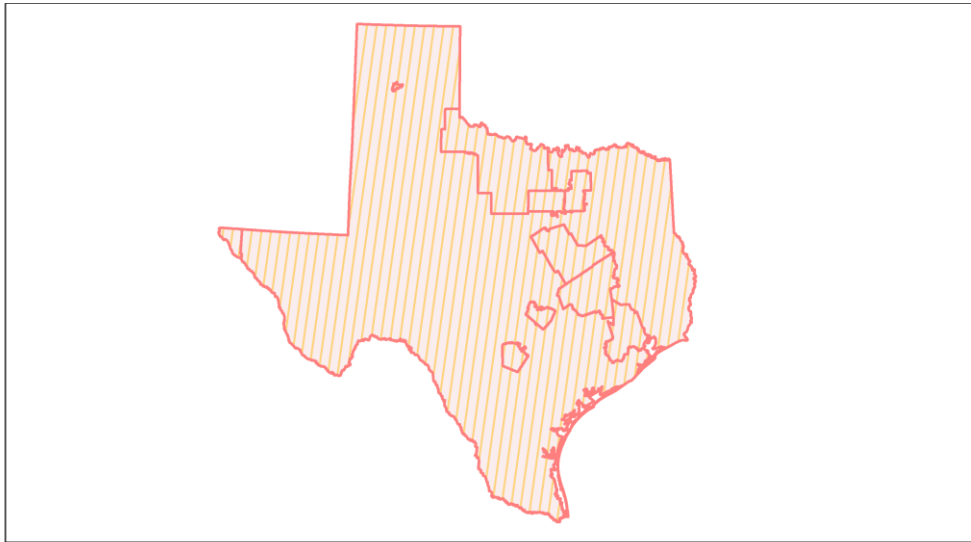
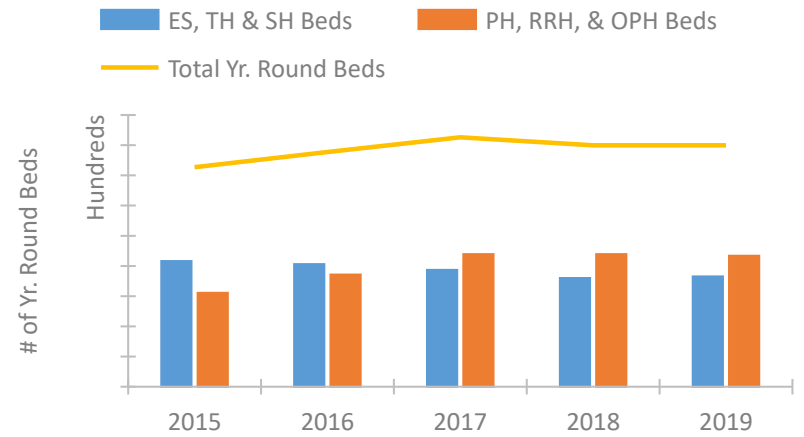


Texas Continuum of Care Performance Profile

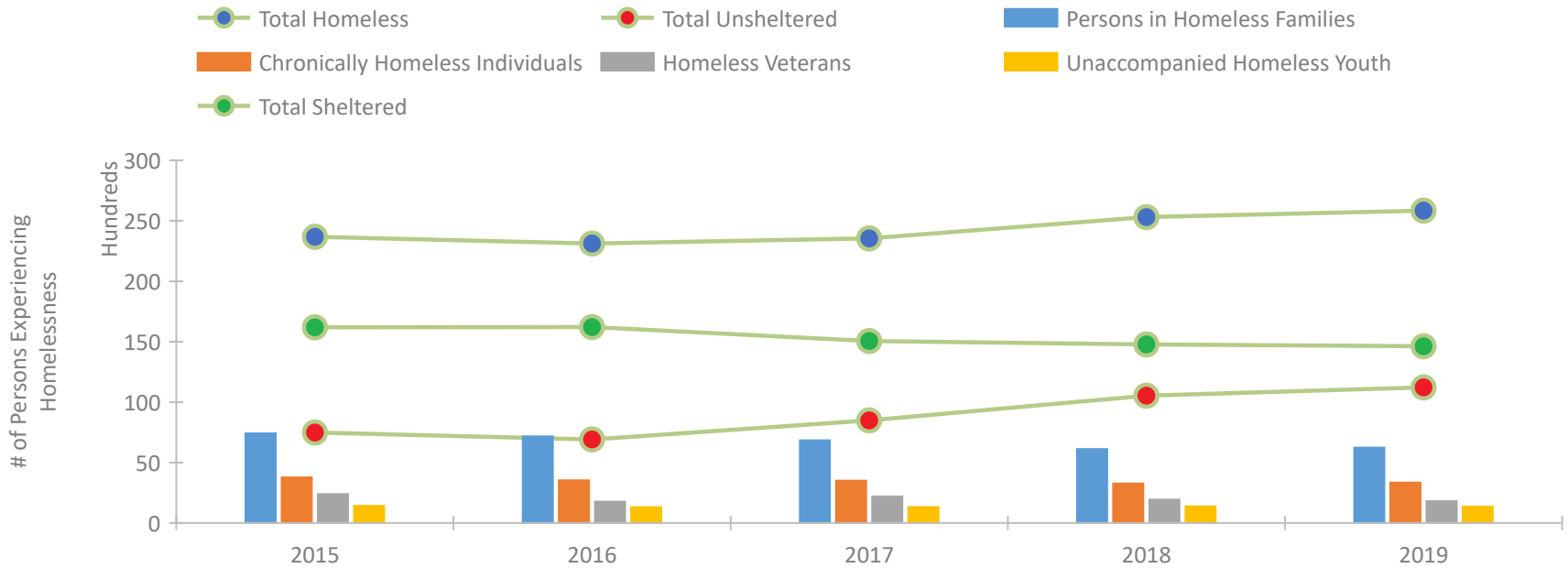


2019 CoC Boundaries 2018 CoC Boundaries

Housing Inventory Count by Program Type

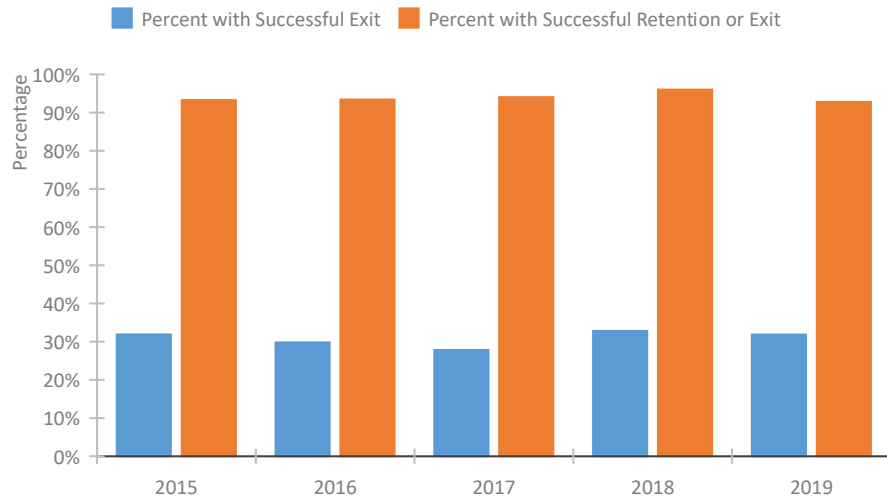


Homeless Population – Point-in-Time (PIT) Count

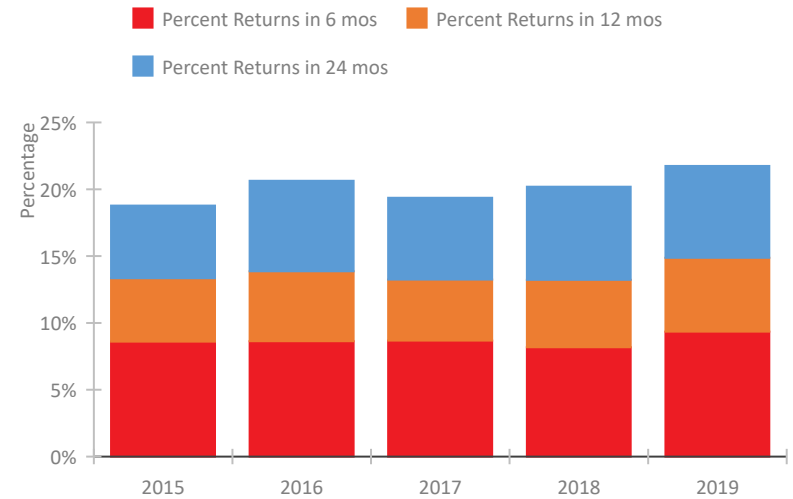


Texas Continuum of Care Performance Profile

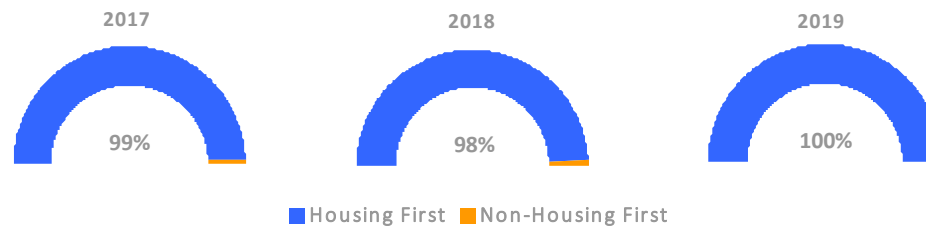
Exits to Permanent Housing by Program Type



Returns to Homelessness Over Time



Proportion of Housing First Projects by Year



Number of Projects by Year

	2017	2018	2019
Housing First Projects	197	205	181
Non-Housing First Projects	2	4	0

Data Summary: Texas

Point-In-Time Count Summary

	2015	2016	2017	2018	2019	2018-19 Change	% Change
Number of Sheltered Persons in Families	6,958	6,899	6,341	5,859	5,963	104	2%
Number of Unsheltered Persons in Families	455	264	499	252	274	22	9%
Number of Sheltered Individuals	9,234	9,315	8,714	8,917	8,663	-254	-3%
Number of Unsheltered Individuals	7,031	6,644	7,994	10,282	10,948	666	6%
Total Homeless Persons	23,678	23,122	23,548	25,310	25,848	538	2%
Number of Sheltered Families	2,159	2,216	1,986	1,845	1,844	-1	0%
Number of Unsheltered Families	157	81	182	72	75	3	4%
Number of Total Families	2,316	2,297	2,168	1,917	1,919	2	0%
Sheltered Chronically Homeless Individuals	1,543	1,500	1,319	1,379	1,476	97	7%
Unsheltered Chronically Homeless Individuals	2,235	2,034	2,178	1,890	1,862	-28	-1%
Total Chronically Homeless Individuals	3,778	3,534	3,497	3,269	3,338	69	2%
Sheltered Veterans	1,490	1,285	1,379	1,142	1,225	83	7%
Unsheltered Veterans	903	483	821	793	581	-212	-27%
Total Veterans	2,393	1,768	2,200	1,935	1,806	-129	-7%
Sheltered Unaccompanied Youth (up to 24)	797	764	772	754	742	-12	-2%
Unsheltered Unaccompanied Youth (up to 24)	619	545	546	625	613	-12	-2%
Total Unaccompanied Youth (up to 24)	1,416	1,309	1,318	1,379	1,355	-24	-2%

System Performance Measures Summary

	2015	2016	2017	2018	2019	2018-19 Change	% Change
Rate People Return to Homelessness in 6 Months	8.6%	8.6%	8.7%	8.2%	9.3%	1.2%	N/A
Number of People who are Homeless for the First Time	44,800	40,605	48,402	43,322	49,566	6,244	14.4%
Rate People Exit from ES, SH, TH, and RRH to PH	31.9%	29.8%	27.8%	32.8%	31.9%	-0.9%	N/A
Rate People in PSH and OPH Retain or Exit to PH	93.2%	93.4%	94.0%	96.0%	92.8%	-3.3%	N/A

Housing Inventory Count Summary

	2015	2016	2017	2018	2019	2018-19 Change	% Change
Emergency Shelter (ES)	13,382	13,328	13,475	13,487	13,383	-104	-1%
Safe Haven (SH)	128	106	84	109	112	3	3%
Transitional Housing (TH)	7,302	6,863	5,785	4,410	4,776	366	8%
Permanent Supportive Housing (PSH)	13,058	12,725	14,376	14,432	14,069	-363	-3%
Rapid Re-Housing (RRH)	2,014	3,367	4,775	5,143	5,123	-20	0%
Other Permanent Housing (OPH)	438	2,434	2,814	2,393	2,513	120	5%

Award Summary

	2015	2016	2017	2018	2019	2018-19 Change	% Change
Continuum of Care (CoC)	\$87,469,903	\$86,315,343	\$88,801,836	\$97,243,257	\$108,203,952	\$10,960,695	11%
Emergency Solutions Grants (ESG)	\$19,478,119	\$19,408,550	\$22,142,699	\$19,384,204	\$20,042,283	\$658,079	3%
Youth Homelessness Demonstration Program (YHDP)	N/A	\$5,227,483	--	\$9,107,696	--	--	--