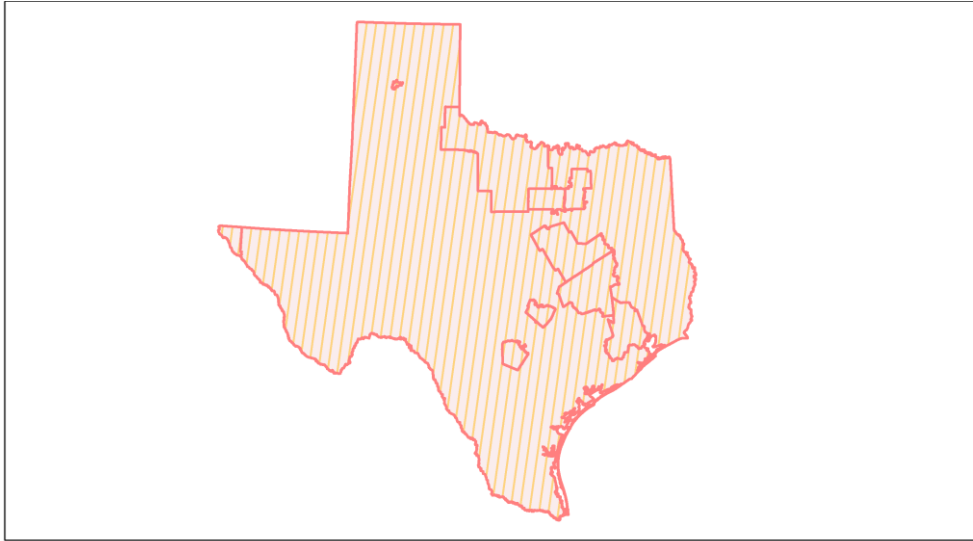
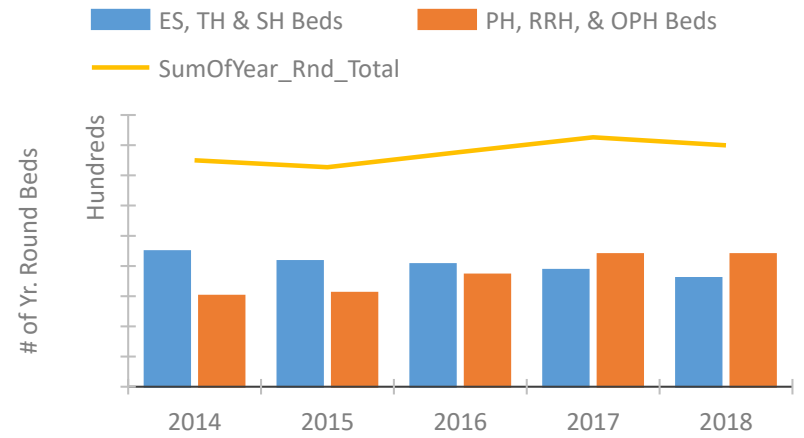


Texas Continuum of Care Performance Profile

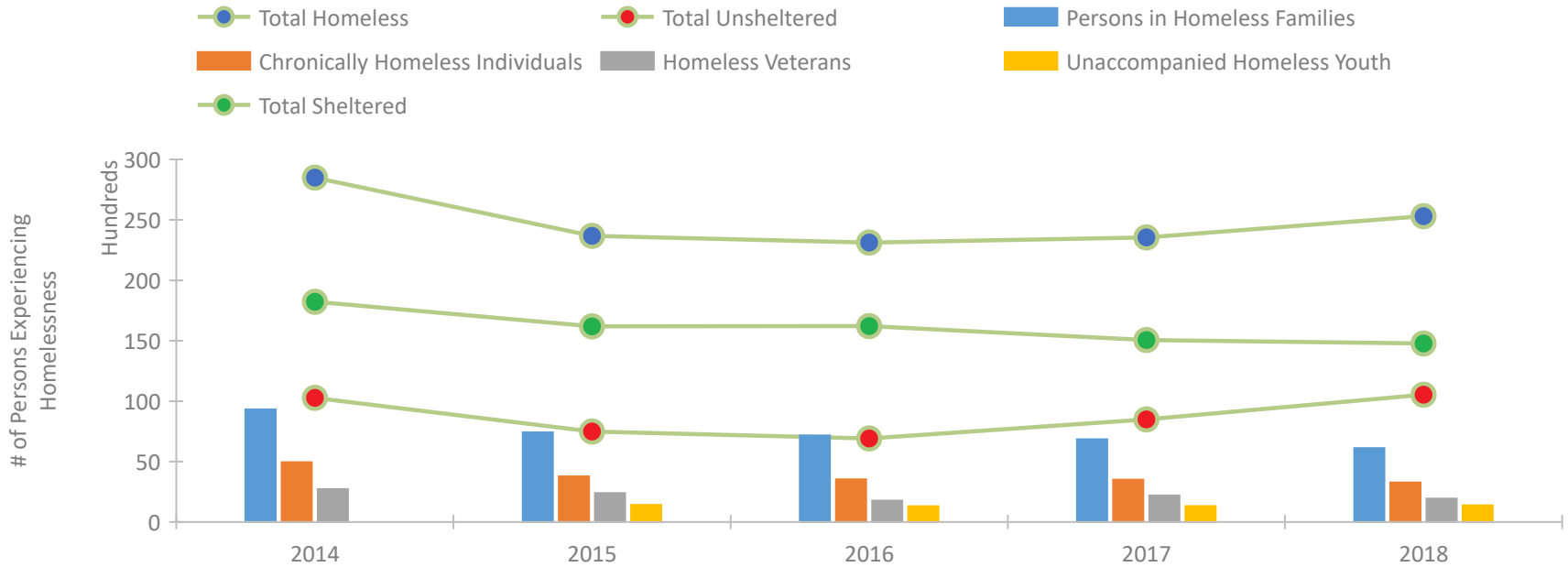


2018 CoC Boundaries 2017 CoC Boundaries

Housing Inventory Count by Program Type

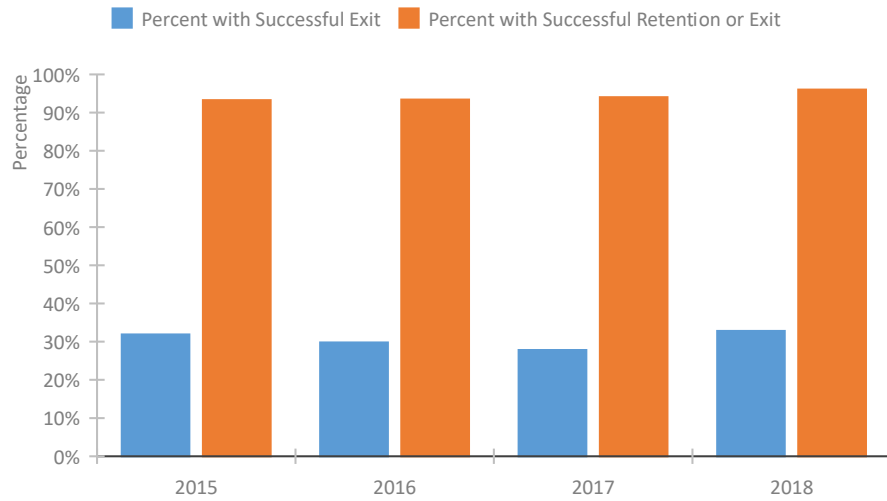


Homeless Population – Point-in-Time (PIT) Count

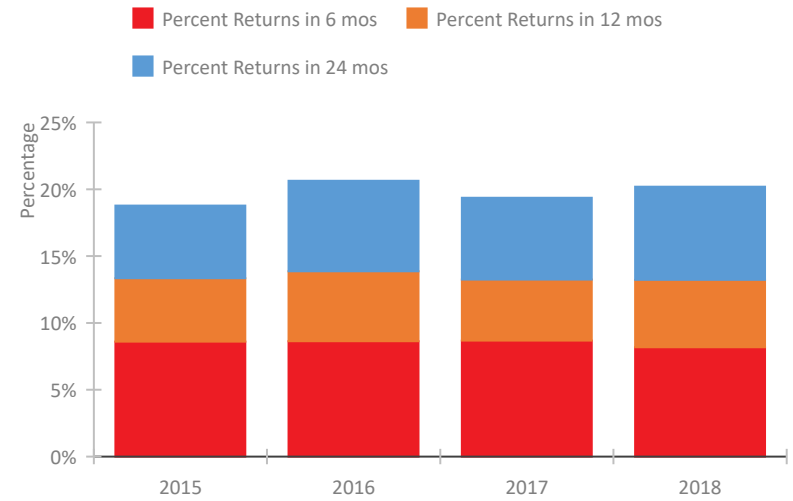


Texas Continuum of Care Performance Profile

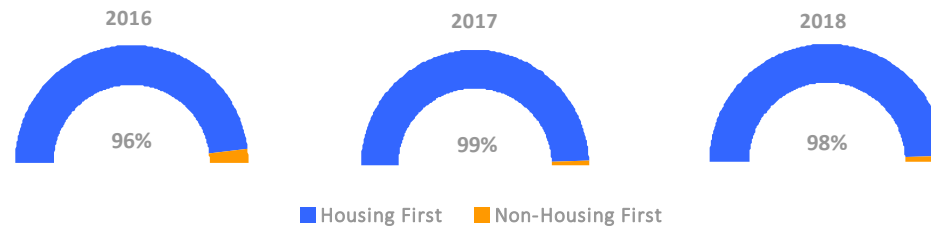
Exits to Permanent Housing by Program Type



Returns to Homelessness Over Time



Proportion of Housing First Projects by Year



Number of Projects by Year

	2016	2017	2018
Housing First Projects	195	197	205
Non-Housing First Projects	8	2	4

Data Summary: Texas

Point-In-Time Count Summary

	2014	2015	2016	2017	2018	2017-18 Change	% Change
Number of Sheltered Persons in Families	8,470	6,958	6,899	6,341	5,859	-482	-8%
Number of Unsheltered Persons in Families	848	455	264	499	252	-247	-49%
Number of Sheltered Individuals	9,487	9,028	9,181	8,595	8,795	200	2%
Number of Unsheltered Individuals	8,949	6,998	6,580	7,978	10,256	2,278	29%
Total Homeless Persons	27,754	23,439	22,924	23,413	25,162	1,749	7%
Number of Sheltered Families	2,549	2,159	2,216	1,986	1,845	-141	-7%
Number of Unsheltered Families	235	157	81	182	72	-110	-60%
Number of Total Families	2,784	2,316	2,297	2,168	1,917	-251	-12%
Sheltered Chronically Homeless Individuals	1,892	1,543	1,500	1,319	1,379	60	5%
Unsheltered Chronically Homeless Individuals	3,060	2,235	2,034	2,178	1,890	-288	-13%
Total Chronically Homeless Individuals	4,952	3,778	3,534	3,497	3,269	-228	-7%
Sheltered Veterans	1,576	1,490	1,285	1,379	1,142	-237	-17%
Unsheltered Veterans	1,142	903	483	821	793	-28	-3%
Total Veterans	2,718	2,393	1,768	2,200	1,935	-265	-12%
Sheltered Unaccompanied Youth (up to 24)	--	797	764	772	754	-18	-2%
Unsheltered Unaccompanied Youth (up to 24)	--	619	545	546	625	79	14%
Total Unaccompanied Youth (up to 24)	--	1,416	1,309	1,318	1,379	61	5%

System Performance Measures Summary

	2014	2015	2016	2017	2018	2017-18 Change	% Change
Rate People Return to Homelessness in 6 Months	N/A	8.6%	8.6%	8.7%	8.2%	-0.5%	N/A
Number of People who are Homeless for the First Time	N/A	44,800	40,605	48,402	43,322	-5,080	-10.5%
Rate People Exit from ES, SH, TH, and RRH to PH	N/A	31.9%	29.8%	27.8%	32.8%	5%	N/A
Rate People in PSH and OPH Retain or Exit to PH	N/A	93.2%	93.4%	94.0%	96.0%	2%	N/A

Housing Inventory Count Summary

	2014	2015	2016	2017	2018	2017-18 Change	% Change
Emergency Shelter (ES)	12,942	13,382	13,328	13,475	13,487	12	0%
Safe Haven (SH)	153	128	106	84	109	25	30%
Transitional Housing (TH)	9,348	7,302	6,863	5,785	4,410	-1,375	-24%
Permanent Supportive Housing (PSH)	12,209	13,058	12,725	14,376	14,432	56	0%
Rapid Re-Housing (RRH)	1,371	2,014	3,367	4,775	5,143	368	8%
Other Permanent Housing (OPH)	1,440	438	2,434	2,814	2,393	-421	-15%

Award Summary

	2014	2015	2016	2017	2018	2017-18 Change	% Change
Continuum of Care (CoC)	\$77,942,382	\$87,469,903	\$86,315,343	\$88,801,836	\$97,243,257	\$8,441,421	10%
Emergency Solutions Grants (ESG)	\$18,108,755	\$19,478,119	\$19,408,550	\$22,142,699	\$19,384,204	(\$2,758,495)	-12%
Youth Homelessness Demonstration Program (YHDP)	N/A	N/A	\$5,227,483	--	\$9,107,696	--	--