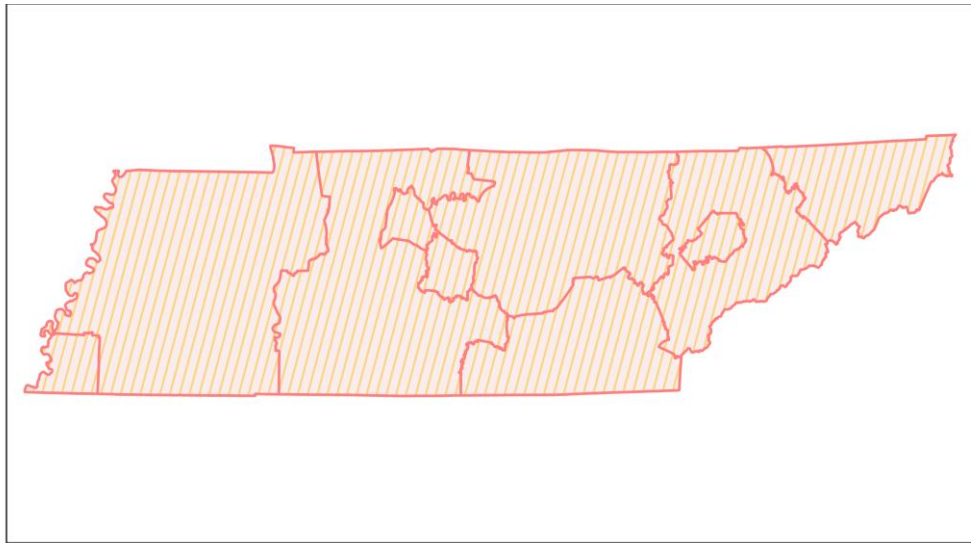
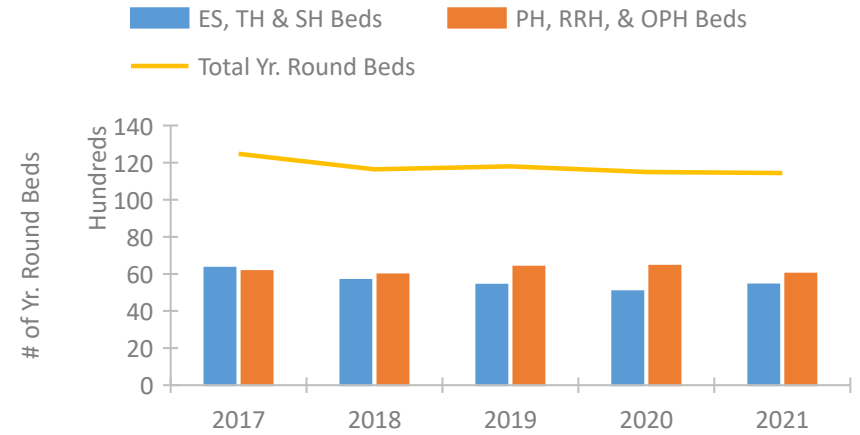


## Tennessee Continuum of Care Performance Profile

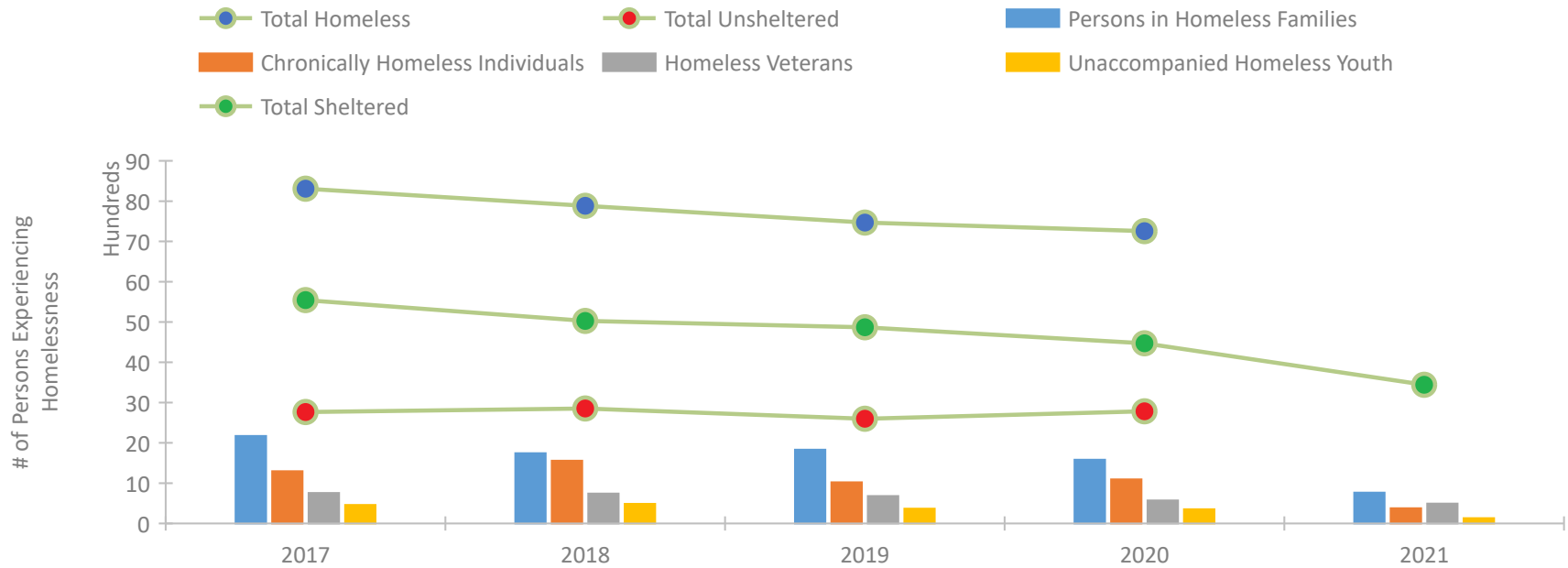


2021 CoC Boundaries 2020 CoC Boundaries

## Housing Inventory Count by Program Type



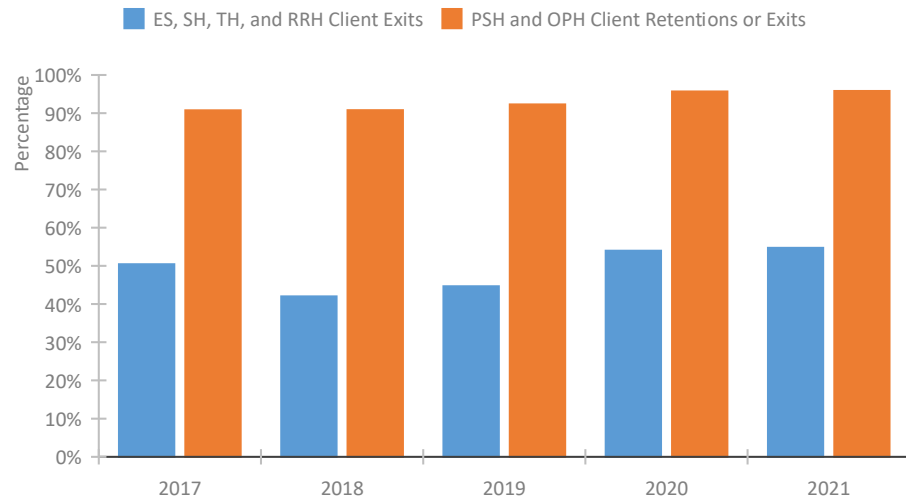
## Homeless Population – Point-in-Time (PIT) Count\*



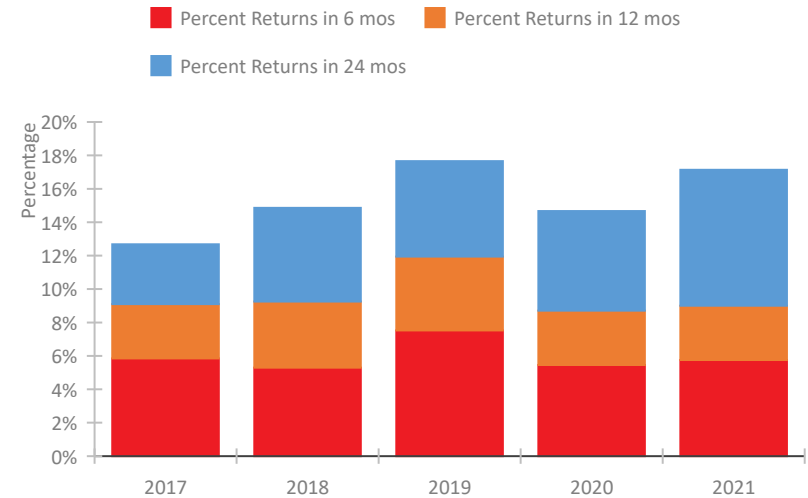
\*In 2021, HUD gave communities the option to cancel or modify the unsheltered survey portion of their counts based on the potential risk of COVID-19 transmission associated with conducting an in-person survey. As a result, HUD has excluded the unsheltered population sub-totals and all unsheltered sub-population data for this reporting period. The user is cautioned that the unsheltered and total homeless counts reported here may be missing data.

## Tennessee Continuum of Care Performance Profile

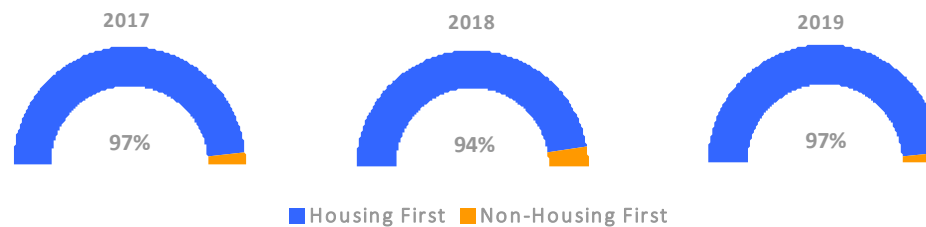
### Exits to Permanent Housing by Program Type



### Returns to Homelessness Over Time



### Proportion of Housing First Projects by Year†



### Number of Projects by Year

	2017	2018	2019
Housing First Projects	116	116	105
Non-Housing First Projects	4	7	3

†2021 Data unavailable at the time of report publication. In 2020 HUD awarded renewal projects noncompetitively, therefore no new data was collected and Housing First data remains the same from 2019 to 2020.

## Data Summary: Tennessee

### Point-In-Time Count Summary\*

	2017	2018	2019	2020	2021	2020-21 Change	% Change
Number of Sheltered Persons in Families	1,661	1,175	1,350	1,112	765	-347	-31%
Number of Unsheltered Persons in Families	511	569	480	471	0	-471	-100%
Number of Sheltered Individuals	3,883	3,853	3,519	3,360	2,678	-682	-20%
Number of Unsheltered Individuals	2,254	2,286	2,118	2,313	--	--	--
<b>Total Homeless Persons</b>	<b>8,309</b>	<b>7,883</b>	<b>7,467</b>	<b>7,256</b>	<b>3,443</b>	<b>-3,813</b>	<b>-53%</b>
Number of Sheltered Families	494	366	391	335	240	-95	-28%
Number of Unsheltered Families	161	160	167	173	--	--	--
<b>Number of Total Families</b>	<b>655</b>	<b>526</b>	<b>558</b>	<b>508</b>	<b>240</b>	<b>-268</b>	<b>-53%</b>
Sheltered Chronically Homeless Individuals	482	559	501	421	377	-44	-10%
Unsheltered Chronically Homeless Individuals	813	997	519	671	--	--	--
<b>Total Chronically Homeless Individuals</b>	<b>1,295</b>	<b>1,556</b>	<b>1,020</b>	<b>1,092</b>	<b>377</b>	<b>-715</b>	<b>-65%</b>
Sheltered Veterans	615	556	539	424	492	68	16%
Unsheltered Veterans	142	186	140	146	--	--	--
<b>Total Veterans</b>	<b>757</b>	<b>742</b>	<b>679</b>	<b>570</b>	<b>492</b>	<b>-78</b>	<b>-14%</b>
Sheltered Unaccompanied Youth (up to 24)	276	278	185	240	130	-110	-46%
Unsheltered Unaccompanied Youth (up to 24)	181	207	181	113	--	--	--
<b>Total Unaccompanied Youth (up to 24)</b>	<b>457</b>	<b>485</b>	<b>366</b>	<b>353</b>	<b>130</b>	<b>-223</b>	<b>-63%</b>

### System Performance Measures Summary

	2017	2018	2019	2020	2021	2020-21 Change	% Change
Rate People Return to Homelessness in 6 Months	5.8%	5.3%	7.5%	5.5%	5.8%	0.3%	N/A
Number of People who are Homeless for the First Time	14,334	12,323	13,225	9,903	11,868	1,965	19.8%
Rate People Exit from ES, SH, TH, and RRH to PH	50.4%	42.0%	44.7%	54.0%	54.7%	0.8%	N/A
Rate People in PSH and OPH Retain or Exit to PH	90.7%	90.8%	92.3%	95.7%	95.8%	0.2%	N/A

### Housing Inventory Count Summary

	2017	2018	2019	2020	2021	2020-21 Change	% Change
Emergency Shelter (ES)	3,959	3,786	3,306	3,423	3,868	445	13%
Safe Haven (SH)	8	13	13	5	7	2	40%
Transitional Housing (TH)	2,359	1,875	2,094	1,632	1,554	-78	-5%
Permanent Supportive Housing (PSH)	4,681	4,714	4,881	4,443	4,383	-60	-1%
Rapid Re-Housing (RRH)	1,293	1,075	1,311	1,664	1,468	-196	-12%
Other Permanent Housing (OPH)	176	180	192	331	163	-168	-51%

### Award Summary

	2017	2018	2019	2020	2021	2020-21 Change	% Change
<b>Continuum of Care (CoC)</b>	\$20,735,568	\$21,488,296	\$22,100,976	\$24,970,715	\$26,212,845	\$1,242,130	5%
<b>Emergency Solutions Grants (ESG)</b>	\$5,303,602	\$4,076,608	\$4,220,574	\$4,415,070	\$4,400,163	(\$14,907)	0%
<b>Youth Homelessness Demonstration Program (YHDP)</b>	\$3,536,071	--	\$5,978,893	--	\$2,228,208	--	--

\*In 2021, HUD gave communities the option to cancel or modify the unsheltered survey portion of their counts based on the potential risk of COVID-19 transmission associated with conducting an in-person survey. As a result, HUD has excluded the unsheltered population sub-totals and all unsheltered sub-population data for this reporting period. The user is cautioned that the unsheltered and total homeless counts reported here may be missing data.