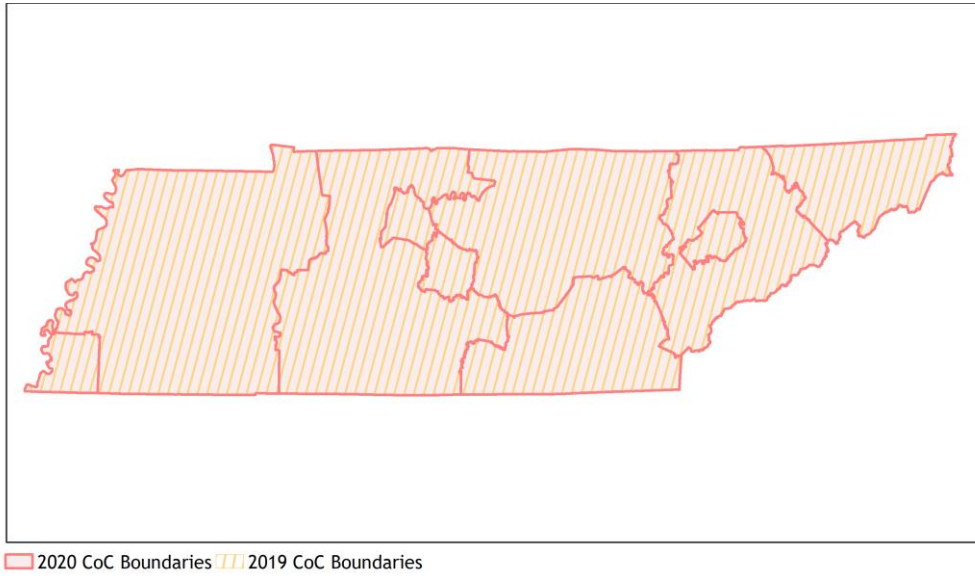
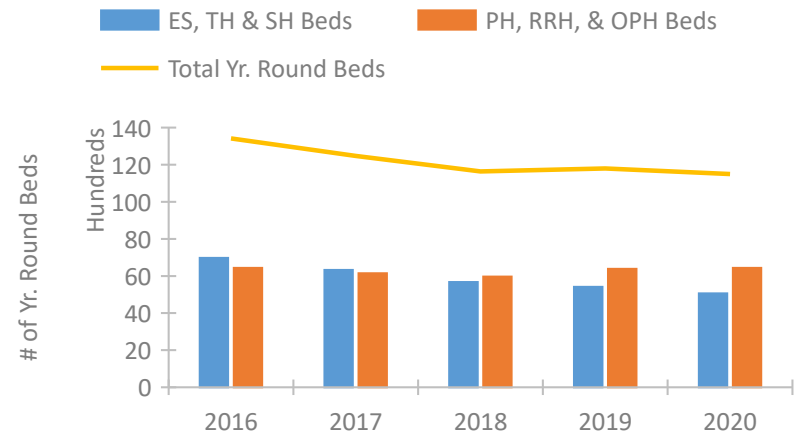


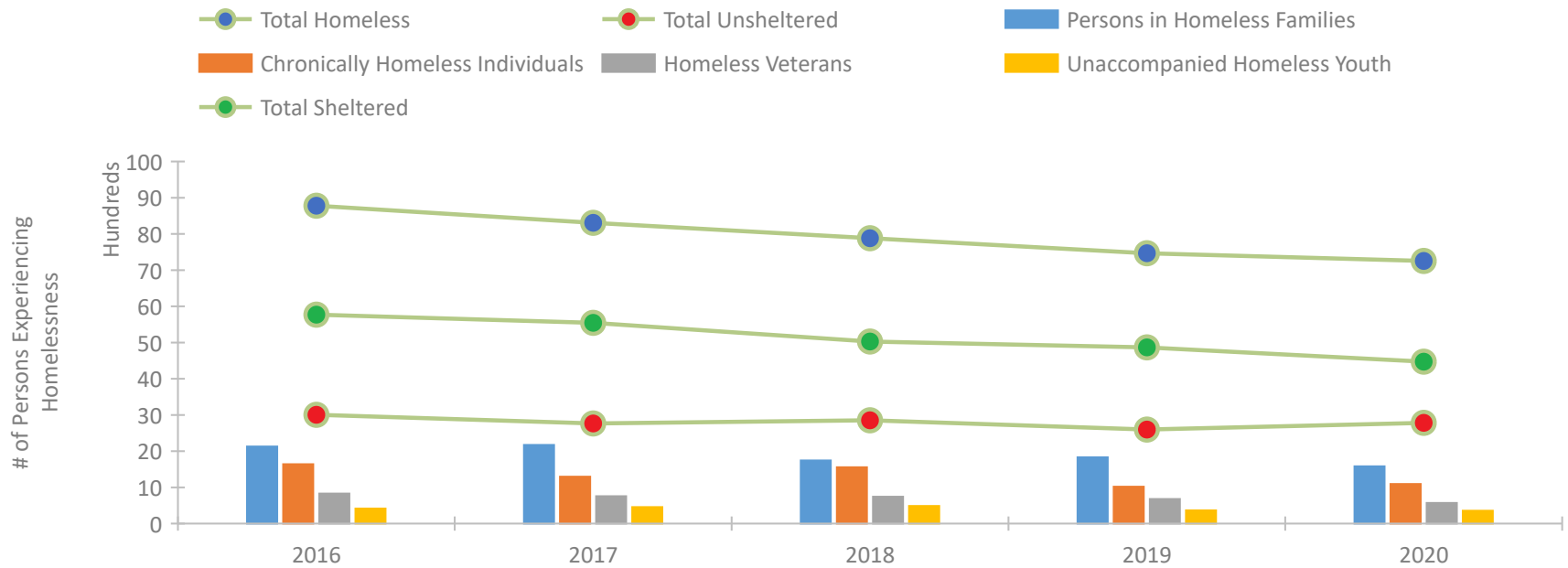
Tennessee Continuum of Care Performance Profile



Housing Inventory Count by Program Type

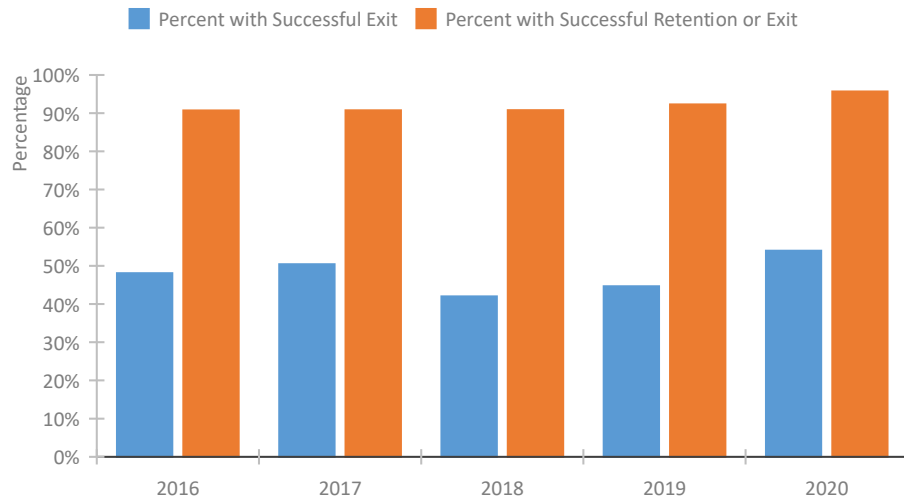


Homeless Population – Point-in-Time (PIT) Count

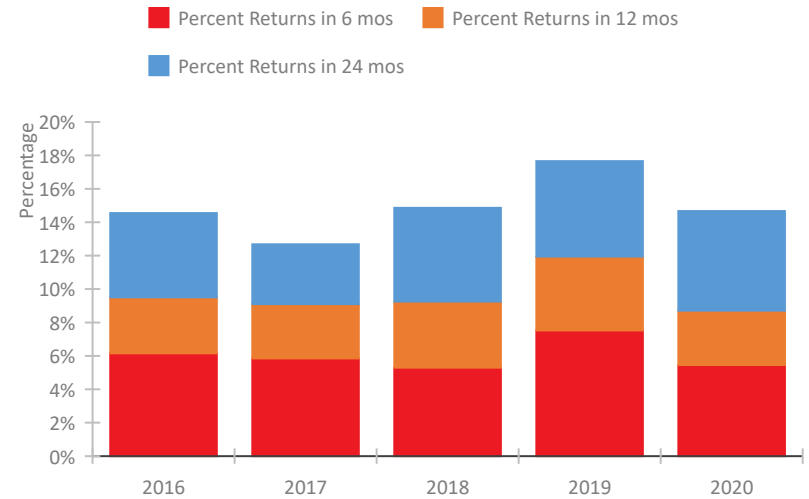


Tennessee Continuum of Care Performance Profile

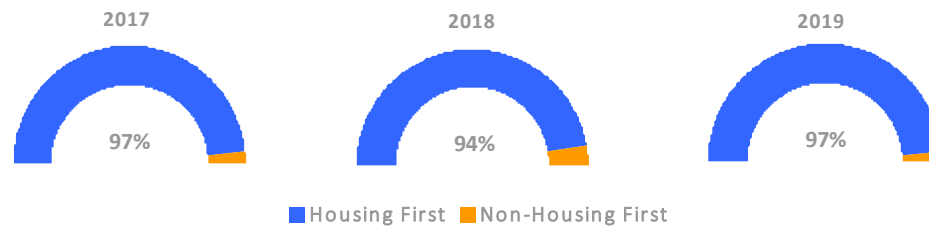
Exits to Permanent Housing by Program Type



Returns to Homelessness Over Time



Proportion of Housing First Projects by Year*



Number of Projects by Year			
	2017	2018	2019
Housing First Projects	116	116	105
Non-Housing First Projects	4	7	3

*In 2020 HUD awarded renewal projects noncompetitively, therefore no new data was collected and Housing First data remains the same from 2019 to 2020.

Data Summary: Tennessee

Point-In-Time Count Summary

	2016	2017	2018	2019	2020	2019-20 Change	% Change
Number of Sheltered Persons in Families	1,571	1,661	1,175	1,350	1,112	-238	-18%
Number of Unsheltered Persons in Families	556	511	569	480	471	-9	-2%
Number of Sheltered Individuals	4,202	3,883	3,853	3,519	3,360	-159	-5%
Number of Unsheltered Individuals	2,450	2,254	2,286	2,118	2,313	195	9%
Total Homeless Persons	8,779	8,309	7,883	7,467	7,256	-211	-3%
Number of Sheltered Families	534	494	366	391	335	-56	-14%
Number of Unsheltered Families	176	161	160	167	173	6	4%
Number of Total Families	710	655	526	558	508	-50	-9%
Sheltered Chronically Homeless Individuals	613	482	559	501	421	-80	-16%
Unsheltered Chronically Homeless Individuals	1,027	813	997	519	671	152	29%
Total Chronically Homeless Individuals	1,640	1,295	1,556	1,020	1,092	72	7%
Sheltered Veterans	654	615	556	539	424	-115	-21%
Unsheltered Veterans	177	142	186	140	146	6	4%
Total Veterans	831	757	742	679	570	-109	-16%
Sheltered Unaccompanied Youth (up to 24)	249	276	278	185	240	55	30%
Unsheltered Unaccompanied Youth (up to 24)	167	181	207	181	113	-68	-38%
Total Unaccompanied Youth (up to 24)	416	457	485	366	353	-13	-4%

System Performance Measures Summary

	2016	2017	2018	2019	2020	2019-20 Change	% Change
Rate People Return to Homelessness in 6 Months	6.2%	5.8%	5.3%	7.5%	5.5%	-2.1%	N/A
Number of People who are Homeless for the First Time	15,528	14,334	12,323	13,225	9,903	-3,322	-25.1%
Rate People Exit from ES, SH, TH, and RRH to PH	48.1%	50.4%	42.0%	44.7%	54.0%	9.3%	N/A
Rate People in PSH and OPH Retain or Exit to PH	90.7%	90.7%	90.8%	92.3%	95.7%	3.4%	N/A

Housing Inventory Count Summary

	2016	2017	2018	2019	2020	2019-20 Change	% Change
Emergency Shelter (ES)	4,319	3,959	3,786	3,306	3,423	117	4%
Safe Haven (SH)	8	8	13	13	5	-8	-62%
Transitional Housing (TH)	2,652	2,359	1,875	2,094	1,632	-462	-22%
Permanent Supportive Housing (PSH)	5,002	4,681	4,714	4,881	4,443	-438	-9%
Rapid Re-Housing (RRH)	1,394	1,293	1,075	1,311	1,664	353	27%
Other Permanent Housing (OPH)	42	176	180	192	331	139	72%

Award Summary

	2016	2017	2018	2019	2020	2019-20 Change	% Change
Continuum of Care (CoC)	\$20,611,110	\$20,735,568	\$21,488,296	\$22,100,976	\$24,970,715	\$2,869,739	13%
Emergency Solutions Grants (ESG)	\$4,059,664	\$5,303,602	\$4,076,608	\$4,220,574	\$4,415,070	\$194,496	5%
Youth Homelessness Demonstration Program (YHDP)	--	\$3,536,071	--	\$5,978,893	--	--	--