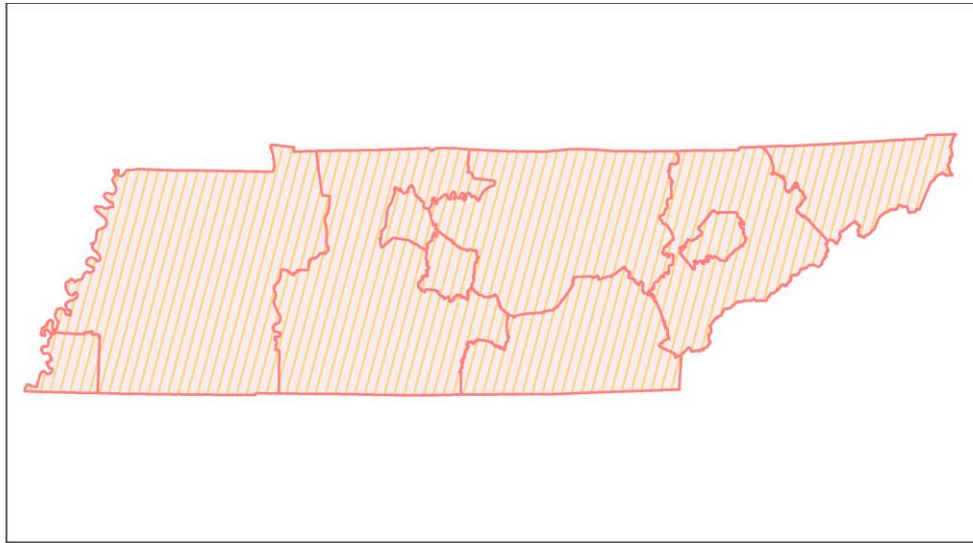
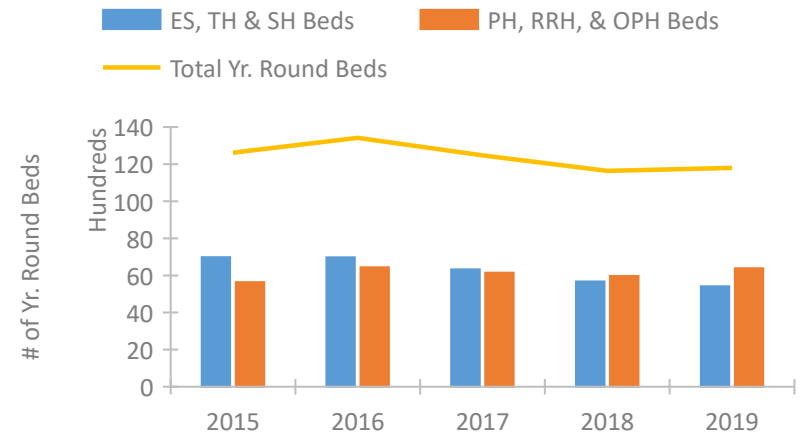


## Tennessee Continuum of Care Performance Profile

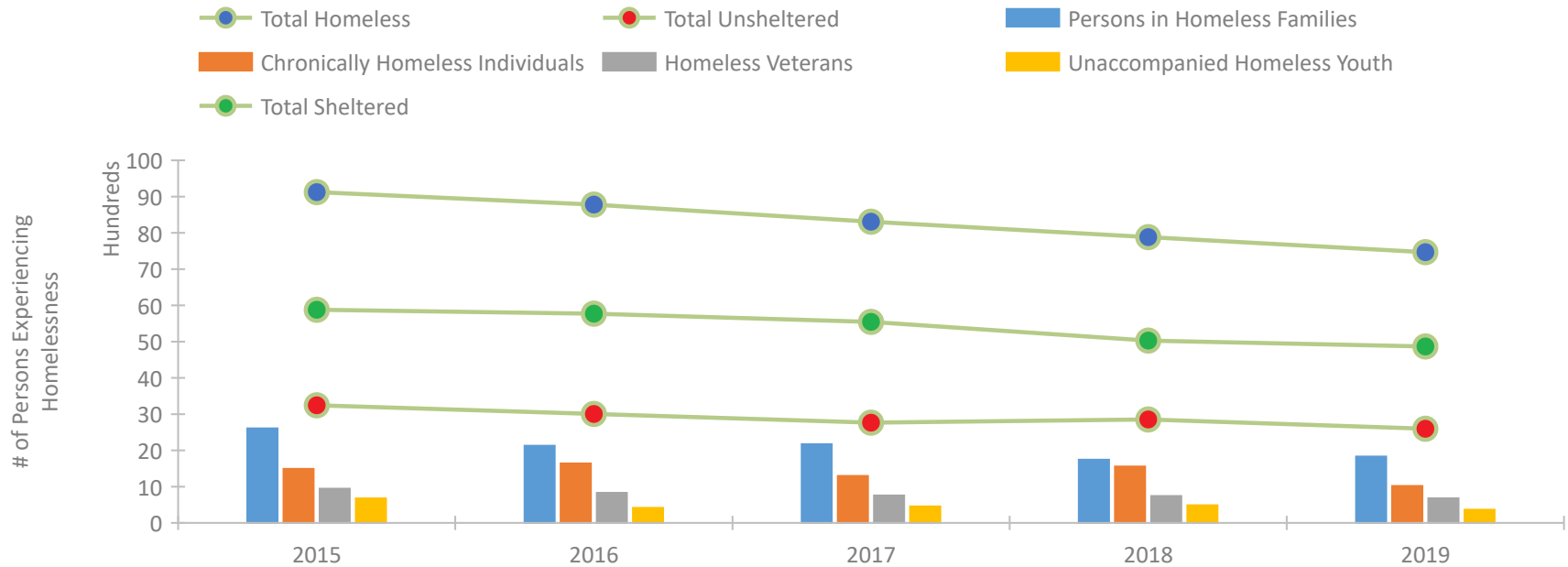


2019 CoC Boundaries
  2018 CoC Boundaries

### Housing Inventory Count by Program Type

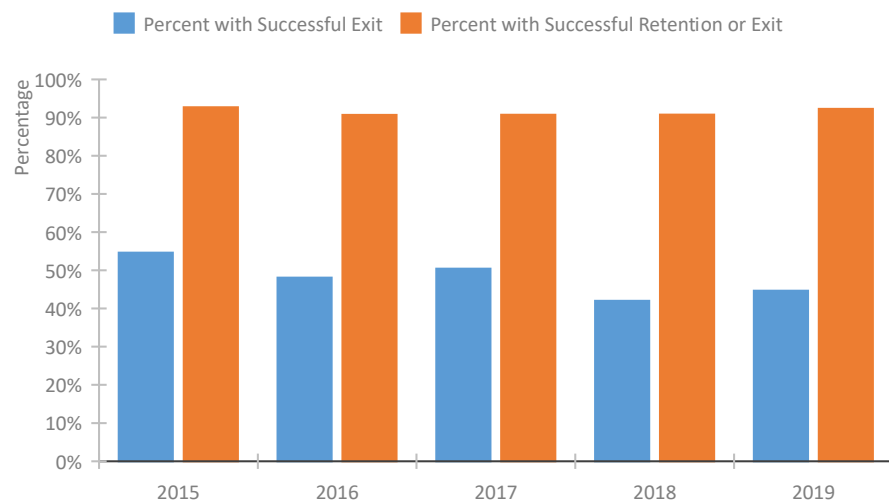


### Homeless Population – Point-in-Time (PIT) Count

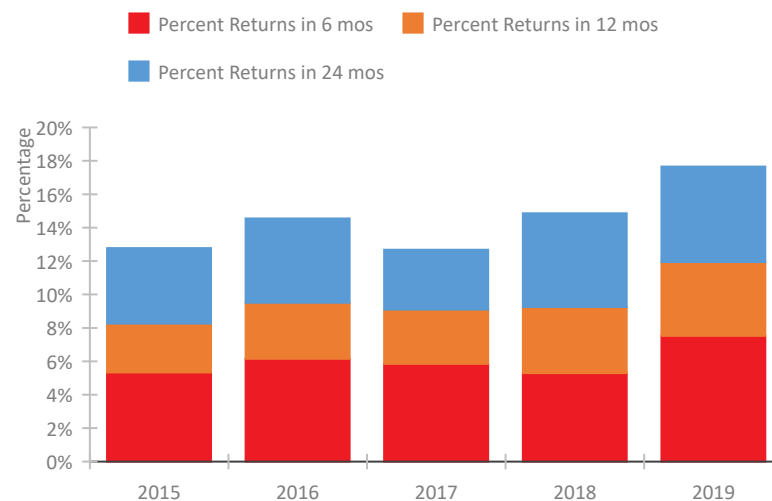


## Tennessee Continuum of Care Performance Profile

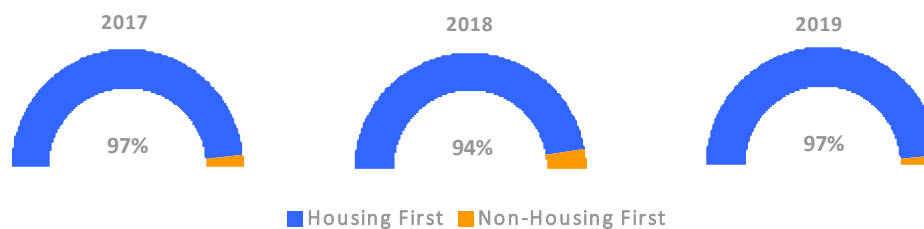
### Exits to Permanent Housing by Program Type



### Returns to Homelessness Over Time



### Proportion of Housing First Projects by Year



### Number of Projects by Year

	2017	2018	2019
Housing First Projects	116	116	105
Non-Housing First Projects	4	7	3

## Data Summary: Tennessee

### Point-In-Time Count Summary

	2015	2016	2017	2018	2019	2018-19 Change	% Change
Number of Sheltered Persons in Families	1,804	1,571	1,661	1,175	1,350	175	15%
Number of Unsheltered Persons in Families	803	556	511	569	480	-89	-16%
Number of Sheltered Individuals	4,075	4,202	3,883	3,853	3,519	-334	-9%
Number of Unsheltered Individuals	2,441	2,450	2,254	2,286	2,118	-168	-7%
<b>Total Homeless Persons</b>	<b>9,123</b>	<b>8,779</b>	<b>8,309</b>	<b>7,883</b>	<b>7,467</b>	<b>-416</b>	<b>-5%</b>
Number of Sheltered Families	578	534	494	366	391	25	7%
Number of Unsheltered Families	291	176	161	160	167	7	4%
<b>Number of Total Families</b>	<b>869</b>	<b>710</b>	<b>655</b>	<b>526</b>	<b>558</b>	<b>32</b>	<b>6%</b>
Sheltered Chronically Homeless Individuals	648	613	482	559	501	-58	-10%
Unsheltered Chronically Homeless Individuals	844	1,027	813	997	519	-478	-48%
<b>Total Chronically Homeless Individuals</b>	<b>1,492</b>	<b>1,640</b>	<b>1,295</b>	<b>1,556</b>	<b>1,020</b>	<b>-536</b>	<b>-34%</b>
Sheltered Veterans	756	654	615	556	539	-17	-3%
Unsheltered Veterans	189	177	142	186	140	-46	-25%
<b>Total Veterans</b>	<b>945</b>	<b>831</b>	<b>757</b>	<b>742</b>	<b>679</b>	<b>-63</b>	<b>-8%</b>
Sheltered Unaccompanied Youth (up to 24)	454	249	276	278	185	-93	-33%
Unsheltered Unaccompanied Youth (up to 24)	219	167	181	207	181	-26	-13%
<b>Total Unaccompanied Youth (up to 24)</b>	<b>673</b>	<b>416</b>	<b>457</b>	<b>485</b>	<b>366</b>	<b>-119</b>	<b>-25%</b>

### System Performance Measures Summary

	2015	2016	2017	2018	2019	2018-19 Change	% Change
Rate People Return to Homelessness in 6 Months	5.3%	6.2%	5.8%	5.3%	7.5%	2.2%	N/A
Number of People who are Homeless for the First Time	13,822	15,528	14,334	12,323	13,225	902	7.3%
Rate People Exit from ES, SH, TH, and RRH to PH	54.6%	48.1%	50.4%	42.0%	44.7%	2.6%	N/A
Rate People in PSH and OPH Retain or Exit to PH	92.7%	90.7%	90.7%	90.8%	92.3%	1.5%	N/A

### Housing Inventory Count Summary

	2015	2016	2017	2018	2019	2018-19 Change	% Change
Emergency Shelter (ES)	4,237	4,319	3,959	3,786	3,306	-480	-13%
Safe Haven (SH)	16	8	8	13	13	0	0%
Transitional Housing (TH)	2,728	2,652	2,359	1,875	2,094	219	12%
Permanent Supportive Housing (PSH)	4,800	5,002	4,681	4,714	4,881	167	4%
Rapid Re-Housing (RRH)	740	1,394	1,293	1,075	1,311	236	22%
Other Permanent Housing (OPH)	99	42	176	180	192	12	7%

### Award Summary

	2015	2016	2017	2018	2019	2018-19 Change	% Change
<b>Continuum of Care (CoC)</b>	\$20,484,943	\$20,611,110	\$20,735,568	\$21,488,296	\$22,100,976	\$612,680	3%
<b>Emergency Solutions Grants (ESG)</b>	\$4,085,830	\$4,059,664	\$5,303,602	\$4,076,608	\$4,220,574	\$143,966	4%
<b>Youth Homelessness Demonstration Program (YHDP)</b>	N/A	--	\$3,536,071	--	--	--	--