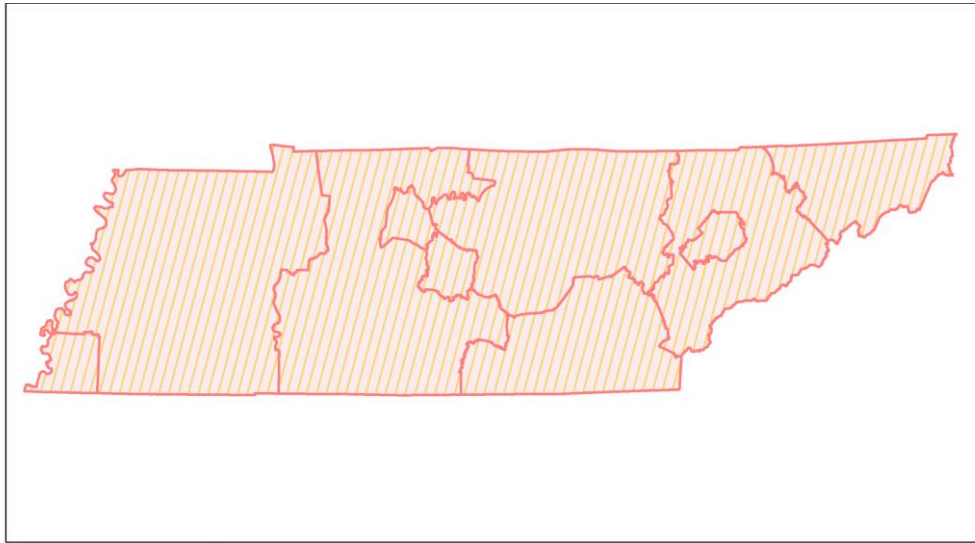
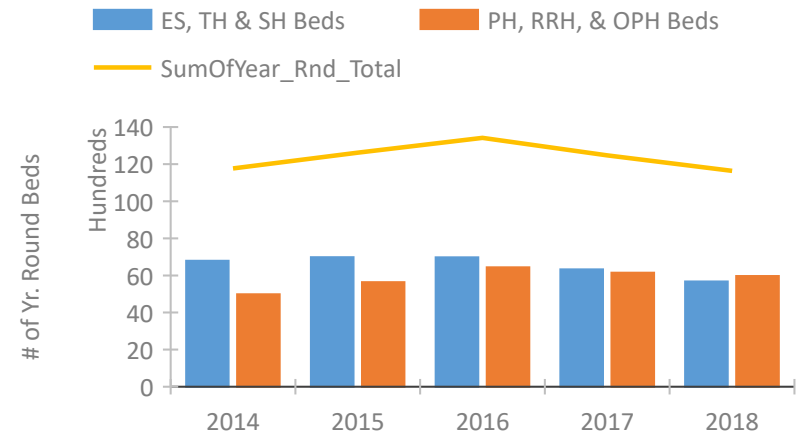


Tennessee Continuum of Care Performance Profile

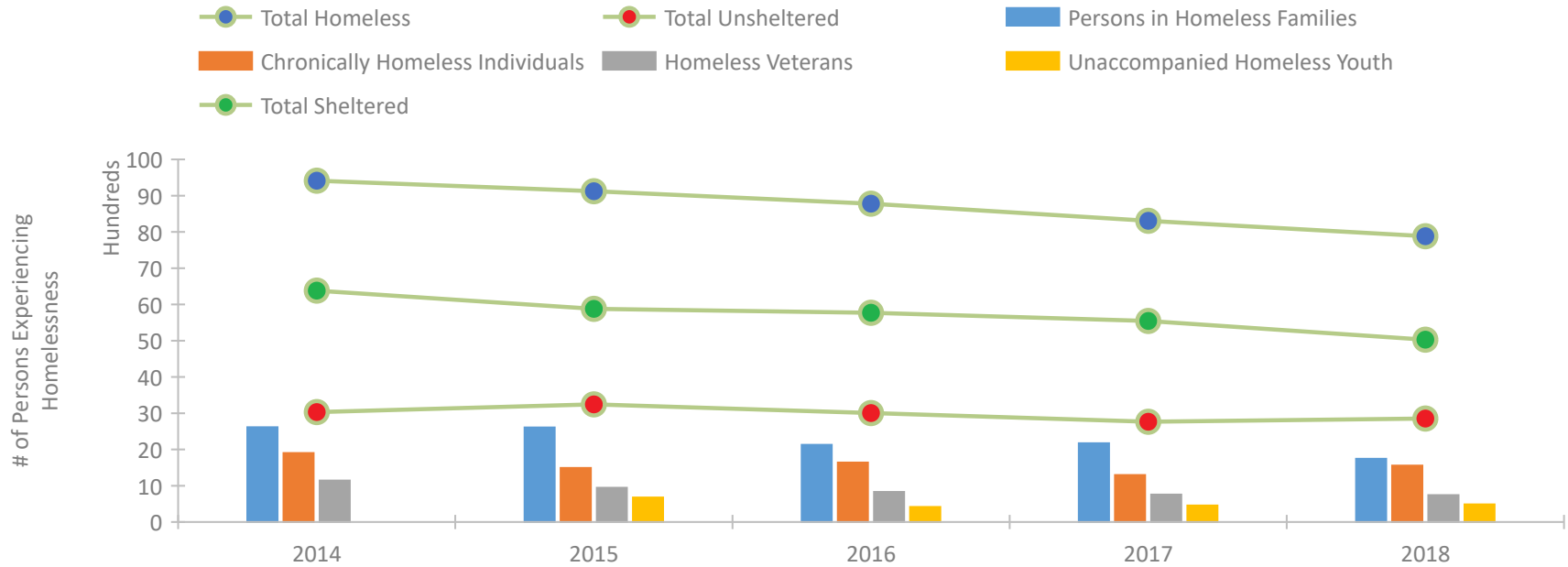


2018 CoC Boundaries 2017 CoC Boundaries

Housing Inventory Count by Program Type



Homeless Population – Point-in-Time (PIT) Count

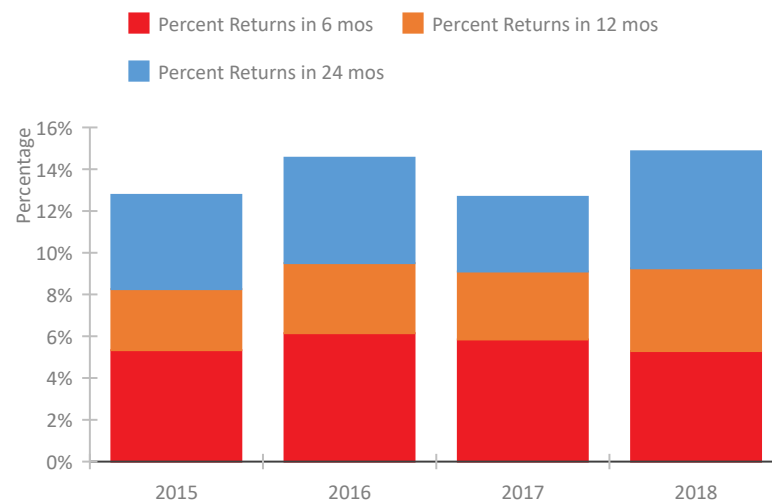


Tennessee Continuum of Care Performance Profile

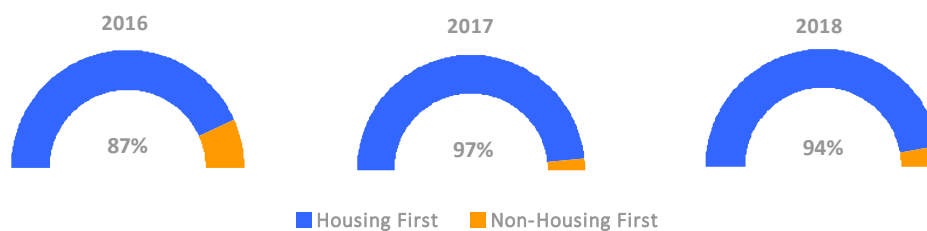
Exits to Permanent Housing by Program Type



Returns to Homelessness Over Time



Proportion of Housing First Projects by Year



Number of Projects by Year

	2016	2017	2018
Housing First Projects	106	116	116
Non-Housing First Projects	16	4	7

Data Summary: Tennessee

Point-In-Time Count Summary

	2014	2015	2016	2017	2018	2017-18 Change	% Change
Number of Sheltered Persons in Families	1,690	1,804	1,571	1,661	1,175	-486	-29%
Number of Unsheltered Persons in Families	925	803	556	511	569	58	11%
Number of Sheltered Individuals	4,687	4,047	4,180	3,866	3,811	-55	-1%
Number of Unsheltered Individuals	2,103	2,438	2,446	2,248	2,279	31	1%
Total Homeless Persons	9,405	9,092	8,753	8,286	7,834	-452	-5%
Number of Sheltered Families	498	578	534	494	366	-128	-26%
Number of Unsheltered Families	306	291	176	161	160	-1	-1%
Number of Total Families	804	869	710	655	526	-129	-20%
Sheltered Chronically Homeless Individuals	1,169	648	613	482	559	77	16%
Unsheltered Chronically Homeless Individuals	735	844	1,027	813	997	184	23%
Total Chronically Homeless Individuals	1,904	1,492	1,640	1,295	1,556	261	20%
Sheltered Veterans	920	756	654	615	556	-59	-10%
Unsheltered Veterans	222	189	177	142	186	44	31%
Total Veterans	1,142	945	831	757	742	-15	-2%
Sheltered Unaccompanied Youth (up to 24)	--	454	249	276	278	2	1%
Unsheltered Unaccompanied Youth (up to 24)	--	219	167	181	207	26	14%
Total Unaccompanied Youth (up to 24)	--	673	416	457	485	28	6%

System Performance Measures Summary

	2014	2015	2016	2017	2018	2017-18 Change	% Change
Rate People Return to Homelessness in 6 Months	N/A	5.3%	6.2%	5.8%	5.3%	-0.6%	N/A
Number of People who are Homeless for the First Time	N/A	13,822	15,528	14,334	12,323	-2,011	-14%
Rate People Exit from ES, SH, TH, and RRH to PH	N/A	54.6%	48.1%	50.4%	42.0%	-8.4%	N/A
Rate People in PSH and OPH Retain or Exit to PH	N/A	92.7%	90.7%	90.7%	90.8%	0%	N/A

Housing Inventory Count Summary

	2014	2015	2016	2017	2018	2017-18 Change	% Change
Emergency Shelter (ES)	3,628	4,237	4,319	3,959	3,786	-173	-4%
Safe Haven (SH)	24	16	8	8	13	5	62%
Transitional Housing (TH)	3,139	2,728	2,652	2,359	1,875	-484	-21%
Permanent Supportive Housing (PSH)	4,563	4,800	5,002	4,681	4,714	33	1%
Rapid Re-Housing (RRH)	320	740	1,394	1,293	1,075	-218	-17%
Other Permanent Housing (OPH)	97	99	42	176	180	4	2%

Award Summary

	2014	2015	2016	2017	2018	2017-18 Change	% Change
Continuum of Care (CoC)	\$21,574,617	\$20,484,943	\$20,611,110	\$20,735,568	\$21,488,296	\$752,728	4%
Emergency Solutions Grants (ESG)	\$3,254,471	\$4,085,830	\$4,059,664	\$5,303,602	\$4,076,608	(\$1,226,994)	-23%
Youth Homelessness Demonstration Program (YHDP)	N/A	N/A	--	\$3,536,071	--	--	--