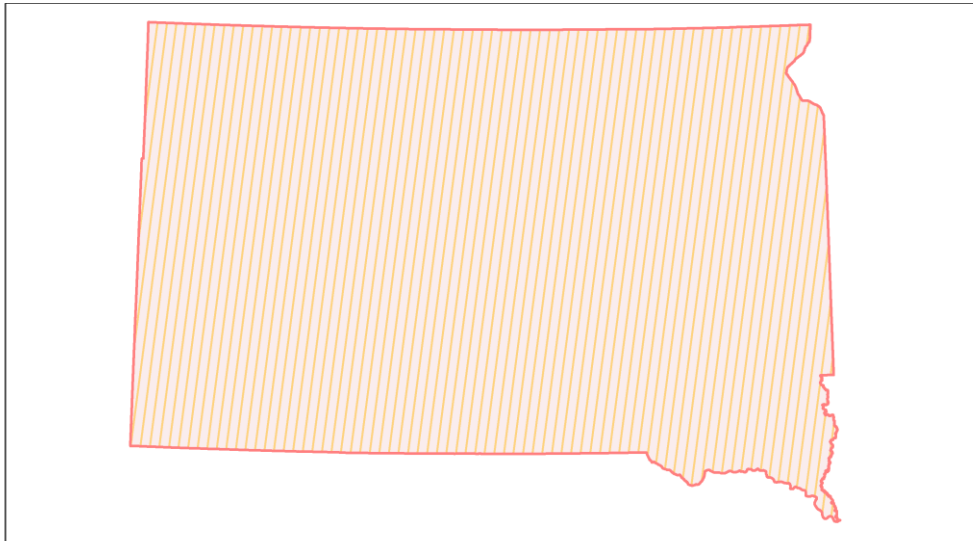
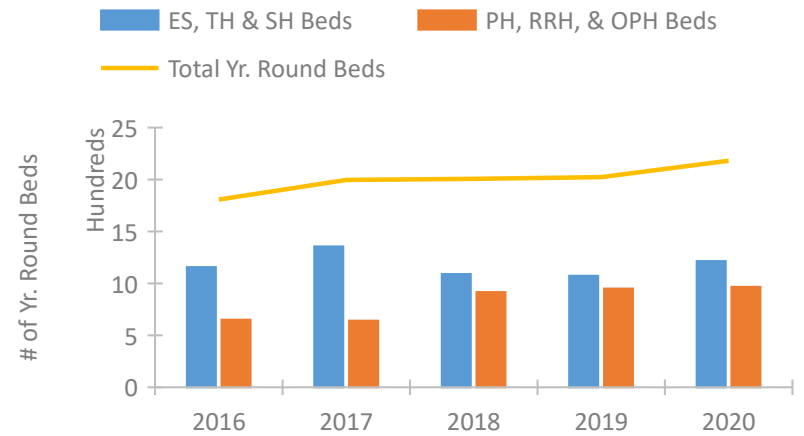


## South Dakota Continuum of Care Performance Profile

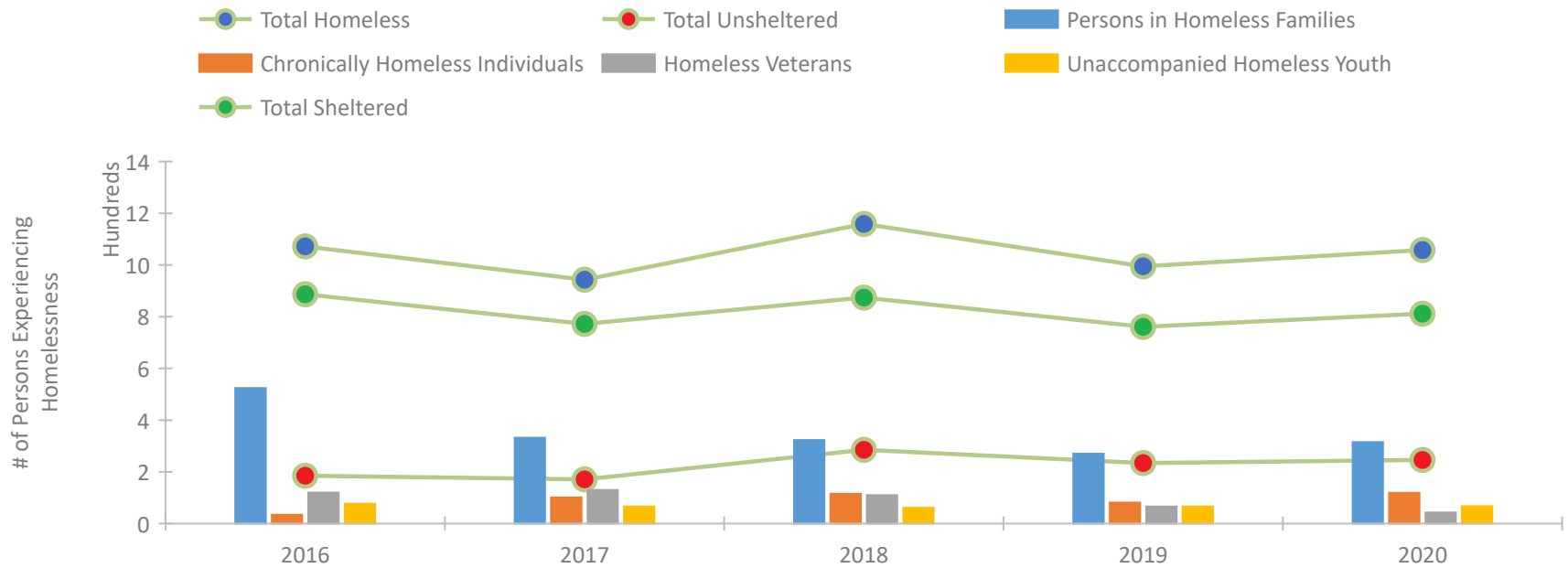


2020 CoC Boundaries 2019 CoC Boundaries

### Housing Inventory Count by Program Type

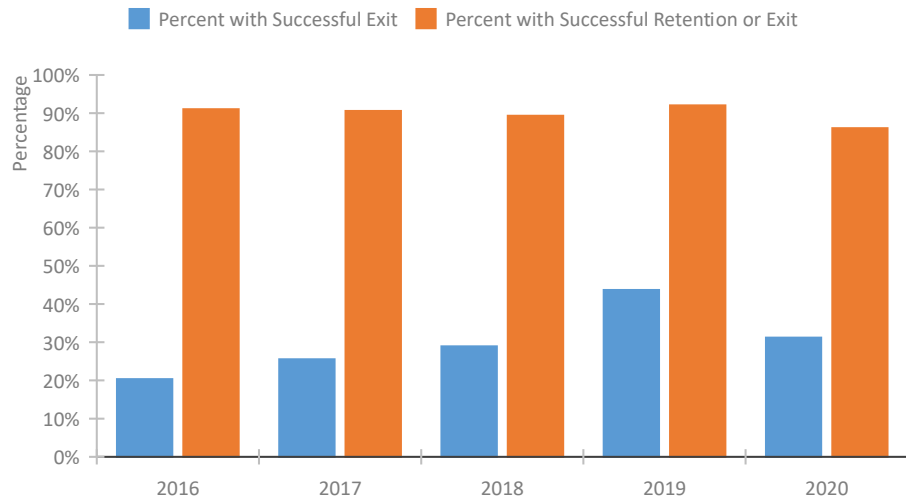


### Homeless Population – Point-in-Time (PIT) Count

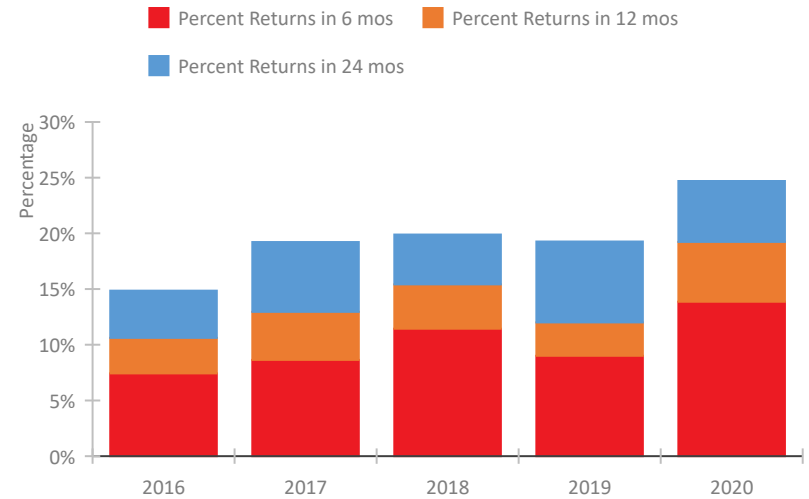


## South Dakota Continuum of Care Performance Profile

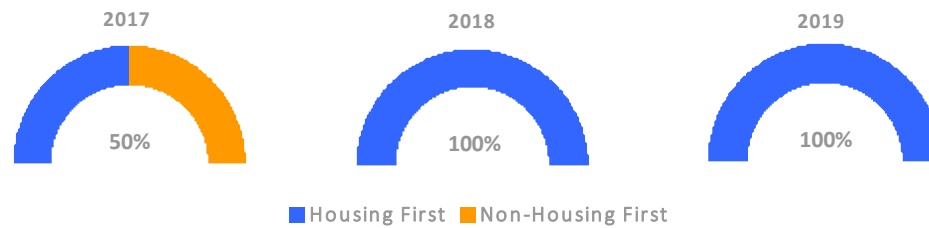
### Exits to Permanent Housing by Program Type



### Returns to Homelessness Over Time



### Proportion of Housing First Projects by Year\*



| Number of Projects by Year |      |      |      |
|----------------------------|------|------|------|
|                            | 2017 | 2018 | 2019 |
| Housing First Projects     | 4    | 9    | 9    |
| Non-Housing First Projects | 4    | 0    | 0    |

\*In 2020 HUD awarded renewal projects noncompetitively, therefore no new data was collected and Housing First data remains the same from 2019 to 2020.

## Data Summary: South Dakota

### Point-In-Time Count Summary

|   | 2016         | 2017       | 2018         | 2019       | 2020         | 2019-20 Change | % Change    |
|---|--------------|------------|--------------|------------|--------------|----------------|-------------|
| Number of Sheltered Persons in Families       | 441          | 320        | 276          | 257        | 299          | 42             | 16%         |
| Number of Unsheltered Persons in Families     | 83           | 12         | 47           | 13         | 16           | 3              | 23%         |
| Number of Sheltered Individuals               | 446          | 452        | 598          | 504        | 513          | 9              | 2%          |
| Number of Unsheltered Individuals             | 102          | 159        | 238          | 221        | 230          | 9              | 4%          |
| <b>Total Homeless Persons</b>                 | <b>1,072</b> | <b>943</b> | <b>1,159</b> | <b>995</b> | <b>1,058</b> | <b>63</b>      | <b>6%</b>   |
| Number of Sheltered Families                  | 143          | 121        | 91           | 72         | 89           | 17             | 24%         |
| Number of Unsheltered Families                | 27           | 3          | 14           | 4          | 4            | 0              | -0%         |
| <b>Number of Total Families</b>               | <b>170</b>   | <b>124</b> | <b>105</b>   | <b>76</b>  | <b>93</b>    | <b>17</b>      | <b>22%</b>  |
| Sheltered Chronically Homeless Individuals    | 30           | 81         | 67           | 39         | 79           | 40             | 103%        |
| Unsheltered Chronically Homeless Individuals  | 4            | 20         | 48           | 42         | 40           | -2             | -5%         |
| <b>Total Chronically Homeless Individuals</b> | <b>34</b>    | <b>101</b> | <b>115</b>   | <b>81</b>  | <b>119</b>   | <b>38</b>      | <b>47%</b>  |
| Sheltered Veterans                            | 109          | 123        | 89           | 55         | 37           | -18            | -33%        |
| Unsheltered Veterans                          | 11           | 7          | 21           | 11         | 6            | -5             | -45%        |
| <b>Total Veterans</b>                         | <b>120</b>   | <b>130</b> | <b>110</b>   | <b>66</b>  | <b>43</b>    | <b>-23</b>     | <b>-35%</b> |
| Sheltered Unaccompanied Youth (up to 24)      | 69           | 53         | 42           | 52         | 49           | -3             | -6%         |
| Unsheltered Unaccompanied Youth (up to 24)    | 8            | 13         | 19           | 14         | 18           | 4              | 29%         |
| <b>Total Unaccompanied Youth (up to 24)</b>   | <b>77</b>    | <b>66</b>  | <b>61</b>    | <b>66</b>  | <b>67</b>    | <b>1</b>       | <b>2%</b>   |

### System Performance Measures Summary

|  | 2016  | 2017  | 2018  | 2019  | 2020  | 2019-20 Change | % Change |
|--|-------|-------|-------|-------|-------|----------------|----------|
| Rate People Return to Homelessness in 6 Months       | 7.4%  | 8.6%  | 11.4% | 9.0%  | 13.9% | 4.9%           | N/A      |
| Number of People who are Homeless for the First Time | 1,958 | 1,972 | 2,008 | 1,743 | 1,720 | -23            | -1.3%    |
| Rate People Exit from ES, SH, TH, and RRH to PH      | 20.3% | 25.5% | 28.9% | 43.7% | 31.2% | -12.5%         | N/A      |
| Rate People in PSH and OPH Retain or Exit to PH      | 91.0% | 90.6% | 89.3% | 92.0% | 86.1% | -6%            | N/A      |

### Housing Inventory Count Summary

|                                    | 2016 | 2017 | 2018 | 2019 | 2020  | 2019-20 Change | % Change |
|------------------------------------|------|------|------|------|-------|----------------|----------|
| Emergency Shelter (ES)             | 813  | 966  | 990  | 939  | 1,123 | 184            | 20%      |
| Transitional Housing (TH)          | 344  | 390  | 100  | 135  | 92    | -43            | -32%     |
| Permanent Supportive Housing (PSH) | 618  | 459  | 519  | 602  | 621   | 19             | 3%       |
| Rapid Re-Housing (RRH)             | 33   | 182  | 373  | 323  | 321   | -2             | -1%      |
| Other Permanent Housing (OPH)      | --   | --   | 25   | 25   | 25    | 0              | -0%      |

### Award Summary

|  | 2016        | 2017        | 2018        | 2019        | 2020        | 2019-20 Change | % Change |
|--|-------------|-------------|-------------|-------------|-------------|----------------|----------|
| <b>Continuum of Care (CoC)</b>                         | \$1,264,095 | \$1,294,469 | \$1,316,523 | \$1,402,574 | \$1,413,545 | \$10,971       | 1%       |
| <b>Emergency Solutions Grants (ESG)</b>                | \$574,427   | \$749,606   | \$582,097   | \$607,391   | \$637,969   | \$30,578       | 5%       |
| <b>Youth Homelessness Demonstration Program (YHDP)</b> | --          | --          | --          | \$2,981,291 | --          | --             | --       |