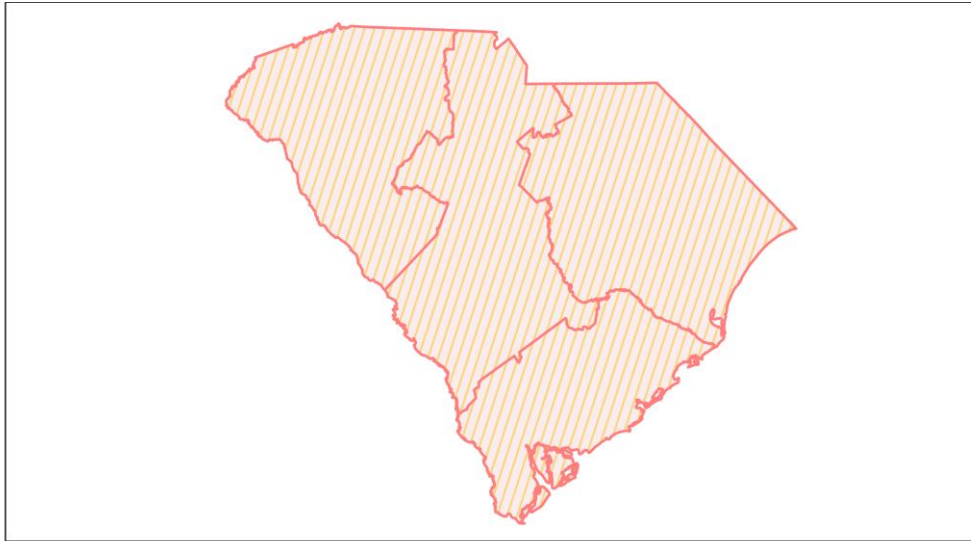
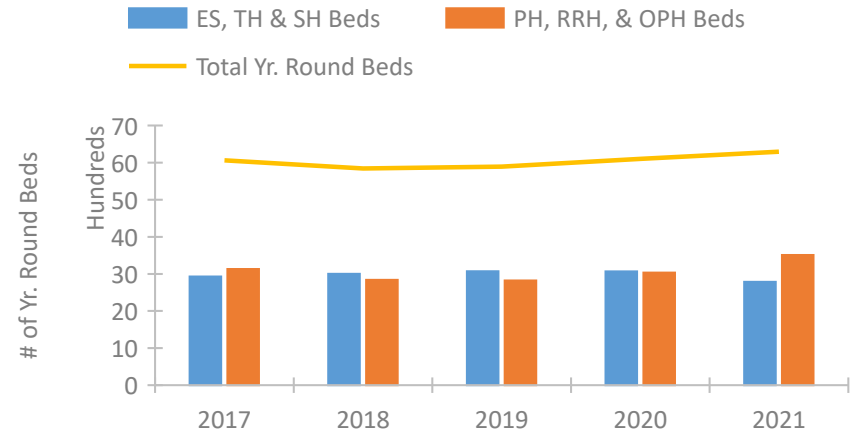


South Carolina Continuum of Care Performance Profile

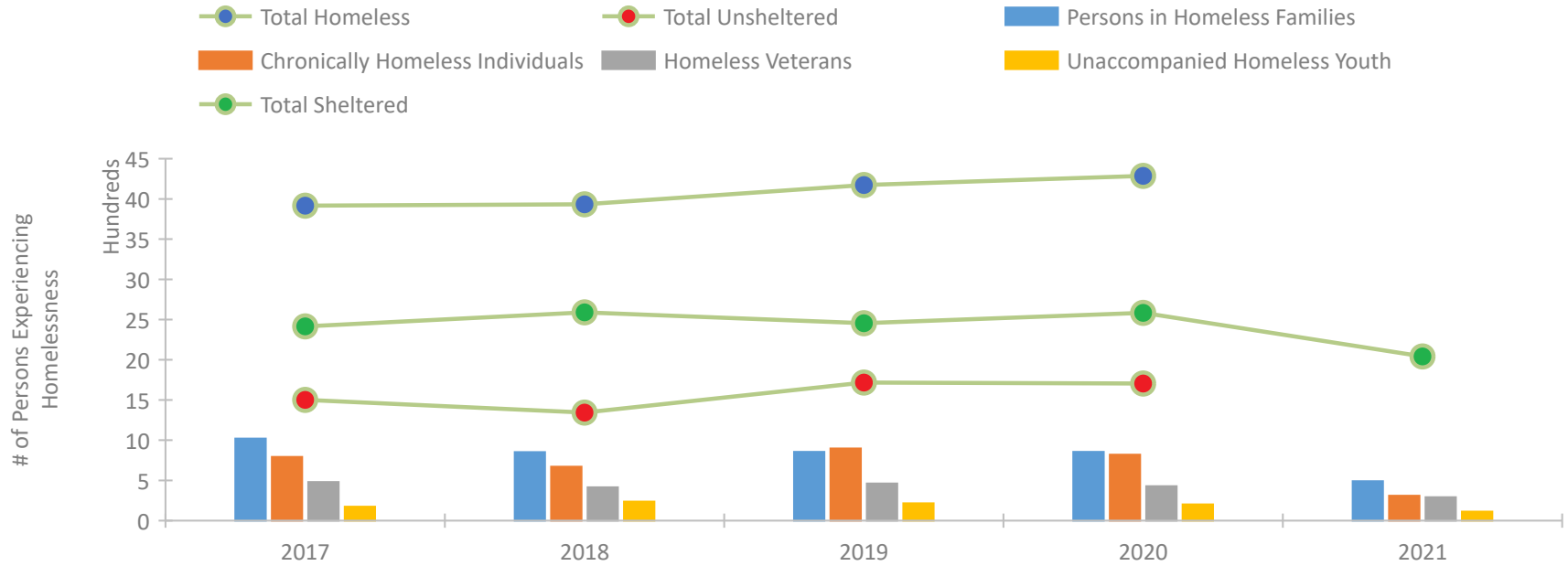


2021 CoC Boundaries 2020 CoC Boundaries

Housing Inventory Count by Program Type



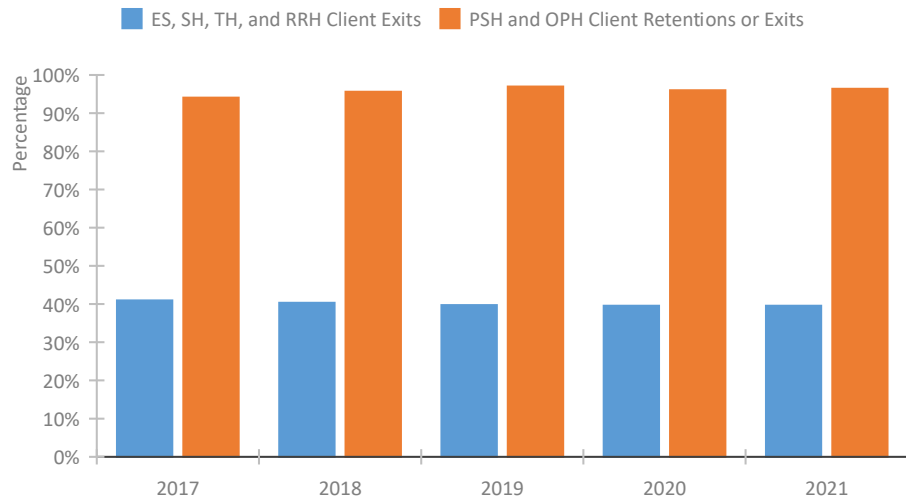
Homeless Population – Point-in-Time (PIT) Count*



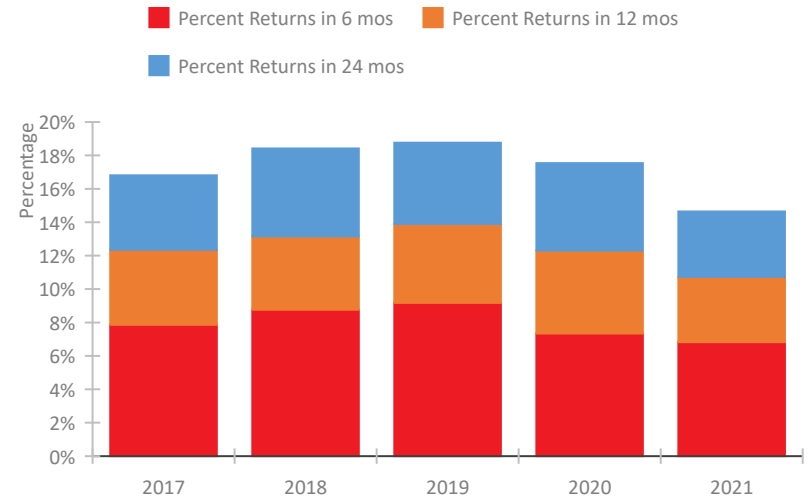
*In 2021, HUD gave communities the option to cancel or modify the unsheltered survey portion of their counts based on the potential risk of COVID-19 transmission associated with conducting an in-person survey. As a result, HUD has excluded the unsheltered population sub-totals and all unsheltered sub-population data for this reporting period. The user is cautioned that the unsheltered and total homeless counts reported here may be missing data.

South Carolina Continuum of Care Performance Profile

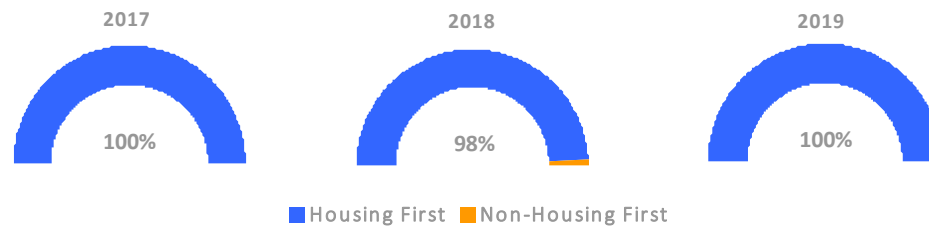
Exits to Permanent Housing by Program Type



Returns to Homelessness Over Time



Proportion of Housing First Projects by Year†



Number of Projects by Year			
	2017	2018	2019
Housing First Projects	55	58	51
Non-Housing First Projects	0	1	0

†2021 Data unavailable at the time of report publication. In 2020 HUD awarded renewal projects noncompetitively, therefore no new data was collected and Housing First data remains the same from 2019 to 2020.

Data Summary: South Carolina

Point-In-Time Count Summary*

	2017	2018	2019	2020	2021	2020-21 Change	% Change
Number of Sheltered Persons in Families	748	621	580	608	490	-118	-19%
Number of Unsheltered Persons in Families	272	230	274	247	0	-247	-100%
Number of Sheltered Individuals	1,667	1,968	1,875	1,975	1,552	-423	-21%
Number of Unsheltered Individuals	1,229	1,114	1,443	1,457	--	--	--
Total Homeless Persons	3,916	3,933	4,172	4,287	2,042	-2,245	-52%
Number of Sheltered Families	254	200	189	210	158	-52	-25%
Number of Unsheltered Families	71	73	86	69	--	--	--
Number of Total Families	325	273	275	279	158	-121	-43%
Sheltered Chronically Homeless Individuals	226	344	341	362	309	-53	-15%
Unsheltered Chronically Homeless Individuals	566	327	556	457	--	--	--
Total Chronically Homeless Individuals	792	671	897	819	309	-510	-62%
Sheltered Veterans	321	320	343	317	292	-25	-8%
Unsheltered Veterans	159	95	119	111	--	--	--
Total Veterans	480	415	462	428	292	-136	-32%
Sheltered Unaccompanied Youth (up to 24)	108	170	141	133	112	-21	-16%
Unsheltered Unaccompanied Youth (up to 24)	65	67	75	69	--	--	--
Total Unaccompanied Youth (up to 24)	173	237	216	202	112	-90	-45%

System Performance Measures Summary

	2017	2018	2019	2020	2021	2020-21 Change	% Change
Rate People Return to Homelessness in 6 Months	7.9%	8.8%	9.2%	7.3%	6.8%	-0.5%	N/A
Number of People who are Homeless for the First Time	7,597	6,754	6,218	5,450	5,267	-183	-3.4%
Rate People Exit from ES, SH, TH, and RRH to PH	40.9%	40.3%	39.7%	39.5%	39.6%	0%	N/A
Rate People in PSH and OPH Retain or Exit to PH	94.0%	95.6%	97.0%	96.0%	96.4%	0.4%	N/A

Housing Inventory Count Summary

	2017	2018	2019	2020	2021	2020-21 Change	% Change
Emergency Shelter (ES)	1,898	2,146	2,209	2,067	1,982	-85	-4%
Safe Haven (SH)	13	17	17	17	12	-5	-29%
Transitional Housing (TH)	1,020	838	845	983	791	-192	-20%
Permanent Supportive Housing (PSH)	2,497	2,052	2,071	2,110	2,176	66	3%
Rapid Re-Housing (RRH)	473	551	468	472	859	387	82%
Other Permanent Housing (OPH)	162	237	284	451	474	23	5%

Award Summary

	2017	2018	2019	2020	2021	2020-21 Change	% Change
Continuum of Care (CoC)	\$9,954,311	\$10,854,731	\$10,886,492	\$11,275,567	\$12,643,795	\$1,368,228	12%
Emergency Solutions Grants (ESG)	\$3,201,857	\$3,084,753	\$3,163,240	\$3,262,880	\$3,296,236	\$33,356	1%
Youth Homelessness Demonstration Program (YHDP)	--	--	--	--	\$3,159,750	--	--

*In 2021, HUD gave communities the option to cancel or modify the unsheltered survey portion of their counts based on the potential risk of COVID-19 transmission associated with conducting an in-person survey. As a result, HUD has excluded the unsheltered population sub-totals and all unsheltered sub-population data for this reporting period. The user is cautioned that the unsheltered and total homeless counts reported here may be missing data.