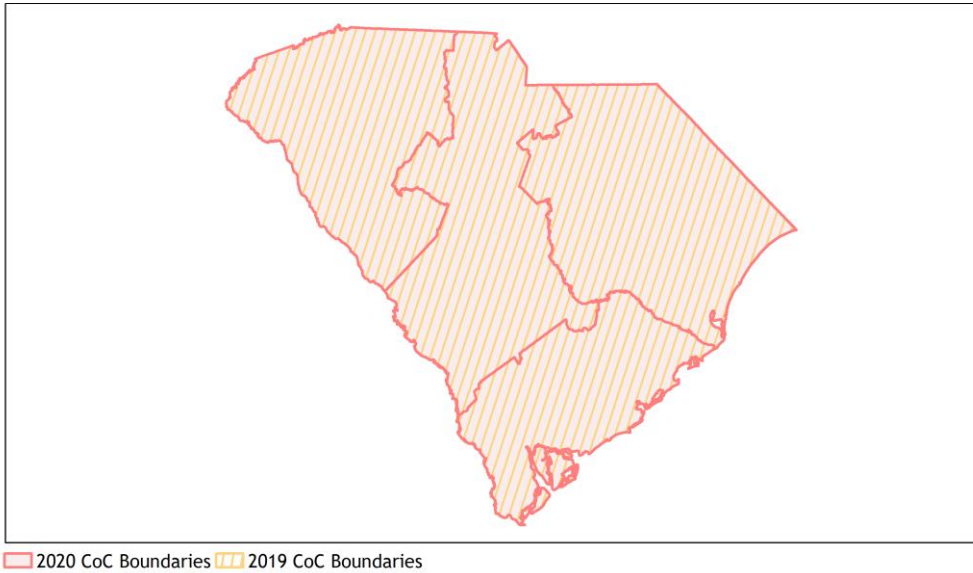
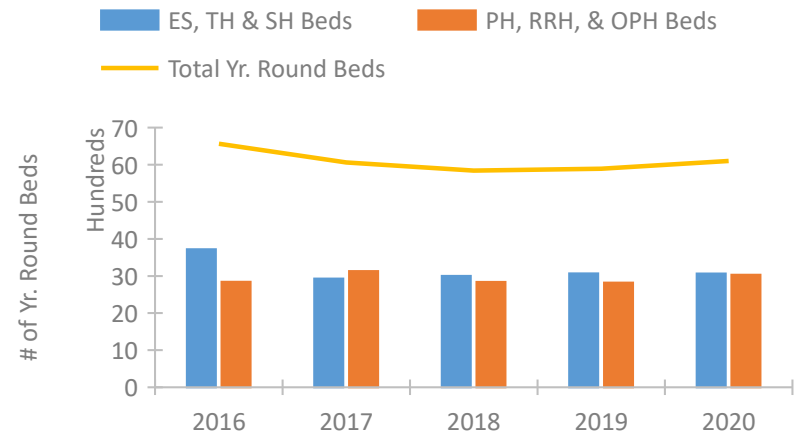


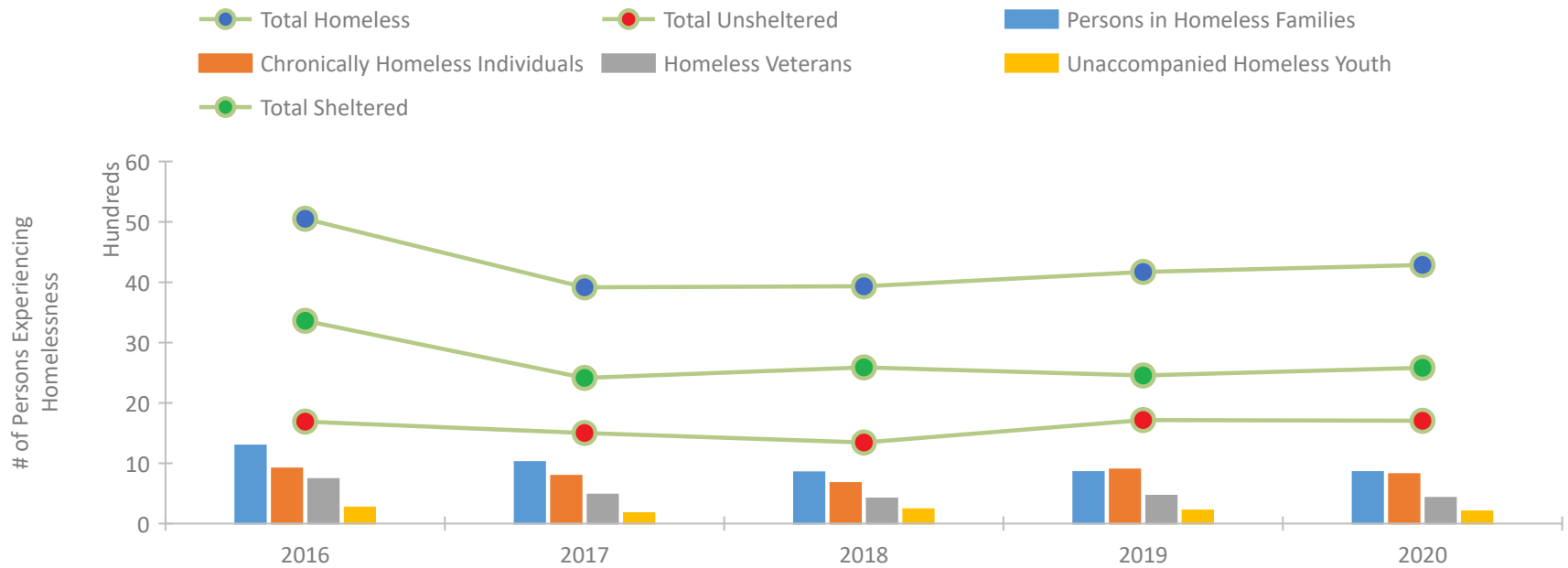
South Carolina Continuum of Care Performance Profile



Housing Inventory Count by Program Type

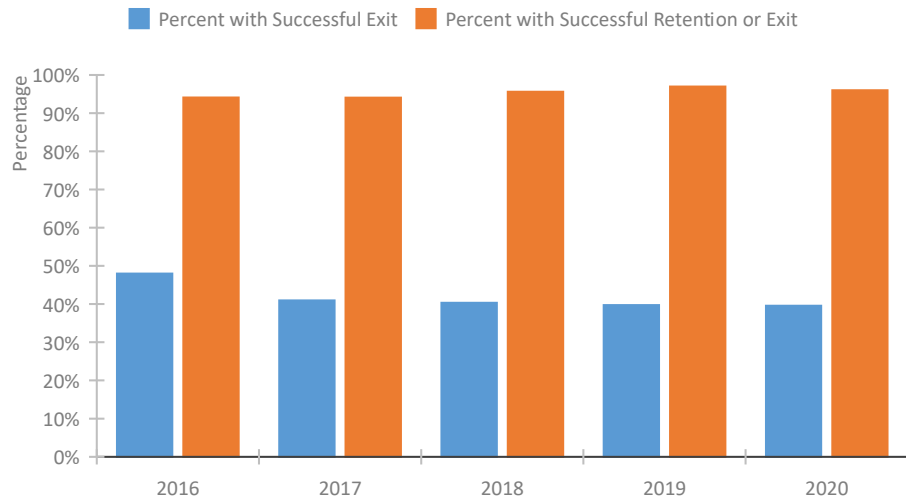


Homeless Population – Point-in-Time (PIT) Count

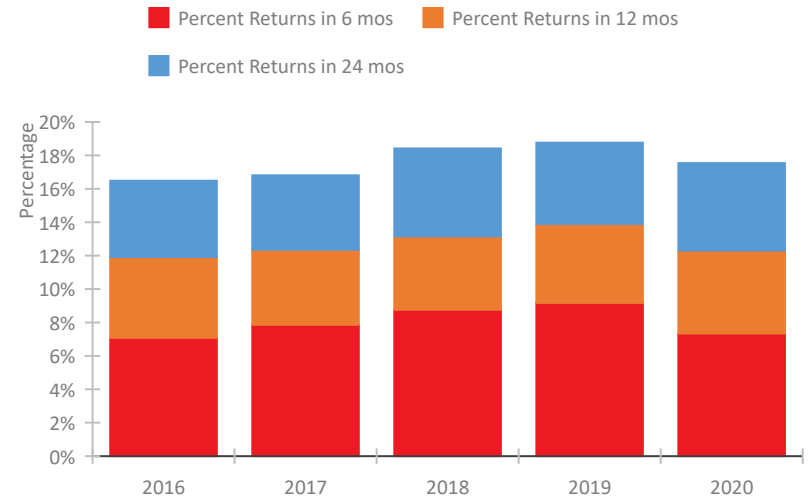


South Carolina Continuum of Care Performance Profile

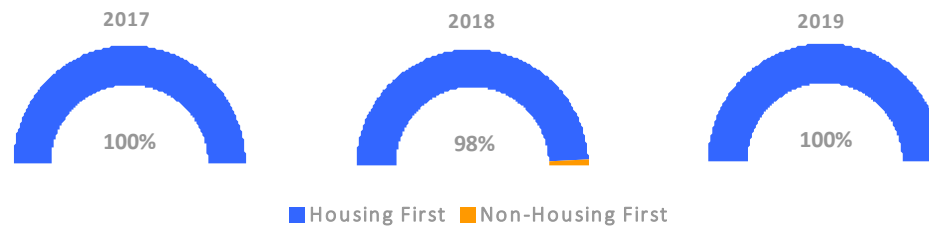
Exits to Permanent Housing by Program Type



Returns to Homelessness Over Time



Proportion of Housing First Projects by Year*



Number of Projects by Year			
	2017	2018	2019
Housing First Projects	55	58	51
Non-Housing First Projects	0	1	0

*In 2020 HUD awarded renewal projects noncompetitively, therefore no new data was collected and Housing First data remains the same from 2019 to 2020.

Data Summary: South Carolina

Point-In-Time Count Summary

	2016	2017	2018	2019	2020	2019-20 Change	% Change
Number of Sheltered Persons in Families	1,021	748	621	580	608	28	5%
Number of Unsheltered Persons in Families	272	272	230	274	247	-27	-10%
Number of Sheltered Individuals	2,340	1,667	1,968	1,875	1,975	100	5%
Number of Unsheltered Individuals	1,418	1,229	1,114	1,443	1,457	14	1%
Total Homeless Persons	5,051	3,916	3,933	4,172	4,287	115	3%
Number of Sheltered Families	329	254	200	189	210	21	11%
Number of Unsheltered Families	80	71	73	86	69	-17	-20%
Number of Total Families	409	325	273	275	279	4	1%
Sheltered Chronically Homeless Individuals	395	226	344	341	362	21	6%
Unsheltered Chronically Homeless Individuals	518	566	327	556	457	-99	-18%
Total Chronically Homeless Individuals	913	792	671	897	819	-78	-9%
Sheltered Veterans	452	321	320	343	317	-26	-8%
Unsheltered Veterans	286	159	95	119	111	-8	-7%
Total Veterans	738	480	415	462	428	-34	-7%
Sheltered Unaccompanied Youth (up to 24)	151	108	170	141	133	-8	-6%
Unsheltered Unaccompanied Youth (up to 24)	115	65	67	75	69	-6	-8%
Total Unaccompanied Youth (up to 24)	266	173	237	216	202	-14	-6%

System Performance Measures Summary

	2016	2017	2018	2019	2020	2019-20 Change	% Change
Rate People Return to Homelessness in 6 Months	7.1%	7.9%	8.8%	9.2%	7.3%	-1.8%	N/A
Number of People who are Homeless for the First Time	7,062	7,597	6,754	6,218	5,450	-768	-12.4%
Rate People Exit from ES, SH, TH, and RRH to PH	48.0%	40.9%	40.3%	39.7%	39.5%	-0.2%	N/A
Rate People in PSH and OPH Retain or Exit to PH	94.1%	94.0%	95.6%	97.0%	96.0%	-1%	N/A

Housing Inventory Count Summary

	2016	2017	2018	2019	2020	2019-20 Change	% Change
Emergency Shelter (ES)	1,755	1,898	2,146	2,209	2,067	-142	-6%
Safe Haven (SH)	12	13	17	17	17	0	-0%
Transitional Housing (TH)	1,954	1,020	838	845	983	138	16%
Permanent Supportive Housing (PSH)	2,178	2,497	2,052	2,071	2,110	39	2%
Rapid Re-Housing (RRH)	542	473	551	468	472	4	1%
Other Permanent Housing (OPH)	124	162	237	284	451	167	59%

Award Summary

	2016	2017	2018	2019	2020	2019-20 Change	% Change
Continuum of Care (CoC)	\$9,734,026	\$9,954,311	\$10,854,731	\$10,886,492	\$11,275,567	\$389,075	4%
Emergency Solutions Grants (ESG)	\$3,086,823	\$3,201,857	\$3,084,753	\$3,163,240	\$3,262,880	\$99,640	3%