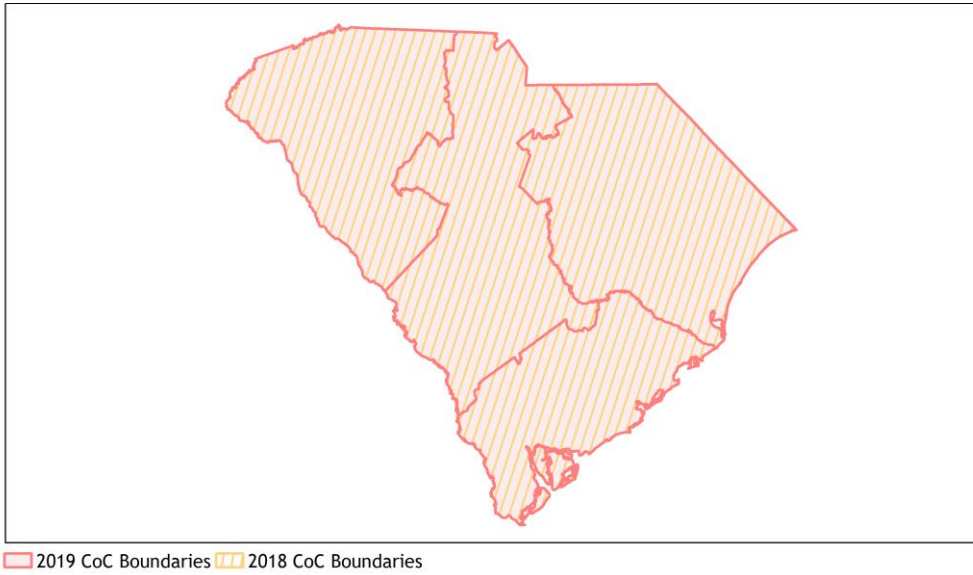
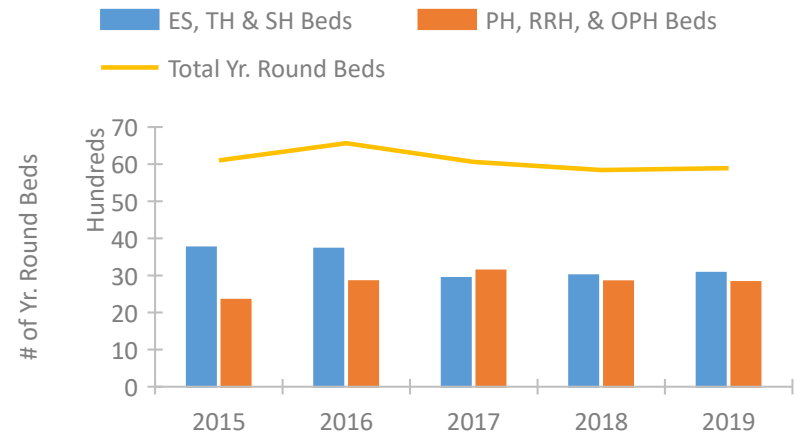


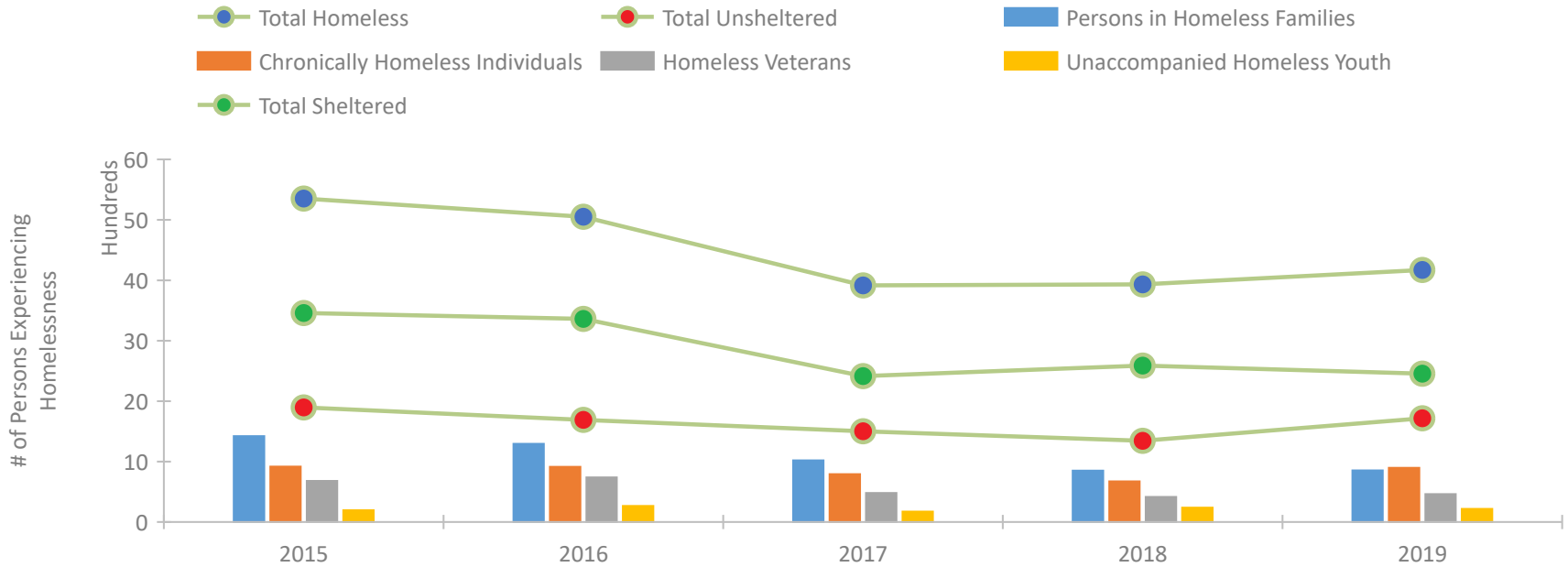
South Carolina Continuum of Care Performance Profile



Housing Inventory Count by Program Type

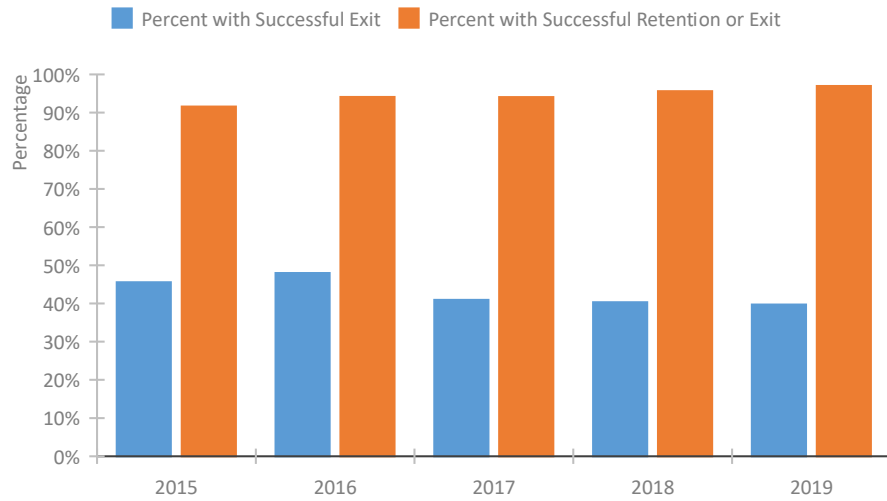


Homeless Population – Point-in-Time (PIT) Count

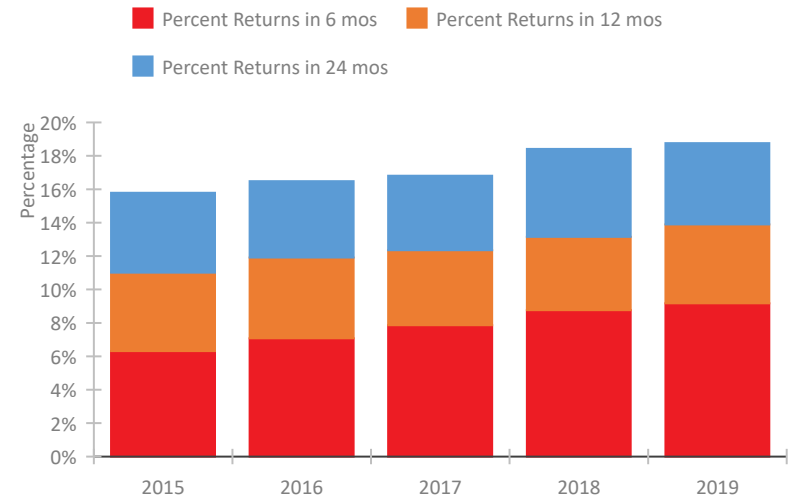


South Carolina Continuum of Care Performance Profile

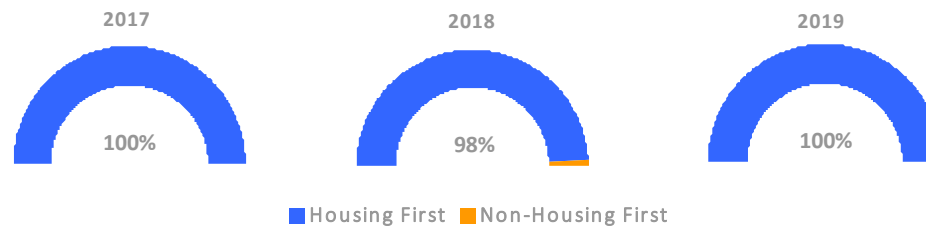
Exits to Permanent Housing by Program Type



Returns to Homelessness Over Time



Proportion of Housing First Projects by Year



Number of Projects by Year

	2017	2018	2019
Housing First Projects	55	58	51
Non-Housing First Projects	0	1	0

Data Summary: South Carolina

Point-In-Time Count Summary

	2015	2016	2017	2018	2019	2018-19 Change	% Change
Number of Sheltered Persons in Families	993	1,021	748	621	580	-41	-7%
Number of Unsheltered Persons in Families	427	272	272	230	274	44	19%
Number of Sheltered Individuals	2,465	2,340	1,667	1,968	1,875	-93	-5%
Number of Unsheltered Individuals	1,469	1,418	1,229	1,114	1,443	329	30%
Total Homeless Persons	5,354	5,051	3,916	3,933	4,172	239	6%
Number of Sheltered Families	332	329	254	200	189	-11	-6%
Number of Unsheltered Families	178	80	71	73	86	13	18%
Number of Total Families	510	409	325	273	275	2	1%
Sheltered Chronically Homeless Individuals	456	395	226	344	341	-3	-1%
Unsheltered Chronically Homeless Individuals	460	518	566	327	556	229	70%
Total Chronically Homeless Individuals	916	913	792	671	897	226	34%
Sheltered Veterans	470	452	321	320	343	23	7%
Unsheltered Veterans	211	286	159	95	119	24	25%
Total Veterans	681	738	480	415	462	47	11%
Sheltered Unaccompanied Youth (up to 24)	126	151	108	170	141	-29	-17%
Unsheltered Unaccompanied Youth (up to 24)	69	115	65	67	75	8	12%
Total Unaccompanied Youth (up to 24)	195	266	173	237	216	-21	-9%

System Performance Measures Summary

	2015	2016	2017	2018	2019	2018-19 Change	% Change
Rate People Return to Homelessness in 6 Months	6.3%	7.1%	7.9%	8.8%	9.2%	0.4%	N/A
Number of People who are Homeless for the First Time	7,203	7,062	7,597	6,754	6,218	-536	-7.9%
Rate People Exit from ES, SH, TH, and RRH to PH	45.6%	48.0%	40.9%	40.3%	39.7%	-0.6%	N/A
Rate People in PSH and OPH Retain or Exit to PH	91.6%	94.1%	94.0%	95.6%	97.0%	1.4%	N/A

Housing Inventory Count Summary

	2015	2016	2017	2018	2019	2018-19 Change	% Change
Emergency Shelter (ES)	1,676	1,755	1,898	2,146	2,209	63	3%
Safe Haven (SH)	12	12	13	17	17	0	0%
Transitional Housing (TH)	2,067	1,954	1,020	838	845	7	1%
Permanent Supportive Housing (PSH)	1,976	2,178	2,497	2,052	2,071	19	1%
Rapid Re-Housing (RRH)	265	542	473	551	468	-83	-15%
Other Permanent Housing (OPH)	104	124	162	237	284	47	20%

Award Summary

	2015	2016	2017	2018	2019	2018-19 Change	% Change
Continuum of Care (CoC)	\$9,906,624	\$9,734,026	\$9,954,311	\$10,854,731	\$10,886,492	\$31,761	0%
Emergency Solutions Grants (ESG)	\$3,112,867	\$3,086,823	\$3,201,857	\$3,084,753	\$3,163,240	\$78,487	3%