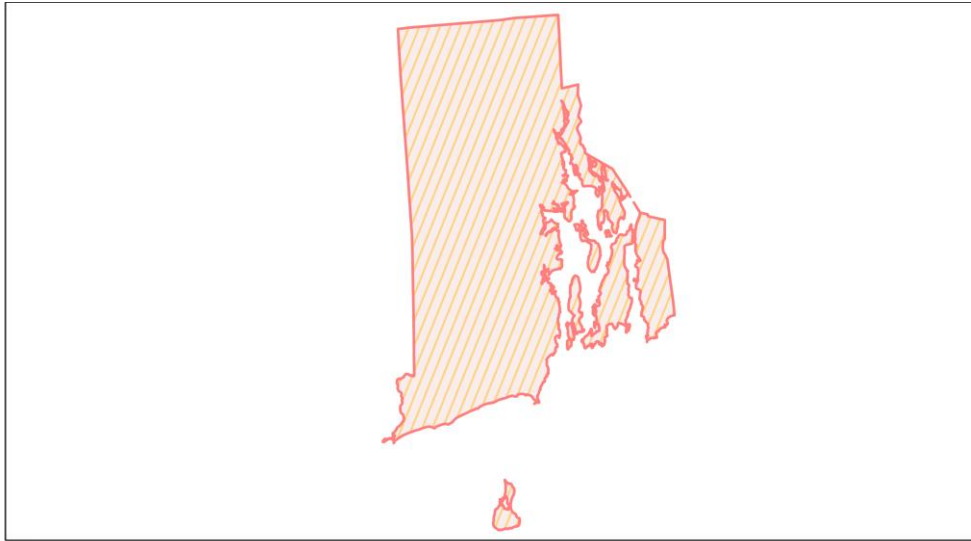
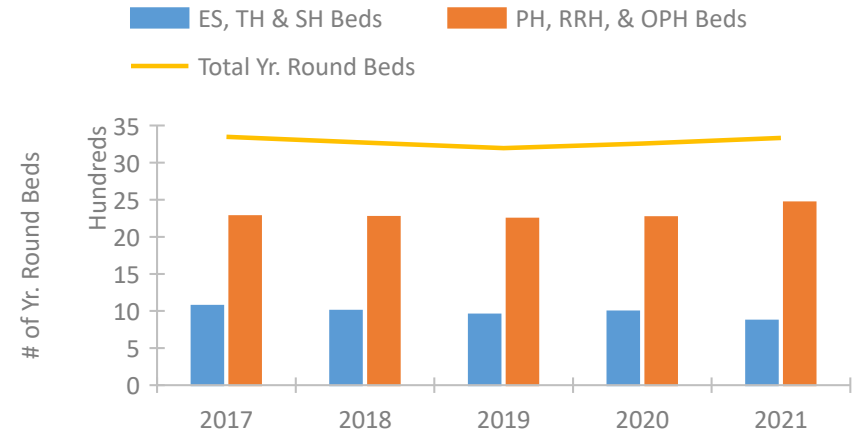


Rhode Island Continuum of Care Performance Profile

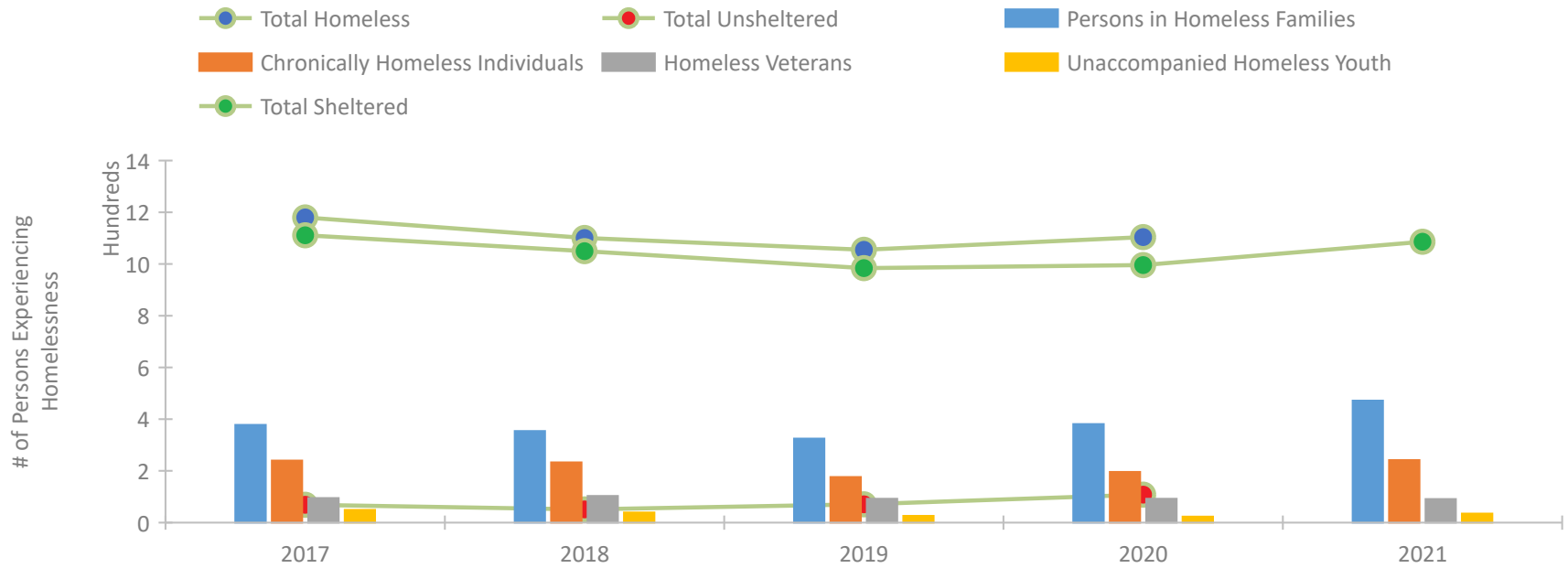


2021 CoC Boundaries 2020 CoC Boundaries

Housing Inventory Count by Program Type



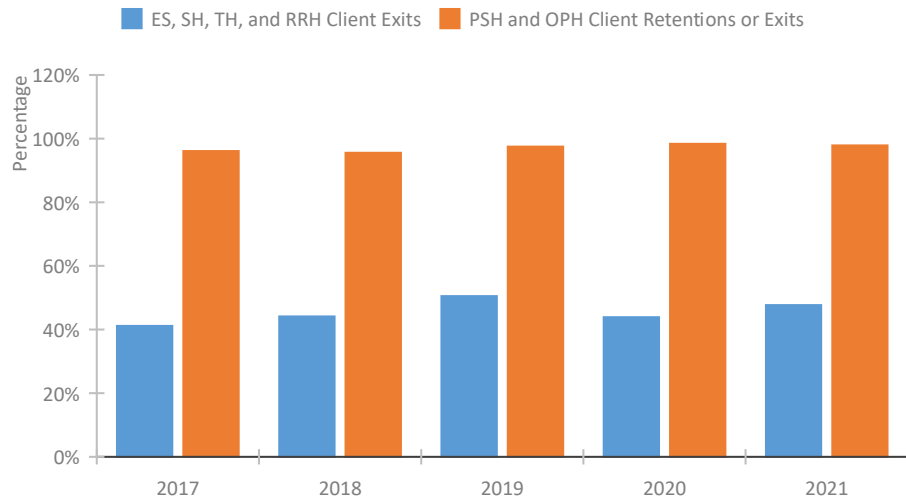
Homeless Population – Point-in-Time (PIT) Count*



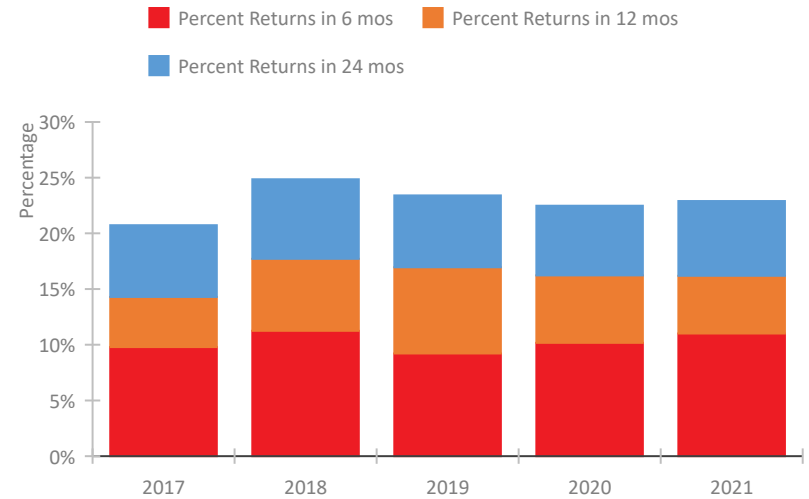
*In 2021, HUD gave communities the option to cancel or modify the unsheltered survey portion of their counts based on the potential risk of COVID-19 transmission associated with conducting an in-person survey. As a result, HUD has excluded the unsheltered population sub-totals and all unsheltered sub-population data for this reporting period. The user is cautioned that the unsheltered and total homeless counts reported here may be missing data.

Rhode Island Continuum of Care Performance Profile

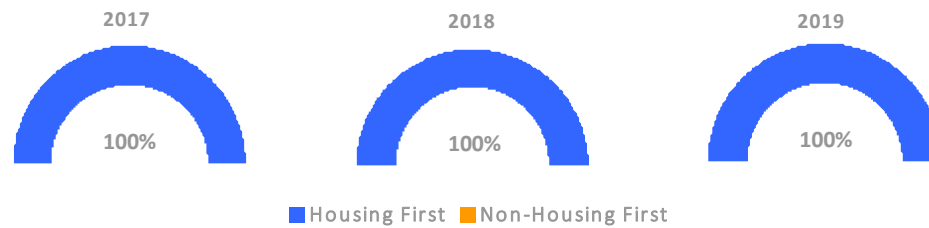
Exits to Permanent Housing by Program Type



Returns to Homelessness Over Time



Proportion of Housing First Projects by Year†



Number of Projects by Year			
	2017	2018	2019
Housing First Projects	39	40	42
Non-Housing First Projects	0	0	0

†2021 Data unavailable at the time of report publication. In 2020 HUD awarded renewal projects noncompetitively, therefore no new data was collected and Housing First data remains the same from 2019 to 2020.

Data Summary: Rhode Island

Point-In-Time Count Summary*

	2017	2018	2019	2020	2021	2020-21 Change	% Change
Number of Sheltered Persons in Families	378	352	321	381	472	91	24%
Number of Unsheltered Persons in Families	0	2	4	0	0	0	--
Number of Sheltered Individuals	733	698	663	615	614	-1	0%
Number of Unsheltered Individuals	69	49	67	108	--	--	--
Total Homeless Persons	1,180	1,101	1,055	1,104	1,086	-18	-2%
Number of Sheltered Families	106	120	110	121	152	31	26%
Number of Unsheltered Families	0	1	1	0	--	--	--
Number of Total Families	106	121	111	121	152	31	26%
Sheltered Chronically Homeless Individuals	215	216	165	171	242	71	42%
Unsheltered Chronically Homeless Individuals	25	17	11	25	--	--	--
Total Chronically Homeless Individuals	240	233	176	196	242	46	23%
Sheltered Veterans	92	100	89	84	91	7	8%
Unsheltered Veterans	3	3	3	8	--	--	--
Total Veterans	95	103	92	92	91	-1	-1%
Sheltered Unaccompanied Youth (up to 24)	41	38	24	20	35	15	75%
Unsheltered Unaccompanied Youth (up to 24)	8	1	2	3	--	--	--
Total Unaccompanied Youth (up to 24)	49	39	26	23	35	12	52%

System Performance Measures Summary

	2017	2018	2019	2020	2021	2020-21 Change	% Change
Rate People Return to Homelessness in 6 Months	9.8%	11.2%	9.2%	10.2%	11.0%	0.8%	N/A
Number of People who are Homeless for the First Time	2,525	2,084	1,631	710	1,587	877	123.5%
Rate People Exit from ES, SH, TH, and RRH to PH	41.1%	44.1%	50.5%	43.9%	47.7%	3.8%	N/A
Rate People in PSH and OPH Retain or Exit to PH	96.1%	95.6%	97.5%	98.4%	97.9%	-0.5%	N/A

Housing Inventory Count Summary

	2017	2018	2019	2020	2021	2020-21 Change	% Change
Emergency Shelter (ES)	726	662	662	726	608	-118	-16%
Transitional Housing (TH)	343	341	290	267	261	-6	-2%
Permanent Supportive Housing (PSH)	1,239	1,244	1,518	1,237	1,308	71	6%
Rapid Re-Housing (RRH)	328	366	259	394	445	51	13%
Other Permanent Housing (OPH)	712	658	467	633	711	78	12%

Award Summary

	2017	2018	2019	2020	2021	2020-21 Change	% Change
Continuum of Care (CoC)	\$5,796,184	\$7,160,233	\$7,664,476	\$8,099,399	\$10,405,306	\$2,305,907	28%
Emergency Solutions Grants (ESG)	\$1,361,193	\$1,368,881	\$1,398,690	\$1,434,862	\$1,432,250	(\$2,612)	0%
Youth Homelessness Demonstration Program (YHDP)	--	--	\$3,504,973	--	--	--	--

*In 2021, HUD gave communities the option to cancel or modify the unsheltered survey portion of their counts based on the potential risk of COVID-19 transmission associated with conducting an in-person survey. As a result, HUD has excluded the unsheltered population sub-totals and all unsheltered sub-population data for this reporting period. The user is cautioned that the unsheltered and total homeless counts reported here may be missing data.