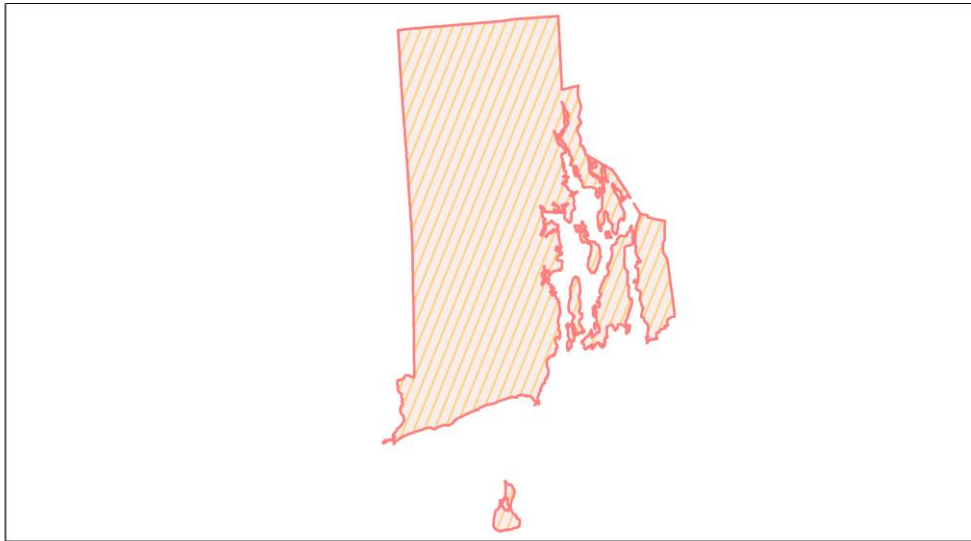
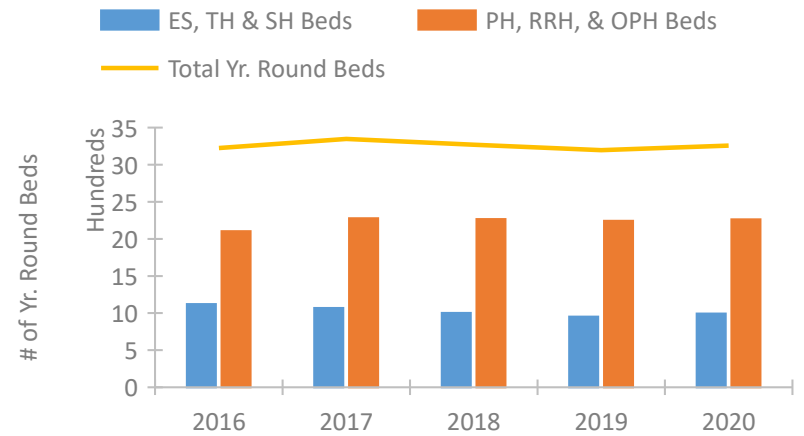


Rhode Island Continuum of Care Performance Profile

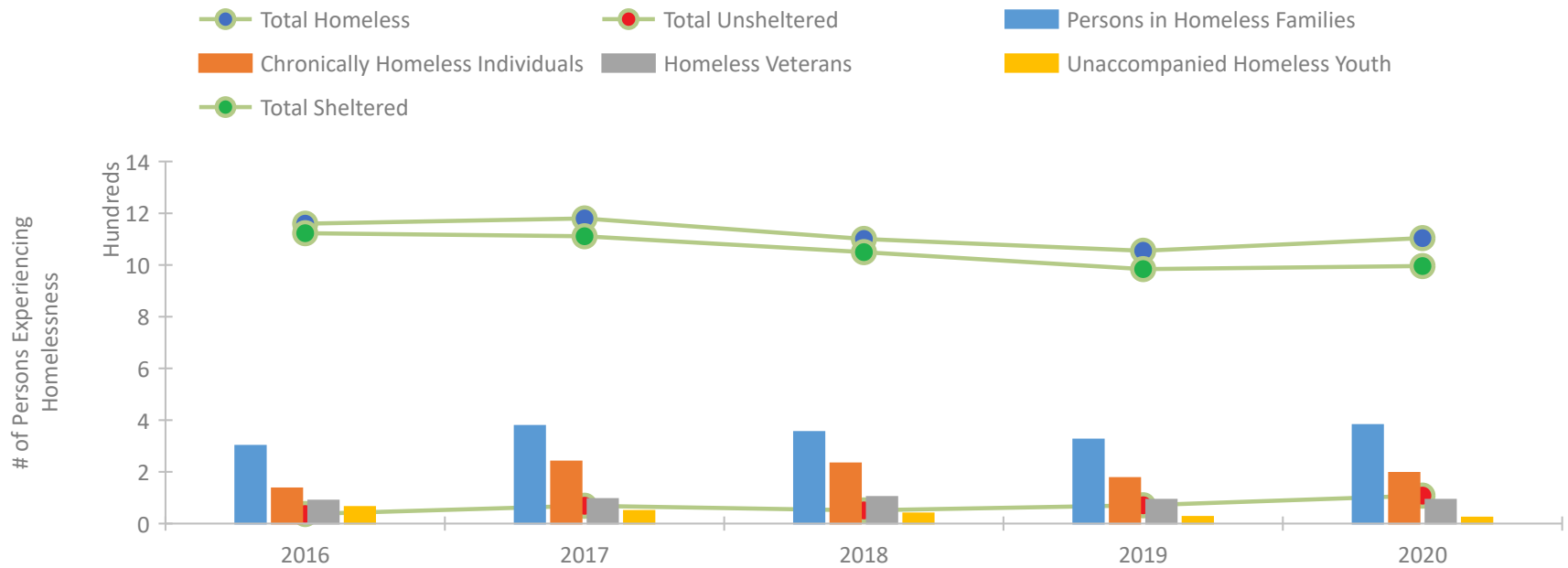


2020 CoC Boundaries 2019 CoC Boundaries

Housing Inventory Count by Program Type

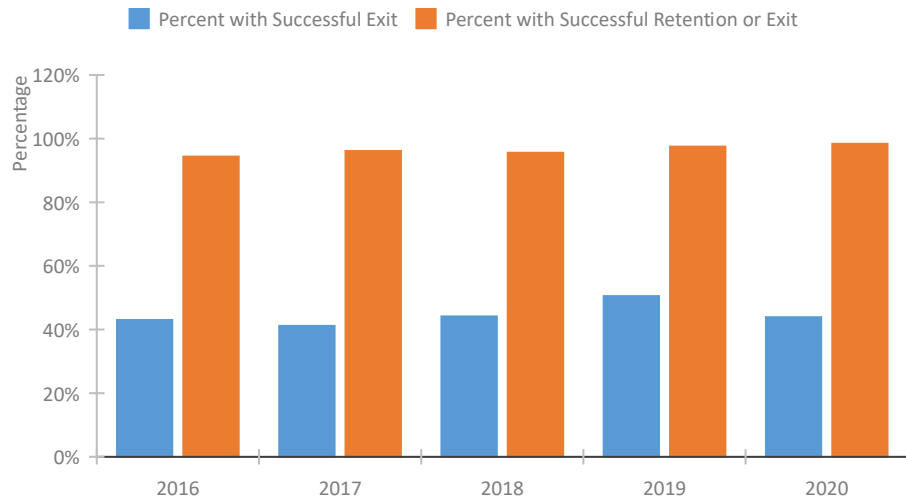


Homeless Population – Point-in-Time (PIT) Count

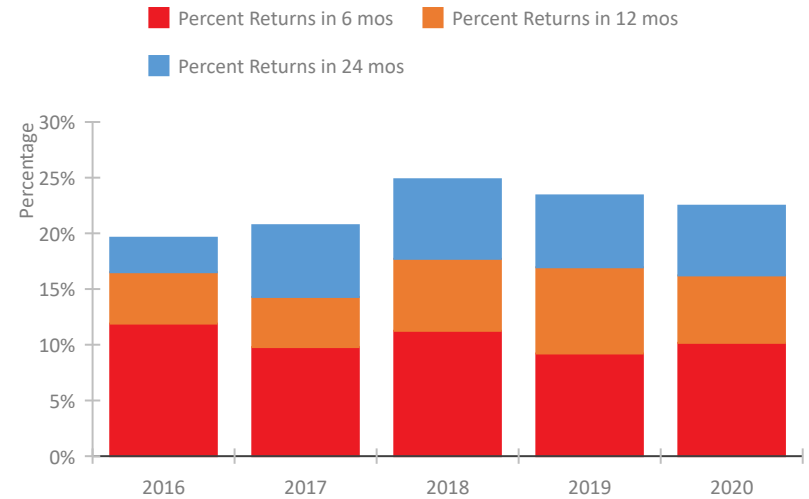


Rhode Island Continuum of Care Performance Profile

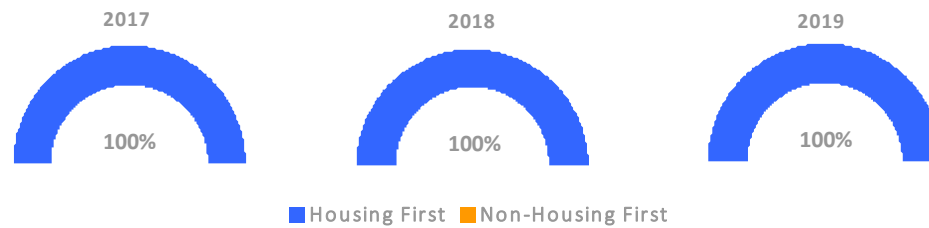
Exits to Permanent Housing by Program Type



Returns to Homelessness Over Time



Proportion of Housing First Projects by Year*



Number of Projects by Year

	2017	2018	2019
Housing First Projects	39	40	42
Non-Housing First Projects	0	0	0

*In 2020 HUD awarded renewal projects noncompetitively, therefore no new data was collected and Housing First data remains the same from 2019 to 2020.

Data Summary: Rhode Island

Point-In-Time Count Summary

	2016	2017	2018	2019	2020	2019-20 Change	% Change
Number of Sheltered Persons in Families	301	378	352	321	381	60	19%
Number of Unsheltered Persons in Families	0	0	2	4	0	-4	-100%
Number of Sheltered Individuals	822	733	698	663	615	-48	-7%
Number of Unsheltered Individuals	37	69	49	67	108	41	61%
Total Homeless Persons	1,160	1,180	1,101	1,055	1,104	49	5%
Number of Sheltered Families	93	106	120	110	121	11	10%
Number of Unsheltered Families	0	0	1	1	0	-1	-100%
Number of Total Families	93	106	121	111	121	10	9%
Sheltered Chronically Homeless Individuals	133	215	216	165	171	6	4%
Unsheltered Chronically Homeless Individuals	3	25	17	11	25	14	127%
Total Chronically Homeless Individuals	136	240	233	176	196	20	11%
Sheltered Veterans	89	92	100	89	84	-5	-6%
Unsheltered Veterans	0	3	3	3	8	5	167%
Total Veterans	89	95	103	92	92	0	-0%
Sheltered Unaccompanied Youth (up to 24)	63	41	38	24	20	-4	-17%
Unsheltered Unaccompanied Youth (up to 24)	1	8	1	2	3	1	50%
Total Unaccompanied Youth (up to 24)	64	49	39	26	23	-3	-12%

System Performance Measures Summary

	2016	2017	2018	2019	2020	2019-20 Change	% Change
Rate People Return to Homelessness in 6 Months	11.9%	9.8%	11.2%	9.2%	10.2%	1%	N/A
Number of People who are Homeless for the First Time	2,441	2,525	2,084	1,631	710	-921	-56.5%
Rate People Exit from ES, SH, TH, and RRH to PH	43.0%	41.1%	44.1%	50.5%	43.9%	-6.6%	N/A
Rate People in PSH and OPH Retain or Exit to PH	94.3%	96.1%	95.6%	97.5%	98.4%	0.9%	N/A

Housing Inventory Count Summary

	2016	2017	2018	2019	2020	2019-20 Change	% Change
Emergency Shelter (ES)	703	726	662	662	726	64	10%
Transitional Housing (TH)	419	343	341	290	267	-23	-8%
Permanent Supportive Housing (PSH)	1,452	1,239	1,244	1,518	1,237	-281	-19%
Rapid Re-Housing (RRH)	308	328	366	259	394	135	52%
Other Permanent Housing (OPH)	344	712	658	467	633	166	36%

Award Summary

	2016	2017	2018	2019	2020	2019-20 Change	% Change
Continuum of Care (CoC)	\$5,932,887	\$5,796,184	\$7,160,233	\$7,664,476	\$8,099,399	\$434,923	6%
Emergency Solutions Grants (ESG)	\$1,378,923	\$1,361,193	\$1,368,881	\$1,398,690	\$1,434,862	\$36,172	3%
Youth Homelessness Demonstration Program (YHDP)	--	--	--	\$3,504,973	--	--	--