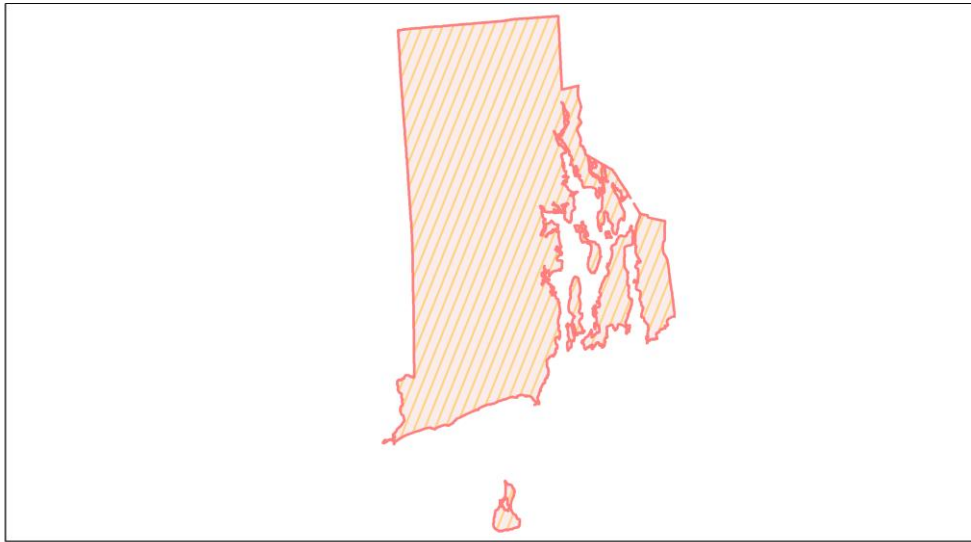
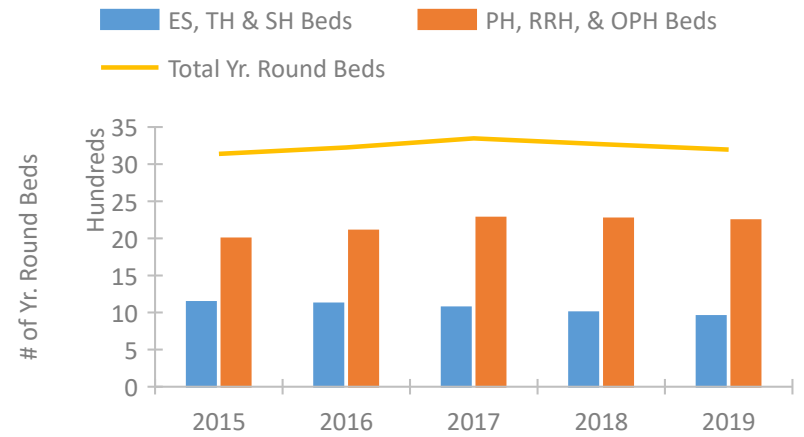


## Rhode Island Continuum of Care Performance Profile

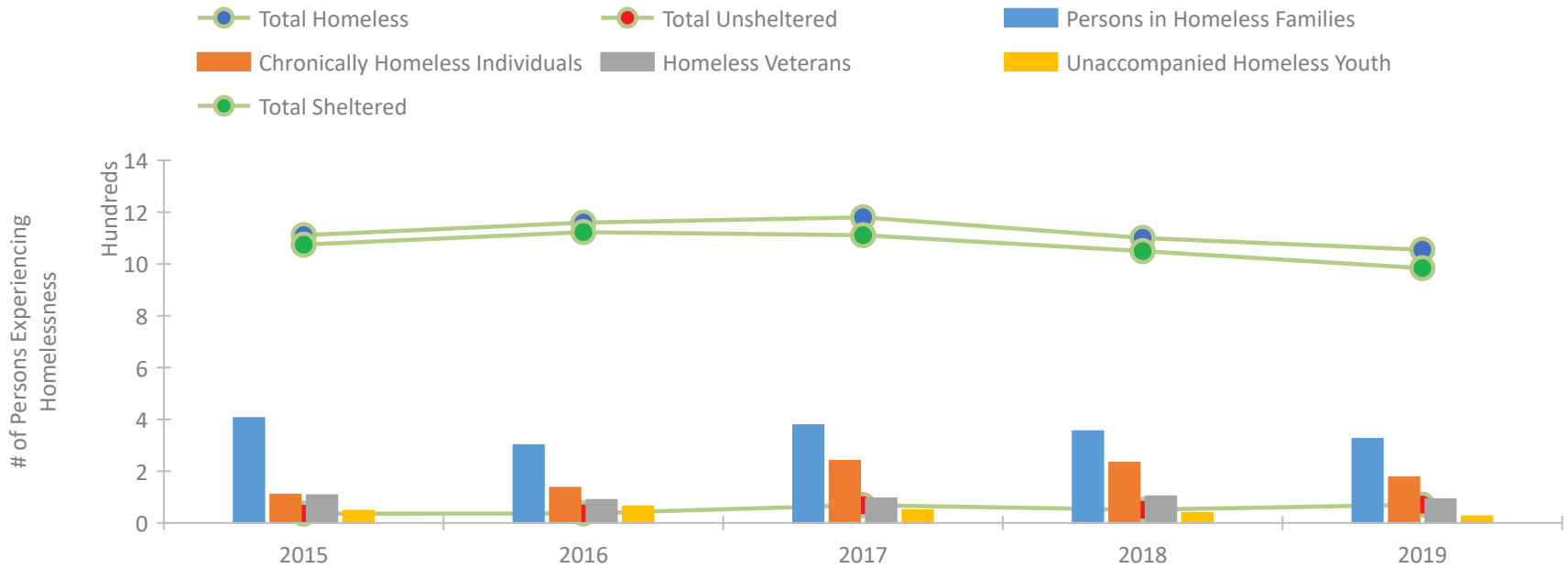


2019 CoC Boundaries 2018 CoC Boundaries

### Housing Inventory Count by Program Type

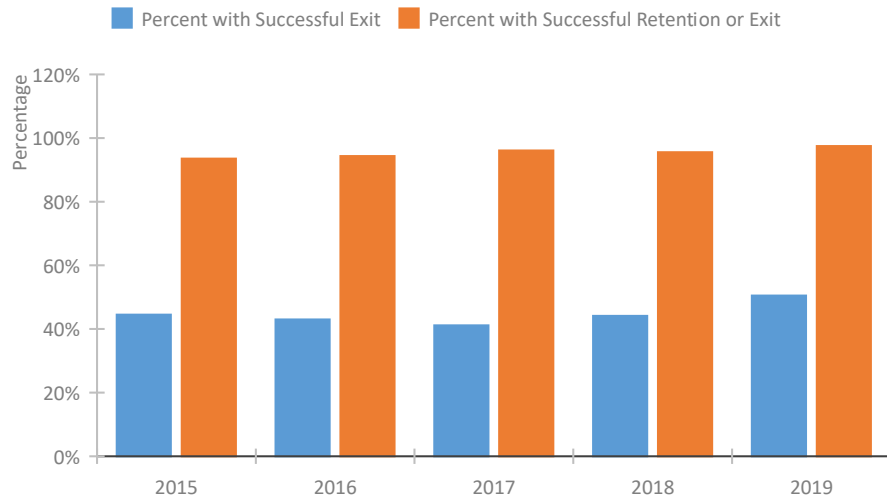


### Homeless Population – Point-in-Time (PIT) Count

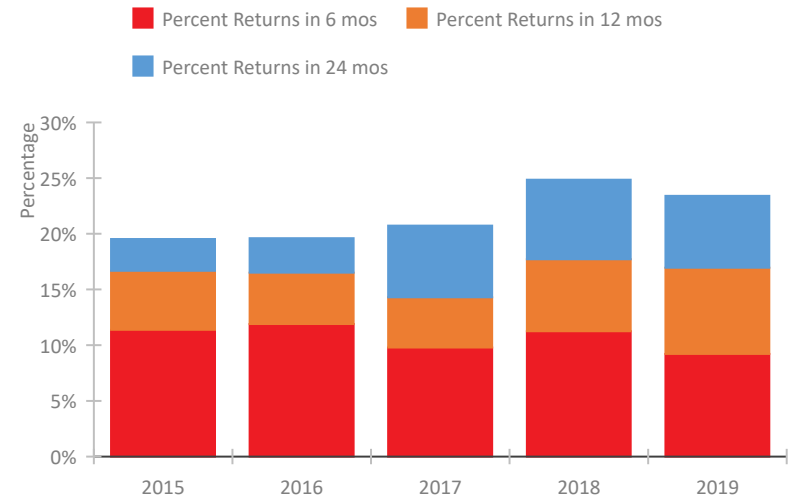


## Rhode Island Continuum of Care Performance Profile

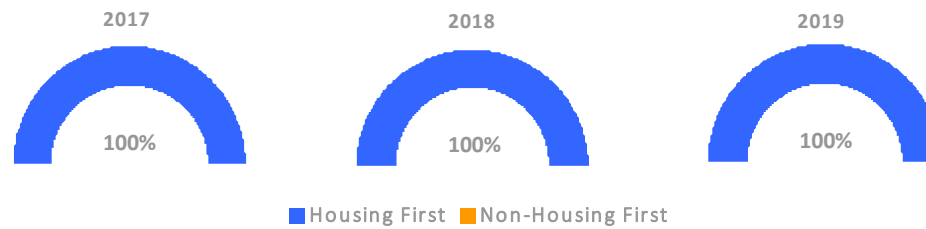
### Exits to Permanent Housing by Program Type



### Returns to Homelessness Over Time



### Proportion of Housing First Projects by Year



### Number of Projects by Year

	2017	2018	2019
Housing First Projects	39	40	42
Non-Housing First Projects	0	0	0

## Data Summary: Rhode Island

### Point-In-Time Count Summary

	2015	2016	2017	2018	2019	2018-19 Change	% Change
Number of Sheltered Persons in Families	402	301	378	352	321	-31	-9%
Number of Unsheltered Persons in Families	3	0	0	2	4	2	100%
Number of Sheltered Individuals	673	822	733	698	663	-35	-5%
Number of Unsheltered Individuals	33	37	69	49	67	18	37%
<b>Total Homeless Persons</b>	<b>1,111</b>	<b>1,160</b>	<b>1,180</b>	<b>1,101</b>	<b>1,055</b>	<b>-46</b>	<b>-4%</b>
Number of Sheltered Families	111	93	106	120	110	-10	-8%
Number of Unsheltered Families	1	0	0	1	1	0	0%
<b>Number of Total Families</b>	<b>112</b>	<b>93</b>	<b>106</b>	<b>121</b>	<b>111</b>	<b>-10</b>	<b>-8%</b>
Sheltered Chronically Homeless Individuals	100	133	215	216	165	-51	-24%
Unsheltered Chronically Homeless Individuals	10	3	25	17	11	-6	-35%
<b>Total Chronically Homeless Individuals</b>	<b>110</b>	<b>136</b>	<b>240</b>	<b>233</b>	<b>176</b>	<b>-57</b>	<b>-24%</b>
Sheltered Veterans	105	89	92	100	89	-11	-11%
Unsheltered Veterans	2	0	3	3	3	0	0%
<b>Total Veterans</b>	<b>107</b>	<b>89</b>	<b>95</b>	<b>103</b>	<b>92</b>	<b>-11</b>	<b>-11%</b>
Sheltered Unaccompanied Youth (up to 24)	39	63	41	38	24	-14	-37%
Unsheltered Unaccompanied Youth (up to 24)	8	1	8	1	2	1	100%
<b>Total Unaccompanied Youth (up to 24)</b>	<b>47</b>	<b>64</b>	<b>49</b>	<b>39</b>	<b>26</b>	<b>-13</b>	<b>-33%</b>

### System Performance Measures Summary

	2015	2016	2017	2018	2019	2018-19 Change	% Change
Rate People Return to Homelessness in 6 Months	11.4%	11.9%	9.8%	11.2%	9.2%	-2%	N/A
Number of People who are Homeless for the First Time	2,232	2,441	2,525	2,084	1,631	-453	-21.7%
Rate People Exit from ES, SH, TH, and RRH to PH	44.5%	43.0%	41.1%	44.1%	50.5%	6.4%	N/A
Rate People in PSH and OPH Retain or Exit to PH	93.5%	94.3%	96.1%	95.6%	97.5%	1.9%	N/A

### Housing Inventory Count Summary

	2015	2016	2017	2018	2019	2018-19 Change	% Change
Emergency Shelter (ES)	705	703	726	662	662	0	0%
Transitional Housing (TH)	437	419	343	341	290	-51	-15%
Permanent Supportive Housing (PSH)	1,506	1,452	1,239	1,244	1,518	274	22%
Rapid Re-Housing (RRH)	373	308	328	366	259	-107	-29%
Other Permanent Housing (OPH)	118	344	712	658	467	-191	-29%

### Award Summary

	2015	2016	2017	2018	2019	2018-19 Change	% Change
<b>Continuum of Care (CoC)</b>	\$5,985,905	\$5,932,887	\$5,796,184	\$7,160,233	\$7,664,476	\$504,243	7%
<b>Emergency Solutions Grants (ESG)</b>	\$1,386,935	\$1,378,923	\$1,361,193	\$1,368,881	\$1,398,690	\$29,809	2%