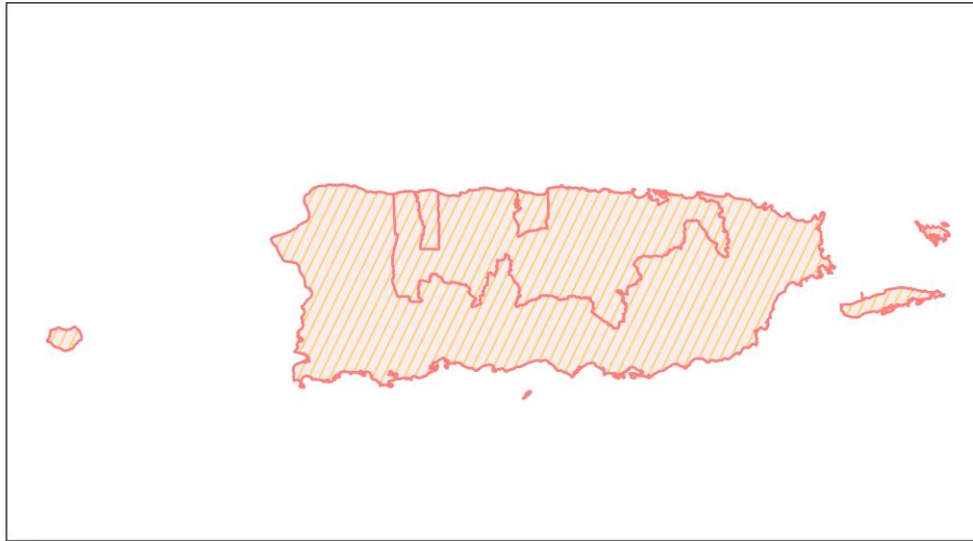
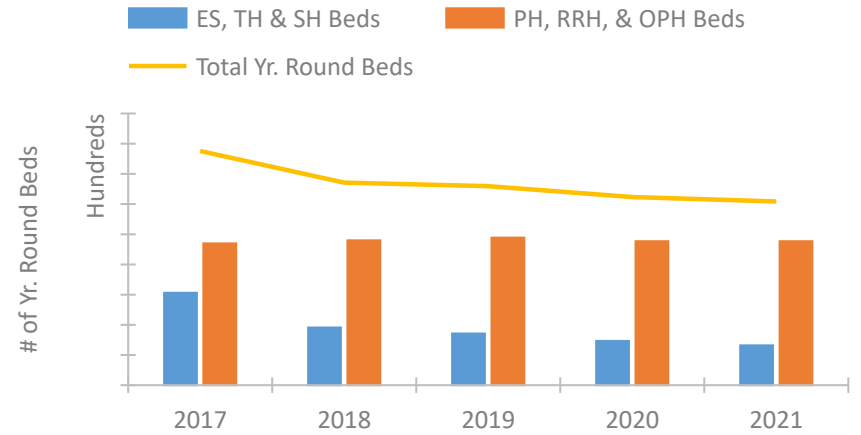


Puerto Rico Continuum of Care Performance Profile

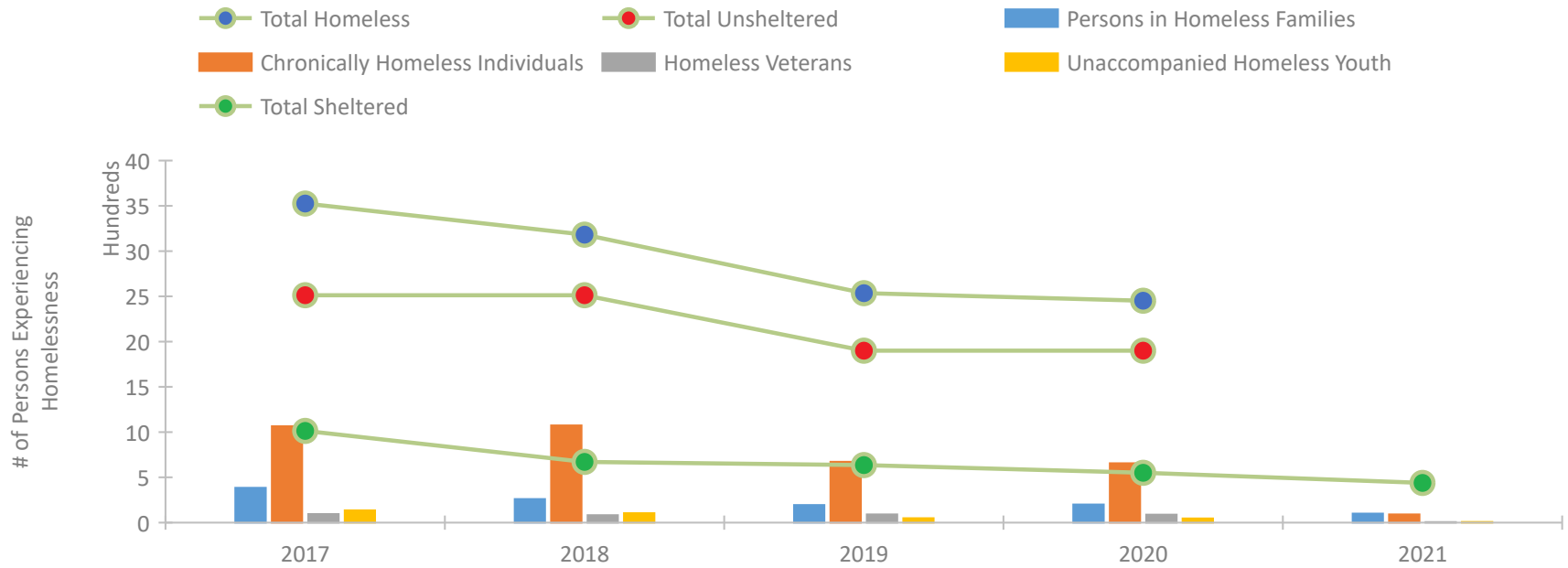


2021 CoC Boundaries 2020 CoC Boundaries

Housing Inventory Count by Program Type



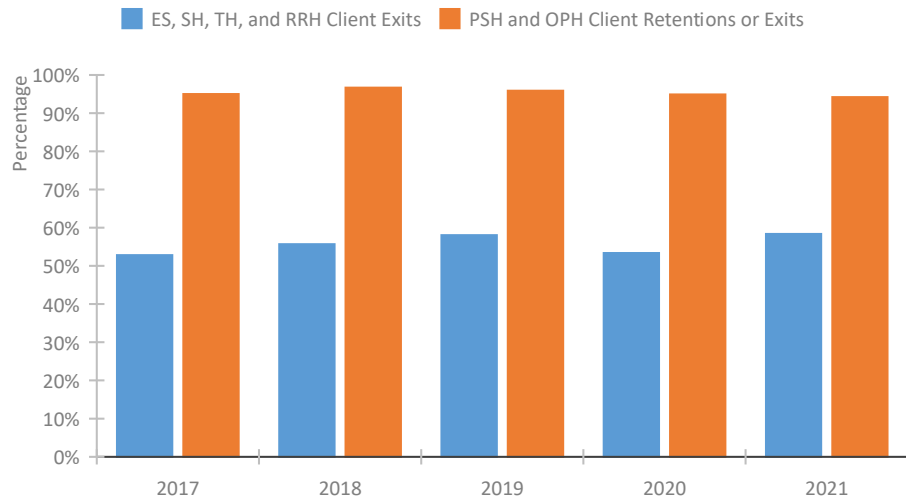
Homeless Population – Point-in-Time (PIT) Count*



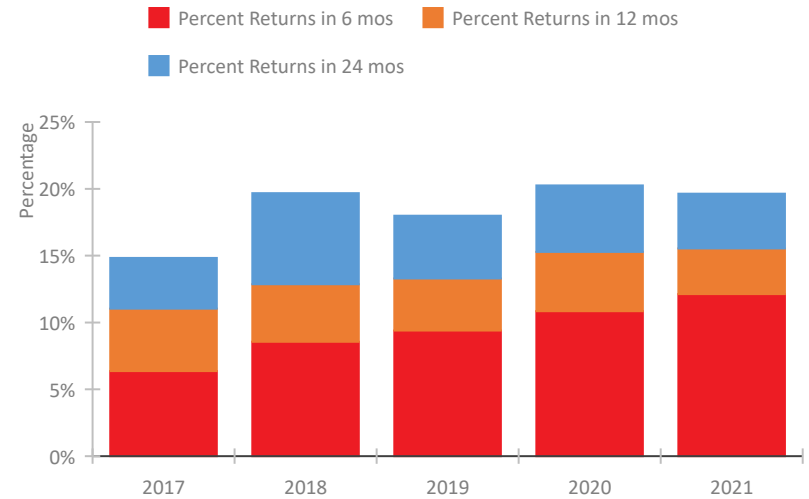
*In 2021, HUD gave communities the option to cancel or modify the unsheltered survey portion of their counts based on the potential risk of COVID-19 transmission associated with conducting an in-person survey. As a result, HUD has excluded the unsheltered population sub-totals and all unsheltered sub-population data for this reporting period. The user is cautioned that the unsheltered and total homeless counts reported here may be missing data.

Puerto Rico Continuum of Care Performance Profile

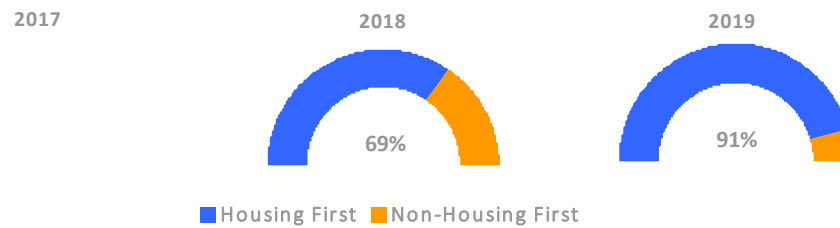
Exits to Permanent Housing by Program Type



Returns to Homelessness Over Time



Proportion of Housing First Projects by Year†



Number of Projects by Year

	2017	2018	2019
Housing First Projects	--	47	62
Non-Housing First Projects	--	21	6

†2021 Data unavailable at the time of report publication. In 2020 HUD awarded renewal projects noncompetitively, therefore no new data was collected and Housing First data remains the same from 2019 to 2020.

Data Summary: Puerto Rico

Point-In-Time Count Summary*

	2017	2018	2019	2020	2021	2020-21 Change	% Change
Number of Sheltered Persons in Families	213	90	124	130	100	-30	-23%
Number of Unsheltered Persons in Families	171	171	70	70	0	-70	-100%
Number of Sheltered Individuals	800	580	511	421	339	-82	-19%
Number of Unsheltered Individuals	2,341	2,341	1,830	1,830	--	--	--
Total Homeless Persons	3,525	3,182	2,535	2,451	439	-2,012	-82%
Number of Sheltered Families	74	31	41	44	37	-7	-16%
Number of Unsheltered Families	44	44	18	18	--	--	--
Number of Total Families	118	75	59	62	37	-25	-40%
Sheltered Chronically Homeless Individuals	142	151	111	95	90	-5	-5%
Unsheltered Chronically Homeless Individuals	923	923	561	561	--	--	--
Total Chronically Homeless Individuals	1,065	1,074	672	656	90	-566	-86%
Sheltered Veterans	30	18	18	16	5	-11	-69%
Unsheltered Veterans	64	64	72	72	--	--	--
Total Veterans	94	82	90	88	5	-83	-94%
Sheltered Unaccompanied Youth (up to 24)	46	15	13	10	7	-3	-30%
Unsheltered Unaccompanied Youth (up to 24)	89	89	36	36	--	--	--
Total Unaccompanied Youth (up to 24)	135	104	49	46	7	-39	-85%

System Performance Measures Summary

	2017	2018	2019	2020	2021	2020-21 Change	% Change
Rate People Return to Homelessness in 6 Months	6.4%	8.6%	9.4%	10.8%	12.1%	1.3%	N/A
Number of People who are Homeless for the First Time	1,808	2,376	1,718	1,059	1,206	147	13.9%
Rate People Exit from ES, SH, TH, and RRH to PH	52.8%	55.7%	58.1%	53.4%	58.4%	5%	N/A
Rate People in PSH and OPH Retain or Exit to PH	95.0%	96.7%	95.9%	94.9%	94.2%	-0.7%	N/A

Housing Inventory Count Summary

	2017	2018	2019	2020	2021	2020-21 Change	% Change
Emergency Shelter (ES)	684	455	430	325	282	-43	-13%
Safe Haven (SH)	32	22	22	22	12	-10	-45%
Transitional Housing (TH)	815	478	403	384	365	-19	-5%
Permanent Supportive Housing (PSH)	1,838	1,931	1,899	1,803	1,810	7	0%
Rapid Re-Housing (RRH)	231	213	289	326	320	-6	-2%
Other Permanent Housing (OPH)	280	255	255	255	255	0	0%

Award Summary

	2017	2018	2019	2020	2021	2020-21 Change	% Change
Continuum of Care (CoC)	\$19,383,733	\$18,683,589	\$20,402,554	\$20,751,657	\$22,625,540	\$1,873,883	9%
Emergency Solutions Grants (ESG)	\$6,977,605	\$4,848,531	\$4,881,072	\$4,952,823	\$4,882,048	(\$70,775)	-1%

*In 2021, HUD gave communities the option to cancel or modify the unsheltered survey portion of their counts based on the potential risk of COVID-19 transmission associated with conducting an in-person survey. As a result, HUD has excluded the unsheltered population sub-totals and all unsheltered sub-population data for this reporting period. The user is cautioned that the unsheltered and total homeless counts reported here may be missing data.