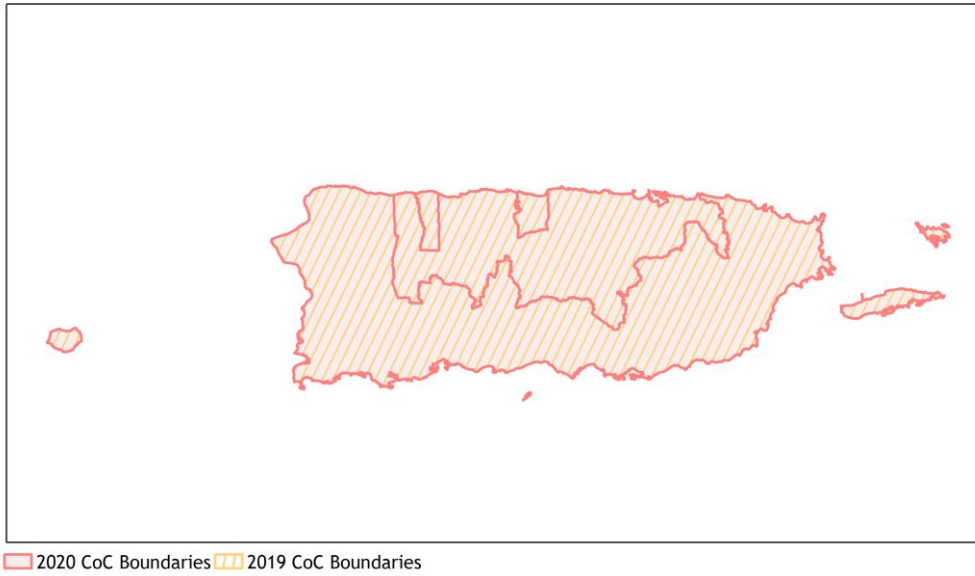
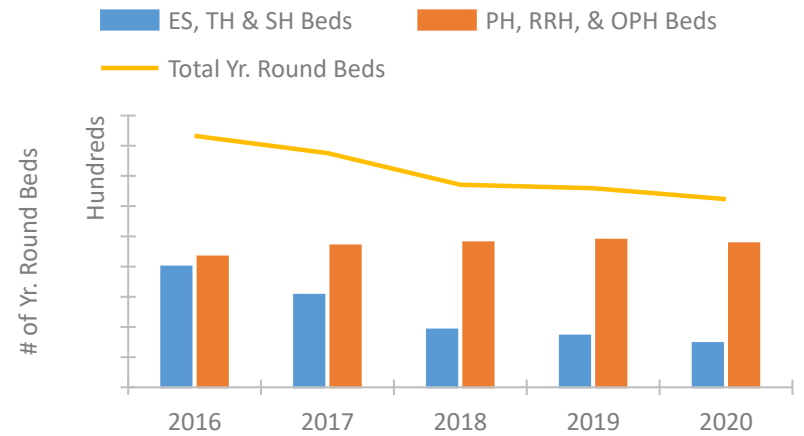


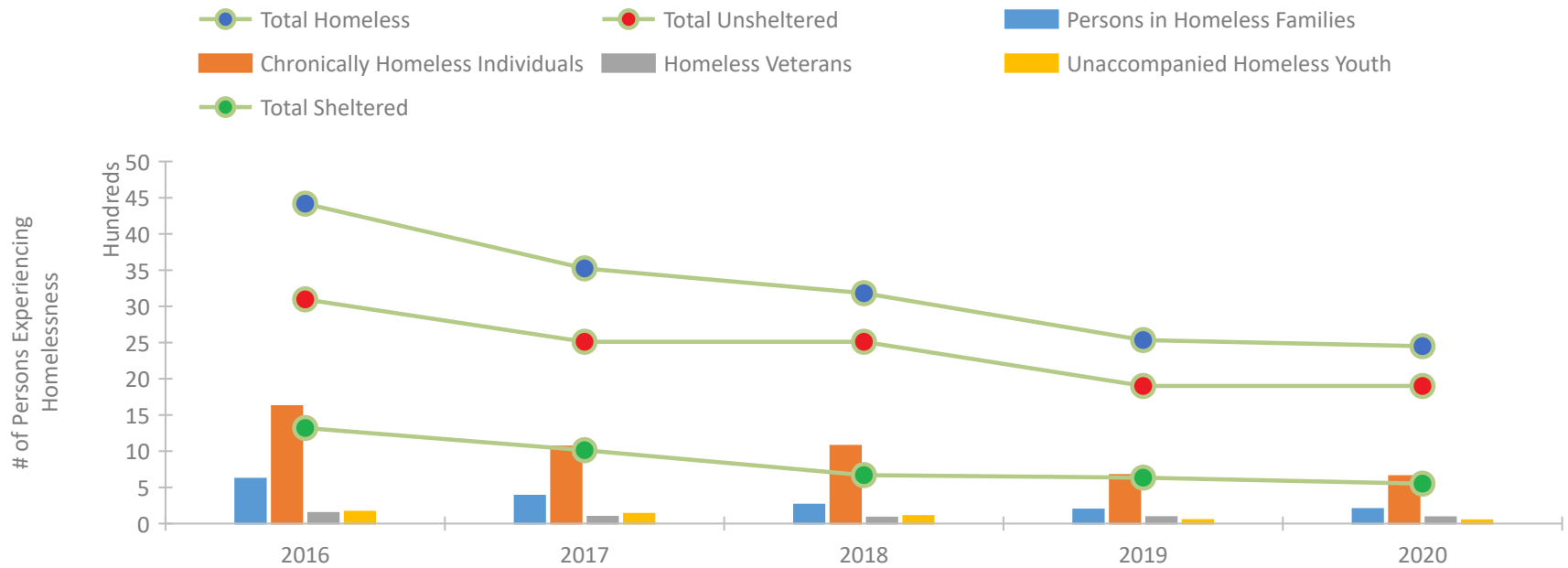
Puerto Rico Continuum of Care Performance Profile



Housing Inventory Count by Program Type

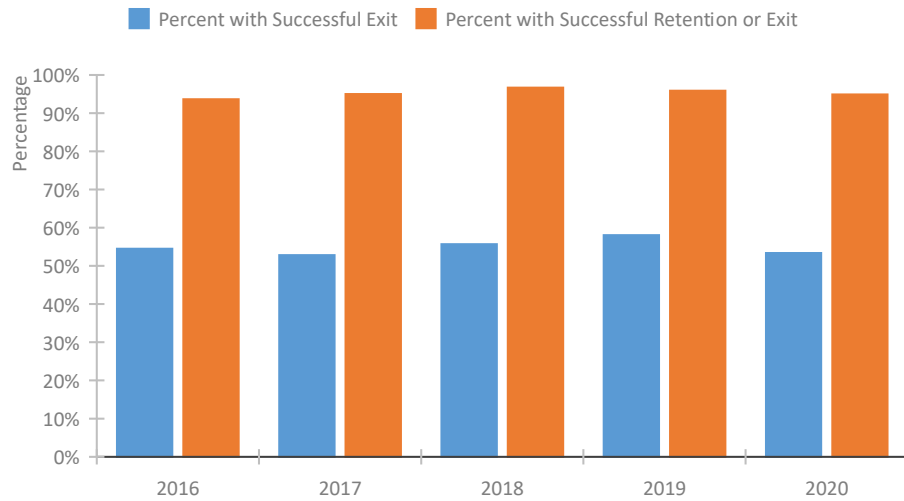


Homeless Population – Point-in-Time (PIT) Count

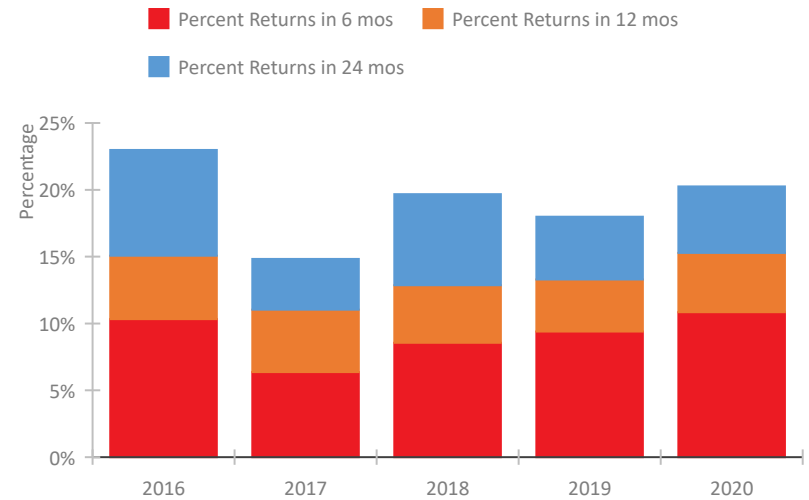


Puerto Rico Continuum of Care Performance Profile

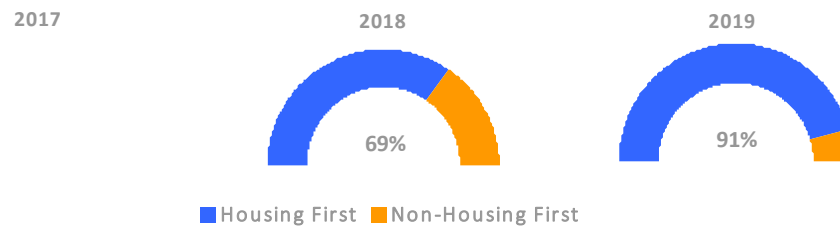
Exits to Permanent Housing by Program Type



Returns to Homelessness Over Time



Proportion of Housing First Projects by Year*



Number of Projects by Year

	2017	2018	2019
Housing First Projects	--	47	62
Non-Housing First Projects	--	21	6

*In 2020 HUD awarded renewal projects noncompetitively, therefore no new data was collected and Housing First data remains the same from 2019 to 2020.

Data Summary: Puerto Rico

Point-In-Time Count Summary

	2016	2017	2018	2019	2020	2019-20 Change	% Change
Number of Sheltered Persons in Families	422	213	90	124	130	6	5%
Number of Unsheltered Persons in Families	197	171	171	70	70	0	-0%
Number of Sheltered Individuals	899	800	580	511	421	-90	-18%
Number of Unsheltered Individuals	2,900	2,341	2,341	1,830	1,830	0	-0%
Total Homeless Persons	4,418	3,525	3,182	2,535	2,451	-84	-3%
Number of Sheltered Families	139	74	31	41	44	3	7%
Number of Unsheltered Families	49	44	44	18	18	0	-0%
Number of Total Families	188	118	75	59	62	3	5%
Sheltered Chronically Homeless Individuals	203	142	151	111	95	-16	-14%
Unsheltered Chronically Homeless Individuals	1,420	923	923	561	561	0	-0%
Total Chronically Homeless Individuals	1,623	1,065	1,074	672	656	-16	-2%
Sheltered Veterans	37	30	18	18	16	-2	-11%
Unsheltered Veterans	109	64	64	72	72	0	-0%
Total Veterans	146	94	82	90	88	-2	-2%
Sheltered Unaccompanied Youth (up to 24)	52	46	15	13	10	-3	-23%
Unsheltered Unaccompanied Youth (up to 24)	111	89	89	36	36	0	-0%
Total Unaccompanied Youth (up to 24)	163	135	104	49	46	-3	-6%

System Performance Measures Summary

	2016	2017	2018	2019	2020	2019-20 Change	% Change
Rate People Return to Homelessness in 6 Months	10.3%	6.4%	8.6%	9.4%	10.8%	1.4%	N/A
Number of People who are Homeless for the First Time	2,159	1,808	2,376	1,718	1,059	-659	-38.4%
Rate People Exit from ES, SH, TH, and RRH to PH	54.5%	52.8%	55.7%	58.1%	53.4%	-4.7%	N/A
Rate People in PSH and OPH Retain or Exit to PH	93.6%	95.0%	96.7%	95.9%	94.9%	-1%	N/A

Housing Inventory Count Summary

	2016	2017	2018	2019	2020	2019-20 Change	% Change
Emergency Shelter (ES)	645	684	455	430	325	-105	-24%
Safe Haven (SH)	77	32	22	22	22	0	-0%
Transitional Housing (TH)	1,278	815	478	403	384	-19	-5%
Permanent Supportive Housing (PSH)	1,806	1,838	1,931	1,899	1,803	-96	-5%
Rapid Re-Housing (RRH)	73	231	213	289	326	37	13%
Other Permanent Housing (OPH)	285	280	255	255	255	0	-0%

Award Summary

	2016	2017	2018	2019	2020	2019-20 Change	% Change
Continuum of Care (CoC)	\$18,715,977	\$19,383,733	\$18,683,589	\$20,402,554	\$20,751,657	\$349,103	2%
Emergency Solutions Grants (ESG)	\$5,179,664	\$6,977,605	\$4,848,531	\$4,881,072	\$4,952,823	\$71,751	1%