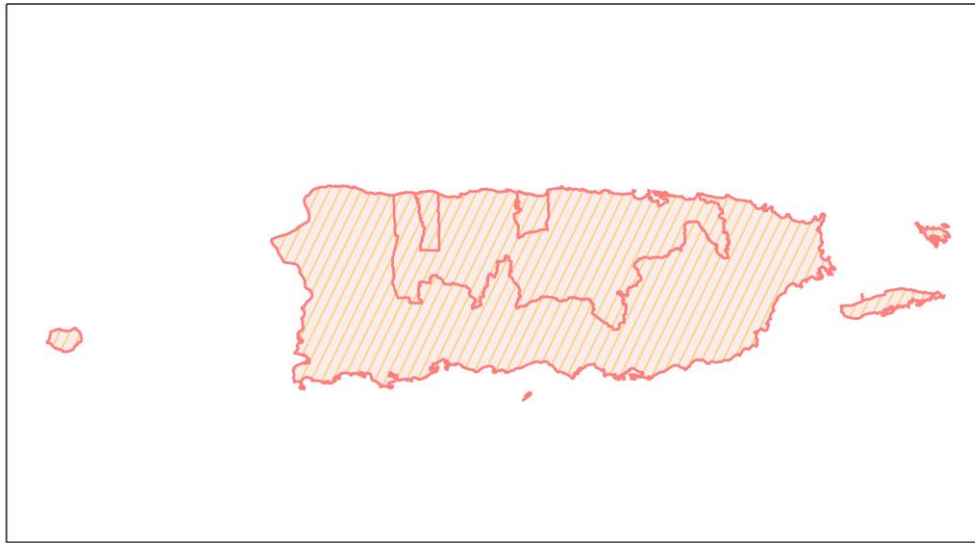
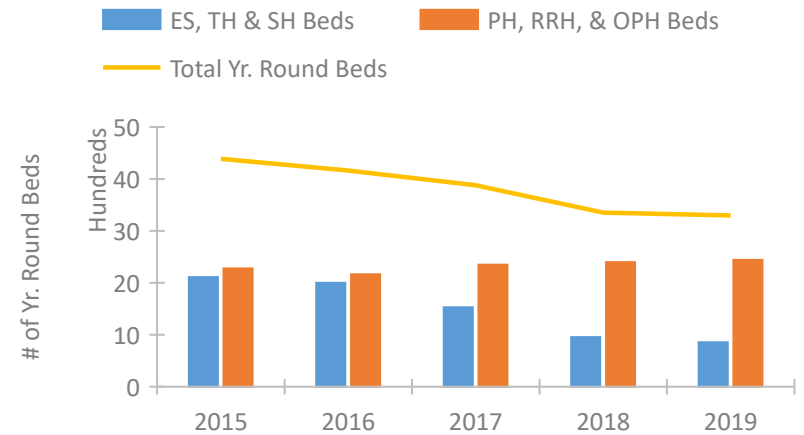


Puerto Rico Continuum of Care Performance Profile

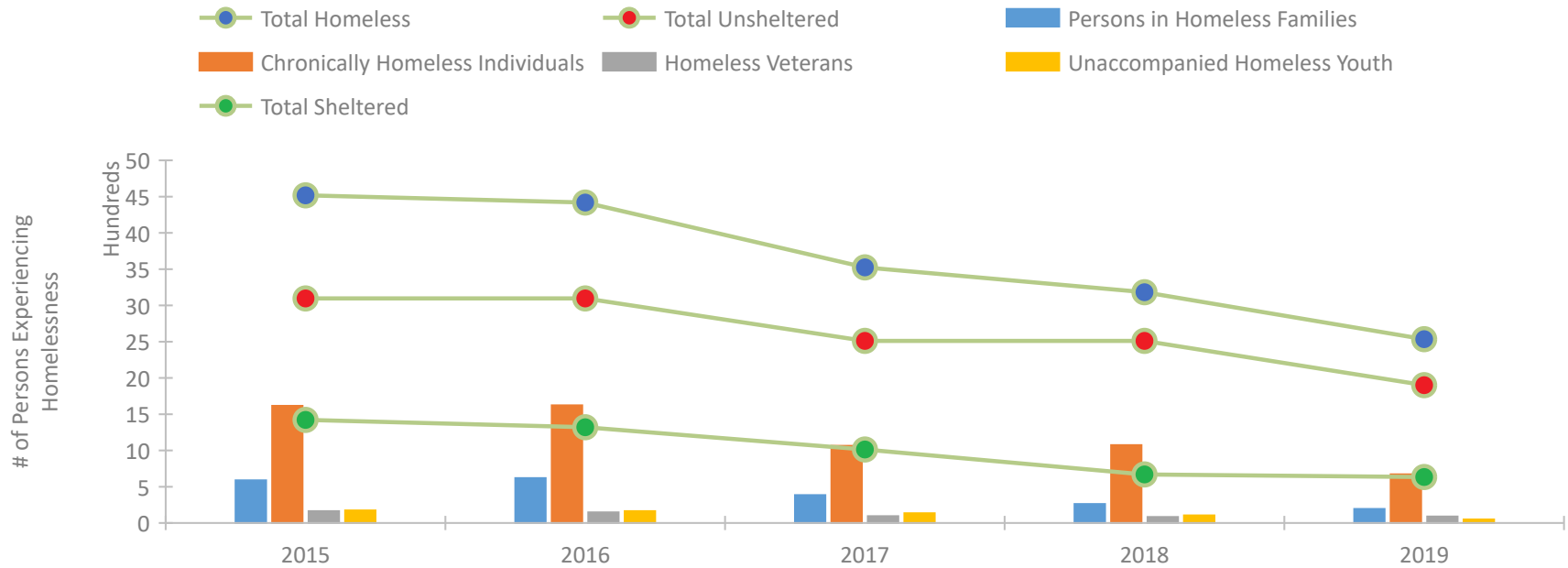


2019 CoC Boundaries 2018 CoC Boundaries

Housing Inventory Count by Program Type

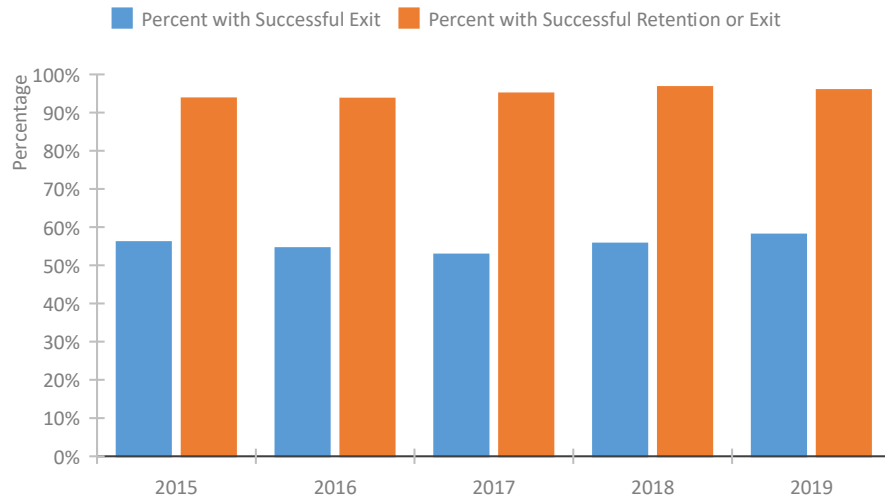


Homeless Population – Point-in-Time (PIT) Count

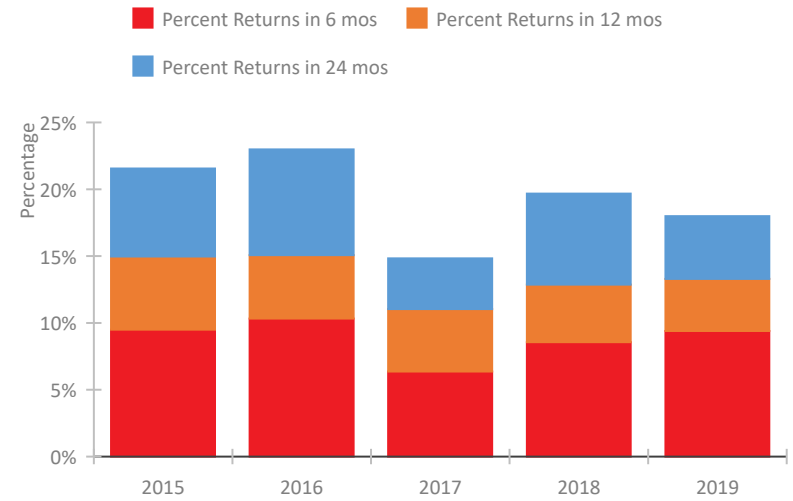


Puerto Rico Continuum of Care Performance Profile

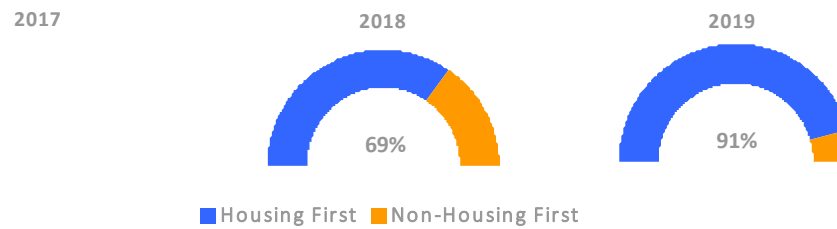
Exits to Permanent Housing by Program Type



Returns to Homelessness Over Time



Proportion of Housing First Projects by Year



Number of Projects by Year

	2017	2018	2019
Housing First Projects	--	47	62
Non-Housing First Projects	--	21	6

Data Summary: Puerto Rico

Point-In-Time Count Summary

	2015	2016	2017	2018	2019	2018-19 Change	% Change
Number of Sheltered Persons in Families	392	422	213	90	124	34	38%
Number of Unsheltered Persons in Families	197	197	171	171	70	-101	-59%
Number of Sheltered Individuals	1,029	899	800	580	511	-69	-12%
Number of Unsheltered Individuals	2,900	2,900	2,341	2,341	1,830	-511	-22%
Total Homeless Persons	4,518	4,418	3,525	3,182	2,535	-647	-20%
Number of Sheltered Families	121	139	74	31	41	10	32%
Number of Unsheltered Families	49	49	44	44	18	-26	-59%
Number of Total Families	170	188	118	75	59	-16	-21%
Sheltered Chronically Homeless Individuals	195	203	142	151	111	-40	-26%
Unsheltered Chronically Homeless Individuals	1,420	1,420	923	923	561	-362	-39%
Total Chronically Homeless Individuals	1,615	1,623	1,065	1,074	672	-402	-37%
Sheltered Veterans	55	37	30	18	18	0	0%
Unsheltered Veterans	109	109	64	64	72	8	12%
Total Veterans	164	146	94	82	90	8	10%
Sheltered Unaccompanied Youth (up to 24)	62	52	46	15	13	-2	-13%
Unsheltered Unaccompanied Youth (up to 24)	111	111	89	89	36	-53	-60%
Total Unaccompanied Youth (up to 24)	173	163	135	104	49	-55	-53%

System Performance Measures Summary

	2015	2016	2017	2018	2019	2018-19 Change	% Change
Rate People Return to Homelessness in 6 Months	9.5%	10.3%	6.4%	8.6%	9.4%	0.8%	N/A
Number of People who are Homeless for the First Time	2,175	2,159	1,808	2,376	1,718	-658	-27.7%
Rate People Exit from ES, SH, TH, and RRH to PH	56.1%	54.5%	52.8%	55.7%	58.1%	2.4%	N/A
Rate People in PSH and OPH Retain or Exit to PH	93.7%	93.6%	95.0%	96.7%	95.9%	-0.8%	N/A

Housing Inventory Count Summary

	2015	2016	2017	2018	2019	2018-19 Change	% Change
Emergency Shelter (ES)	646	645	684	455	430	-25	-5%
Safe Haven (SH)	75	77	32	22	22	0	0%
Transitional Housing (TH)	1,391	1,278	815	478	403	-75	-16%
Permanent Supportive Housing (PSH)	1,721	1,806	1,838	1,931	1,899	-32	-2%
Rapid Re-Housing (RRH)	272	73	231	213	289	76	36%
Other Permanent Housing (OPH)	284	285	280	255	255	0	0%

Award Summary

	2015	2016	2017	2018	2019	2018-19 Change	% Change
Continuum of Care (CoC)	\$18,977,953	\$18,715,977	\$19,383,733	\$18,683,589	\$20,402,554	\$1,718,965	9%
Emergency Solutions Grants (ESG)	\$5,491,845	\$5,179,664	\$6,977,605	\$4,848,531	\$4,881,072	\$32,541	1%