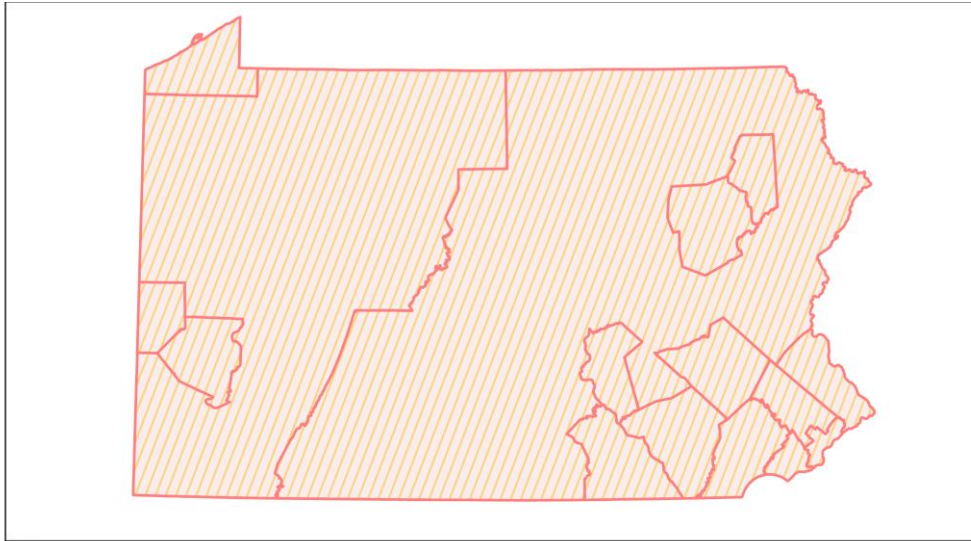
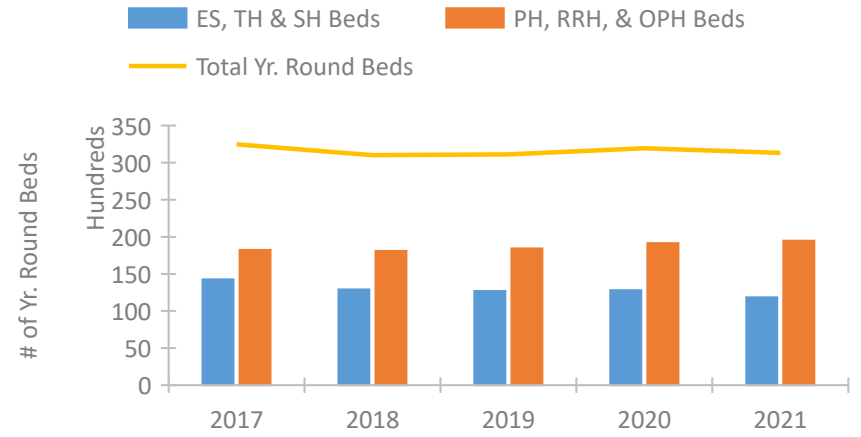


## Pennsylvania Continuum of Care Performance Profile

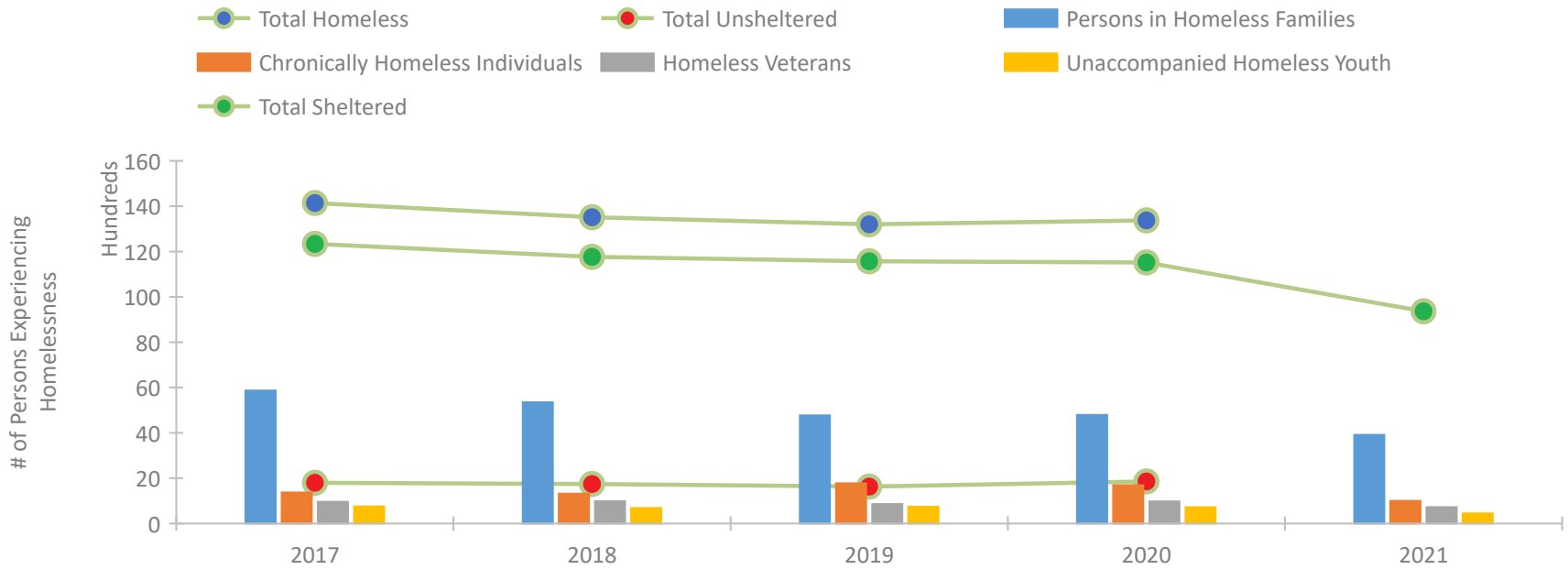


2021 CoC Boundaries 2020 CoC Boundaries

### Housing Inventory Count by Program Type



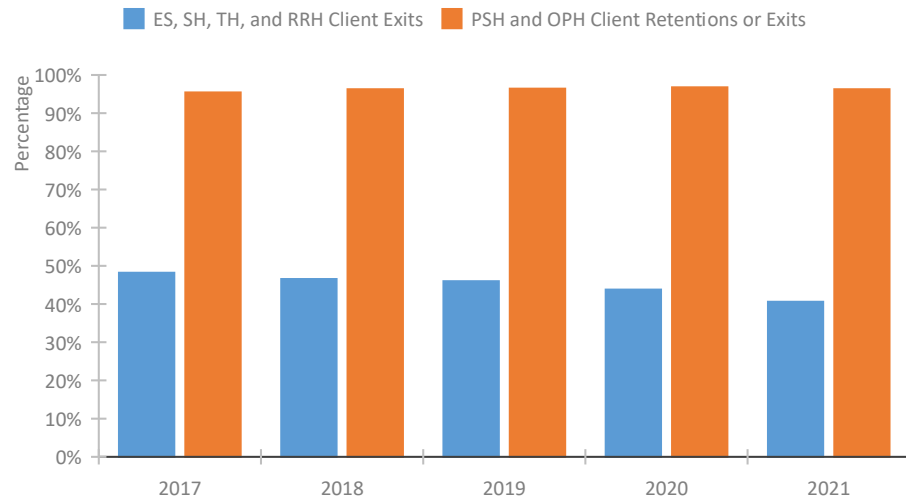
### Homeless Population – Point-in-Time (PIT) Count\*



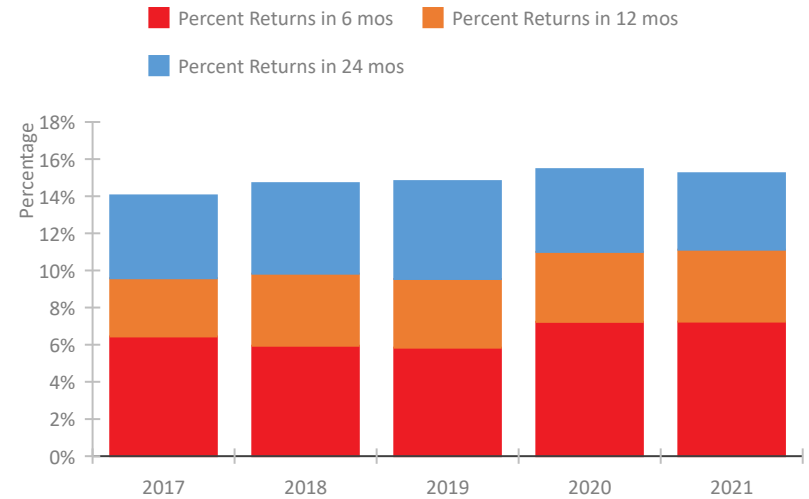
\*In 2021, HUD gave communities the option to cancel or modify the unsheltered survey portion of their counts based on the potential risk of COVID-19 transmission associated with conducting an in-person survey. As a result, HUD has excluded the unsheltered population sub-totals and all unsheltered sub-population data for this reporting period. The user is cautioned that the unsheltered and total homeless counts reported here may be missing data.

## Pennsylvania Continuum of Care Performance Profile

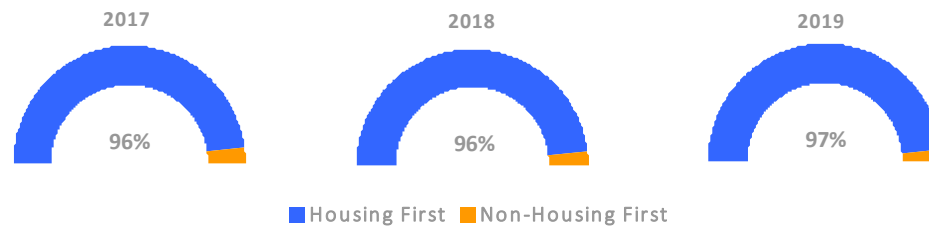
### Exits to Permanent Housing by Program Type



### Returns to Homelessness Over Time



### Proportion of Housing First Projects by Year†



Number of Projects by Year			
	2017	2018	2019
Housing First Projects	475	475	449
Non-Housing First Projects	22	20	16

†2021 Data unavailable at the time of report publication. In 2020 HUD awarded renewal projects noncompetitively, therefore no new data was collected and Housing First data remains the same from 2019 to 2020.

## Data Summary: Pennsylvania

### Point-In-Time Count Summary\*

	2017	2018	2019	2020	2021	2020-21 Change	% Change
Number of Sheltered Persons in Families	5,811	5,319	4,745	4,697	3,914	-783	-17%
Number of Unsheltered Persons in Families	56	30	28	93	0	-93	-100%
Number of Sheltered Individuals	6,529	6,449	6,824	6,821	5,450	-1,371	-20%
Number of Unsheltered Individuals	1,742	1,714	1,602	1,764	--	--	--
<b>Total Homeless Persons</b>	<b>14,138</b>	<b>13,512</b>	<b>13,199</b>	<b>13,375</b>	<b>9,364</b>	<b>-4,011</b>	<b>-30%</b>
Number of Sheltered Families	1,930	1,751	1,562	1,525	1,262	-263	-17%
Number of Unsheltered Families	16	9	7	25	--	--	--
<b>Number of Total Families</b>	<b>1,946</b>	<b>1,760</b>	<b>1,569</b>	<b>1,550</b>	<b>1,262</b>	<b>-288</b>	<b>-19%</b>
Sheltered Chronically Homeless Individuals	768	785	1,136	1,225	999	-226	-18%
Unsheltered Chronically Homeless Individuals	604	533	639	464	--	--	--
<b>Total Chronically Homeless Individuals</b>	<b>1,372</b>	<b>1,318</b>	<b>1,775</b>	<b>1,689</b>	<b>999</b>	<b>-690</b>	<b>-41%</b>
Sheltered Veterans	875	910	820	920	724	-196	-21%
Unsheltered Veterans	88	72	37	57	--	--	--
<b>Total Veterans</b>	<b>963</b>	<b>982</b>	<b>857</b>	<b>977</b>	<b>724</b>	<b>-253</b>	<b>-26%</b>
Sheltered Unaccompanied Youth (up to 24)	608	541	585	544	446	-98	-18%
Unsheltered Unaccompanied Youth (up to 24)	148	143	152	172	--	--	--
<b>Total Unaccompanied Youth (up to 24)</b>	<b>756</b>	<b>684</b>	<b>737</b>	<b>716</b>	<b>446</b>	<b>-270</b>	<b>-38%</b>

### System Performance Measures Summary

	2017	2018	2019	2020	2021	2020-21 Change	% Change
Rate People Return to Homelessness in 6 Months	6.4%	5.9%	5.8%	7.2%	7.3%	0%	N/A
Number of People who are Homeless for the First Time	27,075	29,642	29,523	24,724	25,951	1,227	5%
Rate People Exit from ES, SH, TH, and RRH to PH	48.2%	46.5%	46.0%	43.8%	40.6%	-3.2%	N/A
Rate People in PSH and OPH Retain or Exit to PH	95.4%	96.3%	96.4%	96.7%	96.3%	-0.5%	N/A

### Housing Inventory Count Summary

	2017	2018	2019	2020	2021	2020-21 Change	% Change
Emergency Shelter (ES)	8,248	8,096	8,457	8,787	8,055	-732	-8%
Safe Haven (SH)	192	312	307	308	298	-10	-3%
Transitional Housing (TH)	5,806	4,501	3,923	3,694	3,489	-205	-6%
Permanent Supportive Housing (PSH)	13,163	12,895	12,700	13,225	13,177	-48	0%
Rapid Re-Housing (RRH)	3,891	4,824	5,423	5,530	5,865	335	6%
Other Permanent Housing (OPH)	1,170	375	308	397	429	32	8%

### Award Summary

	2017	2018	2019	2020	2021	2020-21 Change	% Change
<b>Continuum of Care (CoC)</b>	\$102,583,484	\$108,050,831	\$111,355,159	\$115,797,017	\$125,488,616	\$9,691,599	8%
<b>Emergency Solutions Grants (ESG)</b>	\$15,976,164	\$15,205,824	\$15,749,514	\$16,285,586	\$16,340,004	\$54,418	0%
<b>Youth Homelessness Demonstration Program (YHDP)</b>	--	\$3,496,254	\$3,713,729	--	\$8,779,924	--	--

\*In 2021, HUD gave communities the option to cancel or modify the unsheltered survey portion of their counts based on the potential risk of COVID-19 transmission associated with conducting an in-person survey. As a result, HUD has excluded the unsheltered population sub-totals and all unsheltered sub-population data for this reporting period. The user is cautioned that the unsheltered and total homeless counts reported here may be missing data.