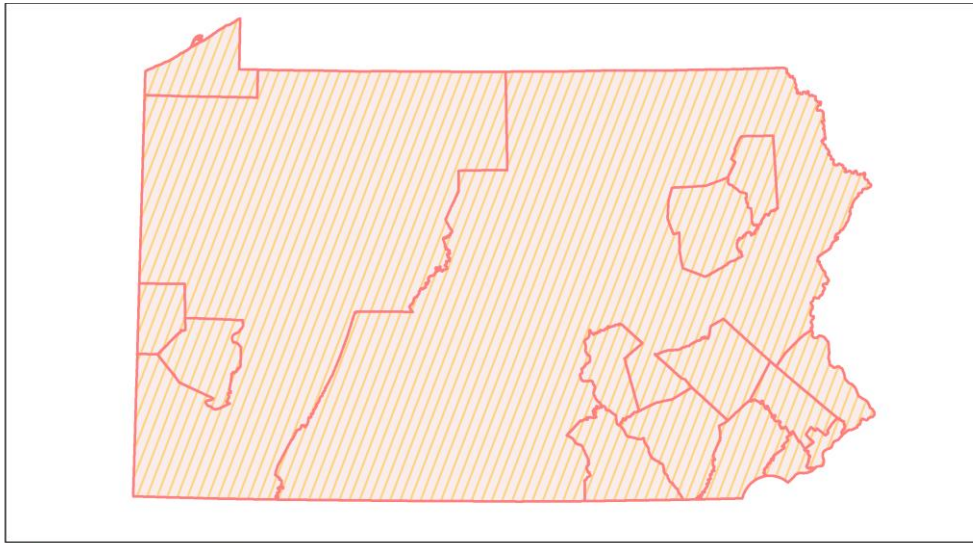
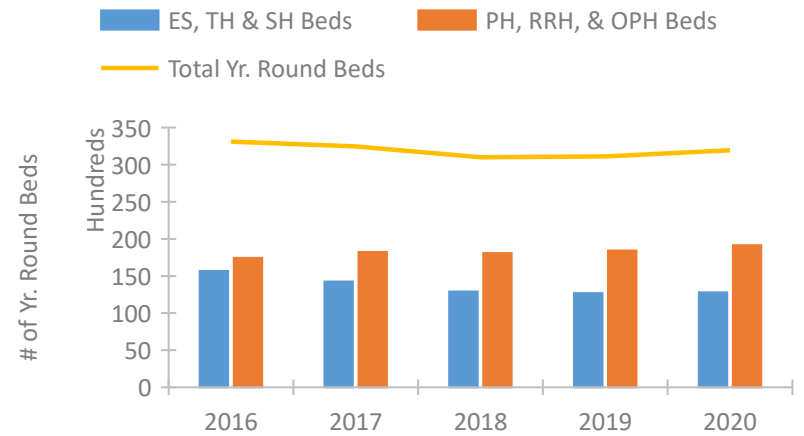


Pennsylvania Continuum of Care Performance Profile

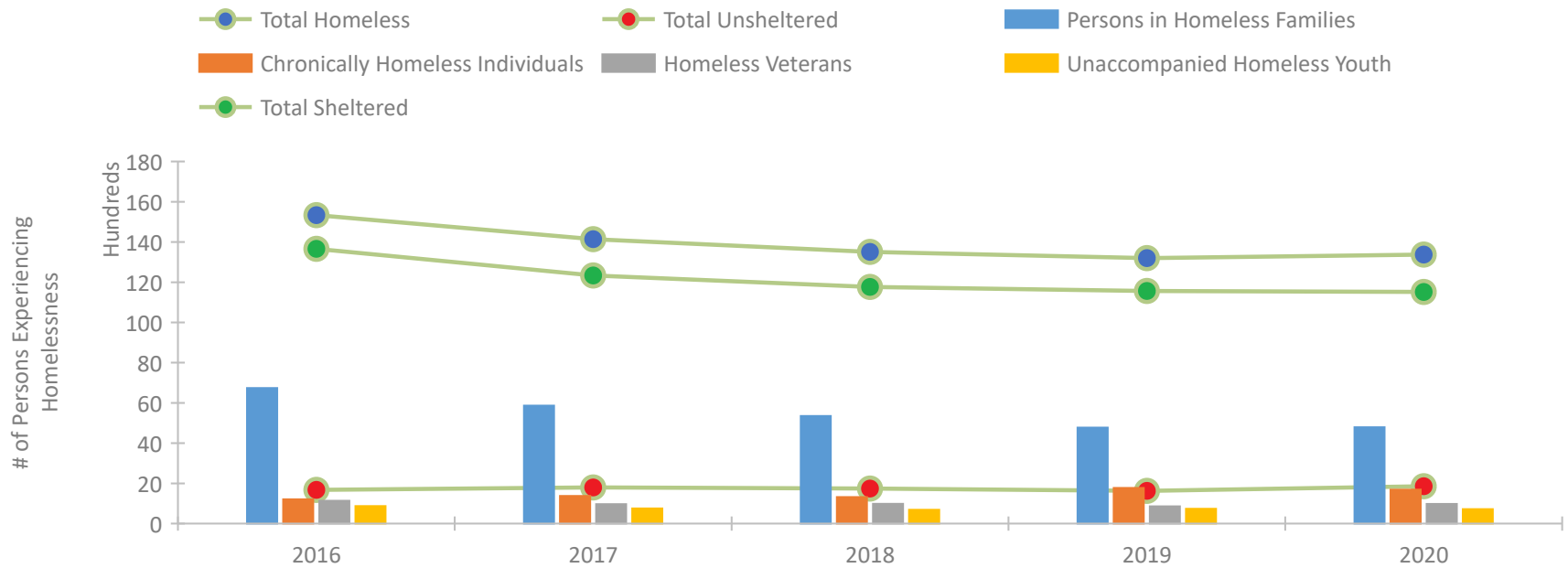


2020 CoC Boundaries 2019 CoC Boundaries

Housing Inventory Count by Program Type



Homeless Population – Point-in-Time (PIT) Count

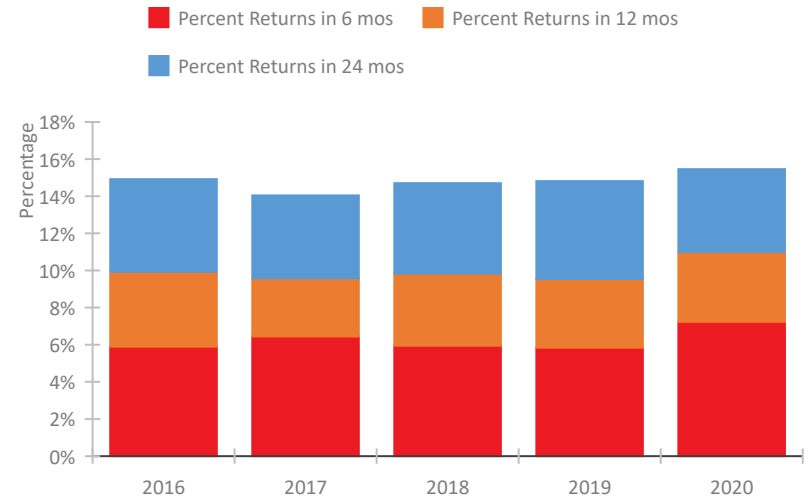


Pennsylvania Continuum of Care Performance Profile

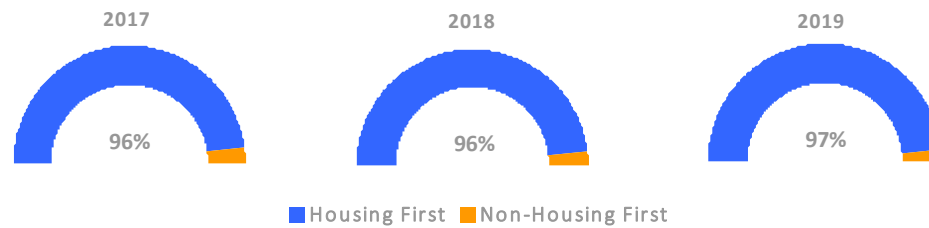
Exits to Permanent Housing by Program Type



Returns to Homelessness Over Time



Proportion of Housing First Projects by Year*



Number of Projects by Year			
	2017	2018	2019
Housing First Projects	475	475	449
Non-Housing First Projects	22	20	16

*In 2020 HUD awarded renewal projects noncompetitively, therefore no new data was collected and Housing First data remains the same from 2019 to 2020.

Data Summary: Pennsylvania

Point-In-Time Count Summary

	2016	2017	2018	2019	2020	2019-20 Change	% Change
Number of Sheltered Persons in Families	6,584	5,811	5,319	4,745	4,697	-48	-1%
Number of Unsheltered Persons in Families	156	56	30	28	93	65	232%
Number of Sheltered Individuals	7,080	6,529	6,449	6,824	6,821	-3	-0%
Number of Unsheltered Individuals	1,519	1,742	1,714	1,602	1,764	162	10%
Total Homeless Persons	15,339	14,138	13,512	13,199	13,375	176	1%
Number of Sheltered Families	2,152	1,930	1,751	1,562	1,525	-37	-2%
Number of Unsheltered Families	48	16	9	7	25	18	257%
Number of Total Families	2,200	1,946	1,760	1,569	1,550	-19	-1%
Sheltered Chronically Homeless Individuals	673	768	785	1,136	1,225	89	8%
Unsheltered Chronically Homeless Individuals	536	604	533	639	464	-175	-27%
Total Chronically Homeless Individuals	1,209	1,372	1,318	1,775	1,689	-86	-5%
Sheltered Veterans	1,088	875	910	820	920	100	12%
Unsheltered Veterans	48	88	72	37	57	20	54%
Total Veterans	1,136	963	982	857	977	120	14%
Sheltered Unaccompanied Youth (up to 24)	736	608	541	585	544	-41	-7%
Unsheltered Unaccompanied Youth (up to 24)	132	148	143	152	172	20	13%
Total Unaccompanied Youth (up to 24)	868	756	684	737	716	-21	-3%

System Performance Measures Summary

	2016	2017	2018	2019	2020	2019-20 Change	% Change
Rate People Return to Homelessness in 6 Months	5.9%	6.4%	5.9%	5.8%	7.2%	1.4%	N/A
Number of People who are Homeless for the First Time	28,524	27,075	29,642	29,523	24,724	-4,799	-16.3%
Rate People Exit from ES, SH, TH, and RRH to PH	44.8%	48.2%	46.5%	46.0%	43.8%	-2.2%	N/A
Rate People in PSH and OPH Retain or Exit to PH	93.4%	95.4%	96.3%	96.4%	96.7%	0.4%	N/A

Housing Inventory Count Summary

	2016	2017	2018	2019	2020	2019-20 Change	% Change
Emergency Shelter (ES)	8,630	8,248	8,096	8,457	8,787	330	4%
Safe Haven (SH)	212	192	312	307	308	1	0%
Transitional Housing (TH)	6,840	5,806	4,501	3,923	3,694	-229	-6%
Permanent Supportive Housing (PSH)	13,059	13,163	12,895	12,700	13,225	525	4%
Rapid Re-Housing (RRH)	3,198	3,891	4,824	5,423	5,530	107	2%
Other Permanent Housing (OPH)	1,115	1,170	375	308	397	89	29%

Award Summary

	2016	2017	2018	2019	2020	2019-20 Change	% Change
Continuum of Care (CoC)	\$100,357,941	\$102,583,484	\$108,050,831	\$111,355,159	\$115,797,017	\$4,441,858	4%
Emergency Solutions Grants (ESG)	\$15,262,743	\$15,976,164	\$15,205,824	\$15,749,514	\$16,285,586	\$536,072	3%
Youth Homelessness Demonstration Program (YHDP)	--	--	\$3,496,254	\$3,713,729	--	--	--