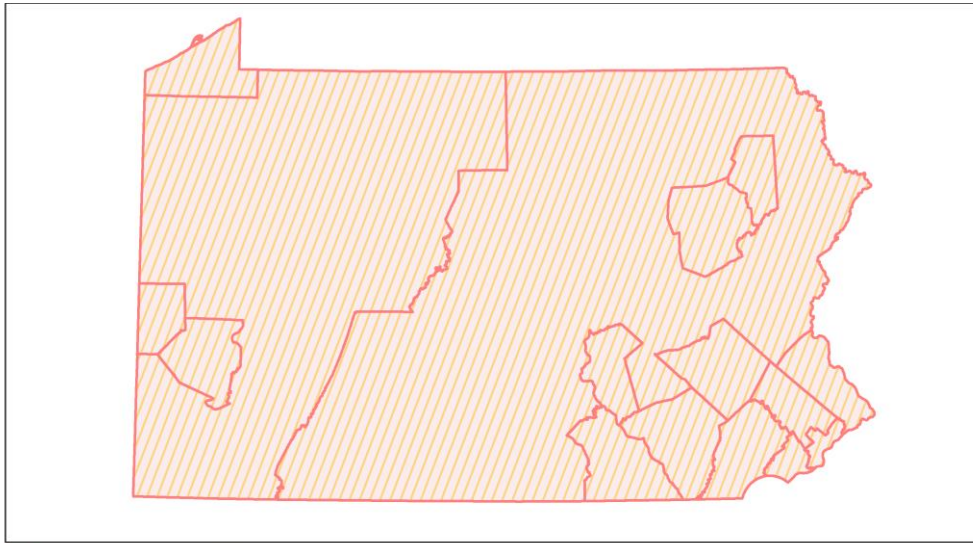
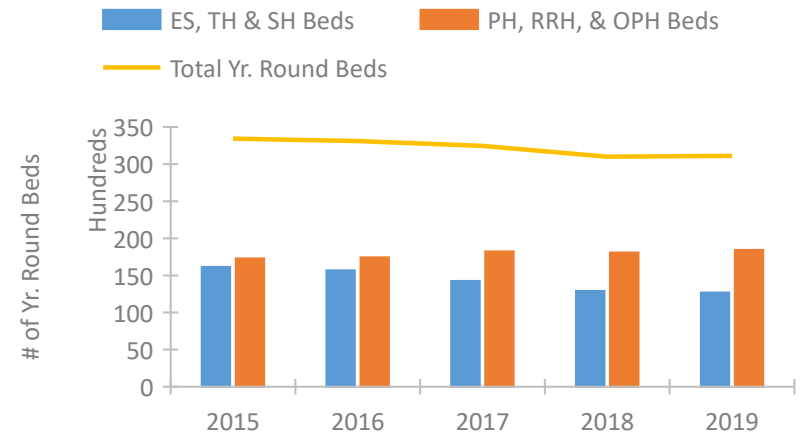


Pennsylvania Continuum of Care Performance Profile

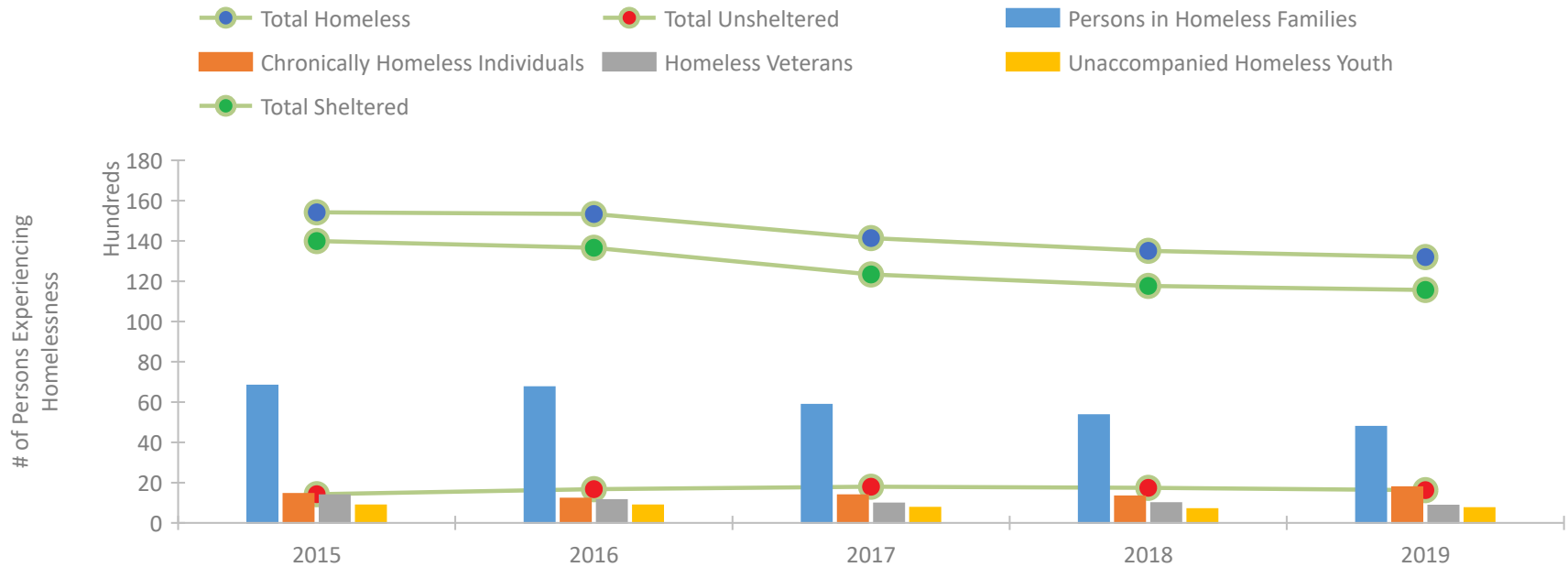


2019 CoC Boundaries 2018 CoC Boundaries

Housing Inventory Count by Program Type

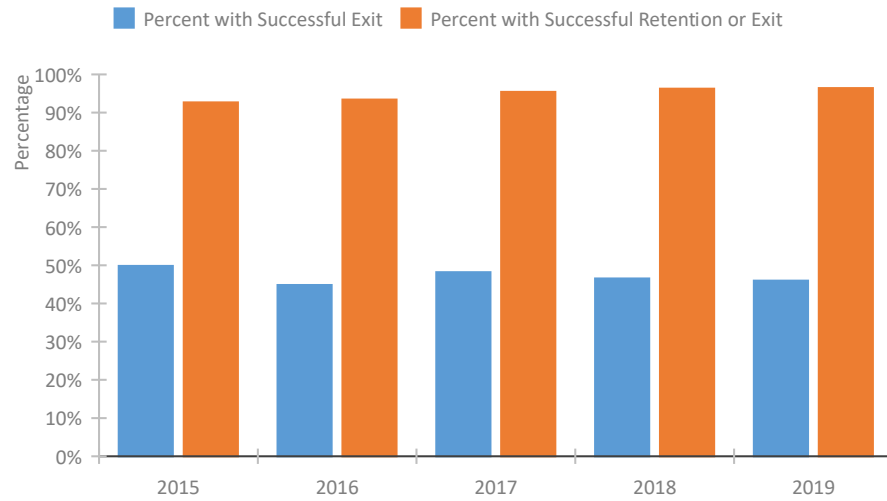


Homeless Population – Point-in-Time (PIT) Count

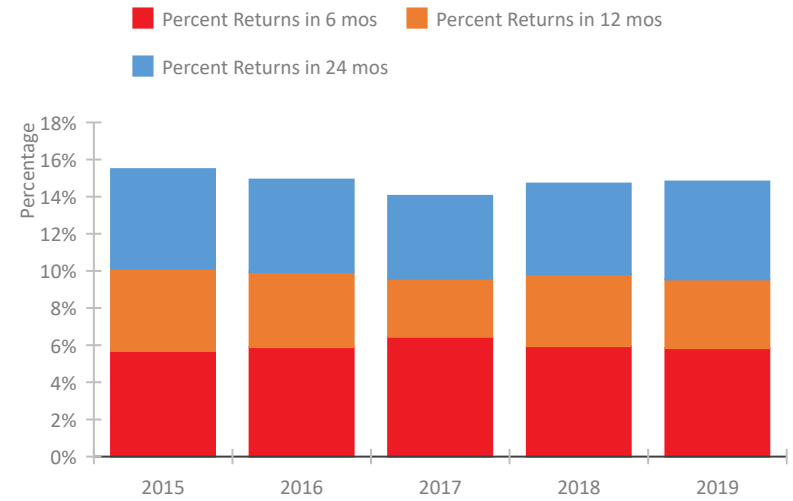


Pennsylvania Continuum of Care Performance Profile

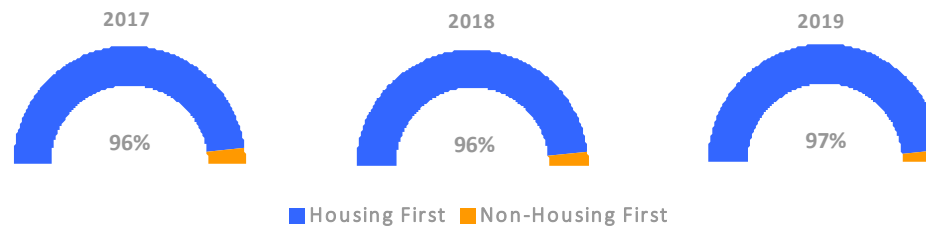
Exits to Permanent Housing by Program Type



Returns to Homelessness Over Time



Proportion of Housing First Projects by Year



Number of Projects by Year

	2017	2018	2019
Housing First Projects	475	475	449
Non-Housing First Projects	22	20	16

Data Summary: Pennsylvania

Point-In-Time Count Summary

	2015	2016	2017	2018	2019	2018-19 Change	% Change
Number of Sheltered Persons in Families	6,717	6,584	5,811	5,319	4,745	-574	-11%
Number of Unsheltered Persons in Families	99	156	56	30	28	-2	-7%
Number of Sheltered Individuals	7,276	7,080	6,529	6,449	6,824	375	6%
Number of Unsheltered Individuals	1,329	1,519	1,742	1,714	1,602	-112	-7%
Total Homeless Persons	15,421	15,339	14,138	13,512	13,199	-313	-2%
Number of Sheltered Families	2,269	2,152	1,930	1,751	1,562	-189	-11%
Number of Unsheltered Families	30	48	16	9	7	-2	-22%
Number of Total Families	2,299	2,200	1,946	1,760	1,569	-191	-11%
Sheltered Chronically Homeless Individuals	909	673	768	785	1,136	351	45%
Unsheltered Chronically Homeless Individuals	533	536	604	533	639	106	20%
Total Chronically Homeless Individuals	1,442	1,209	1,372	1,318	1,775	457	35%
Sheltered Veterans	1,295	1,088	875	910	820	-90	-10%
Unsheltered Veterans	80	48	88	72	37	-35	-49%
Total Veterans	1,375	1,136	963	982	857	-125	-13%
Sheltered Unaccompanied Youth (up to 24)	745	736	608	541	585	44	8%
Unsheltered Unaccompanied Youth (up to 24)	126	132	148	143	152	9	6%
Total Unaccompanied Youth (up to 24)	871	868	756	684	737	53	8%

System Performance Measures Summary

	2015	2016	2017	2018	2019	2018-19 Change	% Change
Rate People Return to Homelessness in 6 Months	5.7%	5.9%	6.4%	5.9%	5.8%	-0.1%	N/A
Number of People who are Homeless for the First Time	27,241	28,524	27,075	29,642	29,523	-119	-0.4%
Rate People Exit from ES, SH, TH, and RRH to PH	49.8%	44.8%	48.2%	46.5%	46.0%	-0.5%	N/A
Rate People in PSH and OPH Retain or Exit to PH	92.7%	93.4%	95.4%	96.3%	96.4%	0.1%	N/A

Housing Inventory Count Summary

	2015	2016	2017	2018	2019	2018-19 Change	% Change
Emergency Shelter (ES)	8,452	8,630	8,248	8,096	8,457	361	4%
Safe Haven (SH)	268	212	192	312	307	-5	-2%
Transitional Housing (TH)	7,420	6,840	5,806	4,501	3,923	-578	-13%
Permanent Supportive Housing (PSH)	13,610	13,059	13,163	12,895	12,700	-195	-2%
Rapid Re-Housing (RRH)	2,536	3,198	3,891	4,824	5,423	599	12%
Other Permanent Housing (OPH)	1,087	1,115	1,170	375	308	-67	-18%

Award Summary

	2015	2016	2017	2018	2019	2018-19 Change	% Change
Continuum of Care (CoC)	\$102,272,769	\$100,357,941	\$102,583,484	\$108,050,831	\$111,355,159	\$3,304,328	3%
Emergency Solutions Grants (ESG)	\$15,303,337	\$15,262,743	\$15,976,164	\$15,205,824	\$15,749,514	\$543,690	4%
Youth Homelessness Demonstration Program (YHDP)	N/A	--	--	\$3,496,254	--	--	--