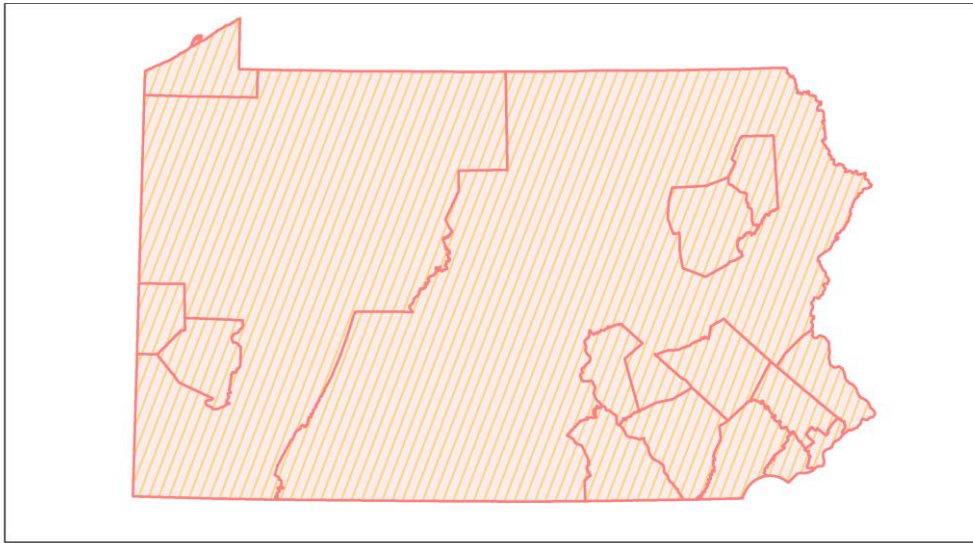
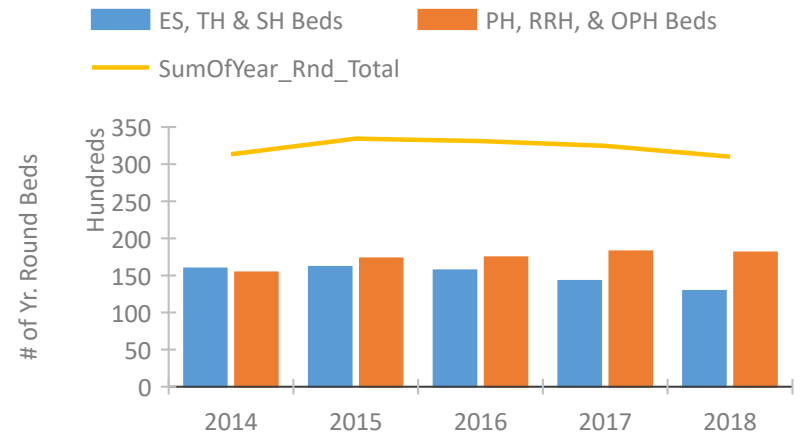


Pennsylvania Continuum of Care Performance Profile

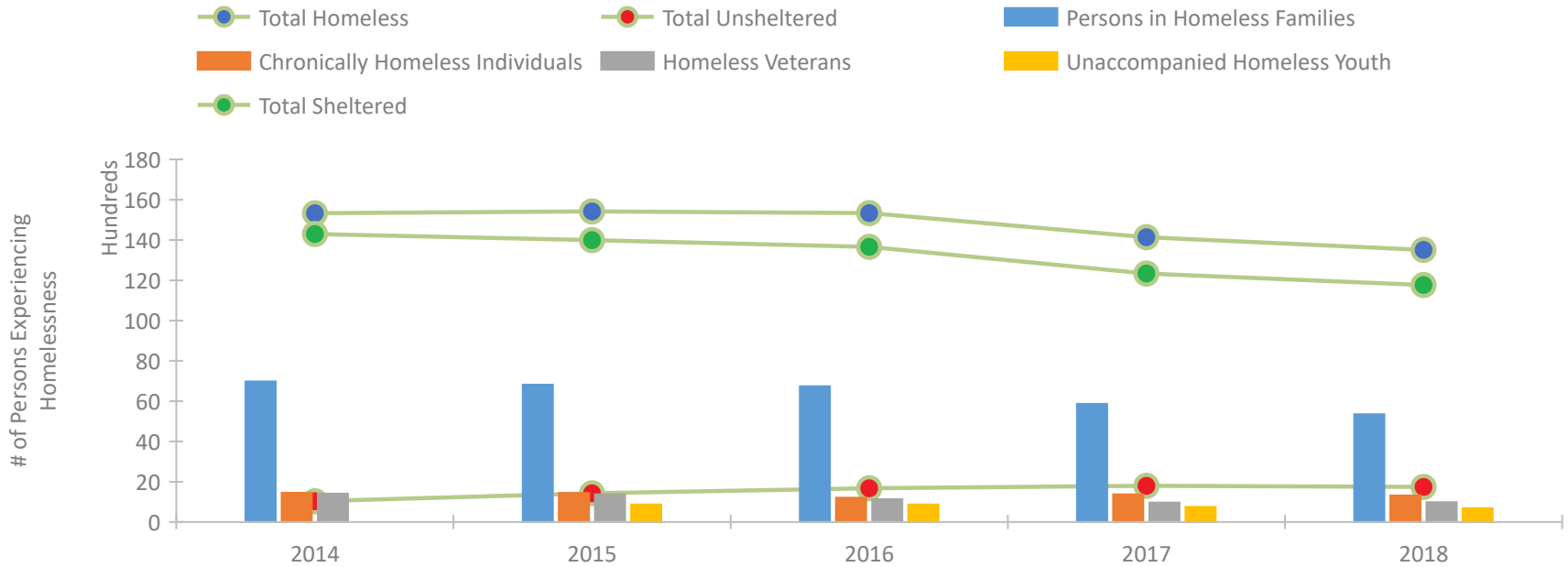


2018 CoC Boundaries 2017 CoC Boundaries

Housing Inventory Count by Program Type

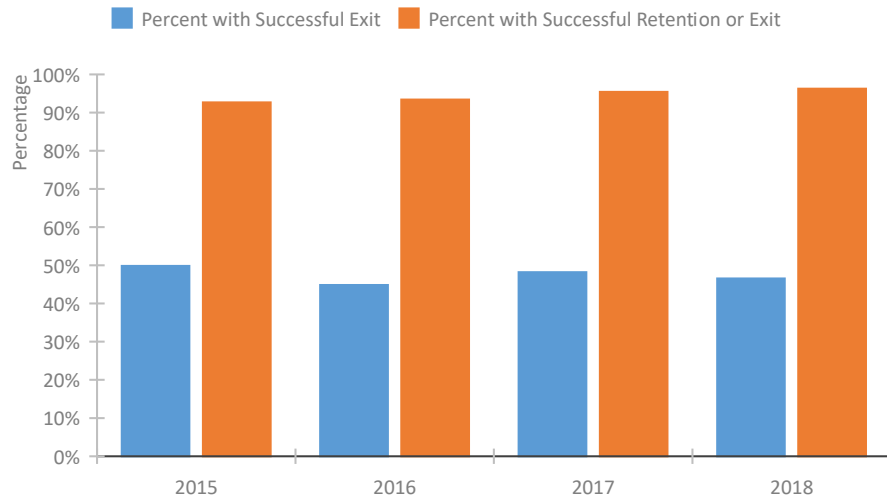


Homeless Population – Point-in-Time (PIT) Count

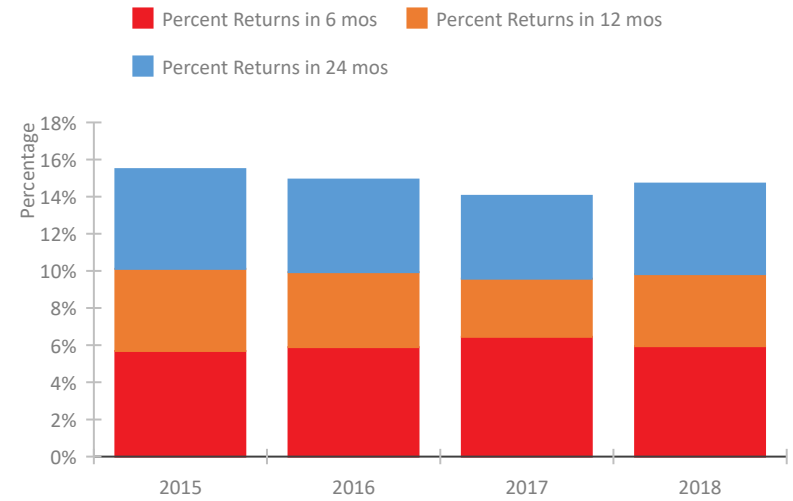


Pennsylvania Continuum of Care Performance Profile

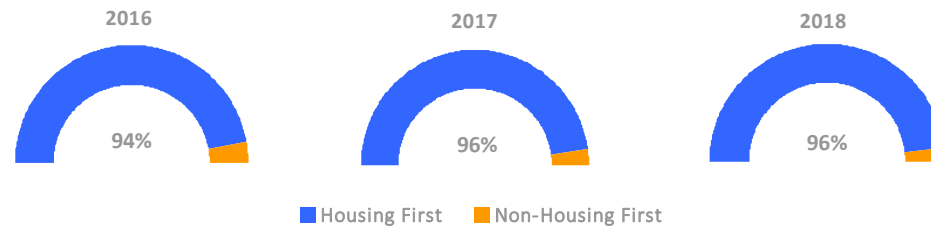
Exits to Permanent Housing by Program Type



Returns to Homelessness Over Time



Proportion of Housing First Projects by Year



Number of Projects by Year

	2016	2017	2018
Housing First Projects	462	475	475
Non-Housing First Projects	27	22	20

Data Summary: Pennsylvania

Point-In-Time Count Summary

	2014	2015	2016	2017	2018	2017-18 Change	% Change
Number of Sheltered Persons in Families	6,881	6,717	6,584	5,811	5,319	-492	-8%
Number of Unsheltered Persons in Families	93	99	156	56	30	-26	-46%
Number of Sheltered Individuals	7,392	7,245	7,025	6,482	6,417	-65	-1%
Number of Unsheltered Individuals	939	1,320	1,501	1,727	1,696	-31	-2%
Total Homeless Persons	15,305	15,381	15,266	14,076	13,462	-614	-4%
Number of Sheltered Families	2,357	2,269	2,152	1,930	1,751	-179	-9%
Number of Unsheltered Families	27	30	48	16	9	-7	-44%
Number of Total Families	2,384	2,299	2,200	1,946	1,760	-186	-10%
Sheltered Chronically Homeless Individuals	983	909	673	768	785	17	2%
Unsheltered Chronically Homeless Individuals	466	533	536	604	533	-71	-12%
Total Chronically Homeless Individuals	1,449	1,442	1,209	1,372	1,318	-54	-4%
Sheltered Veterans	1,336	1,295	1,088	875	910	35	4%
Unsheltered Veterans	75	80	48	88	72	-16	-18%
Total Veterans	1,411	1,375	1,136	963	982	19	2%
Sheltered Unaccompanied Youth (up to 24)	--	745	736	608	541	-67	-11%
Unsheltered Unaccompanied Youth (up to 24)	--	126	132	148	143	-5	-3%
Total Unaccompanied Youth (up to 24)	--	871	868	756	684	-72	-10%

System Performance Measures Summary

	2014	2015	2016	2017	2018	2017-18 Change	% Change
Rate People Return to Homelessness in 6 Months	N/A	5.7%	5.9%	6.4%	5.9%	-0.5%	N/A
Number of People who are Homeless for the First Time	N/A	27,241	28,524	27,075	29,642	2,567	9.5%
Rate People Exit from ES, SH, TH, and RRH to PH	N/A	49.8%	44.8%	48.2%	46.5%	-1.7%	N/A
Rate People in PSH and OPH Retain or Exit to PH	N/A	92.7%	93.4%	95.4%	96.3%	0.8%	N/A

Housing Inventory Count Summary

	2014	2015	2016	2017	2018	2017-18 Change	% Change
Emergency Shelter (ES)	8,053	8,452	8,630	8,248	8,096	-152	-2%
Safe Haven (SH)	282	268	212	192	312	120	62%
Transitional Housing (TH)	7,587	7,420	6,840	5,806	4,501	-1,305	-22%
Permanent Supportive Housing (PSH)	11,862	13,610	13,059	13,163	12,895	-268	-2%
Rapid Re-Housing (RRH)	1,472	2,536	3,198	3,891	4,824	933	24%
Other Permanent Housing (OPH)	2,003	1,087	1,115	1,170	375	-795	-68%

Award Summary

	2014	2015	2016	2017	2018	2017-18 Change	% Change
Continuum of Care (CoC)	\$92,425,789	\$102,272,769	\$100,357,941	\$102,583,484	\$108,050,831	\$5,467,347	5%
Emergency Solutions Grants (ESG)	\$14,208,938	\$15,303,337	\$15,262,743	\$15,976,164	\$15,205,824	(\$770,340)	-5%
Youth Homelessness Demonstration Program (YHDP)	N/A	N/A	--	--	\$3,496,254	--	--