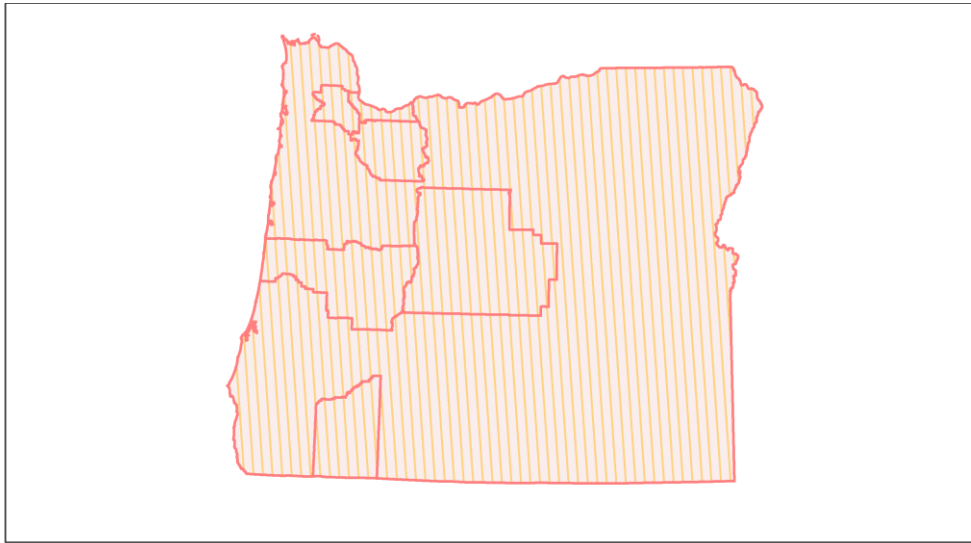
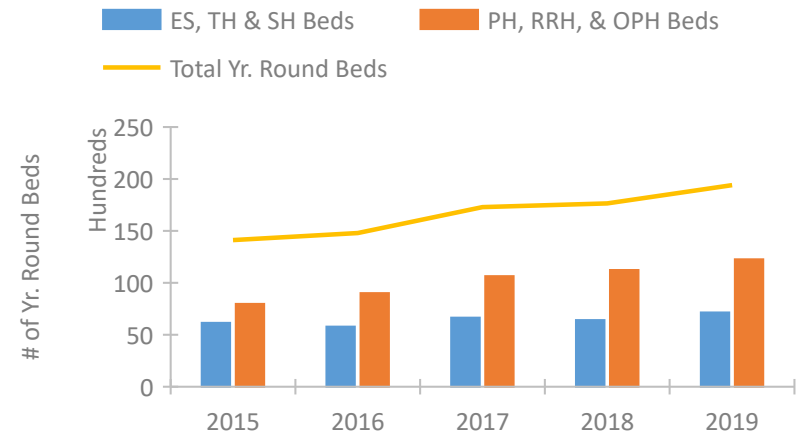


## Oregon Continuum of Care Performance Profile

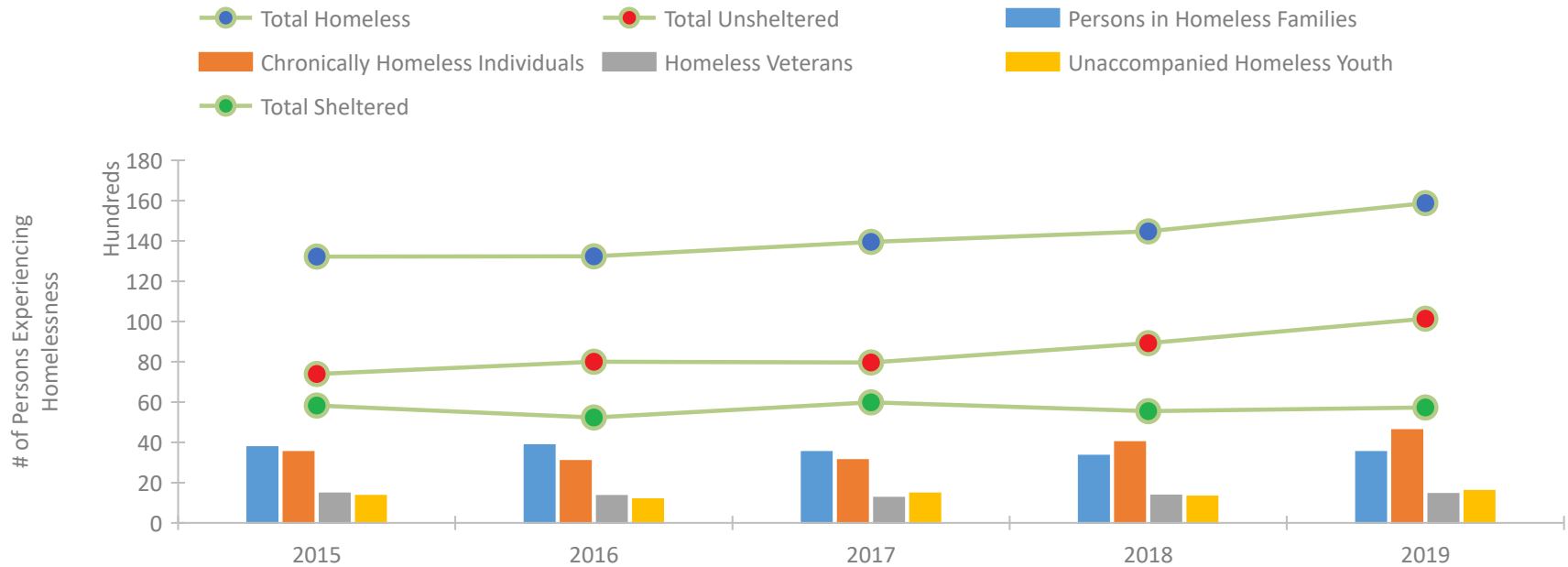


2019 CoC Boundaries 2018 CoC Boundaries

### Housing Inventory Count by Program Type

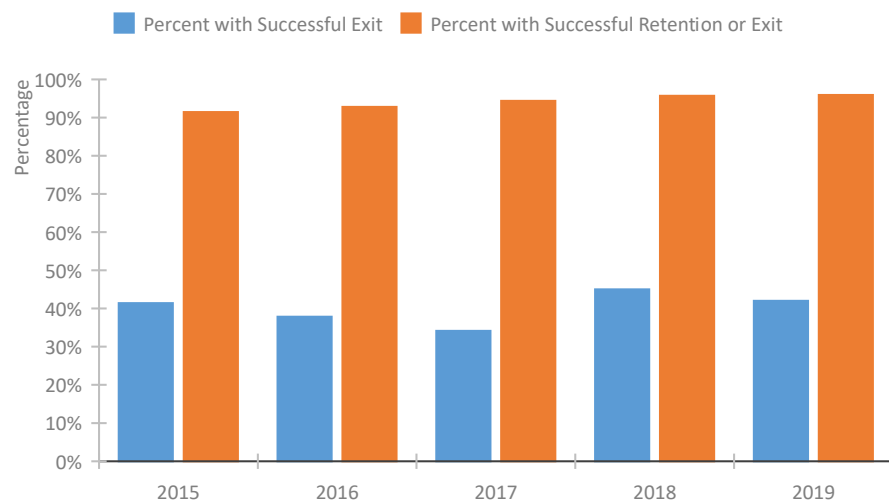


### Homeless Population – Point-in-Time (PIT) Count

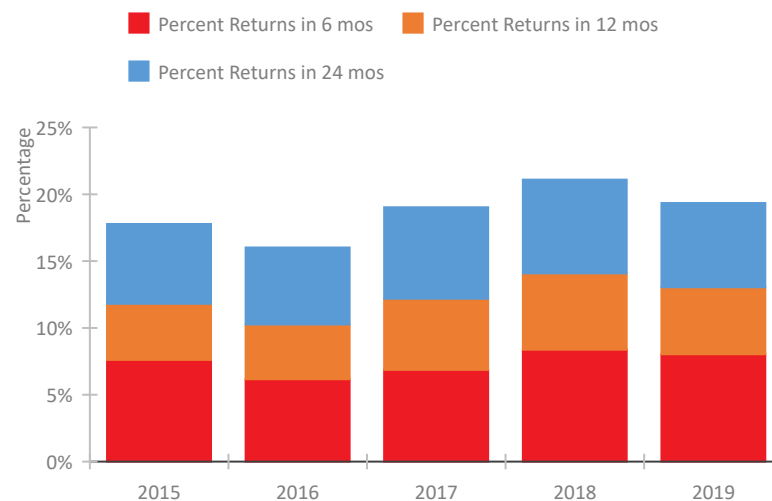


## Oregon Continuum of Care Performance Profile

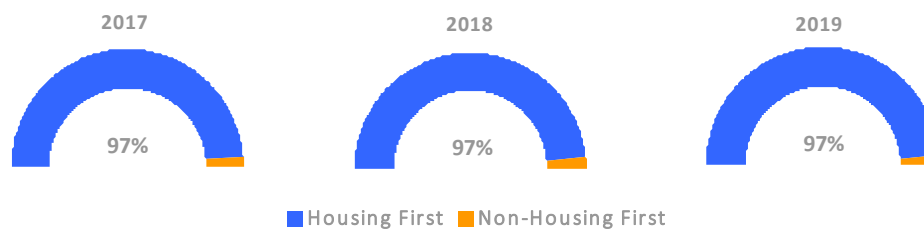
### Exits to Permanent Housing by Program Type



### Returns to Homelessness Over Time



### Proportion of Housing First Projects by Year



### Number of Projects by Year

	2017	2018	2019
Housing First Projects	185	125	115
Non-Housing First Projects	5	4	3

## Data Summary: Oregon

### Point-In-Time Count Summary

	2015	2016	2017	2018	2019	2018-19 Change	% Change
Number of Sheltered Persons in Families	1,783	1,578	1,693	1,524	1,540	16	1%
Number of Unsheltered Persons in Families	1,982	2,281	1,826	1,813	1,982	169	9%
Number of Sheltered Individuals	4,048	3,658	4,293	4,027	4,194	167	4%
Number of Unsheltered Individuals	5,413	5,721	6,141	7,112	8,160	1,048	15%
<b>Total Homeless Persons</b>	<b>13,226</b>	<b>13,238</b>	<b>13,953</b>	<b>14,476</b>	<b>15,876</b>	<b>1,400</b>	10%
Number of Sheltered Families	586	506	540	502	507	5	1%
Number of Unsheltered Families	593	809	543	606	640	34	6%
<b>Number of Total Families</b>	<b>1,179</b>	<b>1,315</b>	<b>1,083</b>	<b>1,108</b>	<b>1,147</b>	<b>39</b>	4%
Sheltered Chronically Homeless Individuals	921	506	768	862	937	75	9%
Unsheltered Chronically Homeless Individuals	2,600	2,571	2,352	3,151	3,672	521	17%
<b>Total Chronically Homeless Individuals</b>	<b>3,521</b>	<b>3,077</b>	<b>3,120</b>	<b>4,013</b>	<b>4,609</b>	<b>596</b>	15%
Sheltered Veterans	769	603	583	600	611	11	2%
Unsheltered Veterans	695	738	668	763	827	64	8%
<b>Total Veterans</b>	<b>1,464</b>	<b>1,341</b>	<b>1,251</b>	<b>1,363</b>	<b>1,438</b>	<b>75</b>	6%
Sheltered Unaccompanied Youth (up to 24)	448	418	507	490	438	-52	-11%
Unsheltered Unaccompanied Youth (up to 24)	902	757	955	819	1,152	333	41%
<b>Total Unaccompanied Youth (up to 24)</b>	<b>1,350</b>	<b>1,175</b>	<b>1,462</b>	<b>1,309</b>	<b>1,590</b>	<b>281</b>	21%

### System Performance Measures Summary

	2015	2016	2017	2018	2019	2018-19 Change	% Change
Rate People Return to Homelessness in 6 Months	7.6%	6.2%	6.9%	8.4%	8.0%	-0.3%	N/A
Number of People who are Homeless for the First Time	16,819	19,199	22,306	16,150	15,061	-1,089	-6.7%
Rate People Exit from ES, SH, TH, and RRH to PH	41.4%	37.8%	34.1%	45.0%	42.0%	-3%	N/A
Rate People in PSH and OPH Retain or Exit to PH	91.4%	92.8%	94.4%	95.7%	95.9%	0.2%	N/A

### Housing Inventory Count Summary

	2015	2016	2017	2018	2019	2018-19 Change	% Change
Emergency Shelter (ES)	3,062	3,261	4,107	4,174	4,406	232	6%
Safe Haven (SH)	10	10	10	10	10	0	0%
Transitional Housing (TH)	3,072	2,520	2,531	2,235	2,731	496	22%
Permanent Supportive Housing (PSH)	5,889	6,492	7,232	7,426	7,714	288	4%
Rapid Re-Housing (RRH)	1,871	2,394	3,267	3,621	4,205	584	16%
Other Permanent Housing (OPH)	79	122	145	190	352	162	85%

### Award Summary

	2015	2016	2017	2018	2019	2018-19 Change	% Change
<b>Continuum of Care (CoC)</b>	\$31,894,306	\$34,686,509	\$36,289,447	\$38,596,299	\$40,274,982	\$1,678,683	4%
<b>Emergency Solutions Grants (ESG)</b>	\$2,796,926	\$2,819,732	\$3,061,922	\$2,861,638	\$2,981,474	\$119,836	4%
<b>Youth Homelessness Demonstration Program (YHDP)</b>	N/A	--	--	\$1,776,632	--	--	--