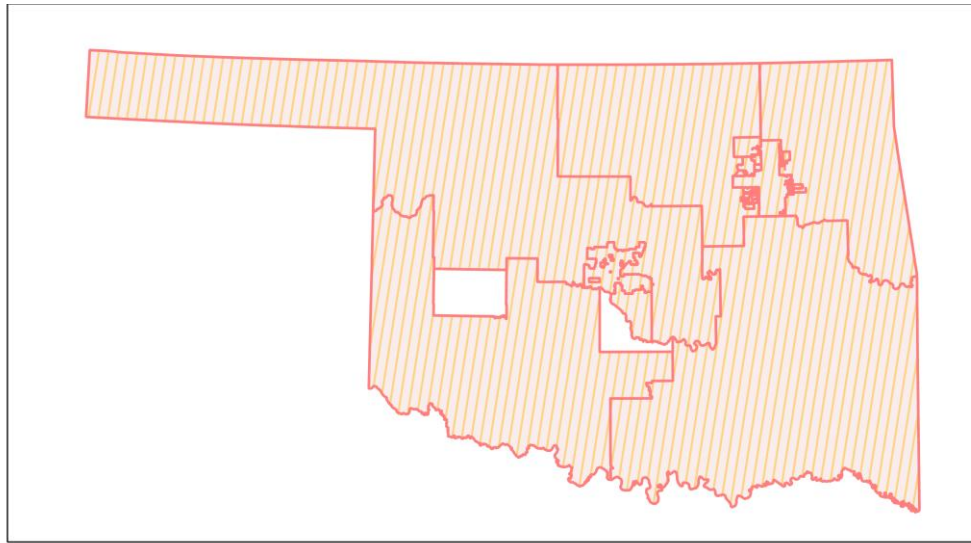
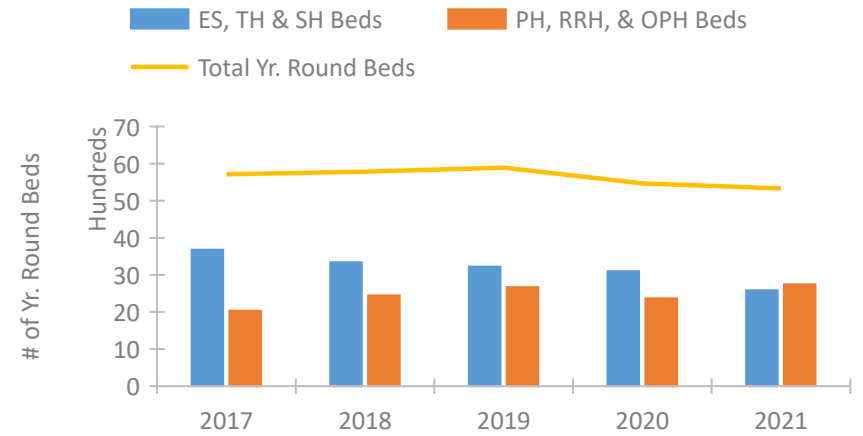


## Oklahoma Continuum of Care Performance Profile

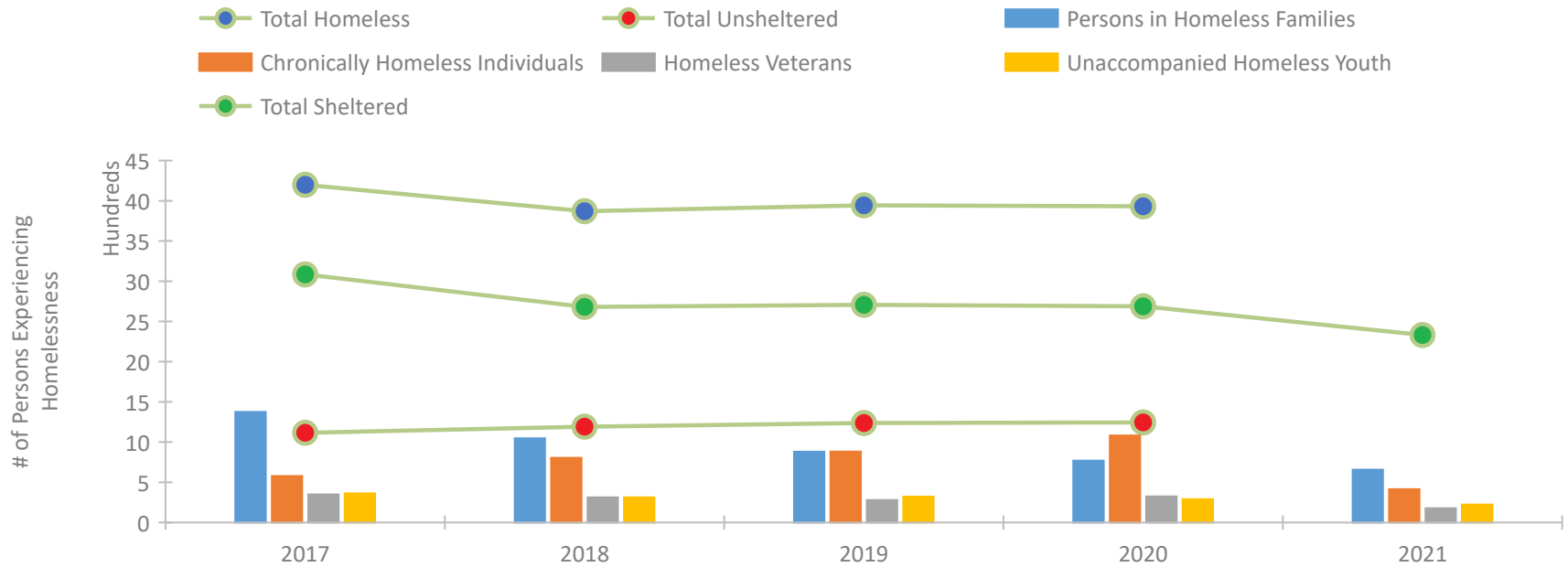


2021 CoC Boundaries 2020 CoC Boundaries

### Housing Inventory Count by Program Type



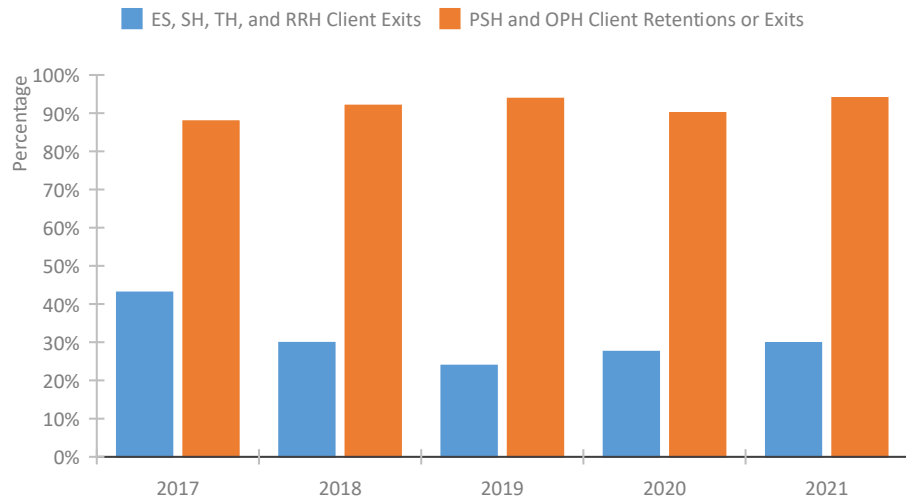
### Homeless Population – Point-in-Time (PIT) Count\*



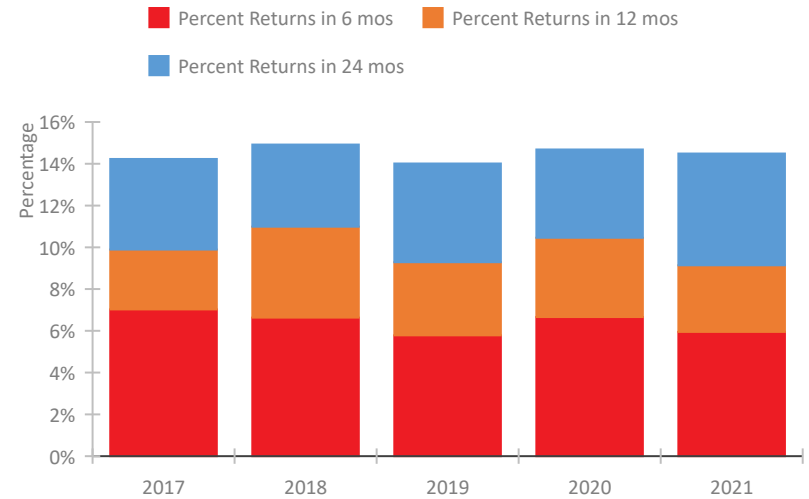
\*In 2021, HUD gave communities the option to cancel or modify the unsheltered survey portion of their counts based on the potential risk of COVID-19 transmission associated with conducting an in-person survey. As a result, HUD has excluded the unsheltered population sub-totals and all unsheltered sub-population data for this reporting period. The user is cautioned that the unsheltered and total homeless counts reported here may be missing data.

## Oklahoma Continuum of Care Performance Profile

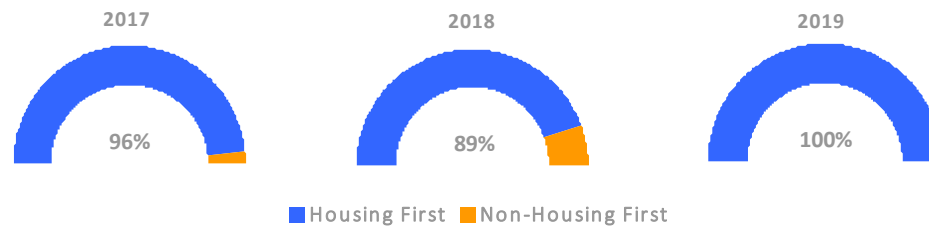
### Exits to Permanent Housing by Program Type



### Returns to Homelessness Over Time



### Proportion of Housing First Projects by Year†



Number of Projects by Year			
	2017	2018	2019
Housing First Projects	55	56	53
Non-Housing First Projects	2	7	0

†2021 Data unavailable at the time of report publication. In 2020 HUD awarded renewal projects noncompetitively, therefore no new data was collected and Housing First data remains the same from 2019 to 2020.

## Data Summary: Oklahoma

### Point-In-Time Count Summary\*

	2017	2018	2019	2020	2021	2020-21 Change	% Change
Number of Sheltered Persons in Families	1,092	832	750	684	657	-27	-4%
Number of Unsheltered Persons in Families	283	216	131	86	0	-86	-100%
Number of Sheltered Individuals	1,992	1,848	1,957	2,004	1,674	-330	-16%
Number of Unsheltered Individuals	832	975	1,106	1,158	--	--	--
<b>Total Homeless Persons</b>	<b>4,199</b>	<b>3,871</b>	<b>3,944</b>	<b>3,932</b>	<b>2,331</b>	<b>-1,601</b>	<b>-41%</b>
Number of Sheltered Families	369	257	253	223	201	-22	-10%
Number of Unsheltered Families	111	70	47	32	--	--	--
<b>Number of Total Families</b>	<b>480</b>	<b>327</b>	<b>300</b>	<b>255</b>	<b>201</b>	<b>-54</b>	<b>-21%</b>
Sheltered Chronically Homeless Individuals	295	257	302	425	414	-11	-3%
Unsheltered Chronically Homeless Individuals	283	547	580	658	--	--	--
<b>Total Chronically Homeless Individuals</b>	<b>578</b>	<b>804</b>	<b>882</b>	<b>1,083</b>	<b>414</b>	<b>-669</b>	<b>-62%</b>
Sheltered Veterans	235	206	203	202	178	-24	-12%
Unsheltered Veterans	114	107	77	123	--	--	--
<b>Total Veterans</b>	<b>349</b>	<b>313</b>	<b>280</b>	<b>325</b>	<b>178</b>	<b>-147</b>	<b>-45%</b>
Sheltered Unaccompanied Youth (up to 24)	253	226	234	191	223	32	17%
Unsheltered Unaccompanied Youth (up to 24)	110	87	88	99	--	--	--
<b>Total Unaccompanied Youth (up to 24)</b>	<b>363</b>	<b>313</b>	<b>322</b>	<b>290</b>	<b>223</b>	<b>-67</b>	<b>-23%</b>

### System Performance Measures Summary

	2017	2018	2019	2020	2021	2020-21 Change	% Change
Rate People Return to Homelessness in 6 Months	7.0%	6.6%	5.8%	6.7%	5.9%	-0.7%	N/A
Number of People who are Homeless for the First Time	8,804	8,919	6,992	5,587	9,140	3,553	63.6%
Rate People Exit from ES, SH, TH, and RRH to PH	43.0%	29.8%	23.9%	27.5%	29.8%	2.3%	N/A
Rate People in PSH and OPH Retain or Exit to PH	87.9%	92.0%	93.8%	90.0%	94.0%	3.9%	N/A

### Housing Inventory Count Summary

	2017	2018	2019	2020	2021	2020-21 Change	% Change
Emergency Shelter (ES)	2,829	2,646	2,600	2,440	1,924	-516	-21%
Transitional Housing (TH)	824	668	613	636	662	26	4%
Permanent Supportive Housing (PSH)	1,679	1,917	1,916	1,859	1,785	-74	-4%
Rapid Re-Housing (RRH)	345	513	755	509	960	451	89%

### Award Summary

	2017	2018	2019	2020	2021	2020-21 Change	% Change
<b>Continuum of Care (CoC)</b>	\$8,123,906	\$8,546,252	\$8,727,820	\$9,062,360	\$10,543,446	\$1,481,086	16%
<b>Emergency Solutions Grants (ESG)</b>	\$2,486,106	\$2,194,057	\$2,284,897	\$2,393,768	\$2,423,209	\$29,441	1%
<b>Youth Homelessness Demonstration Program (YHDP)</b>	--	--	\$2,965,509	--	\$5,380,192	--	--

\*In 2021, HUD gave communities the option to cancel or modify the unsheltered survey portion of their counts based on the potential risk of COVID-19 transmission associated with conducting an in-person survey. As a result, HUD has excluded the unsheltered population sub-totals and all unsheltered sub-population data for this reporting period. The user is cautioned that the unsheltered and total homeless counts reported here may be missing data.