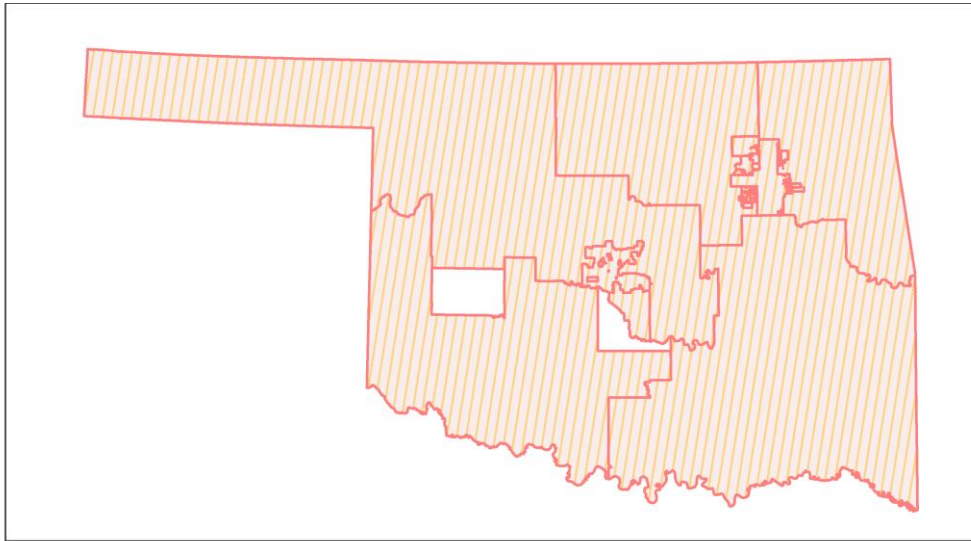
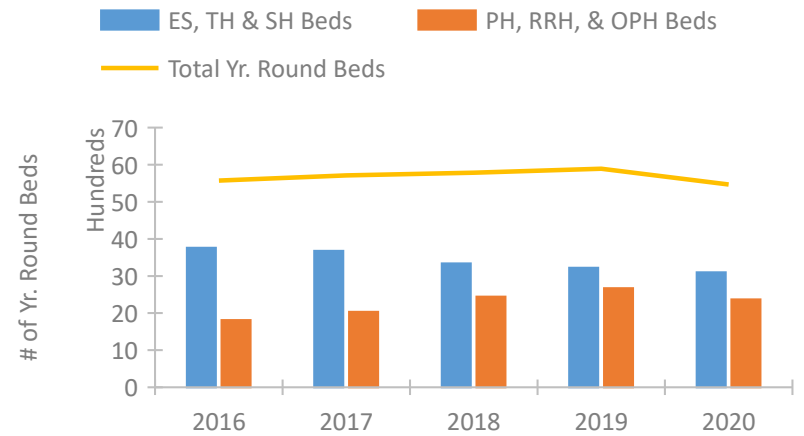


## Oklahoma Continuum of Care Performance Profile

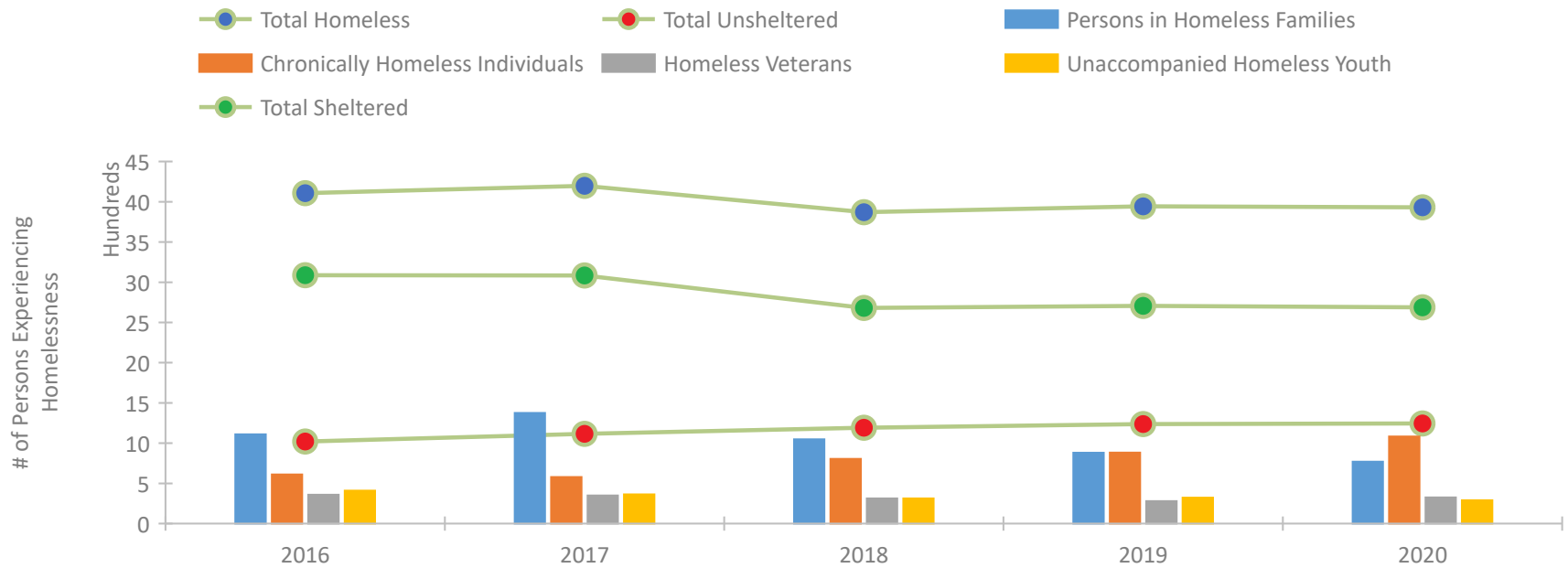


2020 CoC Boundaries 2019 CoC Boundaries

### Housing Inventory Count by Program Type



### Homeless Population – Point-in-Time (PIT) Count

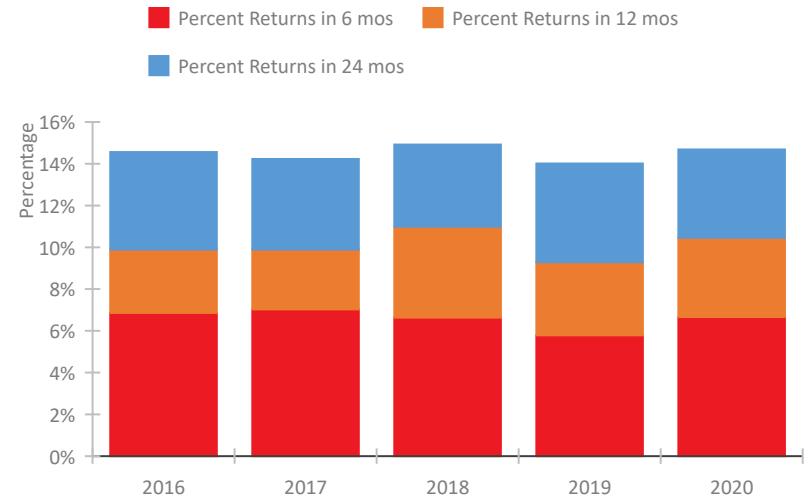


## Oklahoma Continuum of Care Performance Profile

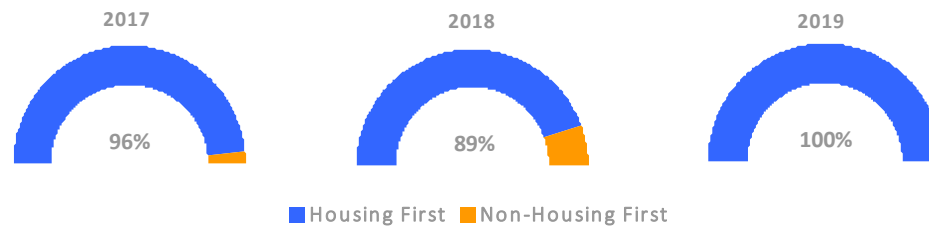
### Exits to Permanent Housing by Program Type



### Returns to Homelessness Over Time



### Proportion of Housing First Projects by Year\*



Number of Projects by Year			
	2017	2018	2019
Housing First Projects	55	56	53
Non-Housing First Projects	2	7	0

\*In 2020 HUD awarded renewal projects noncompetitively, therefore no new data was collected and Housing First data remains the same from 2019 to 2020.

## Data Summary: Oklahoma

### Point-In-Time Count Summary

	2016	2017	2018	2019	2020	2019-20 Change	% Change
Number of Sheltered Persons in Families	967	1,092	832	750	684	-66	-9%
Number of Unsheltered Persons in Families	143	283	216	131	86	-45	-34%
Number of Sheltered Individuals	2,120	1,992	1,848	1,957	2,004	47	2%
Number of Unsheltered Individuals	877	832	975	1,106	1,158	52	5%
<b>Total Homeless Persons</b>	<b>4,107</b>	<b>4,199</b>	<b>3,871</b>	<b>3,944</b>	<b>3,932</b>	<b>-12</b>	<b>-0%</b>
Number of Sheltered Families	313	369	257	253	223	-30	-12%
Number of Unsheltered Families	47	111	70	47	32	-15	-32%
<b>Number of Total Families</b>	<b>360</b>	<b>480</b>	<b>327</b>	<b>300</b>	<b>255</b>	<b>-45</b>	<b>-15%</b>
Sheltered Chronically Homeless Individuals	329	295	257	302	425	123	41%
Unsheltered Chronically Homeless Individuals	281	283	547	580	658	78	13%
<b>Total Chronically Homeless Individuals</b>	<b>610</b>	<b>578</b>	<b>804</b>	<b>882</b>	<b>1,083</b>	<b>201</b>	<b>23%</b>
Sheltered Veterans	260	235	206	203	202	-1	-0%
Unsheltered Veterans	98	114	107	77	123	46	60%
<b>Total Veterans</b>	<b>358</b>	<b>349</b>	<b>313</b>	<b>280</b>	<b>325</b>	<b>45</b>	<b>16%</b>
Sheltered Unaccompanied Youth (up to 24)	266	253	226	234	191	-43	-18%
Unsheltered Unaccompanied Youth (up to 24)	144	110	87	88	99	11	12%
<b>Total Unaccompanied Youth (up to 24)</b>	<b>410</b>	<b>363</b>	<b>313</b>	<b>322</b>	<b>290</b>	<b>-32</b>	<b>-10%</b>

### System Performance Measures Summary

	2016	2017	2018	2019	2020	2019-20 Change	% Change
Rate People Return to Homelessness in 6 Months	6.9%	7.0%	6.6%	5.8%	6.7%	0.9%	N/A
Number of People who are Homeless for the First Time	10,134	8,804	8,919	6,992	5,587	-1,405	-20.1%
Rate People Exit from ES, SH, TH, and RRH to PH	32.0%	43.0%	29.8%	23.9%	27.5%	3.6%	N/A
Rate People in PSH and OPH Retain or Exit to PH	88.6%	87.9%	92.0%	93.8%	90.0%	-3.7%	N/A

### Housing Inventory Count Summary

	2016	2017	2018	2019	2020	2019-20 Change	% Change
Emergency Shelter (ES)	2,914	2,829	2,646	2,600	2,440	-160	-6%
Safe Haven (SH)	25	25	25	8	25	17	212%
Transitional Housing (TH)	823	824	668	613	636	23	4%
Permanent Supportive Housing (PSH)	1,572	1,679	1,917	1,916	1,859	-57	-3%
Rapid Re-Housing (RRH)	227	345	513	755	509	-246	-33%

### Award Summary

	2016	2017	2018	2019	2020	2019-20 Change	% Change
<b>Continuum of Care (CoC)</b>	\$7,891,816	\$8,123,906	\$8,546,252	\$8,727,820	\$9,062,360	\$334,540	4%
<b>Emergency Solutions Grants (ESG)</b>	\$2,195,352	\$2,486,106	\$2,194,057	\$2,284,897	\$2,393,768	\$108,871	5%
<b>Youth Homelessness Demonstration Program (YHDP)</b>	--	--	--	\$2,965,509	--	--	--