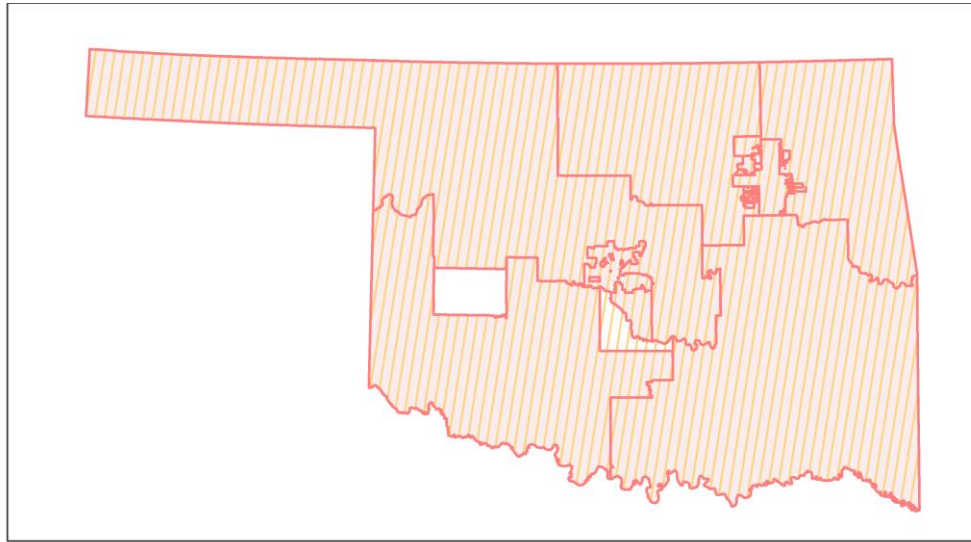
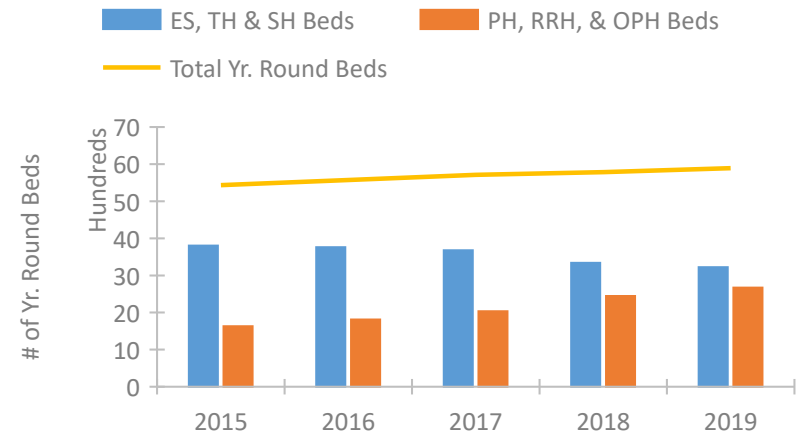


Oklahoma Continuum of Care Performance Profile

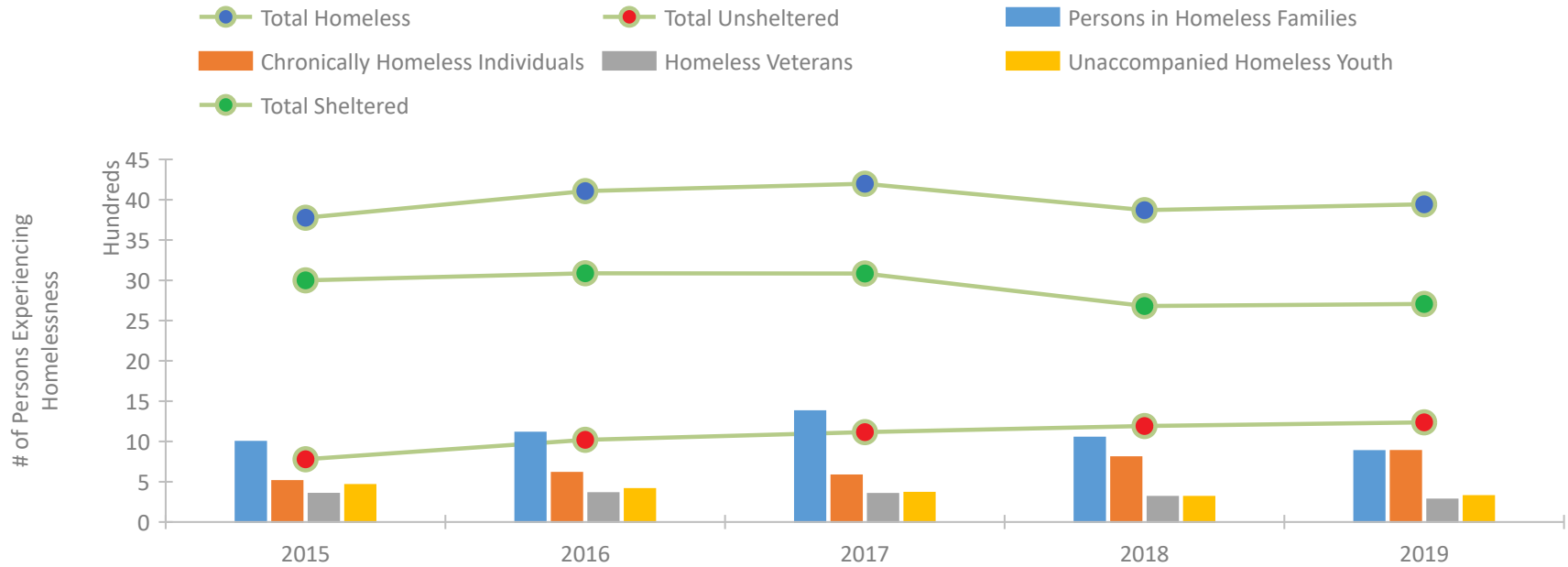


2019 CoC Boundaries 2018 CoC Boundaries

Housing Inventory Count by Program Type

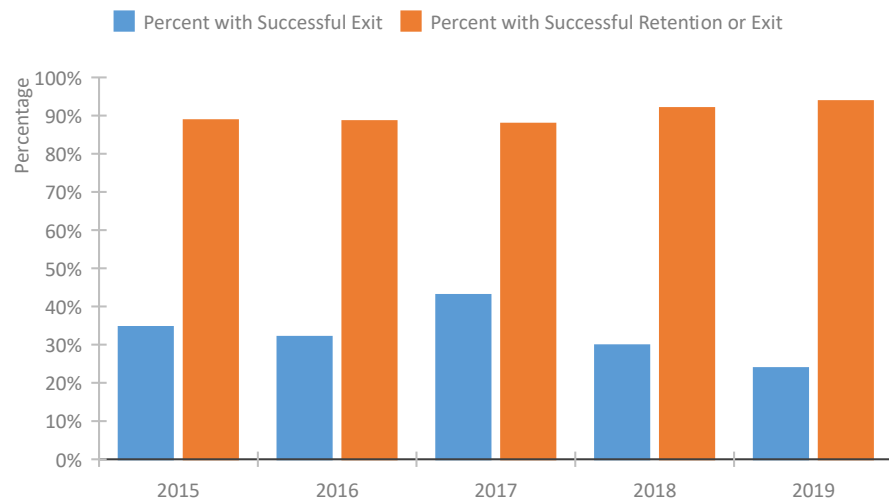


Homeless Population – Point-in-Time (PIT) Count

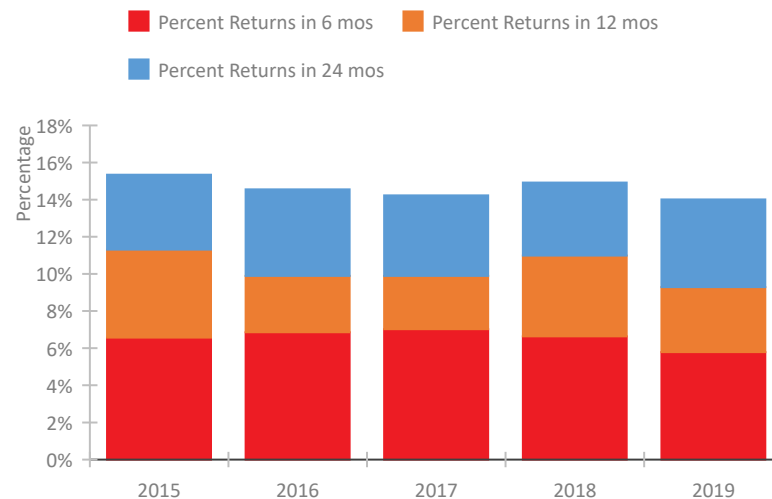


Oklahoma Continuum of Care Performance Profile

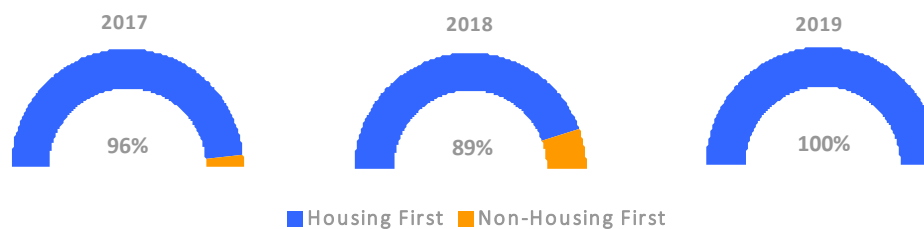
Exits to Permanent Housing by Program Type



Returns to Homelessness Over Time



Proportion of Housing First Projects by Year



Number of Projects by Year

	2017	2018	2019
Housing First Projects	55	56	53
Non-Housing First Projects	2	7	0

Data Summary: Oklahoma

Point-In-Time Count Summary

	2015	2016	2017	2018	2019	2018-19 Change	% Change
Number of Sheltered Persons in Families	888	967	1,092	832	750	-82	-10%
Number of Unsheltered Persons in Families	108	143	283	216	131	-85	-39%
Number of Sheltered Individuals	2,111	2,120	1,992	1,848	1,957	109	6%
Number of Unsheltered Individuals	670	877	832	975	1,106	131	13%
Total Homeless Persons	3,777	4,107	4,199	3,871	3,944	73	2%
Number of Sheltered Families	305	313	369	257	253	-4	-2%
Number of Unsheltered Families	38	47	111	70	47	-23	-33%
Number of Total Families	343	360	480	327	300	-27	-8%
Sheltered Chronically Homeless Individuals	289	329	295	257	302	45	18%
Unsheltered Chronically Homeless Individuals	219	281	283	547	580	33	6%
Total Chronically Homeless Individuals	508	610	578	804	882	78	10%
Sheltered Veterans	253	260	235	206	203	-3	-1%
Unsheltered Veterans	98	98	114	107	77	-30	-28%
Total Veterans	351	358	349	313	280	-33	-11%
Sheltered Unaccompanied Youth (up to 24)	315	266	253	226	234	8	4%
Unsheltered Unaccompanied Youth (up to 24)	145	144	110	87	88	1	1%
Total Unaccompanied Youth (up to 24)	460	410	363	313	322	9	3%

System Performance Measures Summary

	2015	2016	2017	2018	2019	2018-19 Change	% Change
Rate People Return to Homelessness in 6 Months	6.6%	6.9%	7.0%	6.6%	5.8%	-0.9%	N/A
Number of People who are Homeless for the First Time	9,489	10,134	8,804	8,919	6,992	-1,927	-21.6%
Rate People Exit from ES, SH, TH, and RRH to PH	34.6%	32.0%	43.0%	29.8%	23.9%	-5.9%	N/A
Rate People in PSH and OPH Retain or Exit to PH	88.8%	88.6%	87.9%	92.0%	93.8%	1.8%	N/A

Housing Inventory Count Summary

	2015	2016	2017	2018	2019	2018-19 Change	% Change
Emergency Shelter (ES)	2,933	2,914	2,829	2,646	2,600	-46	-2%
Safe Haven (SH)	25	25	25	25	8	-17	-68%
Transitional Housing (TH)	846	823	824	668	613	-55	-8%
Permanent Supportive Housing (PSH)	1,517	1,572	1,679	1,917	1,916	-1	0%
Rapid Re-Housing (RRH)	104	227	345	513	755	242	47%

Award Summary

	2015	2016	2017	2018	2019	2018-19 Change	% Change
Continuum of Care (CoC)	\$8,096,395	\$7,891,816	\$8,123,906	\$8,546,252	\$8,727,820	\$181,568	2%
Emergency Solutions Grants (ESG)	\$2,240,223	\$2,195,352	\$2,486,106	\$2,194,057	\$2,284,897	\$90,840	4%