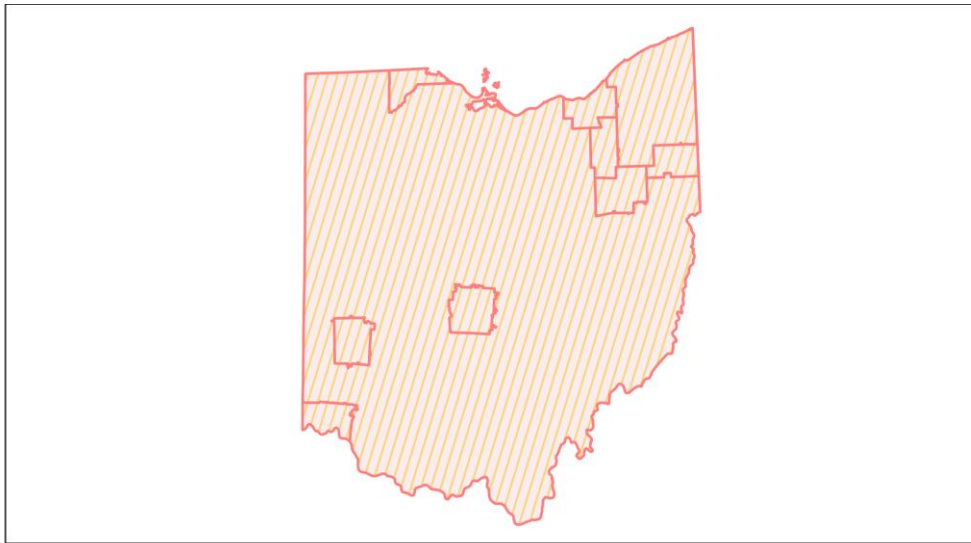
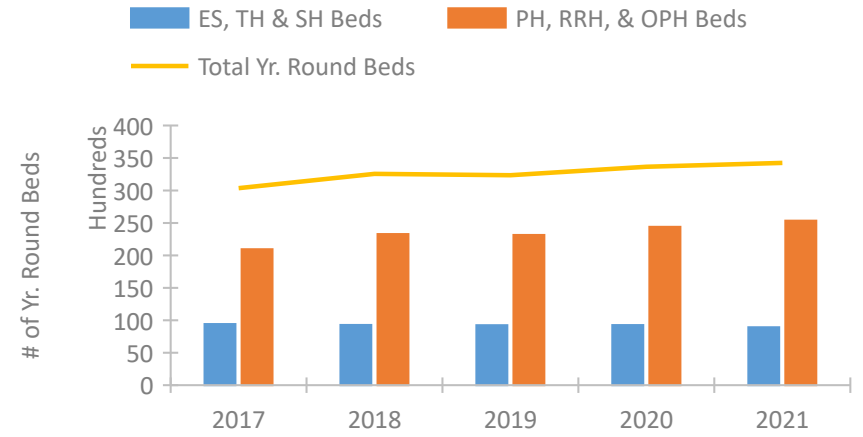


Ohio Continuum of Care Performance Profile

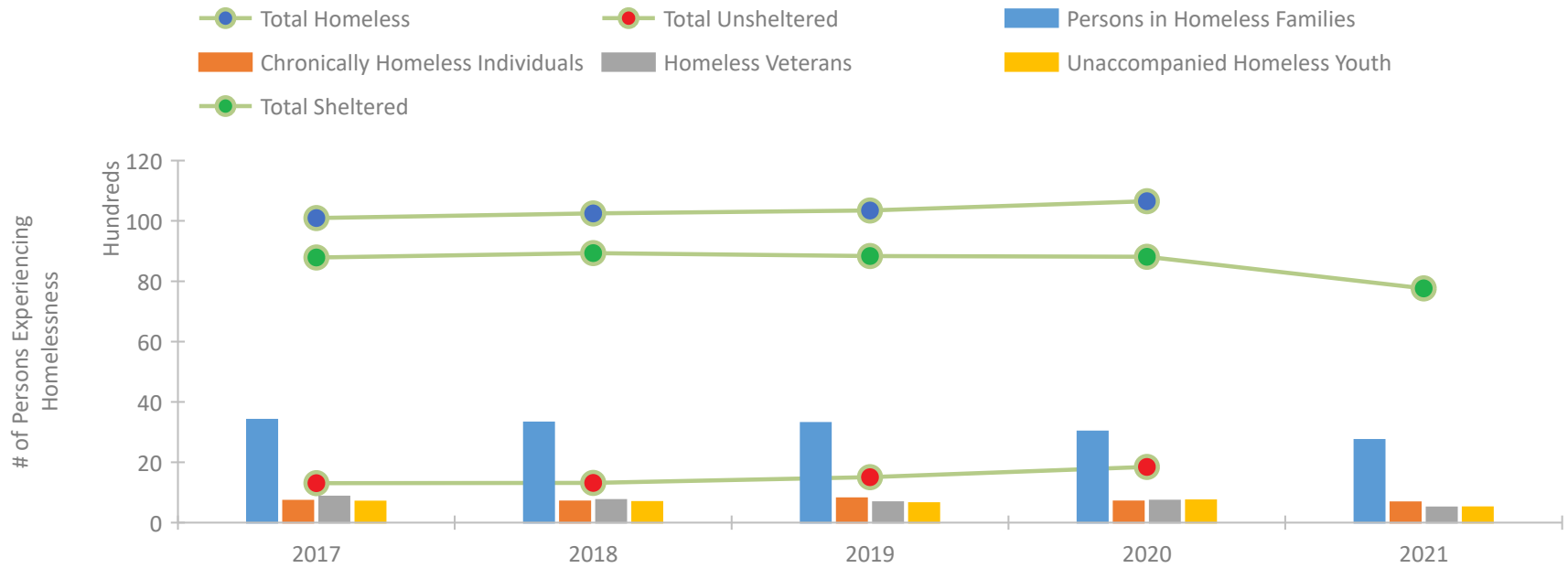


2021 CoC Boundaries 2020 CoC Boundaries

Housing Inventory Count by Program Type



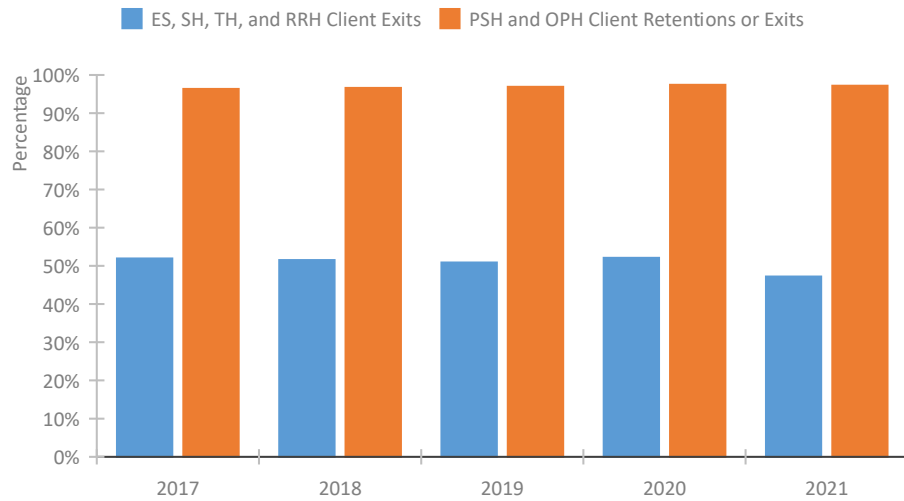
Homeless Population – Point-in-Time (PIT) Count*



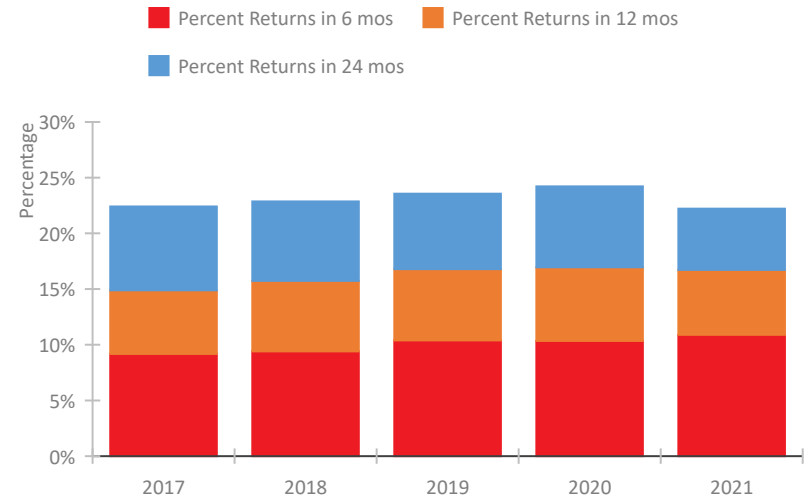
*In 2021, HUD gave communities the option to cancel or modify the unsheltered survey portion of their counts based on the potential risk of COVID-19 transmission associated with conducting an in-person survey. As a result, HUD has excluded the unsheltered population sub-totals and all unsheltered sub-population data for this reporting period. The user is cautioned that the unsheltered and total homeless counts reported here may be missing data.

Ohio Continuum of Care Performance Profile

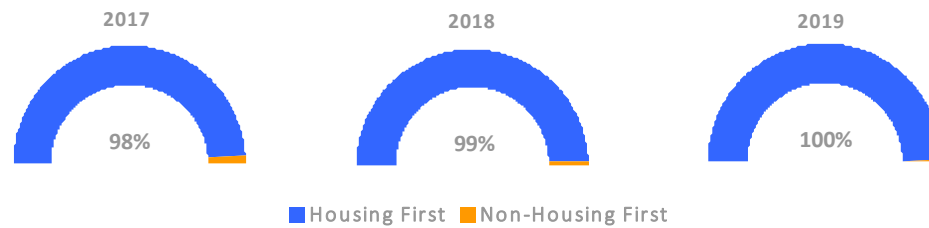
Exits to Permanent Housing by Program Type



Returns to Homelessness Over Time



Proportion of Housing First Projects by Year†



Number of Projects by Year			
	2017	2018	2019
Housing First Projects	303	324	278
Non-Housing First Projects	7	3	1

†2021 Data unavailable at the time of report publication. In 2020 HUD awarded renewal projects noncompetitively, therefore no new data was collected and Housing First data remains the same from 2019 to 2020.

Data Summary: Ohio

Point-In-Time Count Summary*

	2017	2018	2019	2020	2021	2020-21 Change	% Change
Number of Sheltered Persons in Families	3,292	3,201	3,186	2,985	2,742	-243	-8%
Number of Unsheltered Persons in Families	115	119	118	34	0	-34	-100%
Number of Sheltered Individuals	5,494	5,733	5,652	5,826	5,020	-806	-14%
Number of Unsheltered Individuals	1,194	1,196	1,389	1,810	--	--	--
Total Homeless Persons	10,095	10,249	10,345	10,655	7,762	-2,893	-27%
Number of Sheltered Families	991	980	966	896	826	-70	-8%
Number of Unsheltered Families	34	35	33	10	--	--	--
Number of Total Families	1,025	1,015	999	906	826	-80	-9%
Sheltered Chronically Homeless Individuals	396	395	496	433	670	237	55%
Unsheltered Chronically Homeless Individuals	329	305	311	267	--	--	--
Total Chronically Homeless Individuals	725	700	807	700	670	-30	-4%
Sheltered Veterans	785	694	610	698	502	-196	-28%
Unsheltered Veterans	77	55	66	32	--	--	--
Total Veterans	862	749	676	730	502	-228	-31%
Sheltered Unaccompanied Youth (up to 24)	584	593	508	573	506	-67	-12%
Unsheltered Unaccompanied Youth (up to 24)	111	93	135	163	--	--	--
Total Unaccompanied Youth (up to 24)	695	686	643	736	506	-230	-31%

System Performance Measures Summary

	2017	2018	2019	2020	2021	2020-21 Change	% Change
Rate People Return to Homelessness in 6 Months	9.2%	9.4%	10.4%	10.3%	10.9%	0.5%	N/A
Number of People who are Homeless for the First Time	35,862	36,091	34,010	28,191	28,655	464	1.6%
Rate People Exit from ES, SH, TH, and RRH to PH	51.9%	51.5%	50.9%	52.1%	47.2%	-4.9%	N/A
Rate People in PSH and OPH Retain or Exit to PH	96.3%	96.6%	96.9%	97.4%	97.2%	-0.2%	N/A

Housing Inventory Count Summary

	2017	2018	2019	2020	2021	2020-21 Change	% Change
Emergency Shelter (ES)	7,069	7,265	7,431	7,357	6,969	-388	-5%
Safe Haven (SH)	64	99	104	92	87	-5	-5%
Transitional Housing (TH)	2,287	1,905	1,696	1,804	1,865	61	3%
Permanent Supportive Housing (PSH)	16,770	17,895	17,978	18,124	18,542	418	2%
Rapid Re-Housing (RRH)	4,131	5,352	4,957	6,069	6,594	525	9%
Other Permanent Housing (OPH)	30	46	196	209	201	-8	-4%

Award Summary

	2017	2018	2019	2020	2021	2020-21 Change	% Change
Continuum of Care (CoC)	\$95,840,276	\$104,524,400	\$112,603,683	\$121,855,227	\$126,663,985	\$4,808,758	4%
Emergency Solutions Grants (ESG)	\$12,939,257	\$12,309,135	\$12,749,335	\$13,228,932	\$13,182,330	(\$46,602)	0%
Youth Homelessness Demonstration Program (YHDP)	\$6,073,948	\$1,473,162	--	\$1,765,797	\$3,977,869	\$2,212,072	125%

*In 2021, HUD gave communities the option to cancel or modify the unsheltered survey portion of their counts based on the potential risk of COVID-19 transmission associated with conducting an in-person survey. As a result, HUD has excluded the unsheltered population sub-totals and all unsheltered sub-population data for this reporting period. The user is cautioned that the unsheltered and total homeless counts reported here may be missing data.