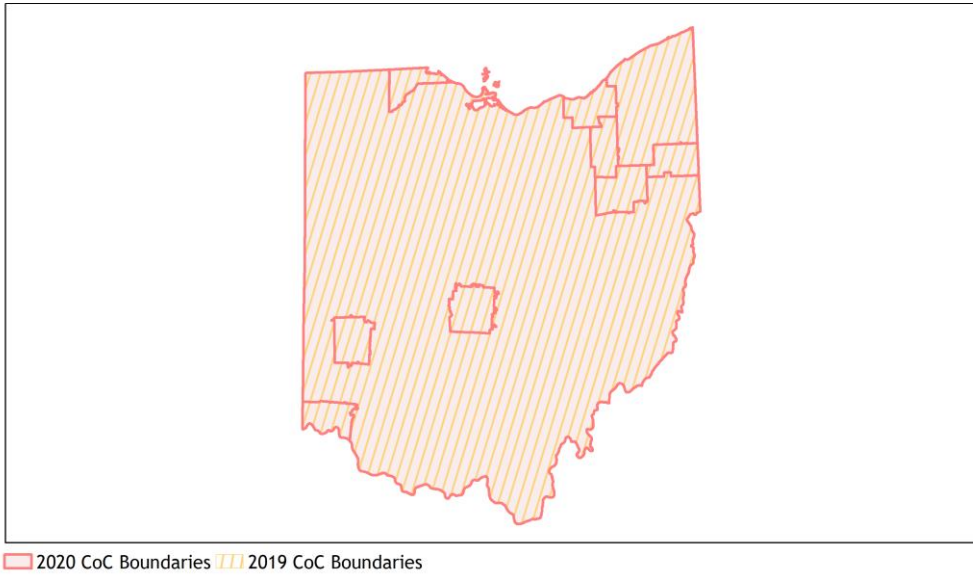
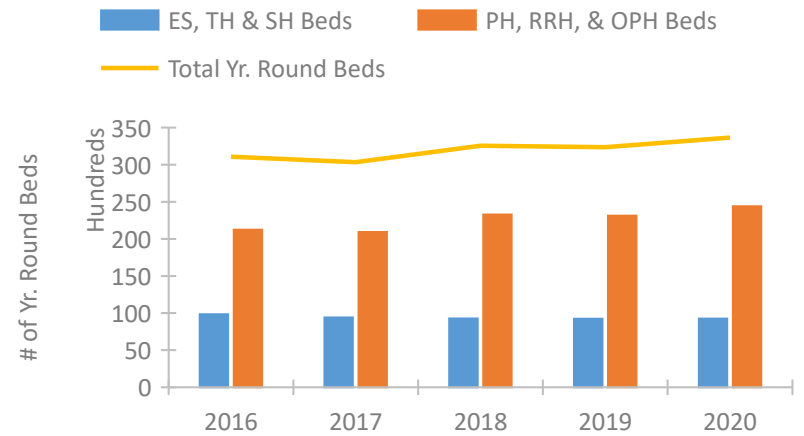


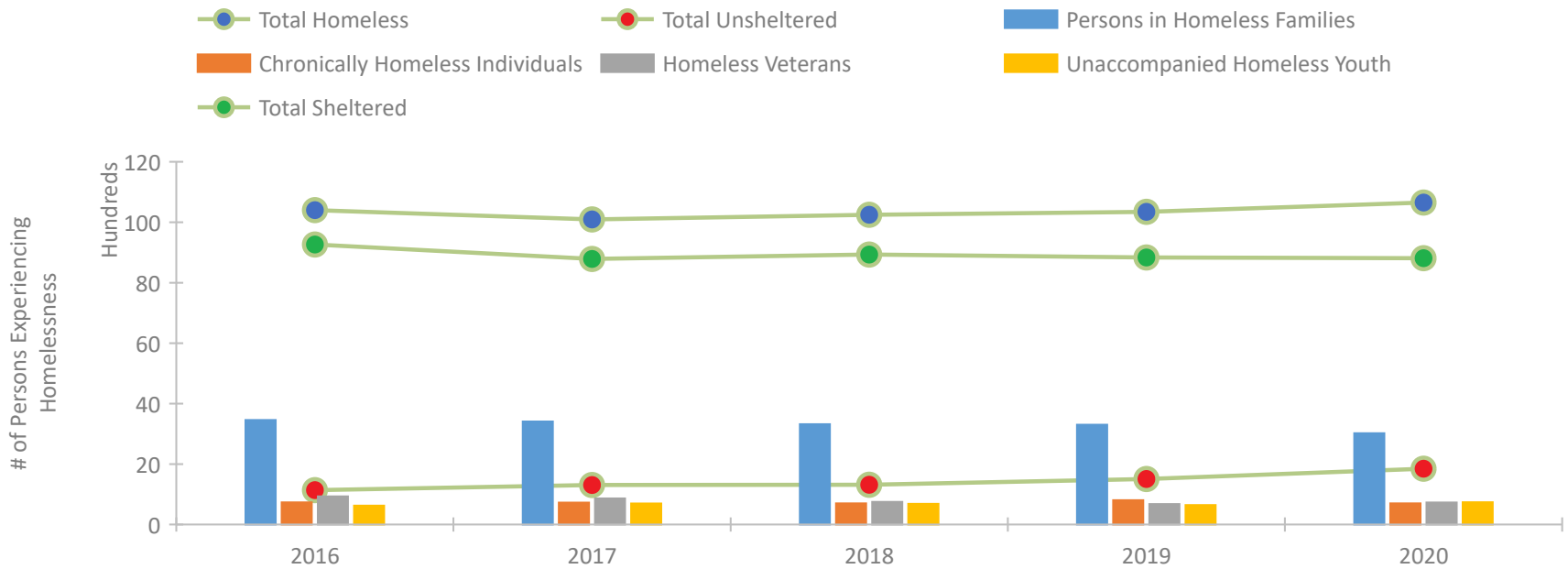
## Ohio Continuum of Care Performance Profile



### Housing Inventory Count by Program Type

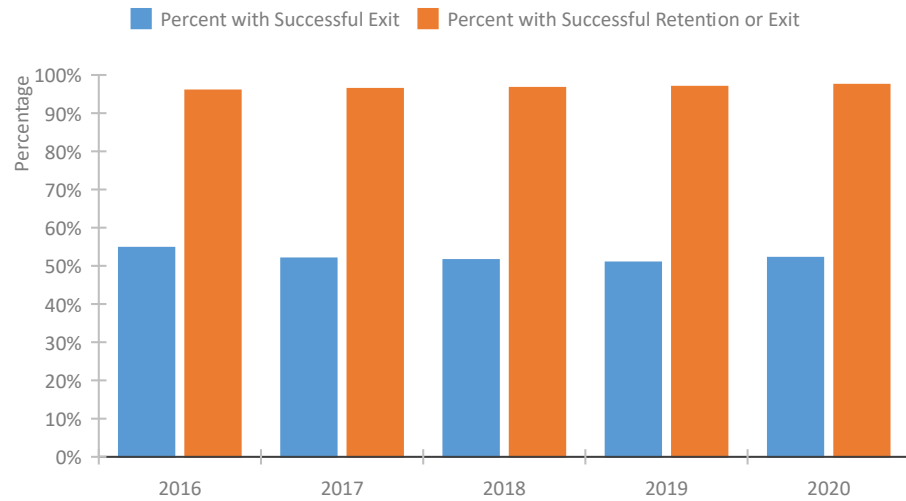


### Homeless Population – Point-in-Time (PIT) Count

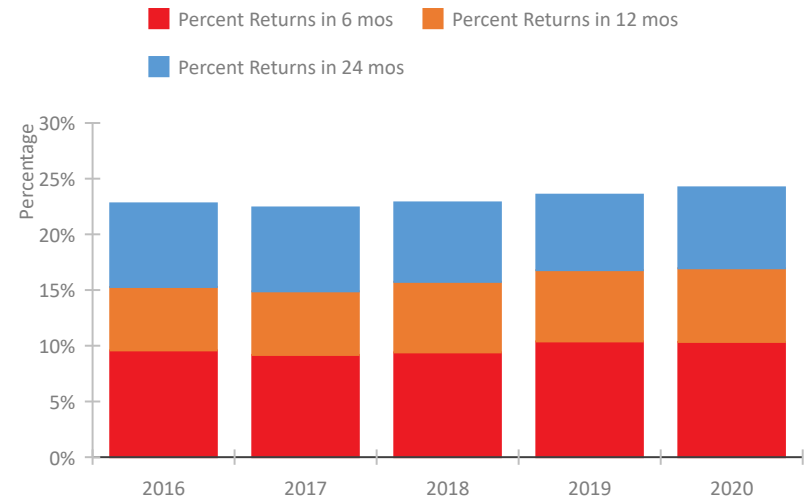


## Ohio Continuum of Care Performance Profile

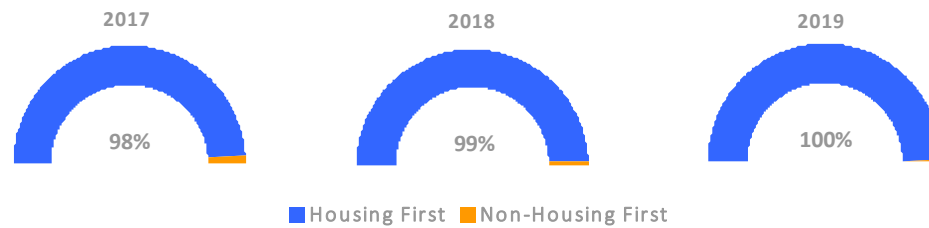
### Exits to Permanent Housing by Program Type



### Returns to Homelessness Over Time



### Proportion of Housing First Projects by Year\*



Number of Projects by Year			
	2017	2018	2019
Housing First Projects	303	324	278
Non-Housing First Projects	7	3	1

\*In 2020 HUD awarded renewal projects noncompetitively, therefore no new data was collected and Housing First data remains the same from 2019 to 2020.

## Data Summary: Ohio

### Point-In-Time Count Summary

	2016	2017	2018	2019	2020	2019-20 Change	% Change
Number of Sheltered Persons in Families	3,376	3,292	3,201	3,186	2,985	-201	-6%
Number of Unsheltered Persons in Families	82	115	119	118	34	-84	-71%
Number of Sheltered Individuals	5,890	5,494	5,733	5,652	5,826	174	3%
Number of Unsheltered Individuals	1,056	1,194	1,196	1,389	1,810	421	30%
<b>Total Homeless Persons</b>	<b>10,404</b>	<b>10,095</b>	<b>10,249</b>	<b>10,345</b>	<b>10,655</b>	<b>310</b>	<b>3%</b>
Number of Sheltered Families	1,061	991	980	966	896	-70	-7%
Number of Unsheltered Families	18	34	35	33	10	-23	-70%
<b>Number of Total Families</b>	<b>1,079</b>	<b>1,025</b>	<b>1,015</b>	<b>999</b>	<b>906</b>	<b>-93</b>	<b>-9%</b>
Sheltered Chronically Homeless Individuals	403	396	395	496	433	-63	-13%
Unsheltered Chronically Homeless Individuals	330	329	305	311	267	-44	-14%
<b>Total Chronically Homeless Individuals</b>	<b>733</b>	<b>725</b>	<b>700</b>	<b>807</b>	<b>700</b>	<b>-107</b>	<b>-13%</b>
Sheltered Veterans	845	785	694	610	698	88	14%
Unsheltered Veterans	85	77	55	66	32	-34	-52%
<b>Total Veterans</b>	<b>930</b>	<b>862</b>	<b>749</b>	<b>676</b>	<b>730</b>	<b>54</b>	<b>8%</b>
Sheltered Unaccompanied Youth (up to 24)	557	584	593	508	573	65	13%
Unsheltered Unaccompanied Youth (up to 24)	65	111	93	135	163	28	21%
<b>Total Unaccompanied Youth (up to 24)</b>	<b>622</b>	<b>695</b>	<b>686</b>	<b>643</b>	<b>736</b>	<b>93</b>	<b>14%</b>

### System Performance Measures Summary

	2016	2017	2018	2019	2020	2019-20 Change	% Change
Rate People Return to Homelessness in 6 Months	9.6%	9.2%	9.4%	10.4%	10.3%	-0%	N/A
Number of People who are Homeless for the First Time	37,250	35,862	36,091	34,010	28,191	-5,819	-17.1%
Rate People Exit from ES, SH, TH, and RRH to PH	54.7%	51.9%	51.5%	50.9%	52.1%	1.2%	N/A
Rate People in PSH and OPH Retain or Exit to PH	95.9%	96.3%	96.6%	96.9%	97.4%	0.5%	N/A

### Housing Inventory Count Summary

	2016	2017	2018	2019	2020	2019-20 Change	% Change
Emergency Shelter (ES)	6,628	7,069	7,265	7,431	7,357	-74	-1%
Safe Haven (SH)	92	64	99	104	92	-12	-12%
Transitional Housing (TH)	3,124	2,287	1,905	1,696	1,804	108	6%
Permanent Supportive Housing (PSH)	16,751	16,770	17,895	17,978	18,124	146	1%
Rapid Re-Housing (RRH)	3,980	4,131	5,352	4,957	6,069	1,112	22%
Other Permanent Housing (OPH)	22	30	46	196	209	13	7%

### Award Summary

	2016	2017	2018	2019	2020	2019-20 Change	% Change
<b>Continuum of Care (CoC)</b>	\$94,869,563	\$95,840,276	\$104,524,400	\$112,603,683	\$121,855,227	\$9,251,544	8%
<b>Emergency Solutions Grants (ESG)</b>	\$12,349,619	\$12,939,257	\$12,309,135	\$12,749,335	\$13,228,932	\$479,597	4%
<b>Youth Homelessness Demonstration Program (YHDP)</b>	\$5,967,388	\$6,073,948	\$1,473,162	--	\$1,765,797	--	--