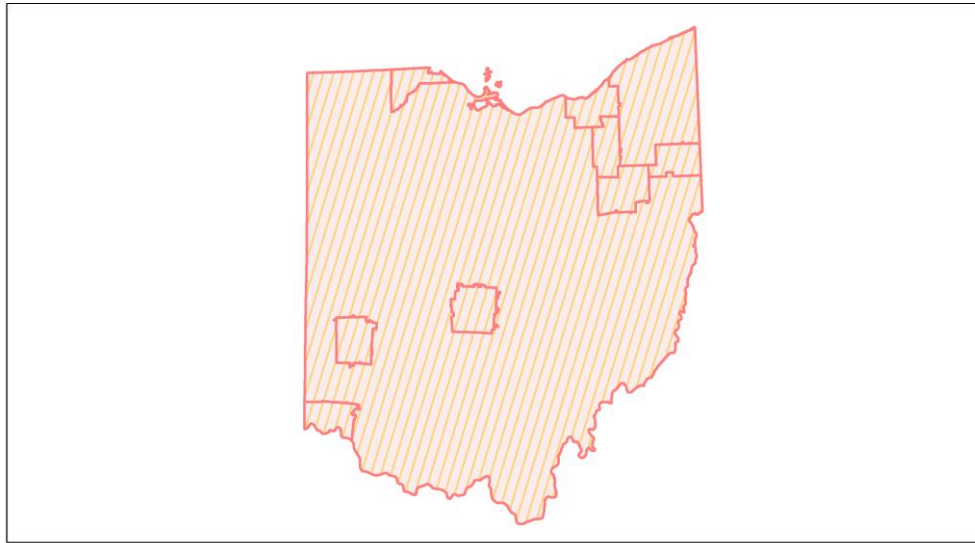
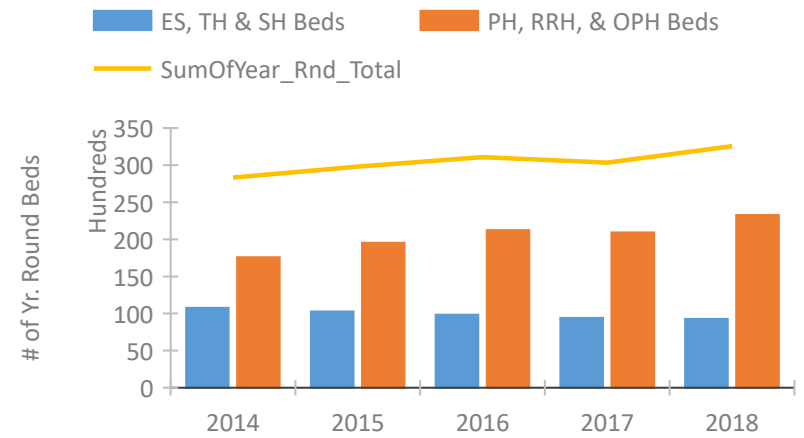


Ohio Continuum of Care Performance Profile

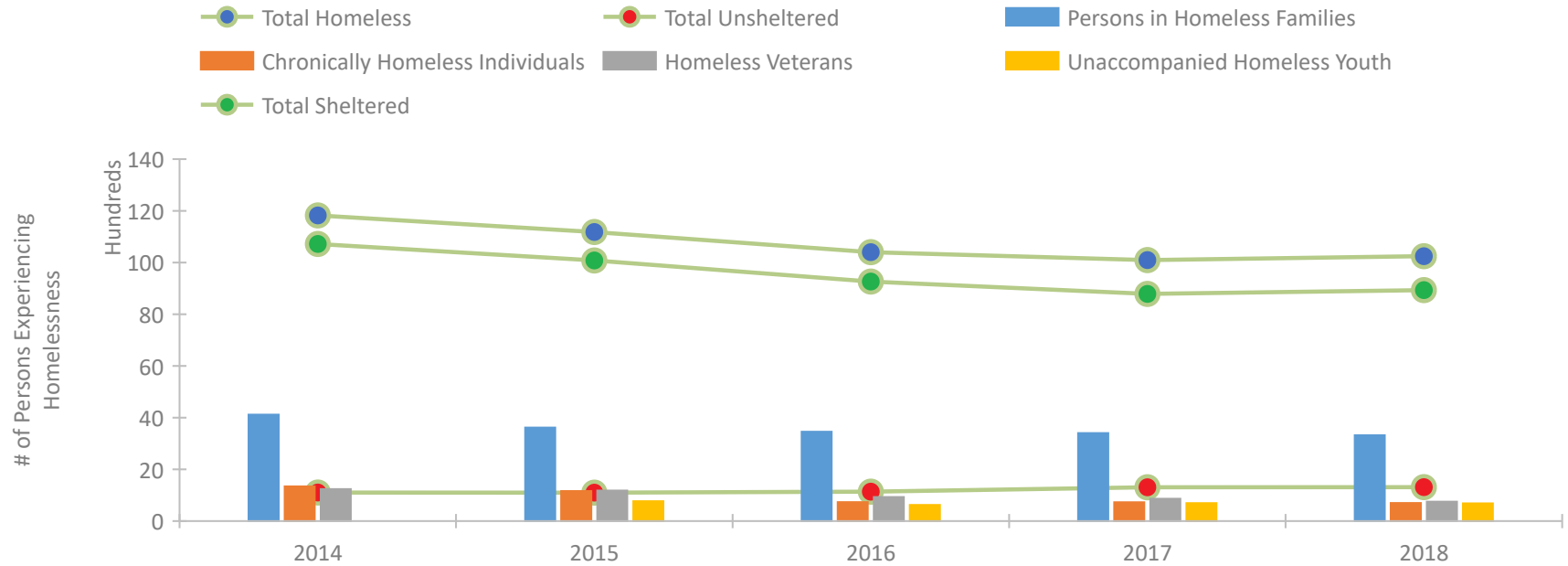


2018 CoC Boundaries 2017 CoC Boundaries

Housing Inventory Count by Program Type

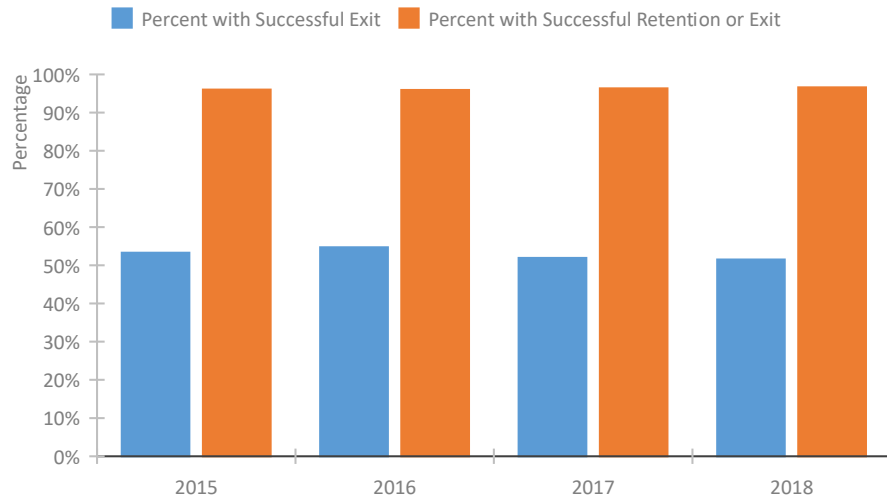


Homeless Population – Point-in-Time (PIT) Count

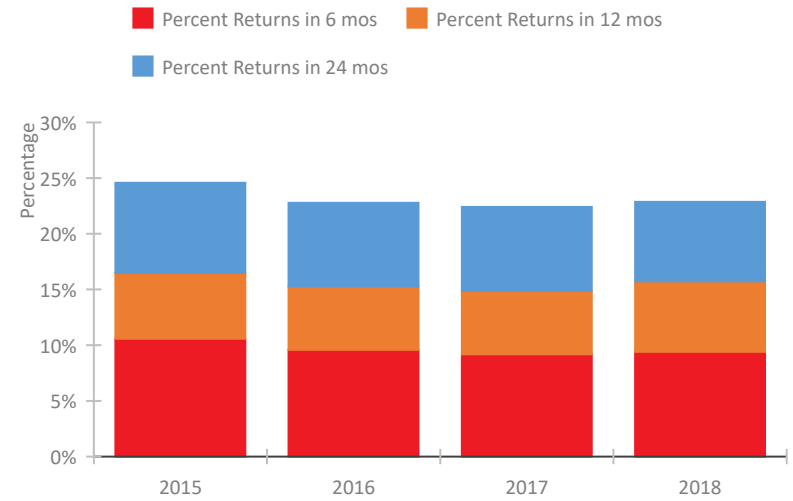


Ohio Continuum of Care Performance Profile

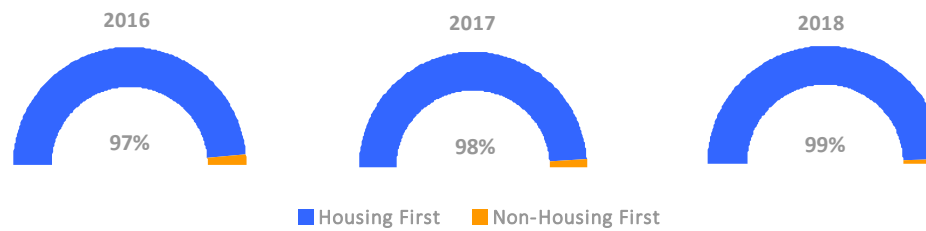
Exits to Permanent Housing by Program Type



Returns to Homelessness Over Time



Proportion of Housing First Projects by Year



Number of Projects by Year

	2016	2017	2018
Housing First Projects	294	303	324
Non-Housing First Projects	8	7	3

Data Summary: Ohio

Point-In-Time Count Summary

	2014	2015	2016	2017	2018	2017-18 Change	% Change
Number of Sheltered Persons in Families	3,951	3,493	3,376	3,292	3,201	-91	-3%
Number of Unsheltered Persons in Families	168	124	82	115	119	4	3%
Number of Sheltered Individuals	6,732	6,542	5,840	5,429	5,682	253	5%
Number of Unsheltered Individuals	934	973	1,054	1,193	1,196	3	0%
Total Homeless Persons	11,785	11,132	10,352	10,029	10,198	169	2%
Number of Sheltered Families	1,261	1,073	1,061	991	980	-11	-1%
Number of Unsheltered Families	53	35	18	34	35	1	3%
Number of Total Families	1,314	1,108	1,079	1,025	1,015	-10	-1%
Sheltered Chronically Homeless Individuals	894	782	403	396	395	-1	0%
Unsheltered Chronically Homeless Individuals	446	378	330	329	305	-24	-7%
Total Chronically Homeless Individuals	1,340	1,160	733	725	700	-25	-3%
Sheltered Veterans	1,102	1,073	845	785	694	-91	-12%
Unsheltered Veterans	134	110	85	77	55	-22	-29%
Total Veterans	1,236	1,183	930	862	749	-113	-13%
Sheltered Unaccompanied Youth (up to 24)	--	665	557	584	593	9	2%
Unsheltered Unaccompanied Youth (up to 24)	--	105	65	111	93	-18	-16%
Total Unaccompanied Youth (up to 24)	--	770	622	695	686	-9	-1%

System Performance Measures Summary

	2014	2015	2016	2017	2018	2017-18 Change	% Change
Rate People Return to Homelessness in 6 Months	N/A	10.6%	9.6%	9.2%	9.4%	0.2%	N/A
Number of People who are Homeless for the First Time	N/A	36,350	37,250	35,862	36,091	229	0.6%
Rate People Exit from ES, SH, TH, and RRH to PH	N/A	53.3%	54.7%	51.9%	51.5%	-0.4%	N/A
Rate People in PSH and OPH Retain or Exit to PH	N/A	96.0%	95.9%	96.3%	96.6%	0.3%	N/A

Housing Inventory Count Summary

	2014	2015	2016	2017	2018	2017-18 Change	% Change
Emergency Shelter (ES)	6,660	6,676	6,628	7,069	7,265	196	3%
Safe Haven (SH)	73	91	92	64	99	35	55%
Transitional Housing (TH)	4,026	3,506	3,124	2,287	1,905	-382	-17%
Permanent Supportive Housing (PSH)	14,211	15,824	16,751	16,770	17,895	1,125	7%
Rapid Re-Housing (RRH)	2,770	3,453	3,980	4,131	5,352	1,221	30%
Other Permanent Housing (OPH)	--	--	22	30	46	16	53%

Award Summary

	2014	2015	2016	2017	2018	2017-18 Change	% Change
Continuum of Care (CoC)	\$88,155,421	\$96,271,896	\$94,869,563	\$95,840,276	\$104,524,400	\$8,684,124	9%
Emergency Solutions Grants (ESG)	\$11,446,689	\$12,375,411	\$12,349,619	\$12,939,257	\$12,309,135	(\$630,122)	-5%
Youth Homelessness Demonstration Program (YHDP)	N/A	N/A	\$5,967,388	\$6,073,948	\$1,473,162	(\$4,600,786)	-76%