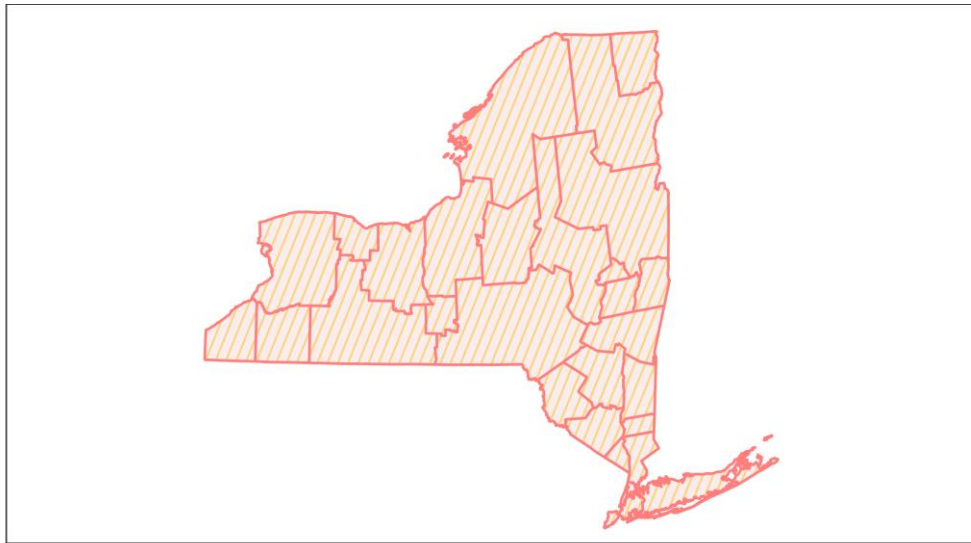
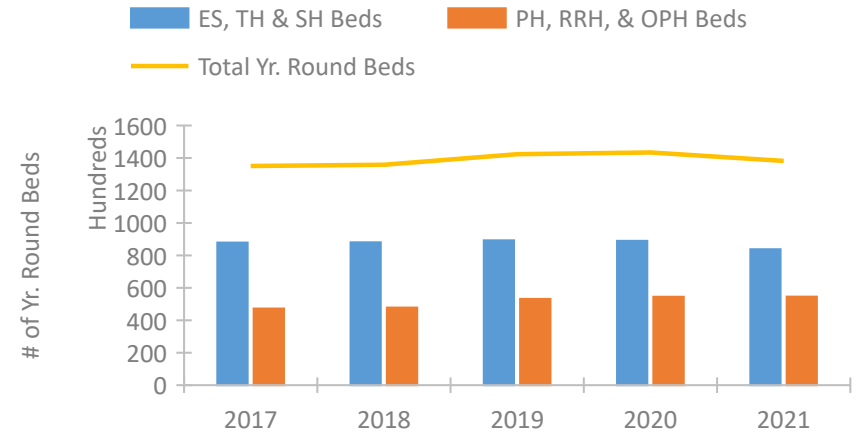


New York Continuum of Care Performance Profile

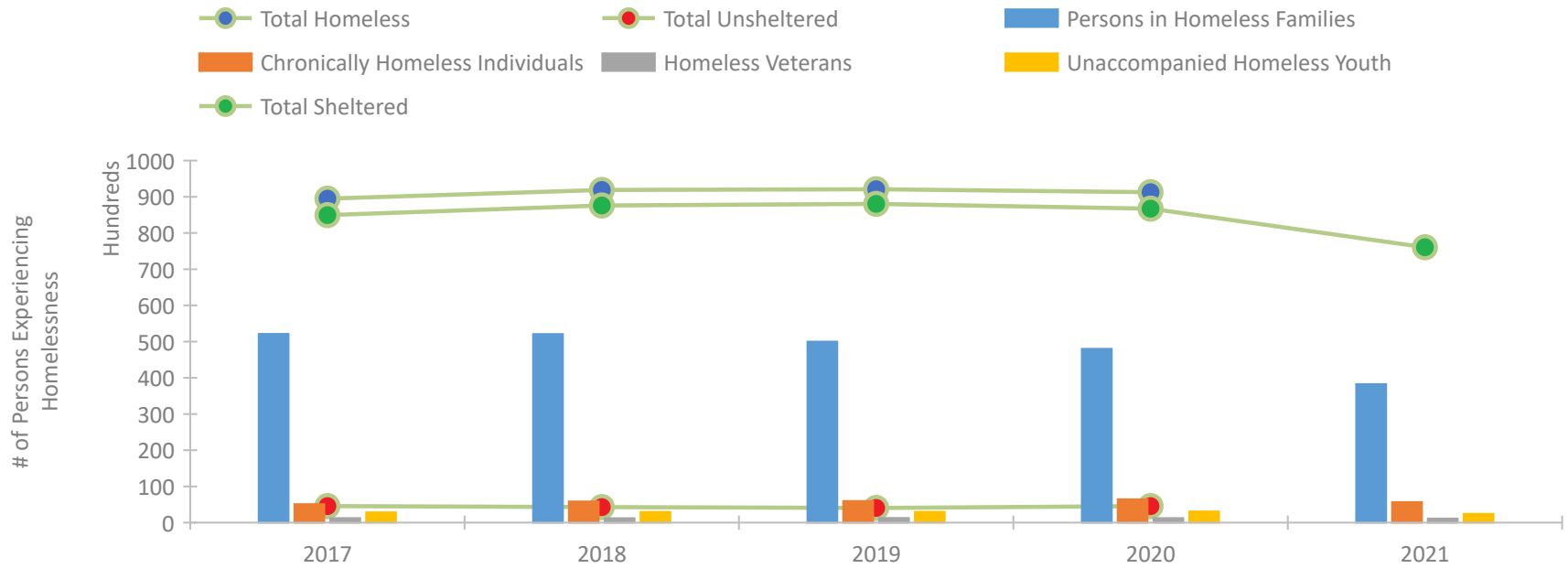


2021 CoC Boundaries 2020 CoC Boundaries

Housing Inventory Count by Program Type



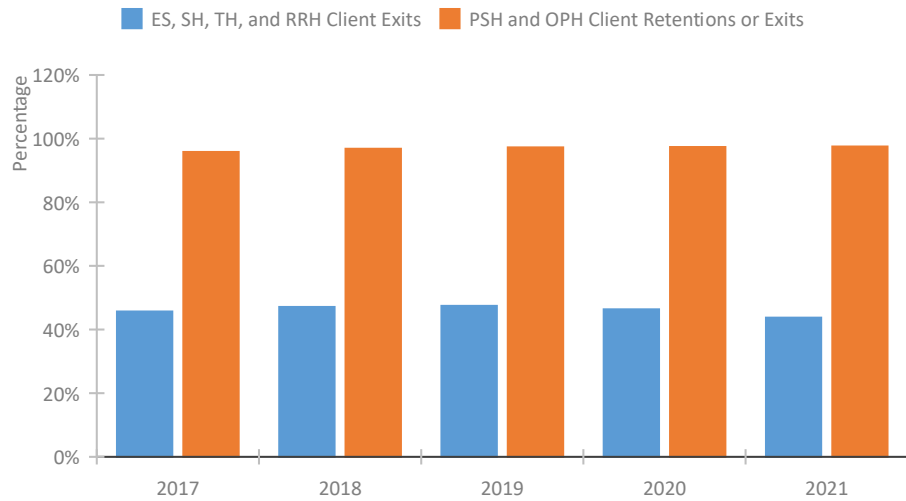
Homeless Population – Point-in-Time (PIT) Count*



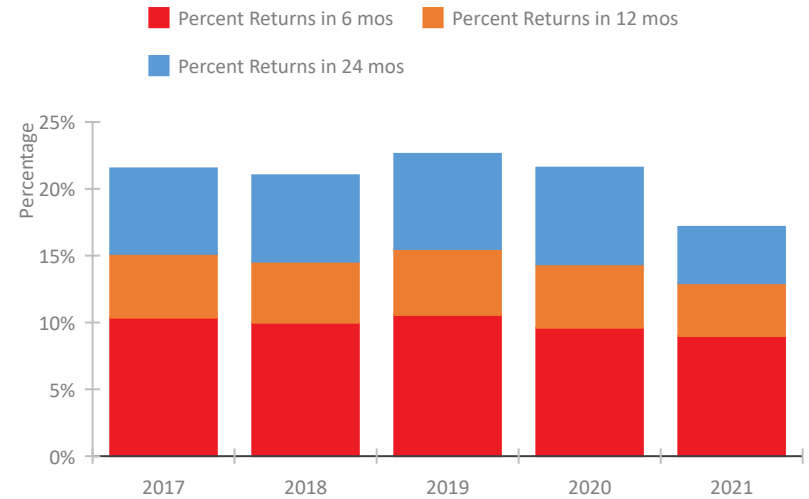
*In 2021, HUD gave communities the option to cancel or modify the unsheltered survey portion of their counts based on the potential risk of COVID-19 transmission associated with conducting an in-person survey. As a result, HUD has excluded the unsheltered population sub-totals and all unsheltered sub-population data for this reporting period. The user is cautioned that the unsheltered and total homeless counts reported here may be missing data.

New York Continuum of Care Performance Profile

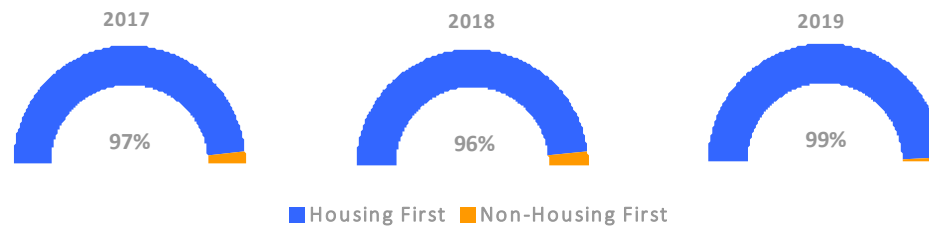
Exits to Permanent Housing by Program Type



Returns to Homelessness Over Time



Proportion of Housing First Projects by Year†



Number of Projects by Year

	2017	2018	2019
Housing First Projects	619	543	560
Non-Housing First Projects	22	21	7

†2021 Data unavailable at the time of report publication. In 2020 HUD awarded renewal projects noncompetitively, therefore no new data was collected and Housing First data remains the same from 2019 to 2020.

Data Summary: New York

Point-In-Time Count Summary*

	2017	2018	2019	2020	2021	2020-21 Change	% Change
Number of Sheltered Persons in Families	52,058	52,041	49,970	47,982	38,258	-9,724	-20%
Number of Unsheltered Persons in Families	55	29	8	6	0	-6	-100%
Number of Sheltered Individuals	32,890	35,562	38,074	38,732	37,793	-939	-2%
Number of Unsheltered Individuals	4,500	4,265	4,039	4,551	--	--	--
Total Homeless Persons	89,503	91,897	92,091	91,271	76,051	-15,220	-17%
Number of Sheltered Families	16,281	16,356	15,899	15,149	12,297	-2,852	-19%
Number of Unsheltered Families	16	12	2	2	--	--	--
Number of Total Families	16,297	16,368	15,901	15,151	12,297	-2,854	-19%
Sheltered Chronically Homeless Individuals	3,110	4,206	4,367	4,832	5,662	830	17%
Unsheltered Chronically Homeless Individuals	1,977	1,623	1,598	1,595	--	--	--
Total Chronically Homeless Individuals	5,087	5,829	5,965	6,427	5,662	-765	-12%
Sheltered Veterans	1,186	1,184	1,247	1,214	1,097	-117	-10%
Unsheltered Veterans	58	40	23	37	--	--	--
Total Veterans	1,244	1,224	1,270	1,251	1,097	-154	-12%
Sheltered Unaccompanied Youth (up to 24)	2,535	2,680	2,785	2,769	2,421	-348	-13%
Unsheltered Unaccompanied Youth (up to 24)	294	261	193	303	--	--	--
Total Unaccompanied Youth (up to 24)	2,829	2,941	2,978	3,072	2,421	-651	-21%

System Performance Measures Summary

	2017	2018	2019	2020	2021	2020-21 Change	% Change
Rate People Return to Homelessness in 6 Months	10.4%	10.0%	10.6%	9.6%	9.0%	-0.6%	N/A
Number of People who are Homeless for the First Time	96,318	98,441	96,141	74,648	65,125	-9,523	-12.8%
Rate People Exit from ES, SH, TH, and RRH to PH	45.7%	47.1%	47.4%	46.3%	43.7%	-2.6%	N/A
Rate People in PSH and OPH Retain or Exit to PH	95.8%	96.8%	97.2%	97.3%	97.5%	0.2%	N/A

Housing Inventory Count Summary

	2017	2018	2019	2020	2021	2020-21 Change	% Change
Emergency Shelter (ES)	81,468	82,292	83,571	82,974	78,086	-4,888	-6%
Safe Haven (SH)	92	95	105	82	70	-12	-15%
Transitional Housing (TH)	6,276	5,676	5,562	5,899	5,564	-335	-6%
Permanent Supportive Housing (PSH)	41,577	42,183	44,905	46,836	47,309	473	1%
Rapid Re-Housing (RRH)	5,172	4,954	5,012	4,508	4,355	-153	-3%
Other Permanent Housing (OPH)	517	668	3,209	3,096	2,858	-238	-8%

Award Summary

	2017	2018	2019	2020	2021	2020-21 Change	% Change
Continuum of Care (CoC)	\$200,807,611	\$214,906,456	\$224,763,712	\$245,971,792	\$261,100,663	\$15,128,871	6%
Emergency Solutions Grants (ESG)	\$28,561,779	\$25,708,887	\$26,743,321	\$27,759,628	\$27,948,643	\$189,015	1%
Youth Homelessness Demonstration Program (YHDP)	--	\$3,592,570	\$1,996,523	\$16,373,335	--	--	--

*In 2021, HUD gave communities the option to cancel or modify the unsheltered survey portion of their counts based on the potential risk of COVID-19 transmission associated with conducting an in-person survey. As a result, HUD has excluded the unsheltered population sub-totals and all unsheltered sub-population data for this reporting period. The user is cautioned that the unsheltered and total homeless counts reported here may be missing data.