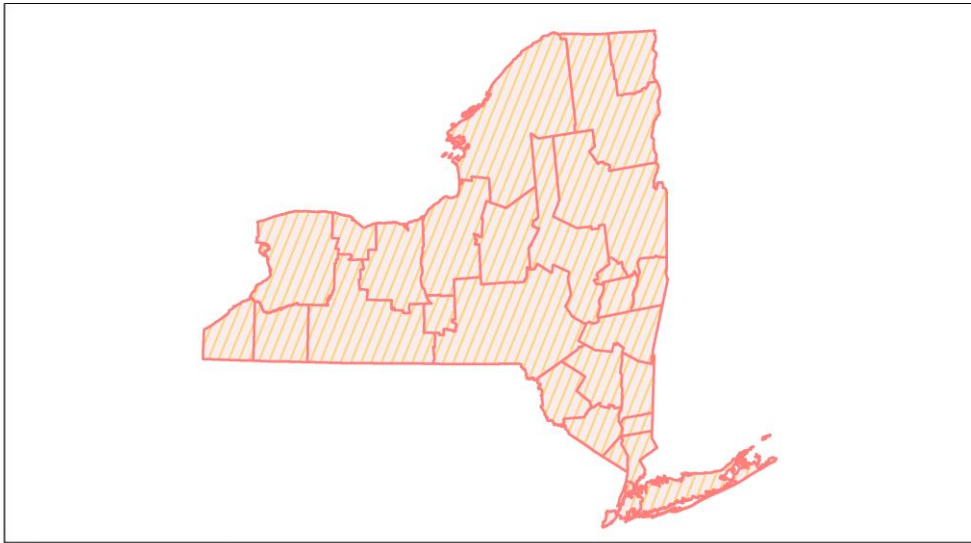
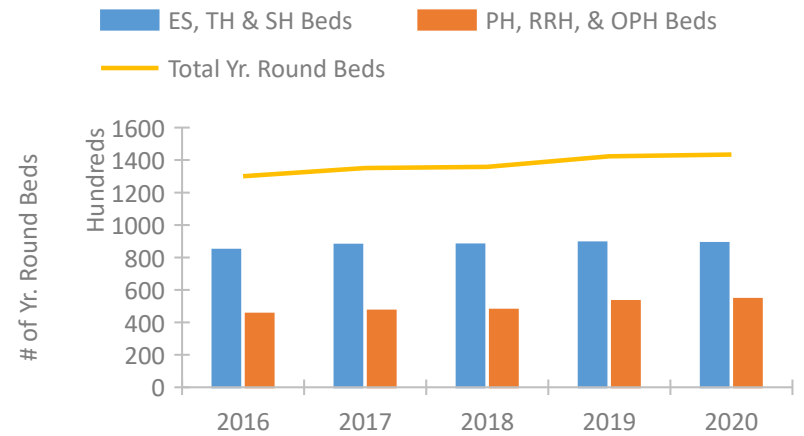


New York Continuum of Care Performance Profile

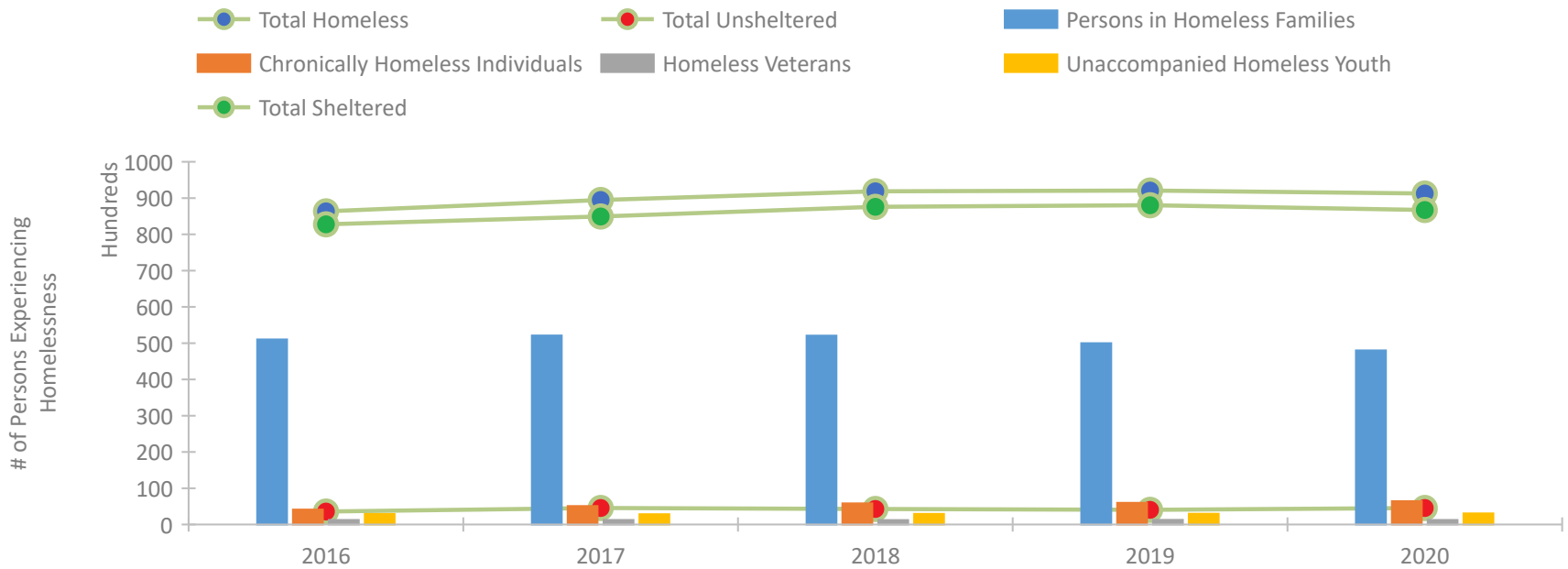


2020 CoC Boundaries 2019 CoC Boundaries

Housing Inventory Count by Program Type



Homeless Population – Point-in-Time (PIT) Count

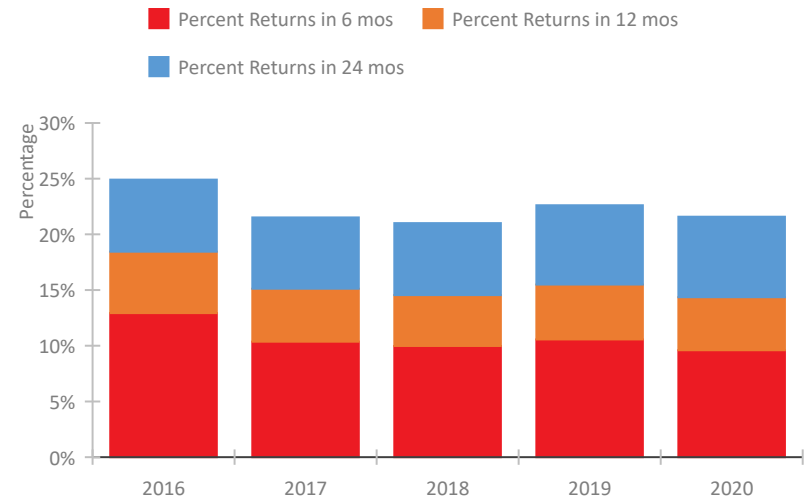


New York Continuum of Care Performance Profile

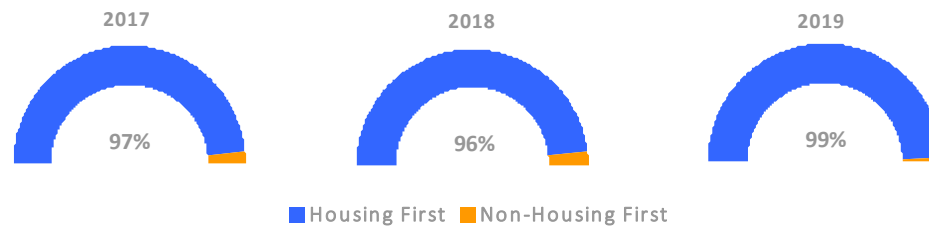
Exits to Permanent Housing by Program Type



Returns to Homelessness Over Time



Proportion of Housing First Projects by Year*



Number of Projects by Year			
	2017	2018	2019
Housing First Projects	619	543	560
Non-Housing First Projects	22	21	7

*In 2020 HUD awarded renewal projects noncompetitively, therefore no new data was collected and Housing First data remains the same from 2019 to 2020.

Data Summary: New York

Point-In-Time Count Summary

	2016	2017	2018	2019	2020	2019-20 Change	% Change
Number of Sheltered Persons in Families	50,968	52,058	52,041	49,970	47,982	-1,988	-4%
Number of Unsheltered Persons in Families	69	55	29	8	6	-2	-25%
Number of Sheltered Individuals	31,793	32,890	35,562	38,074	38,732	658	2%
Number of Unsheltered Individuals	3,522	4,500	4,265	4,039	4,551	512	13%
Total Homeless Persons	86,352	89,503	91,897	92,091	91,271	-820	-1%
Number of Sheltered Families	15,474	16,281	16,356	15,899	15,149	-750	-5%
Number of Unsheltered Families	25	16	12	2	2	0	-0%
Number of Total Families	15,499	16,297	16,368	15,901	15,151	-750	-5%
Sheltered Chronically Homeless Individuals	2,063	3,110	4,206	4,367	4,832	465	11%
Unsheltered Chronically Homeless Individuals	2,049	1,977	1,623	1,598	1,595	-3	-0%
Total Chronically Homeless Individuals	4,112	5,087	5,829	5,965	6,427	462	8%
Sheltered Veterans	1,156	1,186	1,184	1,247	1,214	-33	-3%
Unsheltered Veterans	92	58	40	23	37	14	61%
Total Veterans	1,248	1,244	1,224	1,270	1,251	-19	-1%
Sheltered Unaccompanied Youth (up to 24)	2,641	2,535	2,680	2,785	2,769	-16	-1%
Unsheltered Unaccompanied Youth (up to 24)	248	294	261	193	303	110	57%
Total Unaccompanied Youth (up to 24)	2,889	2,829	2,941	2,978	3,072	94	3%

System Performance Measures Summary

	2016	2017	2018	2019	2020	2019-20 Change	% Change
Rate People Return to Homelessness in 6 Months	12.9%	10.4%	10.0%	10.6%	9.6%	-1%	N/A
Number of People who are Homeless for the First Time	94,683	96,318	98,441	96,141	74,648	-21,493	-22.4%
Rate People Exit from ES, SH, TH, and RRH to PH	47.2%	45.7%	47.1%	47.4%	46.3%	-1.1%	N/A
Rate People in PSH and OPH Retain or Exit to PH	94.7%	95.8%	96.8%	97.2%	97.3%	0.1%	N/A

Housing Inventory Count Summary

	2016	2017	2018	2019	2020	2019-20 Change	% Change
Emergency Shelter (ES)	76,479	81,468	82,292	83,571	82,974	-597	-1%
Safe Haven (SH)	199	92	95	105	82	-23	-22%
Transitional Housing (TH)	8,052	6,276	5,676	5,562	5,899	337	6%
Permanent Supportive Housing (PSH)	42,167	41,577	42,183	44,905	46,836	1,931	4%
Rapid Re-Housing (RRH)	2,493	5,172	4,954	5,012	4,508	-504	-10%
Other Permanent Housing (OPH)	659	517	668	3,209	3,096	-113	-4%

Award Summary

	2016	2017	2018	2019	2020	2019-20 Change	% Change
Continuum of Care (CoC)	\$195,920,284	\$200,807,611	\$214,906,456	\$224,763,712	\$245,971,792	\$21,208,080	9%
Emergency Solutions Grants (ESG)	\$25,805,671	\$28,561,779	\$25,708,887	\$26,743,321	\$27,759,628	\$1,016,307	4%
Youth Homelessness Demonstration Program (YHDP)	--	--	\$3,592,570	\$1,996,523	\$16,373,335	\$14,376,812	720%