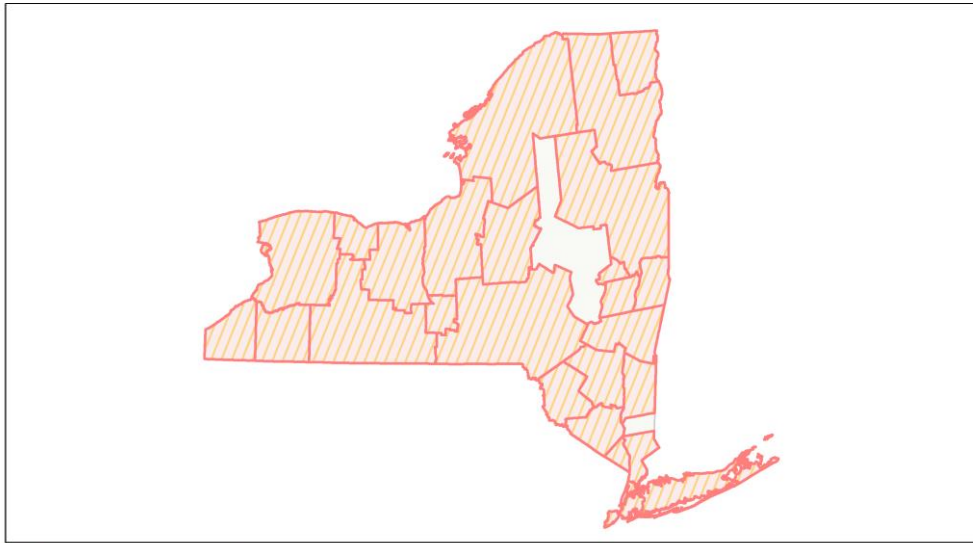
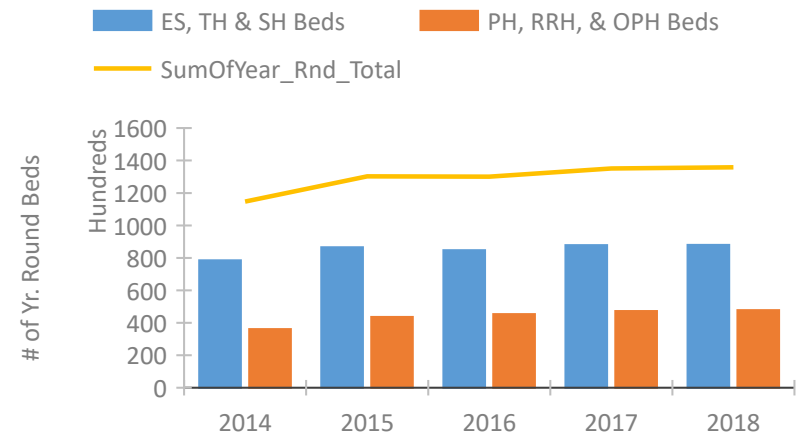


New York Continuum of Care Performance Profile

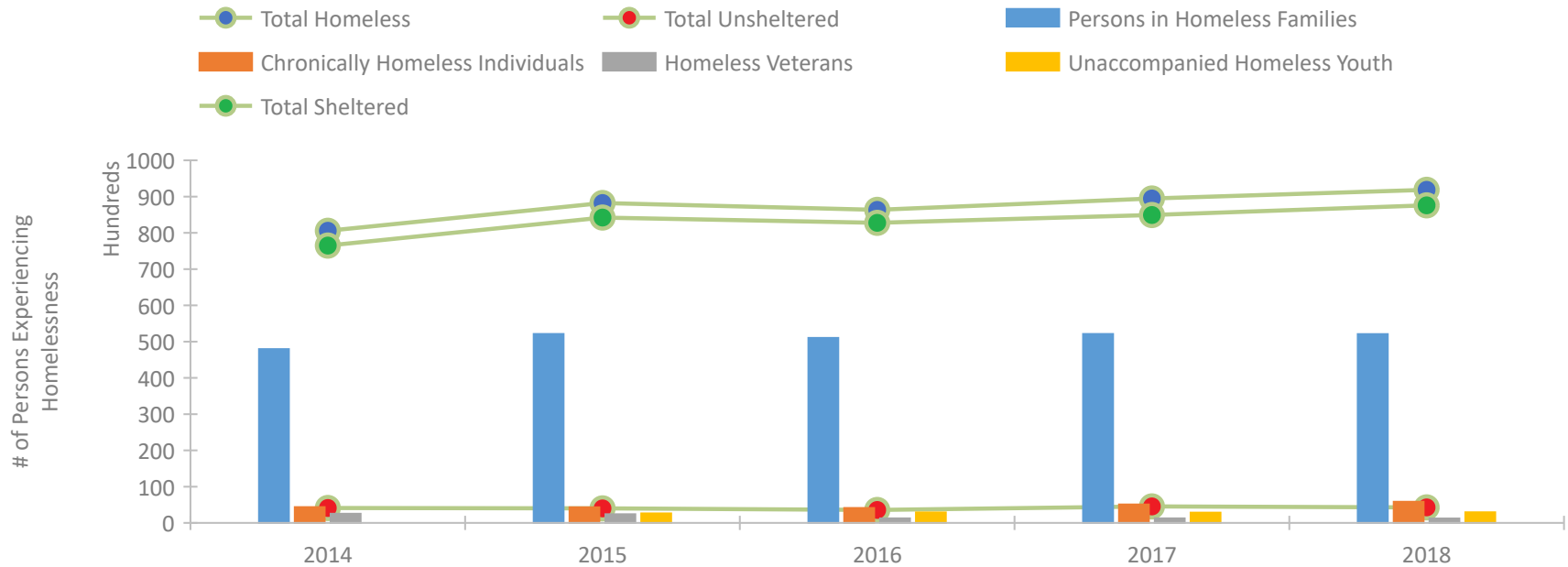


2018 CoC Boundaries 2017 CoC Boundaries

Housing Inventory Count by Program Type



Homeless Population – Point-in-Time (PIT) Count

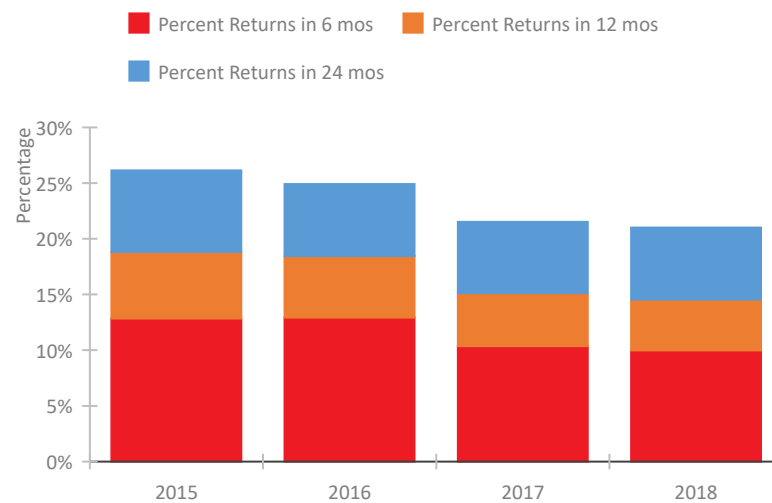


New York Continuum of Care Performance Profile

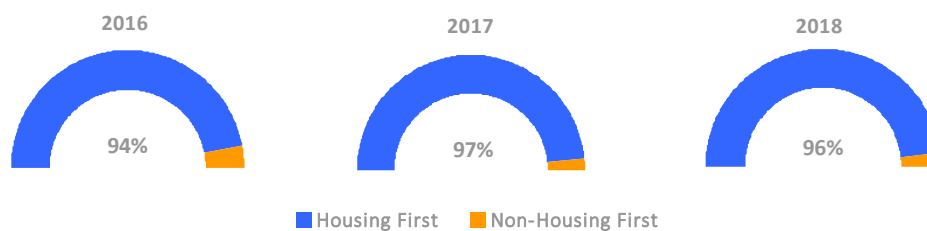
Exits to Permanent Housing by Program Type



Returns to Homelessness Over Time



Proportion of Housing First Projects by Year



Number of Projects by Year

	2016	2017	2018
Housing First Projects	558	619	543
Non-Housing First Projects	37	22	21

Data Summary: New York

Point-In-Time Count Summary

	2014	2015	2016	2017	2018	2017-18 Change	% Change
Number of Sheltered Persons in Families	47,887	52,056	50,968	52,058	52,041	-17	0%
Number of Unsheltered Persons in Families	60	59	69	55	29	-26	-47%
Number of Sheltered Individuals	28,458	32,024	31,608	32,770	35,429	2,659	8%
Number of Unsheltered Individuals	4,034	3,957	3,499	4,494	4,257	-237	-5%
Total Homeless Persons	80,439	88,096	86,144	89,377	91,756	2,379	3%
Number of Sheltered Families	14,319	15,344	15,474	16,281	16,356	75	0%
Number of Unsheltered Families	19	17	25	16	12	-4	-25%
Number of Total Families	14,338	15,361	15,499	16,297	16,368	71	0%
Sheltered Chronically Homeless Individuals	1,947	1,982	2,063	3,110	4,206	1,096	35%
Unsheltered Chronically Homeless Individuals	2,403	2,345	2,049	1,977	1,623	-354	-18%
Total Chronically Homeless Individuals	4,350	4,327	4,112	5,087	5,829	742	15%
Sheltered Veterans	2,085	2,268	1,156	1,186	1,184	-2	0%
Unsheltered Veterans	457	131	92	58	40	-18	-31%
Total Veterans	2,542	2,399	1,248	1,244	1,224	-20	-2%
Sheltered Unaccompanied Youth (up to 24)	--	2,367	2,641	2,535	2,680	145	6%
Unsheltered Unaccompanied Youth (up to 24)	--	259	248	294	261	-33	-11%
Total Unaccompanied Youth (up to 24)	--	2,626	2,889	2,829	2,941	112	4%

System Performance Measures Summary

	2014	2015	2016	2017	2018	2017-18 Change	% Change
Rate People Return to Homelessness in 6 Months	N/A	12.8%	12.9%	10.4%	10.0%	-0.4%	N/A
Number of People who are Homeless for the First Time	N/A	90,094	94,683	96,318	98,441	2,123	2.2%
Rate People Exit from ES, SH, TH, and RRH to PH	N/A	44.6%	47.2%	45.7%	47.1%	1.5%	N/A
Rate People in PSH and OPH Retain or Exit to PH	N/A	91.7%	94.7%	95.8%	96.8%	1%	N/A

Housing Inventory Count Summary

	2014	2015	2016	2017	2018	2017-18 Change	% Change
Emergency Shelter (ES)	68,152	77,017	76,479	81,468	82,292	824	1%
Safe Haven (SH)	203	216	199	92	95	3	3%
Transitional Housing (TH)	10,151	9,345	8,052	6,276	5,676	-600	-10%
Permanent Supportive Housing (PSH)	34,698	39,971	42,167	41,577	42,183	606	1%
Rapid Re-Housing (RRH)	966	3,055	2,493	5,172	4,954	-218	-4%
Other Permanent Housing (OPH)	497	602	659	517	668	151	29%

Award Summary

	2014	2015	2016	2017	2018	2017-18 Change	% Change
Continuum of Care (CoC)	\$191,794,858	\$209,108,470	\$195,920,284	\$200,807,611	\$214,906,456	\$14,098,845	7%
Emergency Solutions Grants (ESG)	\$23,928,888	\$25,823,661	\$25,805,671	\$28,561,779	\$25,708,887	(\$2,852,892)	-10%
Youth Homelessness Demonstration Program (YHDP)	N/A	N/A	--	--	\$3,592,570	--	--